

National Aeronautics and Space Administration



# ARTEMIS II

## ENGAGEMENT TOOLKIT



[www.nasa.gov](http://www.nasa.gov) | [#Artemis](https://twitter.com/Artemis)





# ARTEMIS II

## ENGAGEMENT TOOLKIT

This interactive guide is intended to serve as a resource tool for members of the community to learn how they can engage with the launch of Artemis II.

The items you will find within this toolkit are meant to help guide you in creating products, hosting events, and building anticipation for NASA's first crewed Artemis mission.

### Table of Contents

03 • ABOUT ARTEMIS II

04 • GET ENGAGED

05 • SHOW YOUR SUPPORT

06 • STEAM ENGAGEMENT

07 • RESOURCES

08 • CONTACT

# ABOUT ARTEMIS II

## NASA's First Flight With Crew Important Step on Long-term Return to the Moon, Missions to Mars.

The unique Artemis II mission profile will build upon the uncrewed Artemis I flight test by demonstrating a broad range of SLS (Space Launch System) and Orion capabilities needed on deep space missions. This mission will prove Orion's critical life support systems are ready to sustain our astronauts on longer duration missions ahead and allow the crew to practice operations essential to the success of Artemis III and beyond. Artemis II will fly during America's 250th year, marking a historic moment as the nation continues its legacy of exploration.

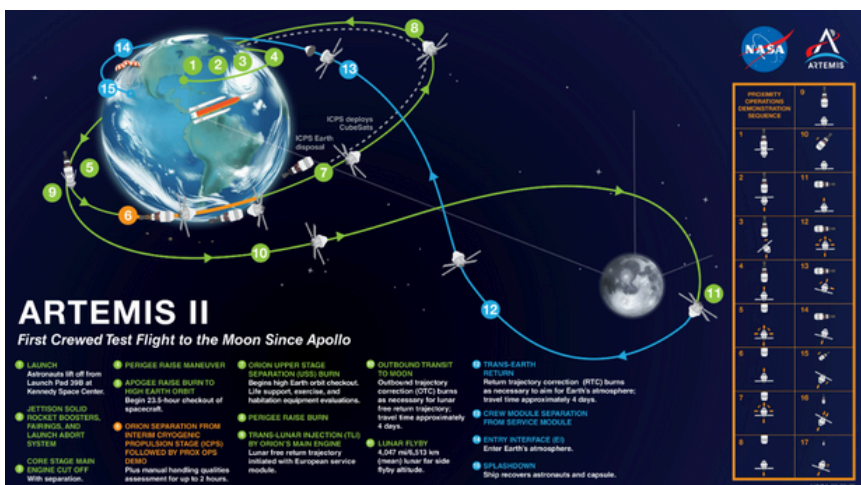


With a return trip of about four days, the mission is expected to last about 10 days. Instead of requiring propulsion on the return, this fuel-efficient trajectory harnesses the Earth-Moon gravity field, ensuring that—after its trip around the far side of the Moon—Orion will be pulled back naturally by Earth's gravity for the free return portion of the mission.

Following Artemis II, Orion and its crew will once again travel to the Moon, this time to make history when the next astronauts walk on the lunar surface during Artemis III. Through Artemis, NASA will explore more of the Moon than ever before and create an enduring presence in deep space.



The mission will launch a crew of four astronauts from NASA's Kennedy Space Center in Florida on a Block 1 configuration of the SLS rocket. Orion will perform multiple maneuvers to raise its orbit around Earth and eventually place the crew on a lunar free return trajectory in which Earth's gravity will naturally pull Orion back home after flying by the Moon. The Artemis II astronauts are NASA's Reid Wiseman, Victor Glover, and Christina Koch, and CSA (Canadian Space Agency) astronaut Jeremy Hansen.



The Artemis II crew will travel approximately 4,700 miles beyond the far side of the Moon. From this vantage point, they will be able to see the Earth and the Moon from Orion's windows, with the Moon close in the foreground and the Earth nearly a quarter-million miles in the background.



# GET ENGAGED WITH ARTEMIS II

There are infinite ways you can get engaged with NASA's Artemis II mission. The event ideas listed below are just the beginning. Get creative and share the excitement with your community!



## ARTEMIS II TRIVIA NIGHT

## ARTEMIS PARTY OR SPACE RAVE

## THEMED READ OR BOOK CLUB

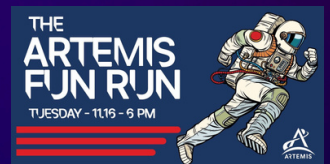
## THEMED SPEAKER NIGHT

## ARTEMIS II WATCH PARTY

Host a watch party for the Artemis II launch and splashdown! Click the image to view the full [Watch Party Guide](#).

## ARTEMIS II FUN RUN

Host an Artemis themed fun run! Runners can dress in space-inspired outfits for the special occasion.



## ARTEMIS II ART NIGHT

Show your creative side with an arts and crafts night! Try a paint-and-sip, learn to draw Artemis, enjoy coloring pages, or fold your own space-themed origami!

Click the images to the left and visit our [Resource Page](#) for coloring pages and how-to-draw guides.



# SHOW YOUR SUPPORT

Explore printable and downloadable resources to celebrate the Artemis II mission and crew. Be sure to review our [Image Usage Guidelines](#) before sharing. Other materials can be found on our [Resource Page](#).

## THEMED MENU ITEMS

Show your support through themed menu items like specialty drinks, cocktails, coffee creations, appetizers, and desserts.



## ARTEMIS II POSTERS



## ARTEMIS II BOARDING PASS

Submit your name and create a PIN to receive a digital Artemis II boarding pass. Your name will be saved on an SD card flying aboard NASA's Orion spacecraft.



## ARTEMIS II BANNERS



## ARTEMIS II TABLE TENTS



# STEAM ENGAGEMENT

Find educational resources and activity ideas that bring the Artemis mission to life through hands-on STEAM engagement.

## ARTEMIS COLLECTOR CARDS

## SOLAR SYSTEM TRADING CARDS



## BOOKS AND NOVELS

## BUILD AND LAUNCH AN SLS STRAW ROCKET

## BUILD YOUR OWN SLS



## DESIGN, BUILD, AND TEST AN ORION SPACECRAFT

## RECOVER A SPACECRAFT ACTIVITY



## CRAWLER TRANSPORTER BUILD ACTIVITY



# RESOURCES



LOGOS

GRAPHICS

IMAGERY

VIDEOS

STEAM ENGAGEMENT

DRAWING AND COLORING





# CONTACT

For any questions regarding the Engagement Toolkit, please contact Meghan Epperly (meghan.l.epperly@nasa.gov).

## NASA ARTEMIS ON SOCIAL MEDIA

Follow, share, and be a part of the mission with @NASAArtemis. Be sure to use the hashtag #Artemis!



Follow your other favorite NASA social media accounts [HERE!](#)

## KSC ON SOCIAL MEDIA

Stay connected with your local NASA center by following @NASAKennedy for launch updates and space exploration news.



Follow your other favorite NASA social media accounts [HERE!](#)

