

Vol. XVIII

Cleveland, Ohio, January 22, 1960

No. 2

## PLUM BROOK TODAY

Keeping pace with the fast-moving developments at Plum Brook, ORBIT presents the latest views. The photos you see in this edition show significant changes which have taken place at both the reactor and rocket test areas since our last reporting.

At this date radioactive fuel elements are expected to arrive in the near future. This means that the reactor's "critical" status is drawing closer.

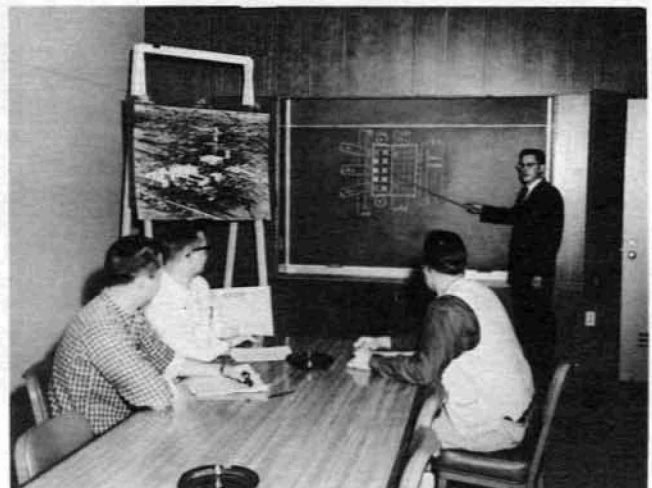
Entrance to the fenced-in Nuclear Reactor area will be through the Security Control building. Starr Truscott, Administrative Officer is seen entering the nearly completed building.



The Lobby of the Nuclear Reactor building will receive visitors at this reception desk. Posing for Orbit camera are secretaries Mrs. Arlene Ann Case (left) and Miss Ruth Ann Oetzel.



In one of the Conference Rooms in the Nuclear Reactor building, Dr. Theodore Hallman, Chief of Reactor Research discusses the blackboard diagram of the reactor core with (l to r) engineers William Poley, Harold Giesler and Thomas Tambling.

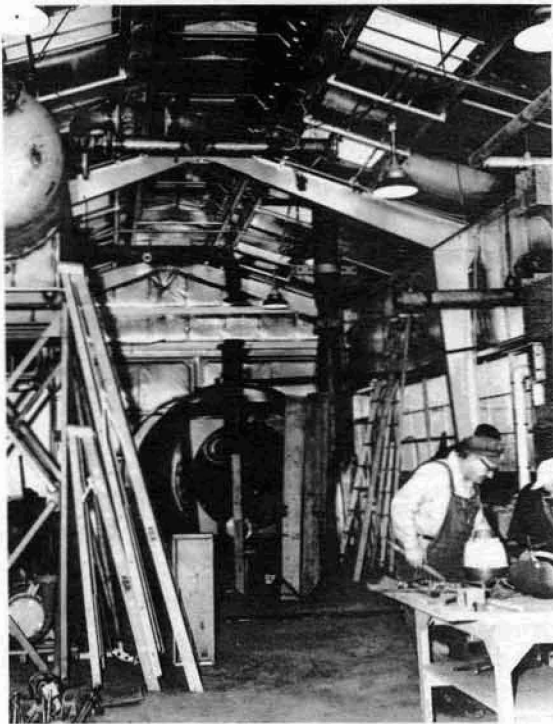
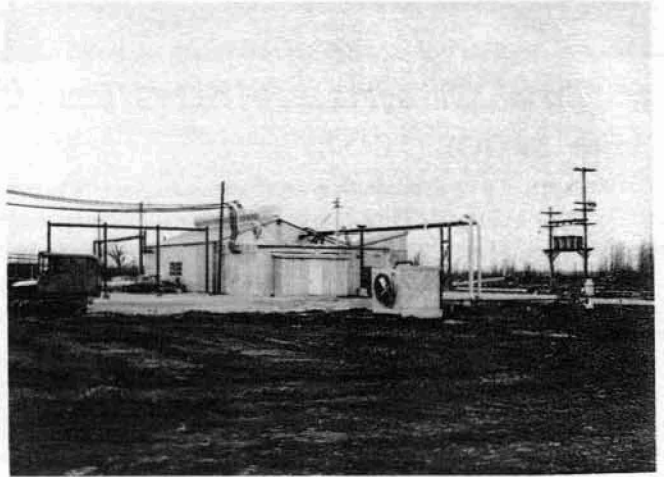


(Continued on page 2)

ORBIT, an official publication of the Lewis Research Center, National Aeronautics and Space Administration, Cleveland 35, Ohio is published bi-weekly in the interest of Lewis employees. Send contributions to the Editor, Room 5, Administration Building.  
 Editor . . . . . Marjorie A. Hyre      Deadline: Friday after pay day.      Reporters . . . . . NASA Employees

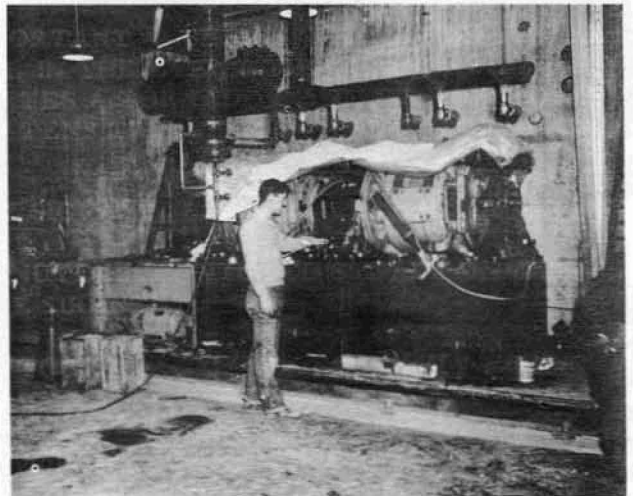
## PLUM BROOK TODAY (Continued from page 1)

Exterior view of "I" Site Pump Rig showing the start of cryogenic piping installation. The concrete wall area contains a carbon reactor in which boiled off gases are captured and decontaminated before exhausting into the air.



Interior of "I" site Pump Rig showing the external containment vessel in the center of the photo. This 134-ton tank was formerly used by Erie Ordnance for ammonia storage. A 9500 pound stainless steel internal tank is used as the pump capsule. The entire rig is mounted on tracks so it may be moved outside for easier pump installation.

A permanent fixture in the "D" Site Turbine Rig are these dynamics. Mounted on bed plate, they act as electrical brakes in the overall job of checking the thrust developed by the turbines. Formerly used in Engine Research Building at Lewis, the dynamics were overhauled and taken to Plum Brook. Ted A. Klonk is seen standing by the dynamics.



(Continued on page 6)

## PATRICK TELLS OF AFRICAN SAFARI



Donald W. Patrick, Commissioner of Airports for the city of Cleveland will tell of his African Safari adventures at 8:00 p.m., Tuesday, February 2, 1960 in the Auditorium.

In a special presentation by the Llama Club, Mr. Patrick will use color slides and movies as he narrates exciting ventures into deepest Africa. Climaxing twenty years of hunting in Canadian and U.S. areas, Mr. Patrick sought the greatest of beasts in the wildest of the world's hunting grounds.

For your ticket to an African Safari, see Mrs. Gosney, Ad. Bldg. Lobby; Exchange Store; John Everett, Utilities; Howard Douglass, ROB; Ray Madigan, Ad. Bldg. Admission is free.

### CAFETERIA MENU

Monday Jan. 25	Chicken noodle soup Smoked sausage & hominy Hot roast beef sandwich	.10 .50 .50
Tuesday Jan. 26	Mongole soup Chicken cacciatore Roast pork & dressing	.10 .55 .55
Wednesday Jan. 27	Plantation soup Knockwurst & hot potatoe salad Macaroni and cheese	.10 .45 .35
Thursday Jan. 28	Congressional bean soup Old fashioned beef stew Creamed chipped beef on toast	.10 .50 .45
Friday Jan. 29	Cream of tomato soup Salmon croquettes Cubed steak	.10 .45 .55

Monday Feb. 1	Chicken barley soup Fried chicken leg Tenderloin tips on noodles-casserole	.10 .50 .55
Tuesday Feb. 2	Beef tomato rice soup Ham & potatoes - au gratin Sauerbraten	.10 .45 .55
Wednesday Feb. 3	Split green pea soup Smoked sausage & baked beans Baked chicken & noodles casserole	.10 .50 .50
Thursday Feb. 4	Congressional bean soup Macaroni and cheese Veal scallopini on spaghetti	.10 .35 .55
Friday Feb. 5	Cream of celery soup Fillet of perch Roast beef	.10 .50 .55

## well-spent buck

These Plum Brook men are not violating the new Lewis Procedure Manual addition (Section 275.92) which prohibits hunting on Federal Reservation. They are just sawing apart the antlers of two young deer who got hopelessly tangled last week. Seeing the bucks wearily trying to break loose, a group of Plum Brook men subdued them, tied their feet, then sawed off the emmeshed antlers. Delmes Tackett, Plant Protection man saws as Clifford Clagg, Building Maintenance Mechanic assists.

