



Structured Solutions_{INC}

Understanding “Driving Slack” and its Uses

Kenny Arnold

Structured Solutions Incorporated



About Me

- Arizona Native
- Graduate of Arizona State University
- Started career doing scheduling work for Orbital Sciences, which was acquired by Northrop Grumman
- Currently serves as the Chief Technology Officer of Structured Solutions Incorporated



Learning Objectives



Understand the concept of “Driving Slack” and how it’s different than Total Slack and Free Slack



Understand how Driving Slack can be used to calculate a Driving Path



Understand how SSI’s Dependency Analysis Tools Use Driving Slack to help analyze dependencies



What is Driving Slack?

Driving Slack is the amount of ***Schedule Flexibility*** a task has before it begins to drive a ***Focus Point***.

Driving Slack is ONLY
calculated to a specific
focus point.

Driving Slack \neq Total Slack

Driving Slack \neq Free Slack

How is that different than Total Slack or Free Slack?

Total Slack is the amount of schedule flexibility any given task has to any tasks within its work stream that have a ***deadline*** set or the end of the schedule.

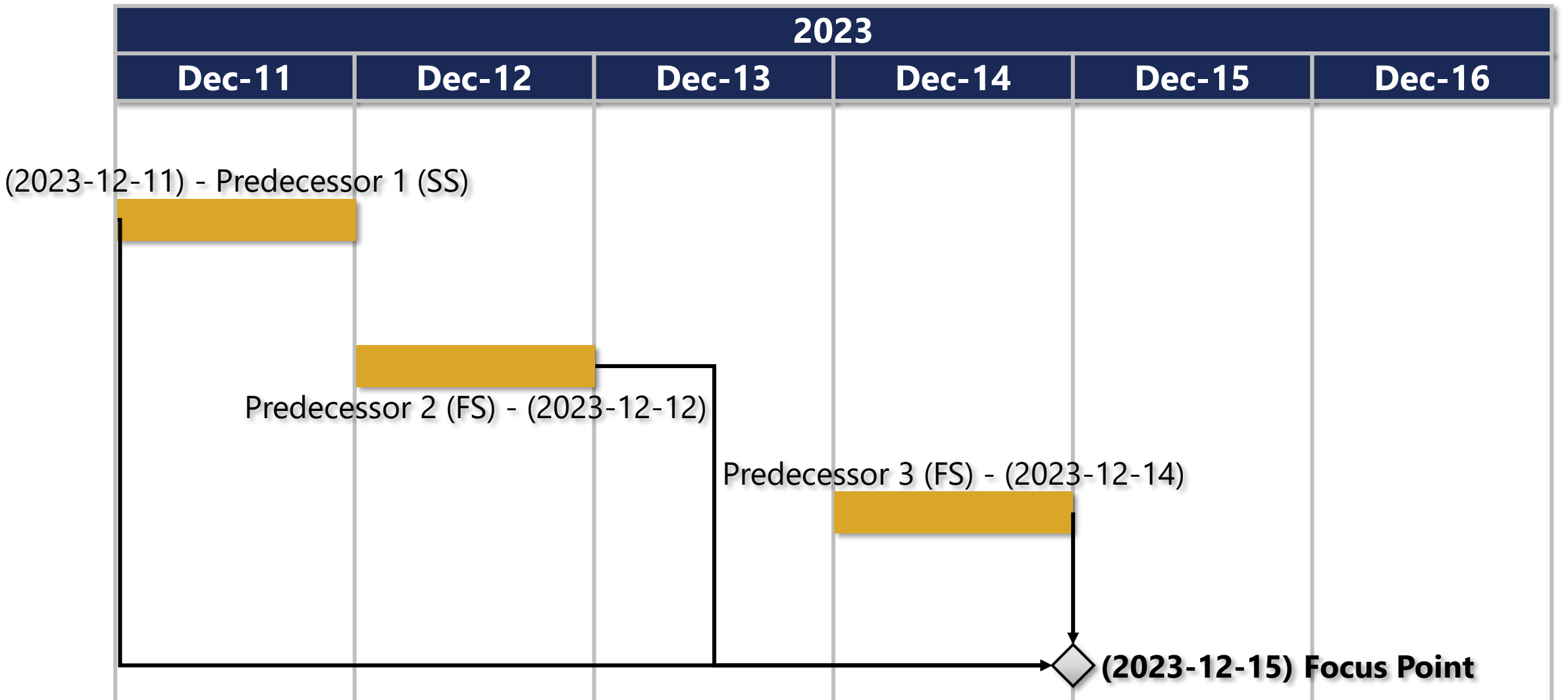
Free Slack is the amount of schedule flexibility any given task has to its ***nearest successor***.

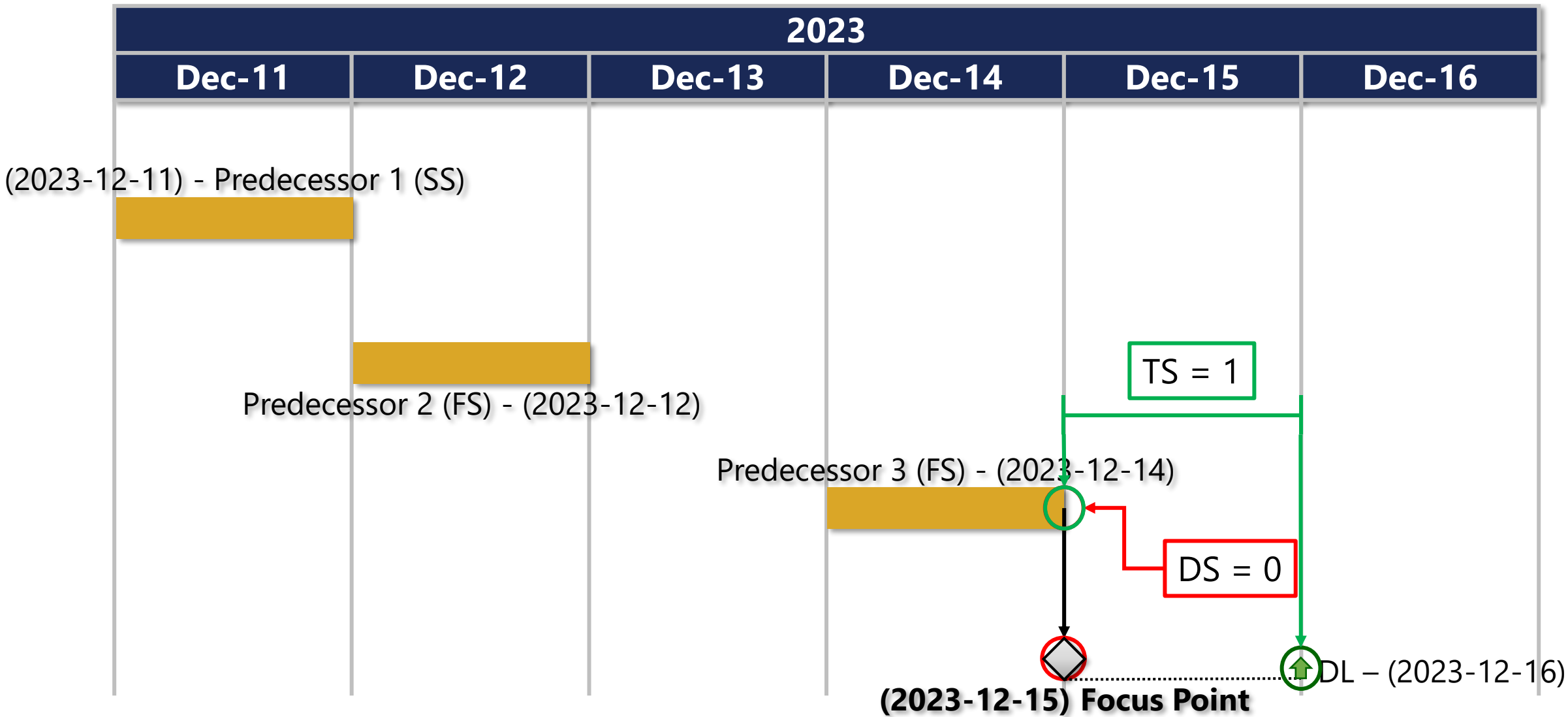
Calculating a Critical or Driving Path using ***Total Slack*** or ***Free Slack*** can be ***unreliable*** because neither values are calculated to a specific focus point.

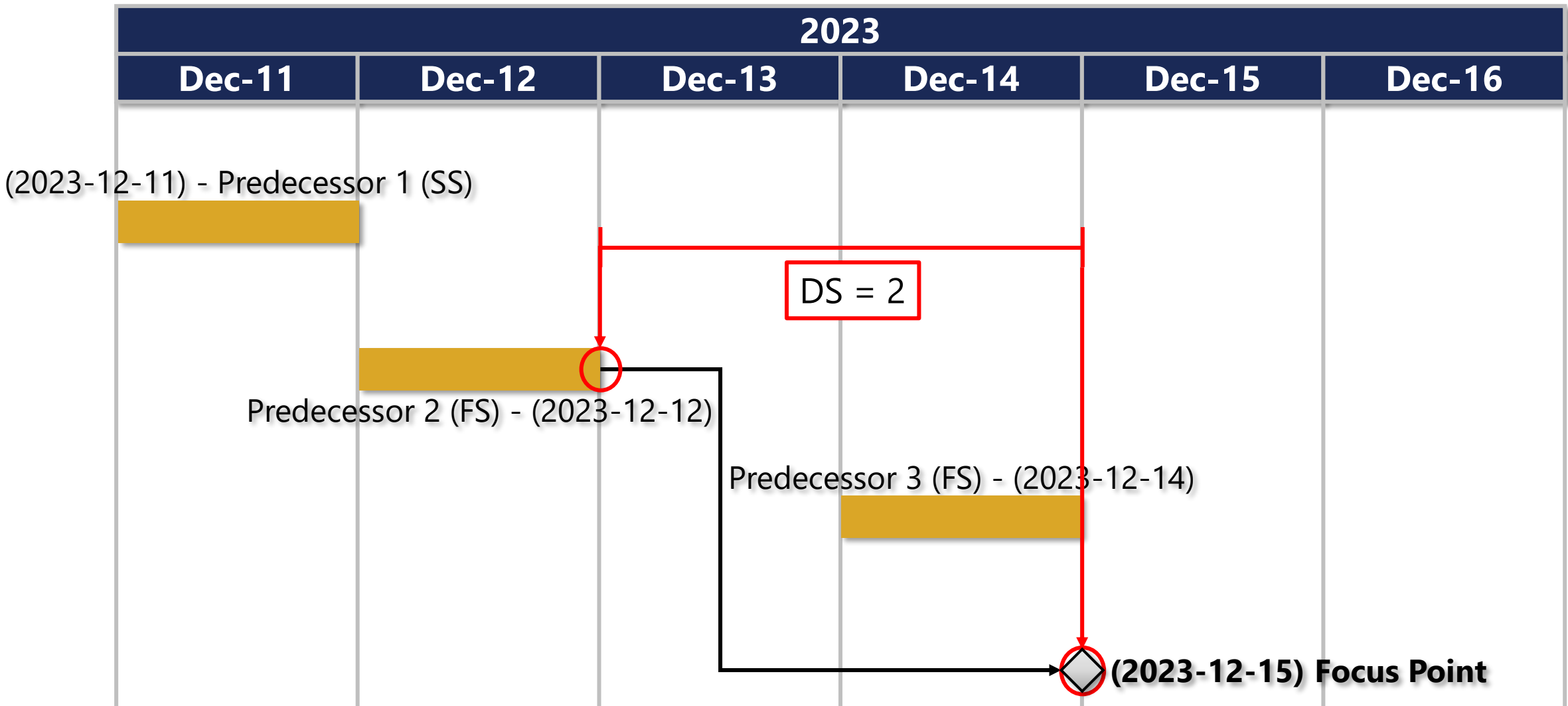
Using ***Driving Slack*** is the ***MOST ACCURATE*** way to calculate the project's Critical Path or any Driving Paths.

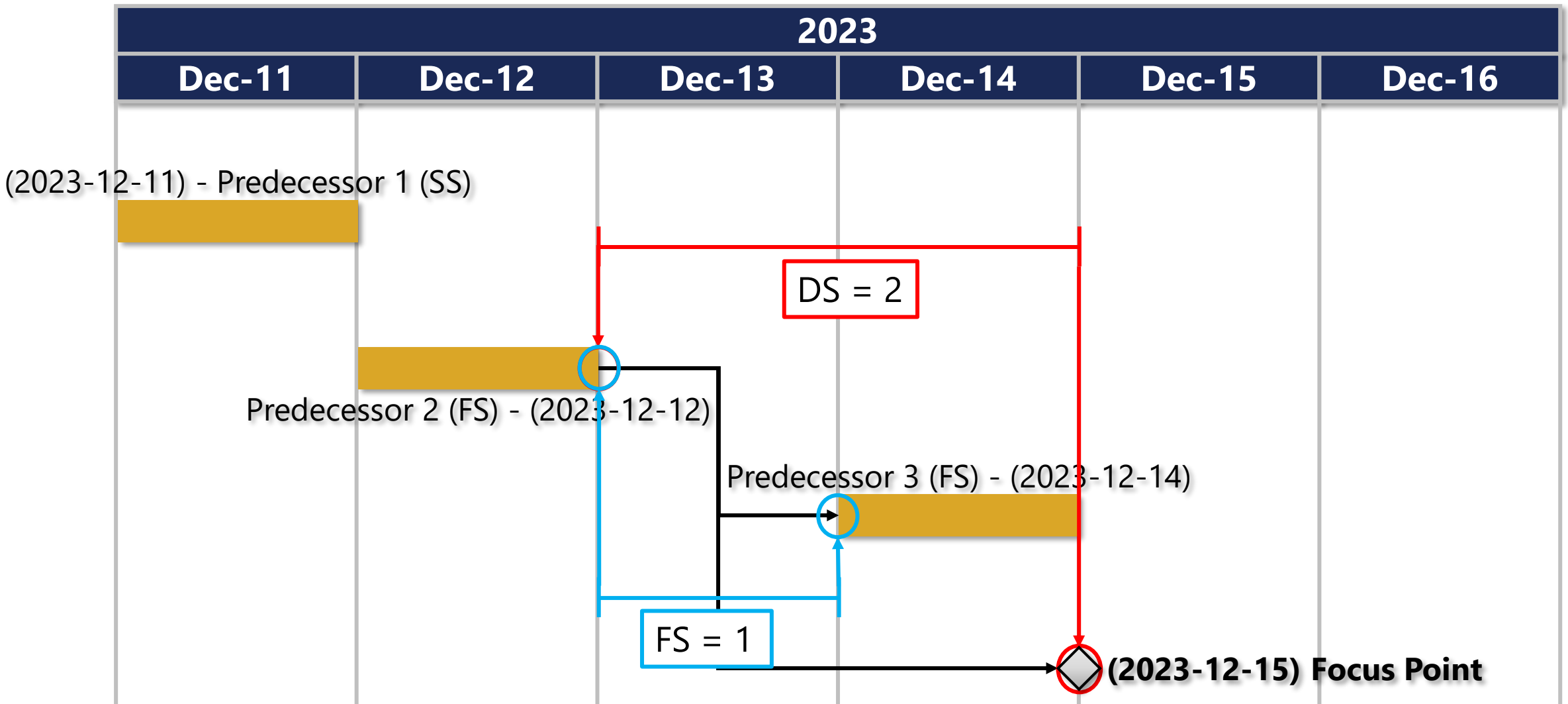
How is Driving Slack Calculated?

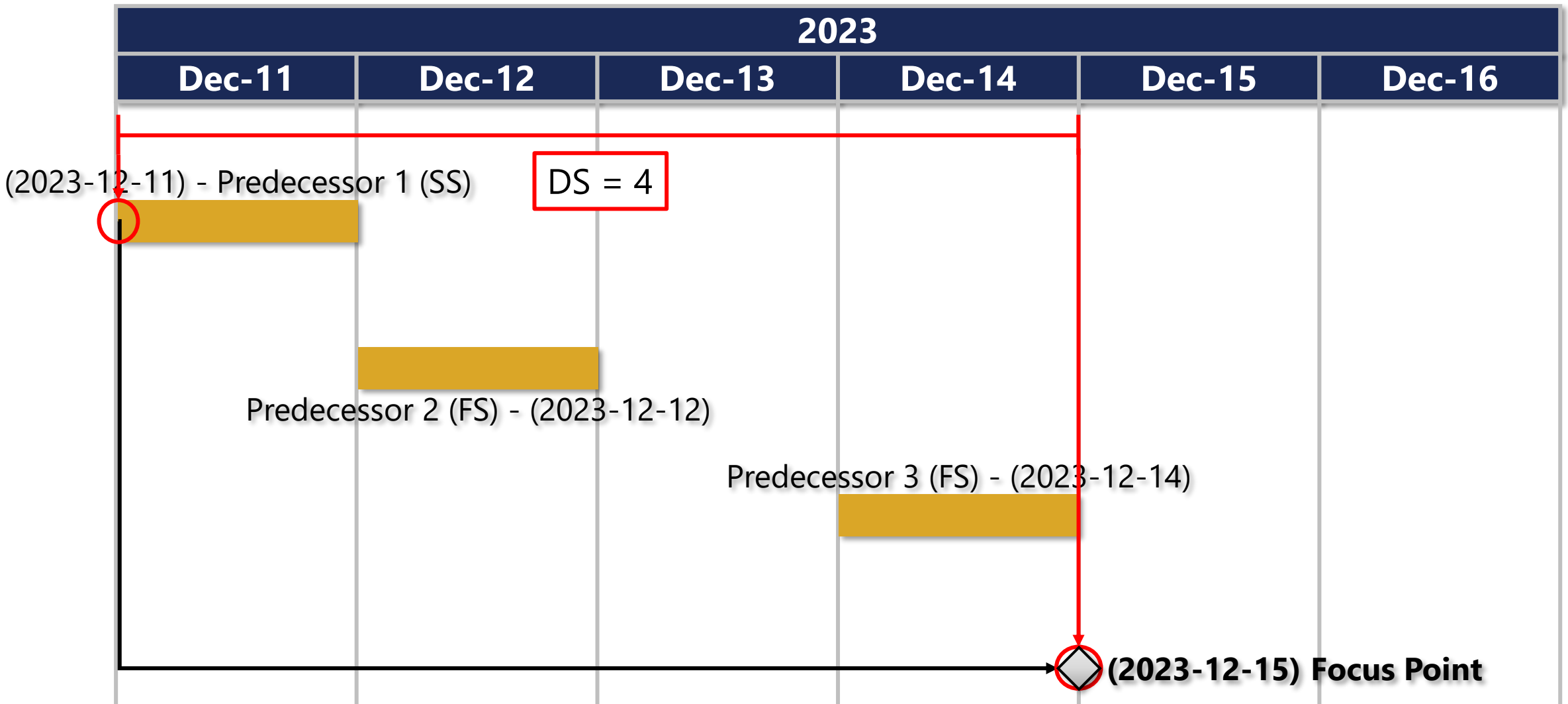
[illegible]

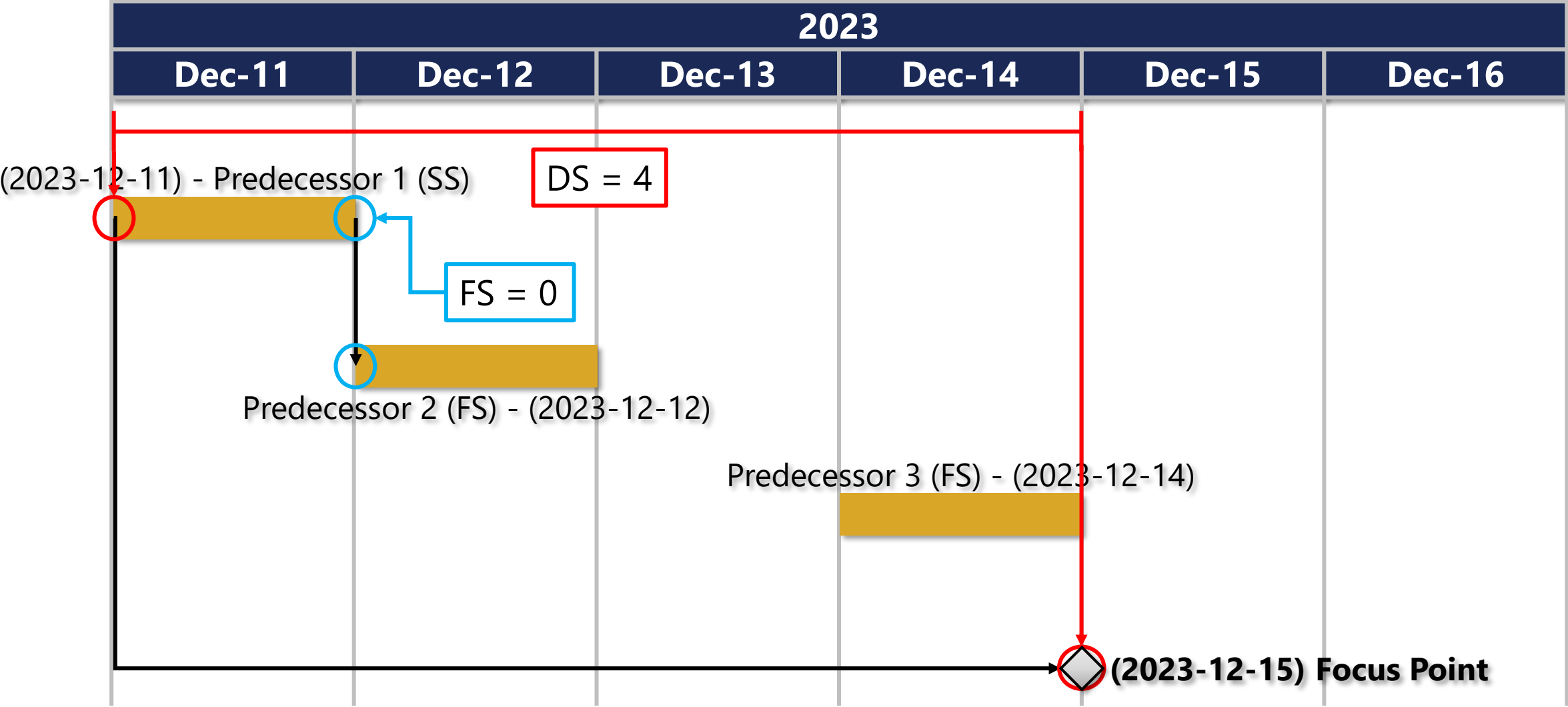


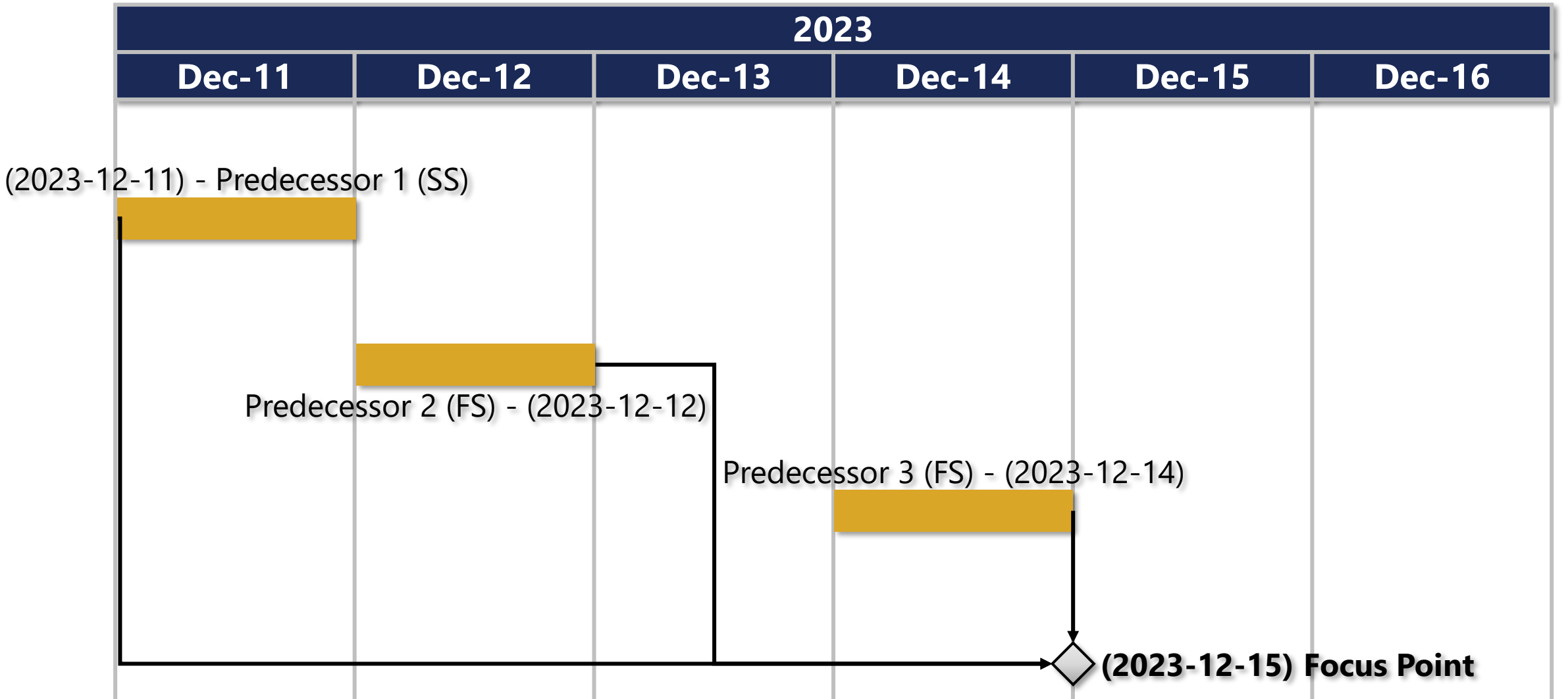


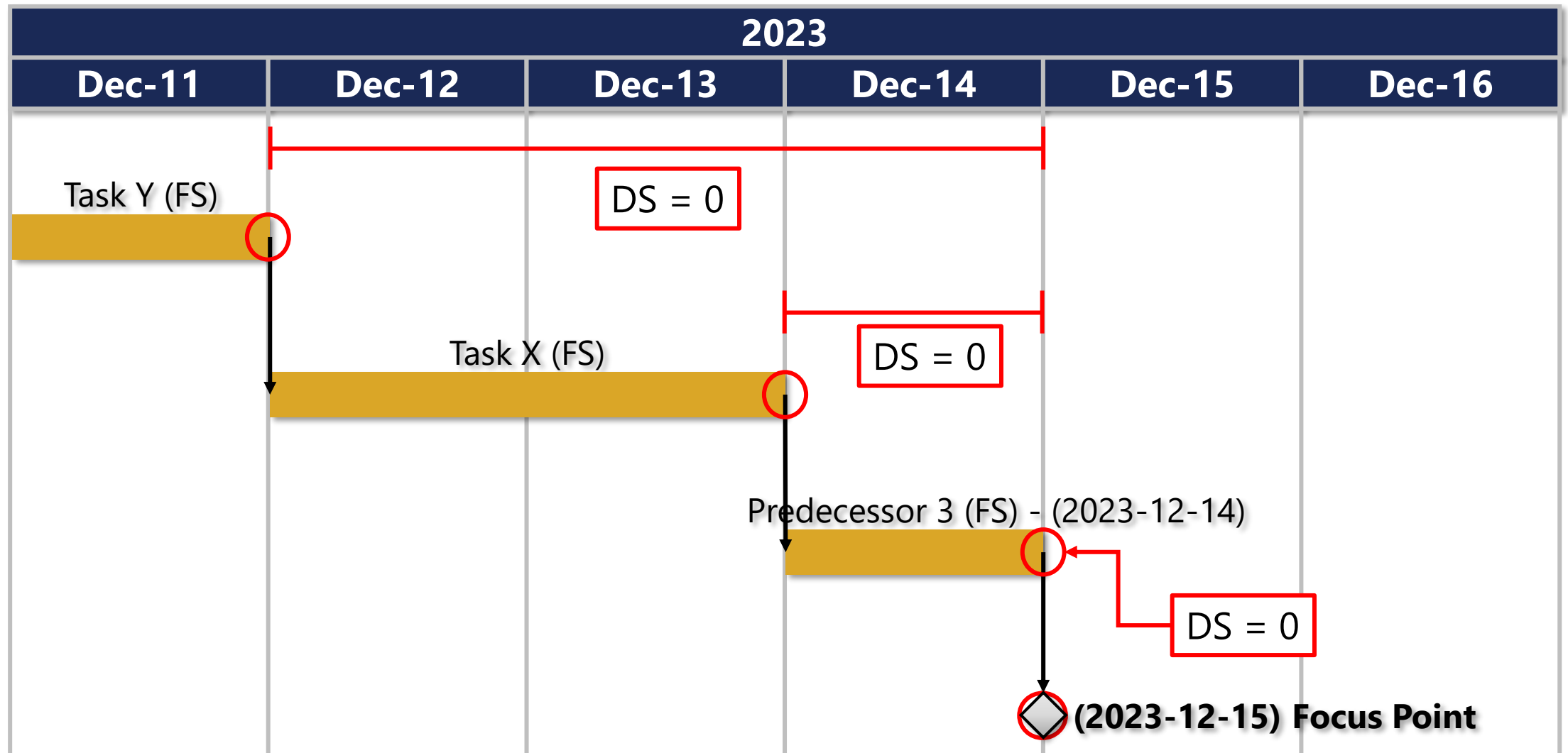












SSI Trace Tools Live Example

Questions?

Thank you.



Kenny Arnold
480-234-9029
kenny.arnold@ssitools.com

