



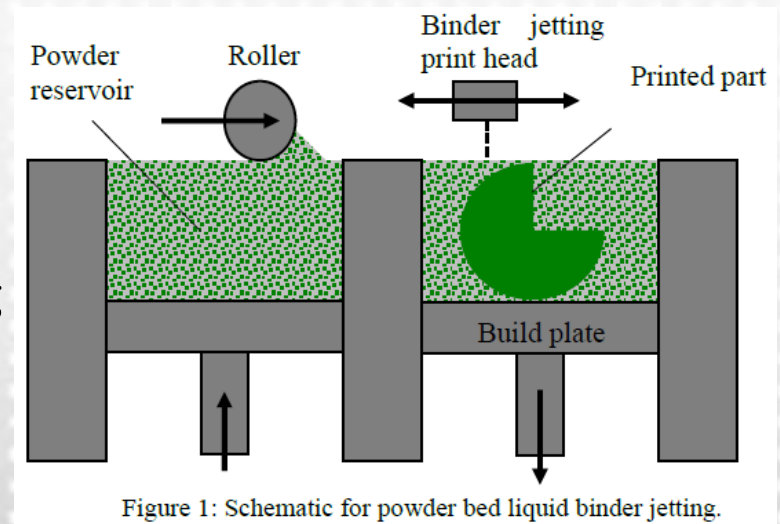
Join the OptiPro Revolution.

Additive Manufacturing of SiC Freeform Optical Elements

Scott DeFisher
OptiPro Systems
10-31-18

Background

- Contract activated 7/27/2018
- UNC Charlotte (UNCC) chosen as subcontractor for their expertise in chemistry, materials science and current work developing additive techniques for ceramic materials.
- UNCC is experimenting with a powder bed additive manufacturing of silicon carbide (SiC), using a liquid sodium hydroxide (NaOH)-water solution as a binding agent. Which also promotes secondary crystal growth during sintering to reduce porosity and increase strength
- OptiPro has received molded samples which we processed with similar techniques as we would standard SiC.
- These samples were hand molded in a way to attempt to mimic the 3D printing process.



Initial work



Join the OptiPro Revolution.

- After initial molded samples sent to OptiPro, UNCC has been experimenting with different mixtures of SiC powder particle sizes, pressures of compacting the powder, binder solutions and sintering profiles. To develop the best recipe for a 'SiC-Like' material.
- The powder and the binder have proven harsh on the standard commercial print head and roller.
- Optipro procured ZCorp powder bed printer, similar model to which UNCC has. Allowing us to mimic work done by UNCC while using our expertise in machine design to develop and integrate more robust components to allow full function of the machine using SiC powder and NaOH solution binders.
- UNCC did some preliminary math on speeds and flowrates for applying binder.

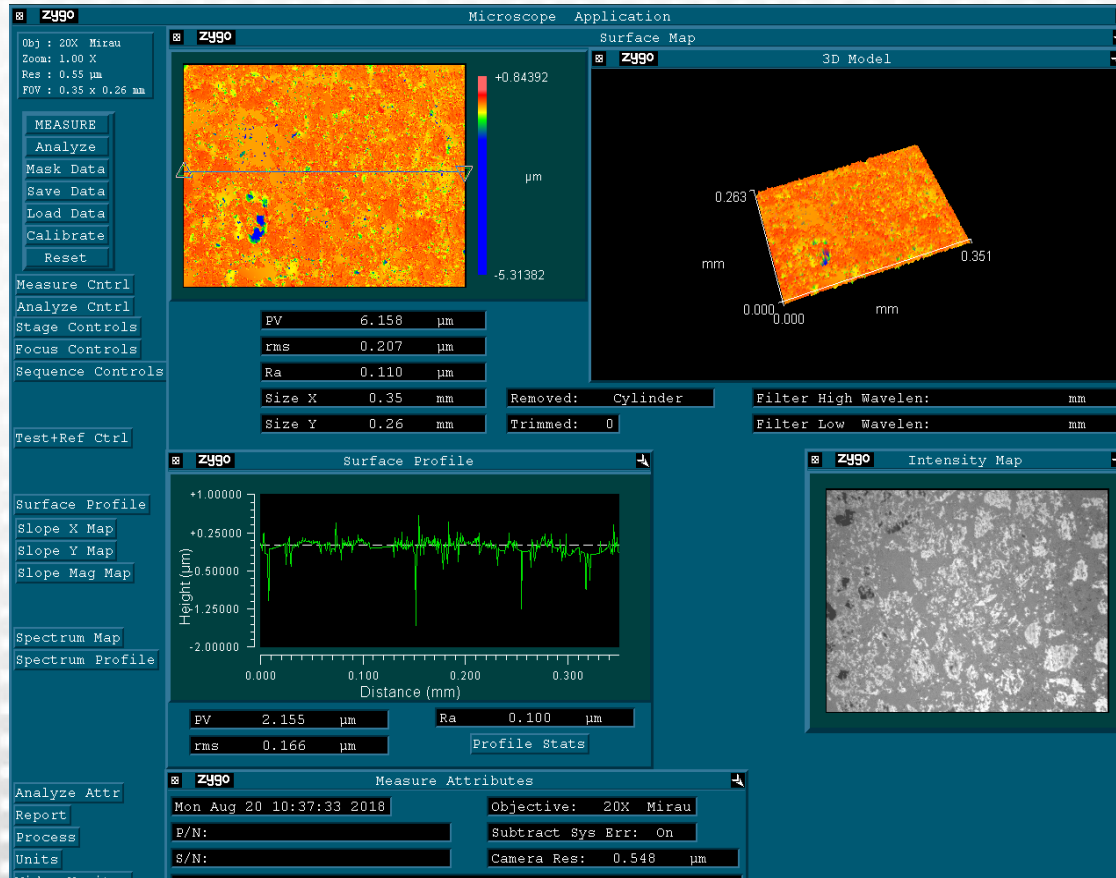


Initial Work



Join the OptiPro Revolution.

- OptiPro received 3 samples from the original molded test parts.
- On each one we ground a few millimeters of stock off the top and bottom to get thru the 'skin' to a more homogenous layer.
- We experimented with both Optisonic and traditional CNC grinding. We did not iterate or experiment to improve surface yet.
- Right is a screen shot from our Zygo NewView of the Optisonic ground surface



Planned work

- UNC Charlotte is continuing to work with different recipes and processes to make more sample parts.
 - Investigating a method of using a more standard binder in the print head to print a 'green state' part and applying the NaOH afterwards. If feasible would it would bring us to printing test parts quicker.
- OptiPro is refurbishing the Zcorp powder bed printer acquired to retrofit it to be able to print with the powders and binders prescribed by UNCC
 - Investigate micro jets, sprayers and droppers to create a print head that can deliver the NaOH binder and plan to integrate it on our printer.
 - Investigate improvements to the roller, to be able to handle and deliver consistent layers of SiC powder.
- Once we are able to manufacture test samples we will start further evaluation of strength and material properties, including sending them out for CTE evaluation.
- Once OptiPro is able to start processing samples we can work with both the initial recipe and grinding/polishing processes to attempt to create an optical surface on a grown part.



Join the OptiPro Revolution.

Effect of processing parameters on microstructure density, and mechanical properties.

Presented by
Ahmed El-Ghannam, PhD

Amazon crystals are initiated at the silica gel layer

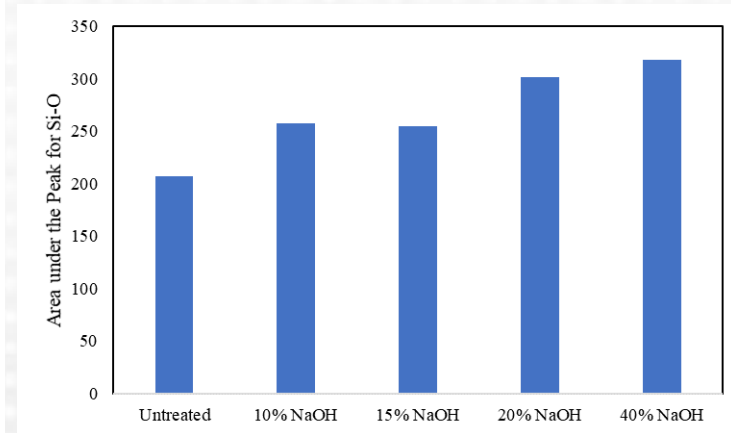
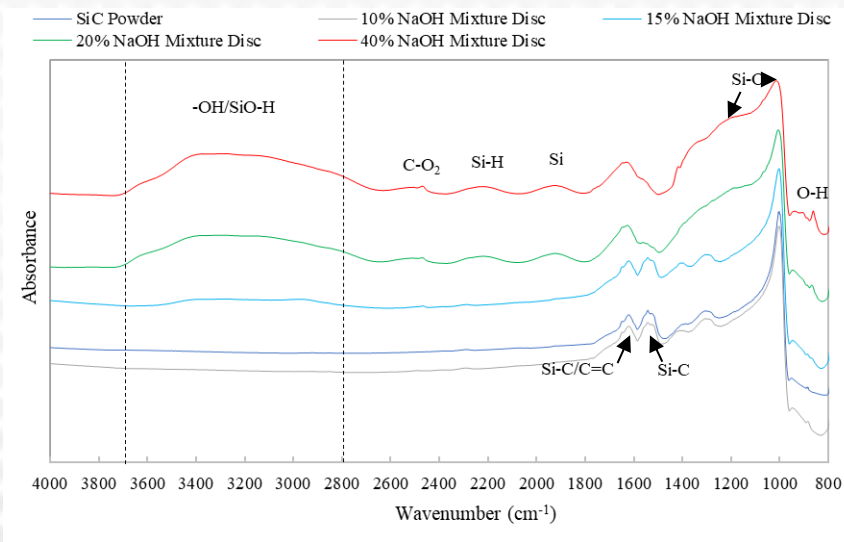


- A (1-40 μ m) SiC powder was mixed with 6.25 wt% (< 80 nm) nano powder.
- The surface of the SiC particles was chemically treated with 500 μ L of 5 wt% NaOH and shaped manually into discs (10 mm dia and 25mm height)
- The SiC discs were heated (1 C/min) in air at 900C for 2 hrs

Effect of NaOH Concentration on the surface chemistry



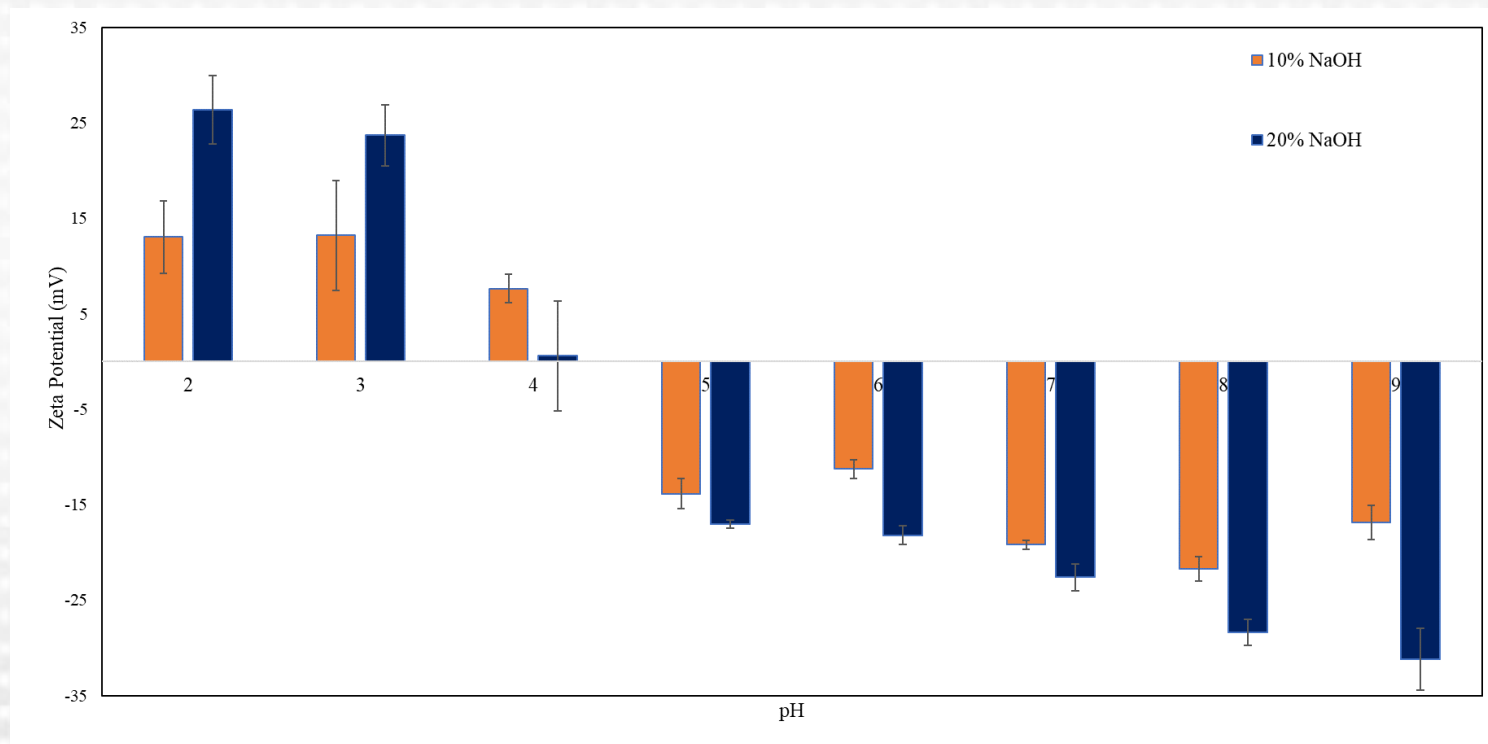
Join the OptiPro Revolution.



Effect of NaOH concentration on the Surface Charge



Join the OptiPro Revolution.

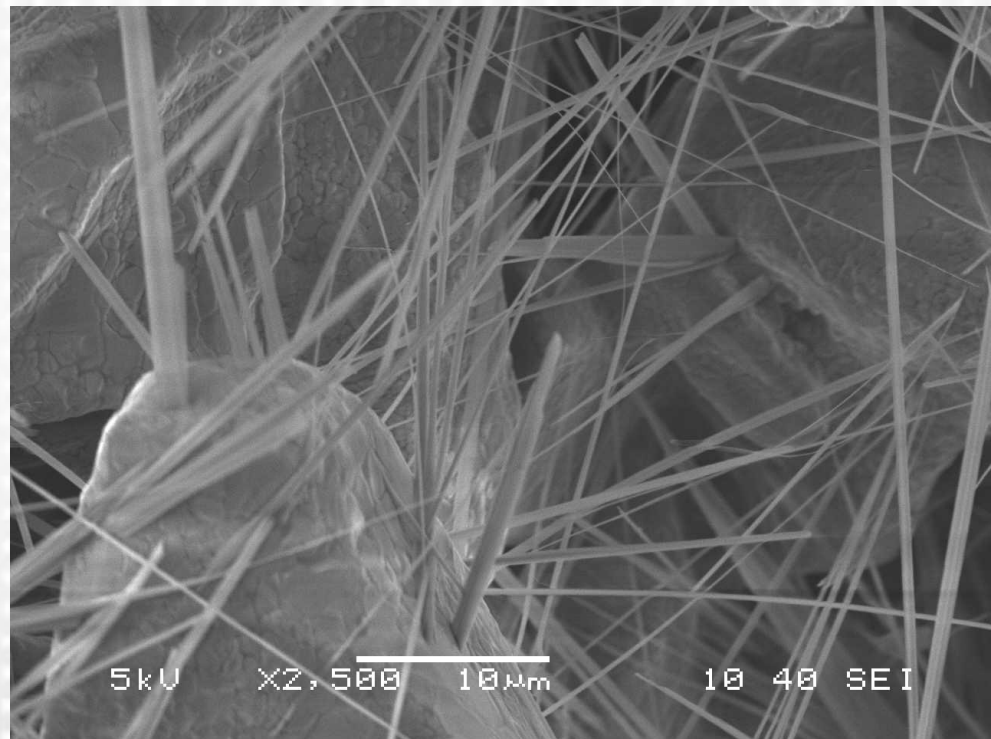


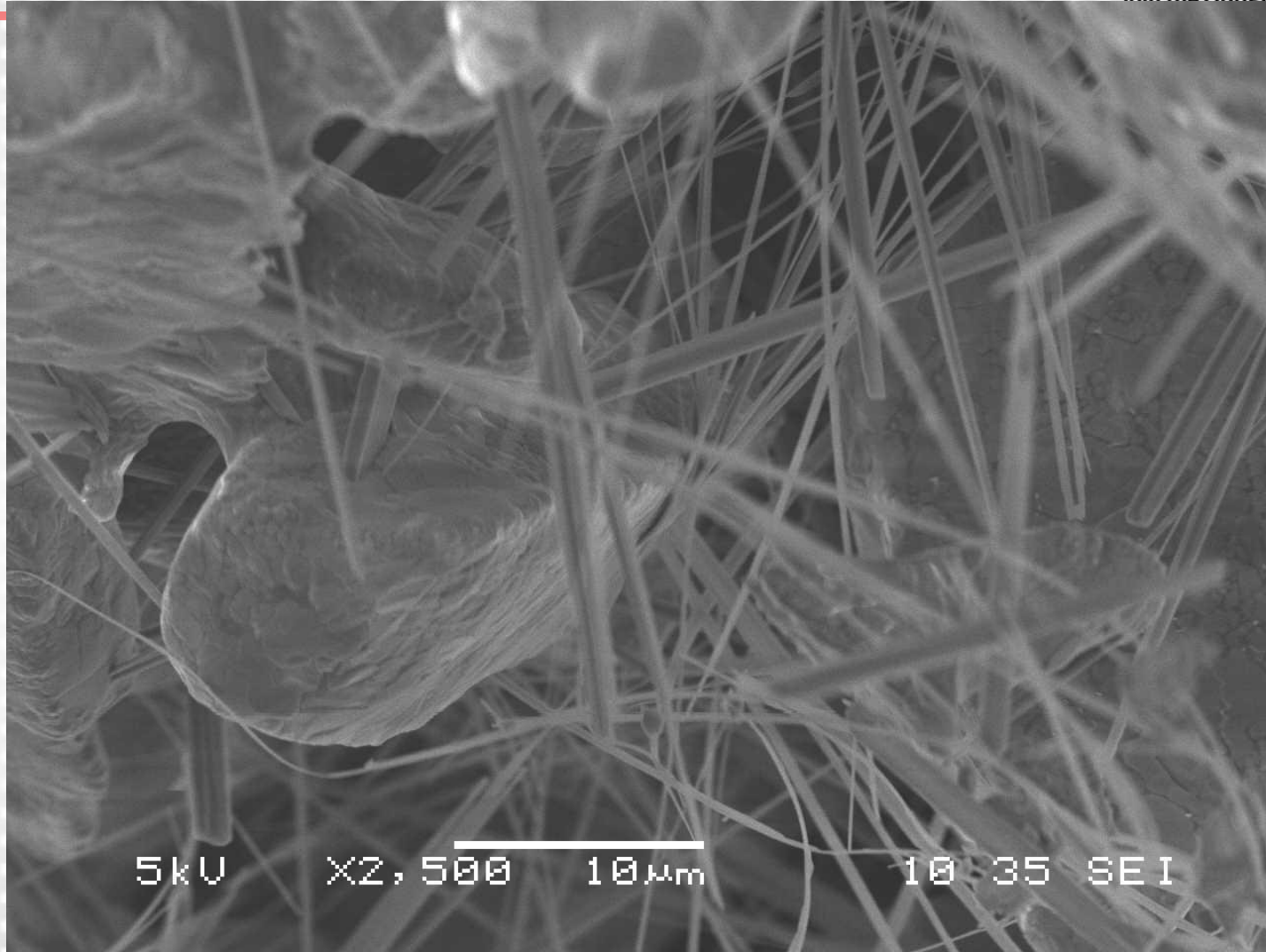
Amazon Crystals



Join the OptiPro Revolution.

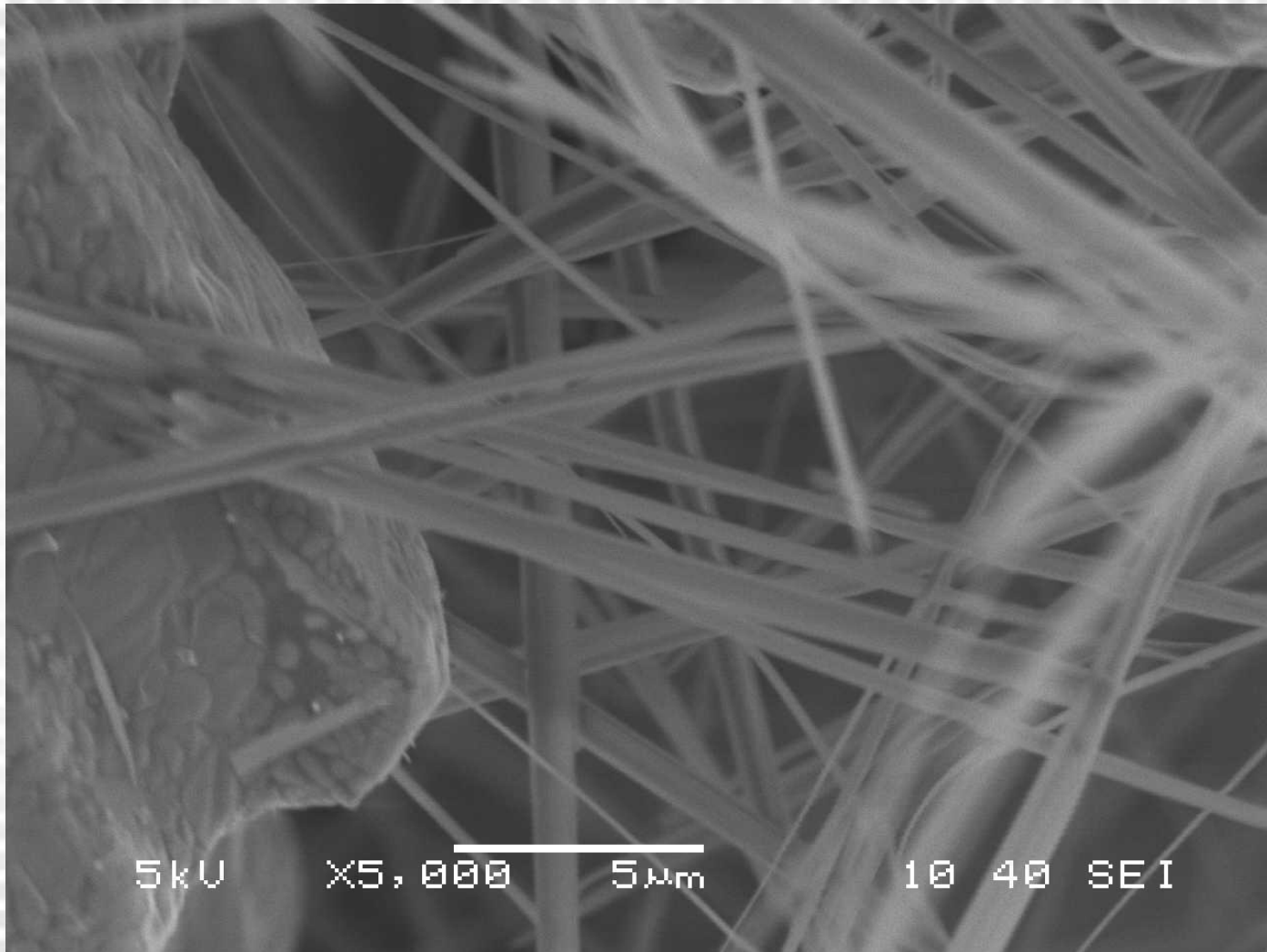
- During heat treatment, a secondary crystal growth occurs bridging the gaps between SiC particles







Join the OptiPro Revolution.

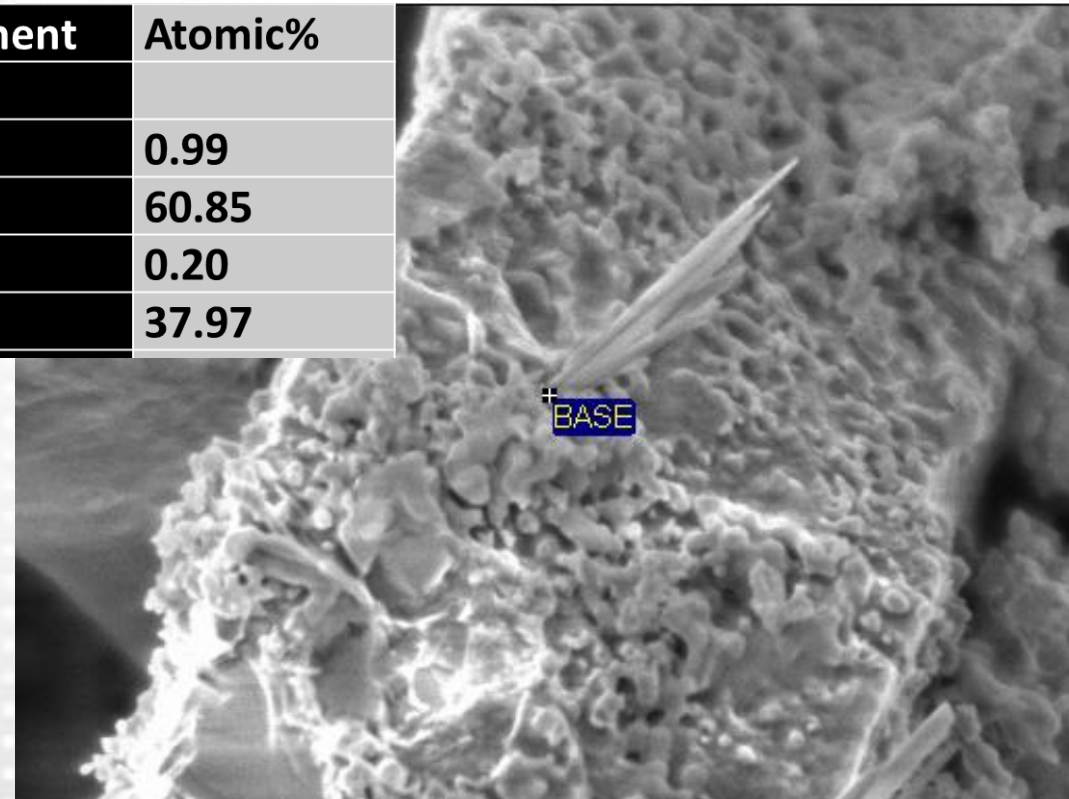


Amazon crystal growth on the surface of SiC

5% NaOH - 900/2hrs – EDX analysis of the base

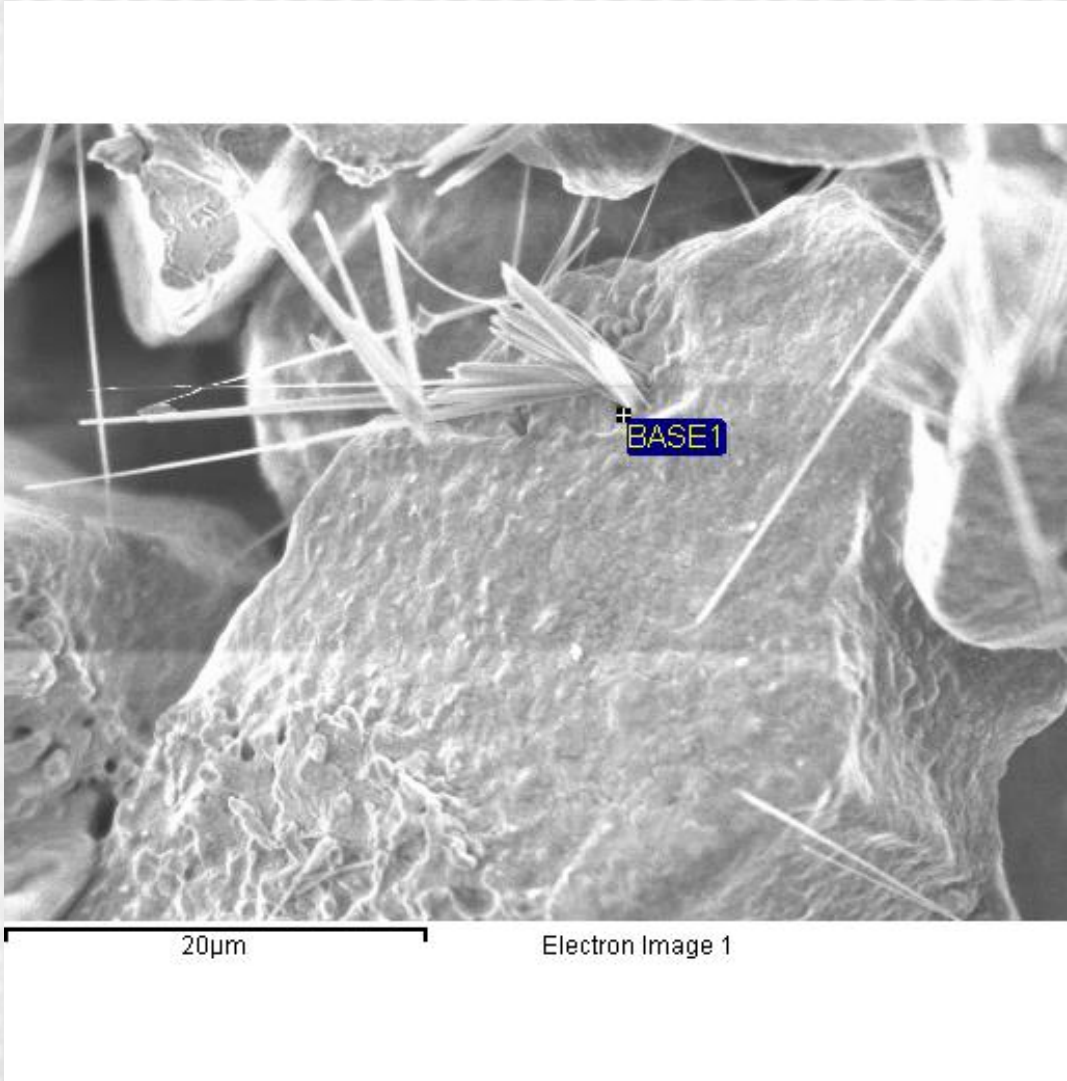
Element	Atomic%
C	0.99
O	60.85
Na	0.20
Si	37.97

- These amazon crystals originate from the gel layer rather than from the silicon carbide particle itself



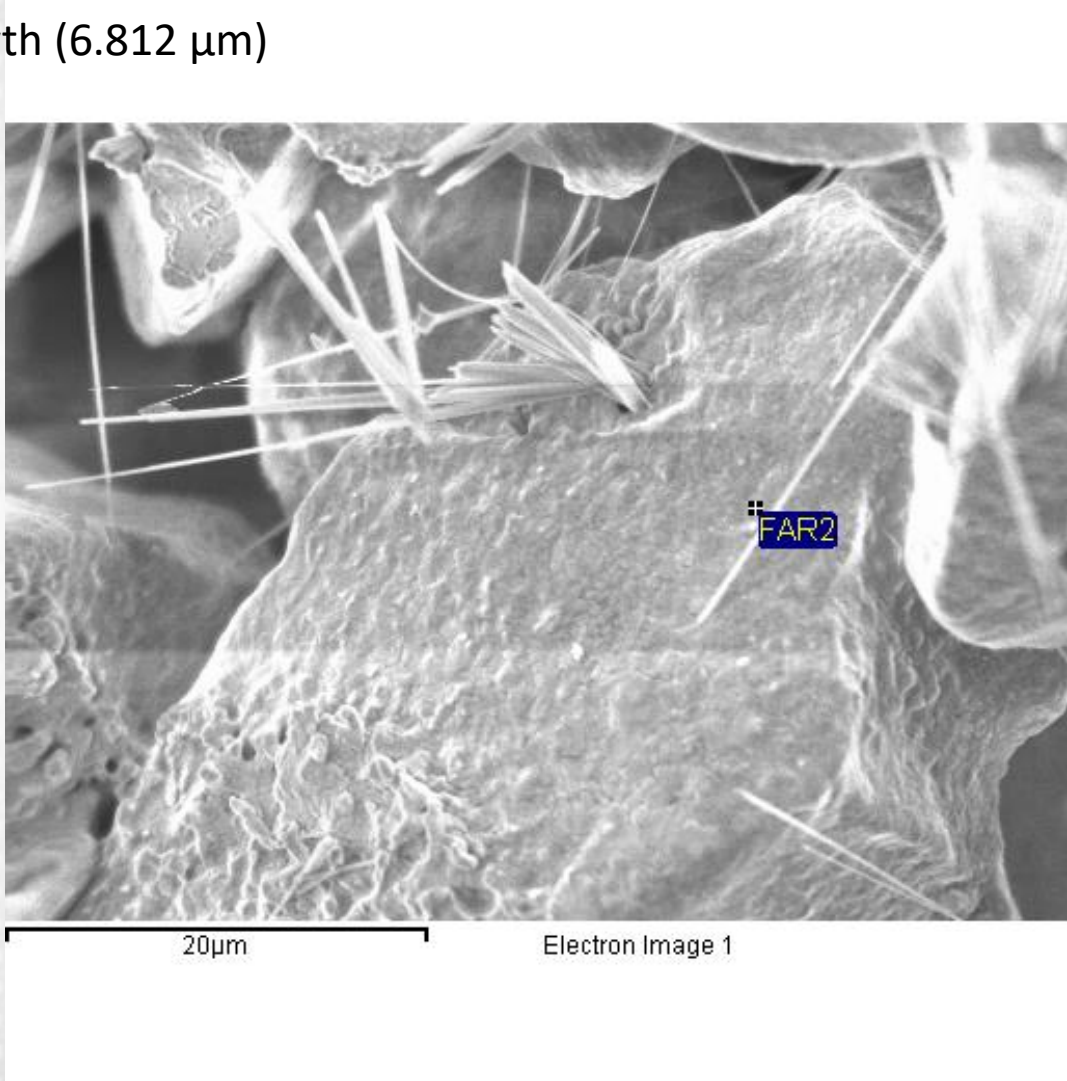
5% NaOH 900/2H - Base of crystal

Element	Atomic%
C	5.13
O	58.55
Na	0.77
Si	35.54



5% NaOH 900/2H - Away from crystal growth (6.812 μm)

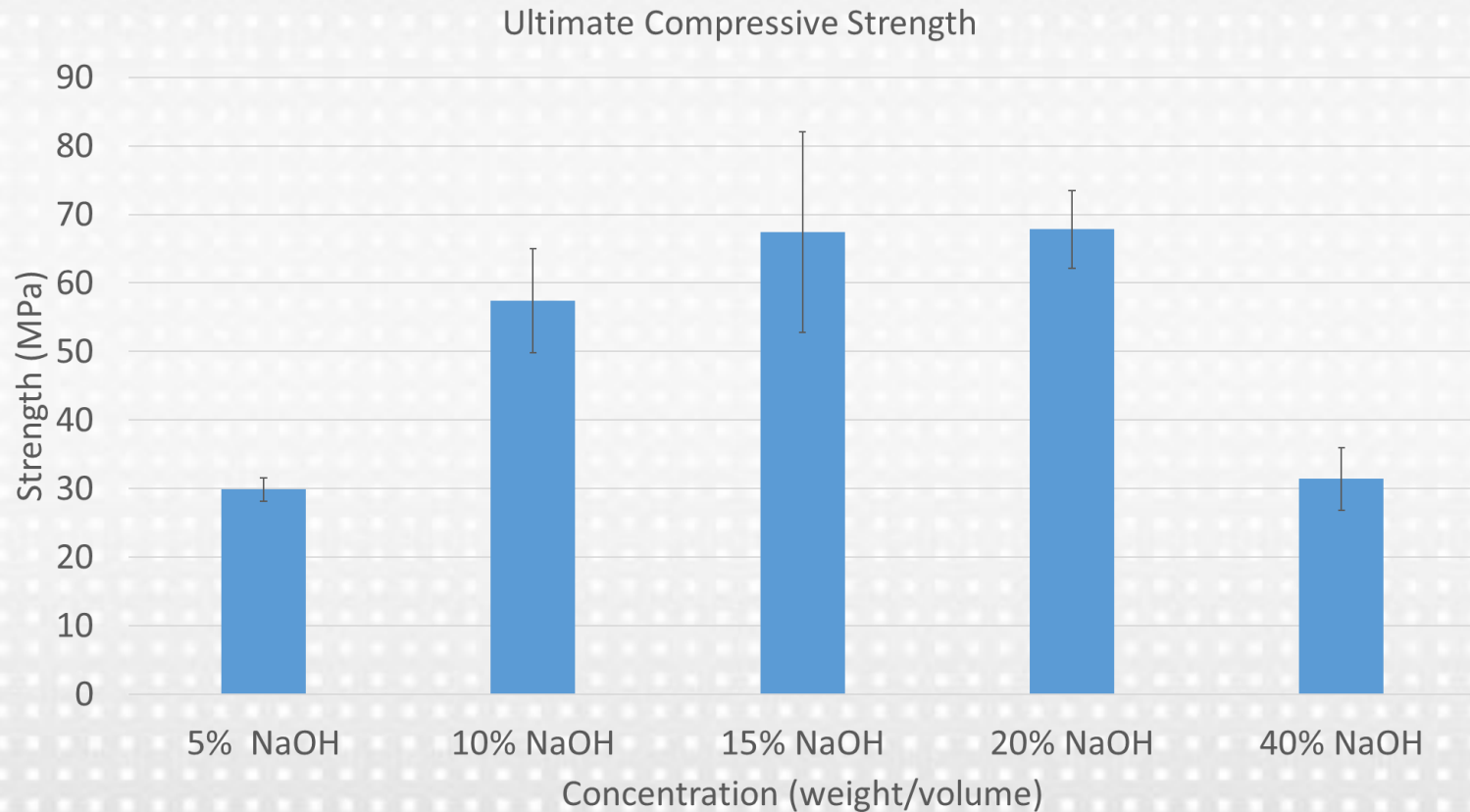
Element	Atomic%
C	6.60
O	59.11
Na	0.50
Si	33.78



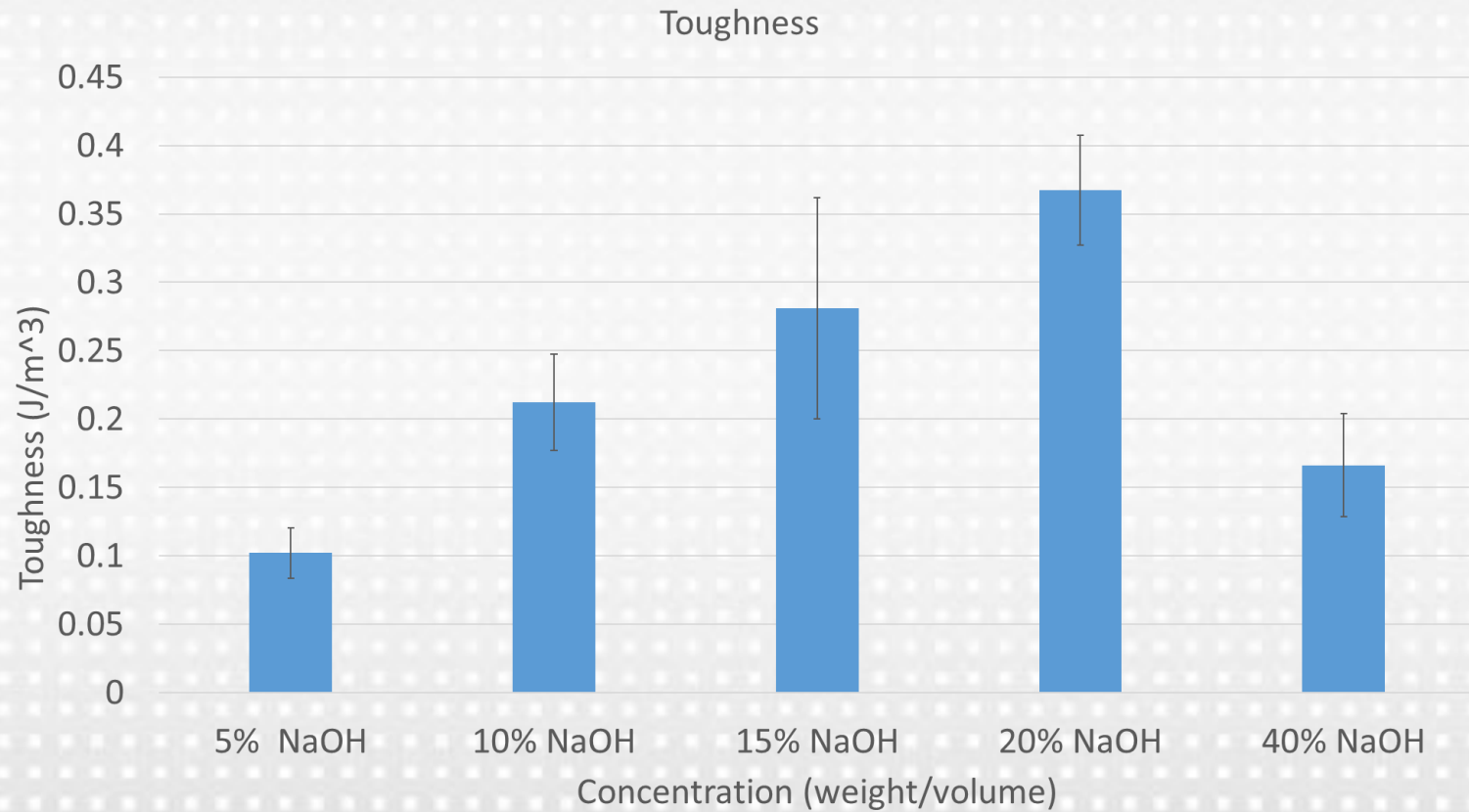
Effect of NaOH conc: Mechanical properties



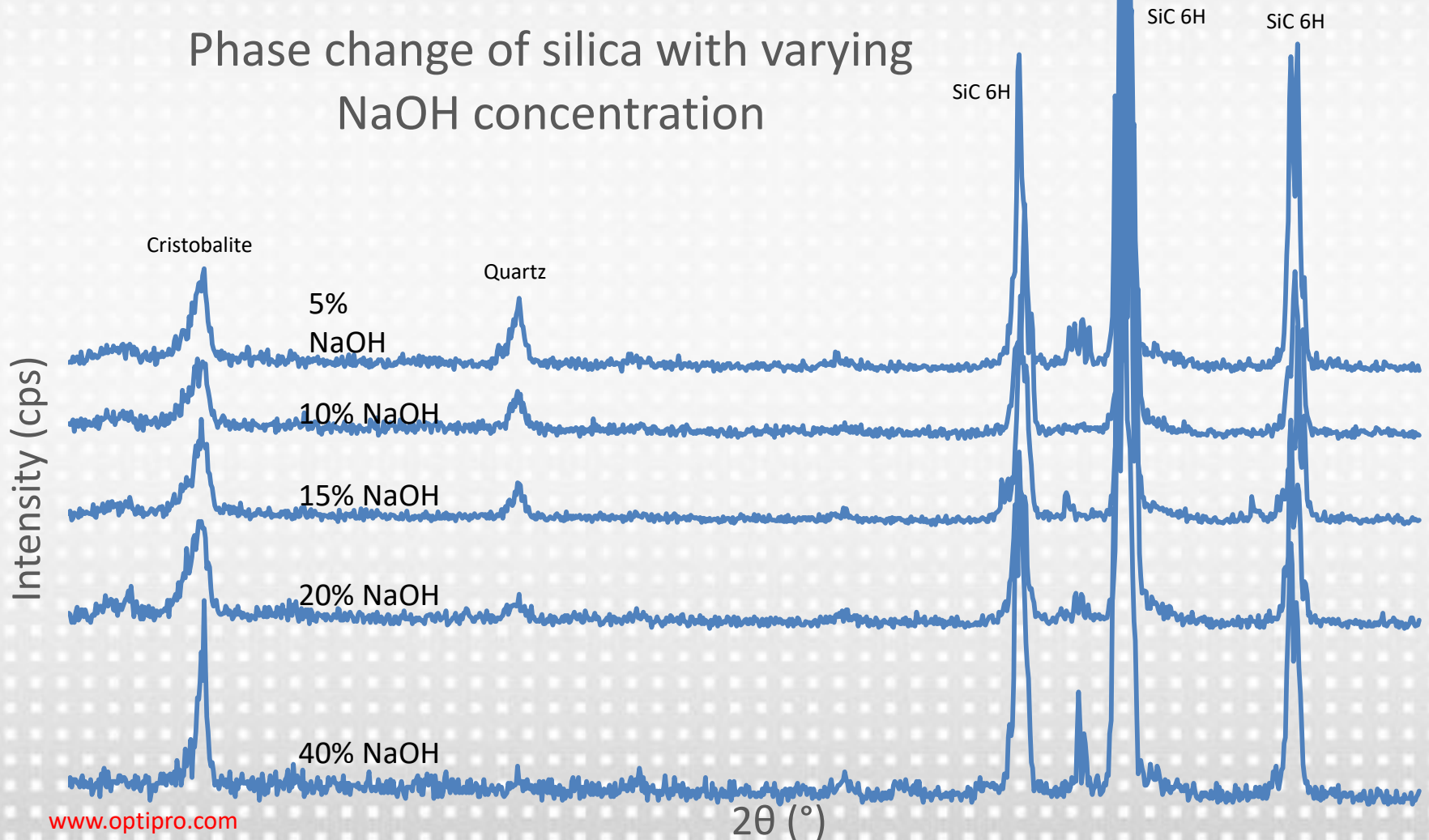
Join the OptiPro Revolution.



Effect of NaOH conc: Mechanical properties



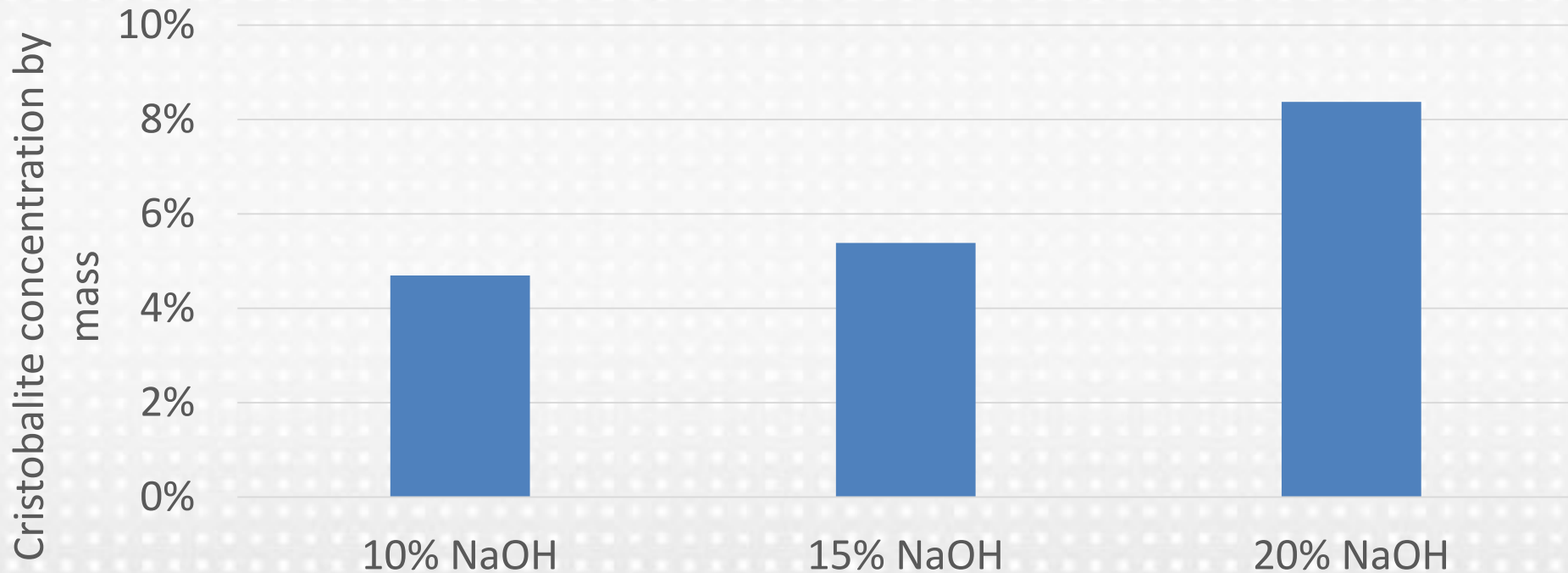
Phase change of silica with varying NaOH concentration



Phase change of silica dependence on NaOH concentration

NaOH Concentration	Percent increase in the intensity of Cristobalite XRD signal compared to that of Quartz
5% NaOH	140%
10% NaOH	180%
15% NaOH	250%
40% NaOH	771%

Cristobalite concentration in samples prepared with different NaOH solutions



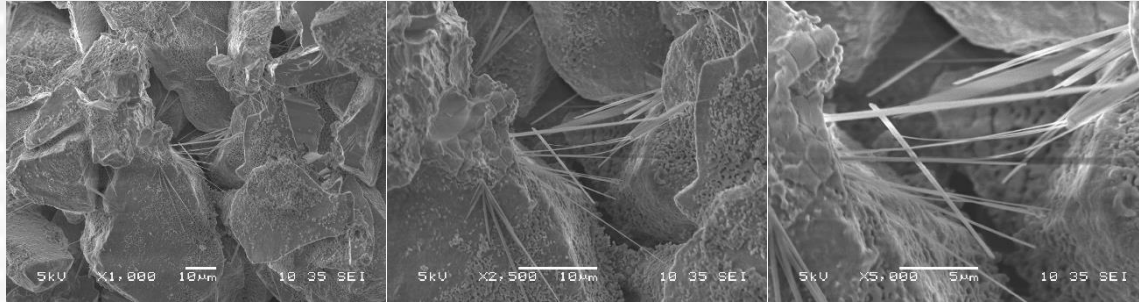
1000X

2500X

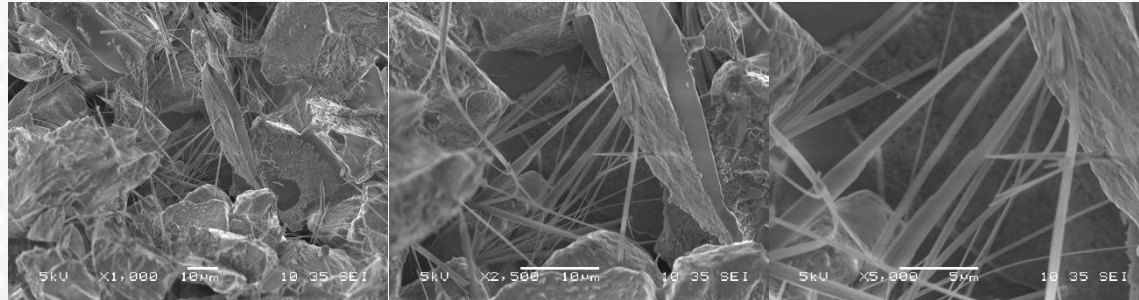
5000X

Fracture Surface Analysis after the mechanical test showing Amazon crystal growth in SiC samples treated with 5, 10 and 15% NaOH

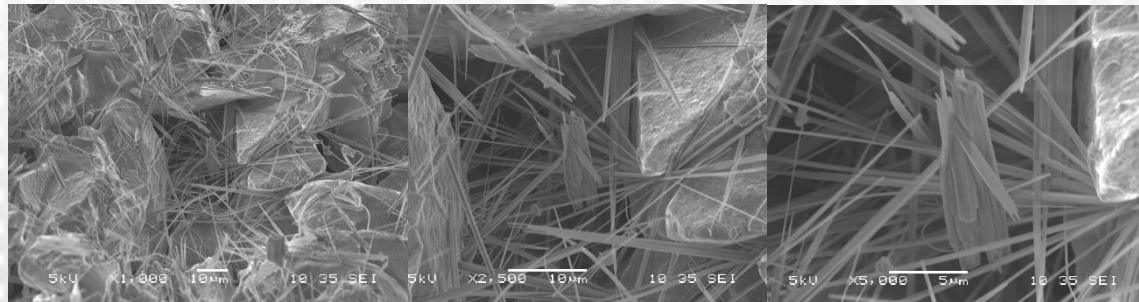
5% NaOH
900C/2h



10% NaOH
900C/2h



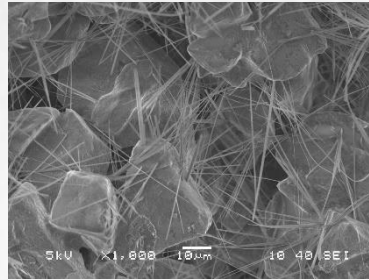
15% NaOH
900C/2h



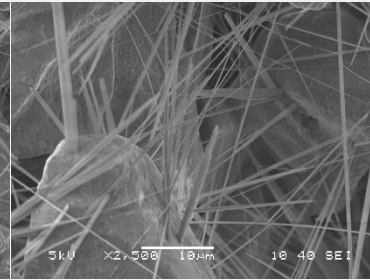
Fracture surface analysis after the mechanical test showing Amazon crystal growth in SiC samples treated with 20, and 40% NaOH

20% NaOH
900C/2h

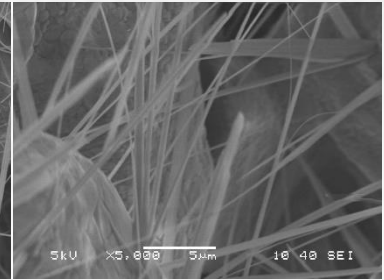
1000X



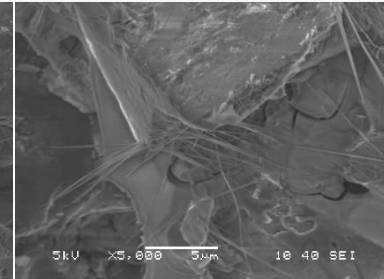
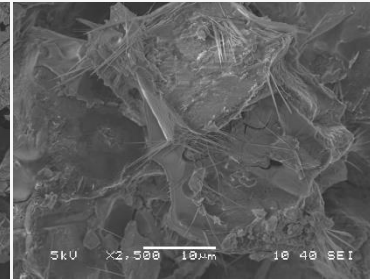
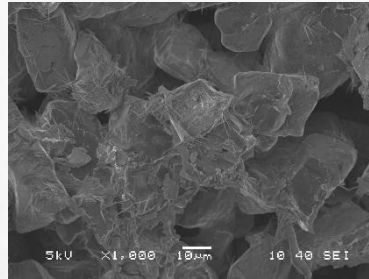
2500X



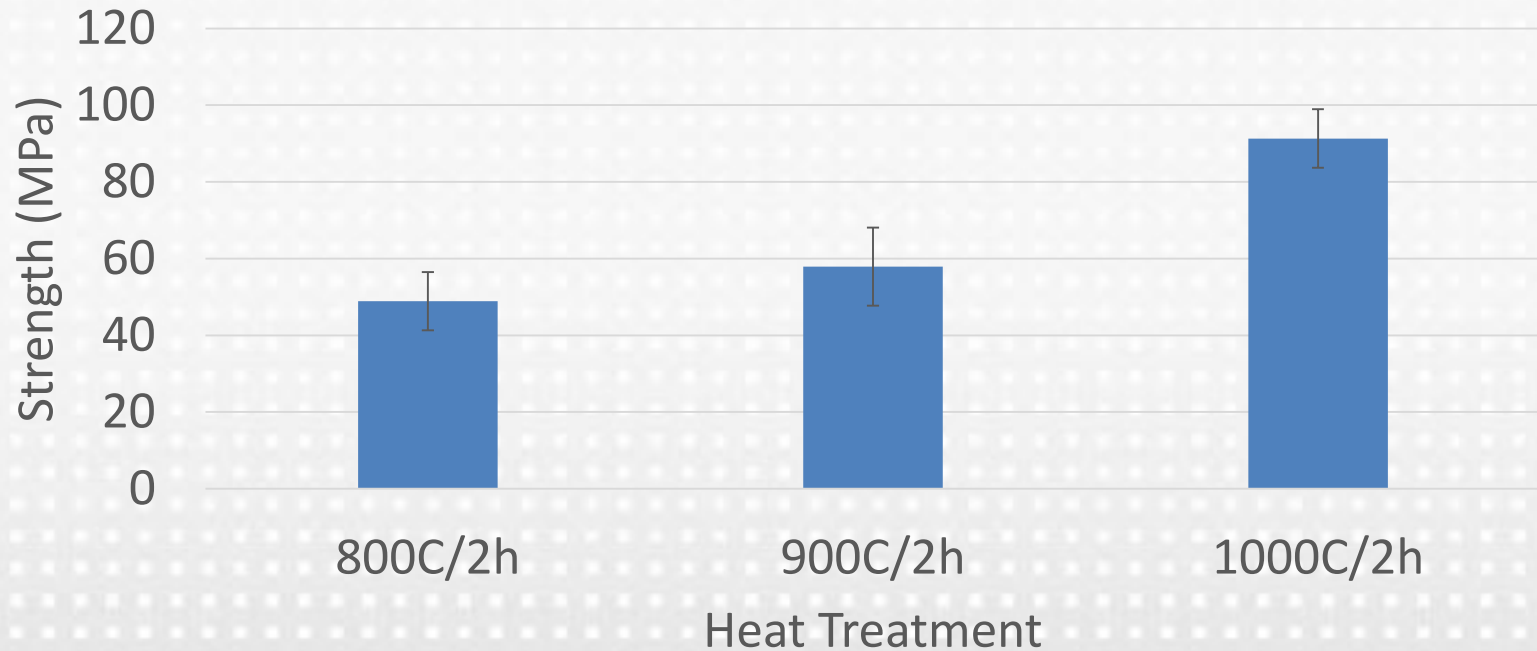
5000X



40% NaOH
900C/2h



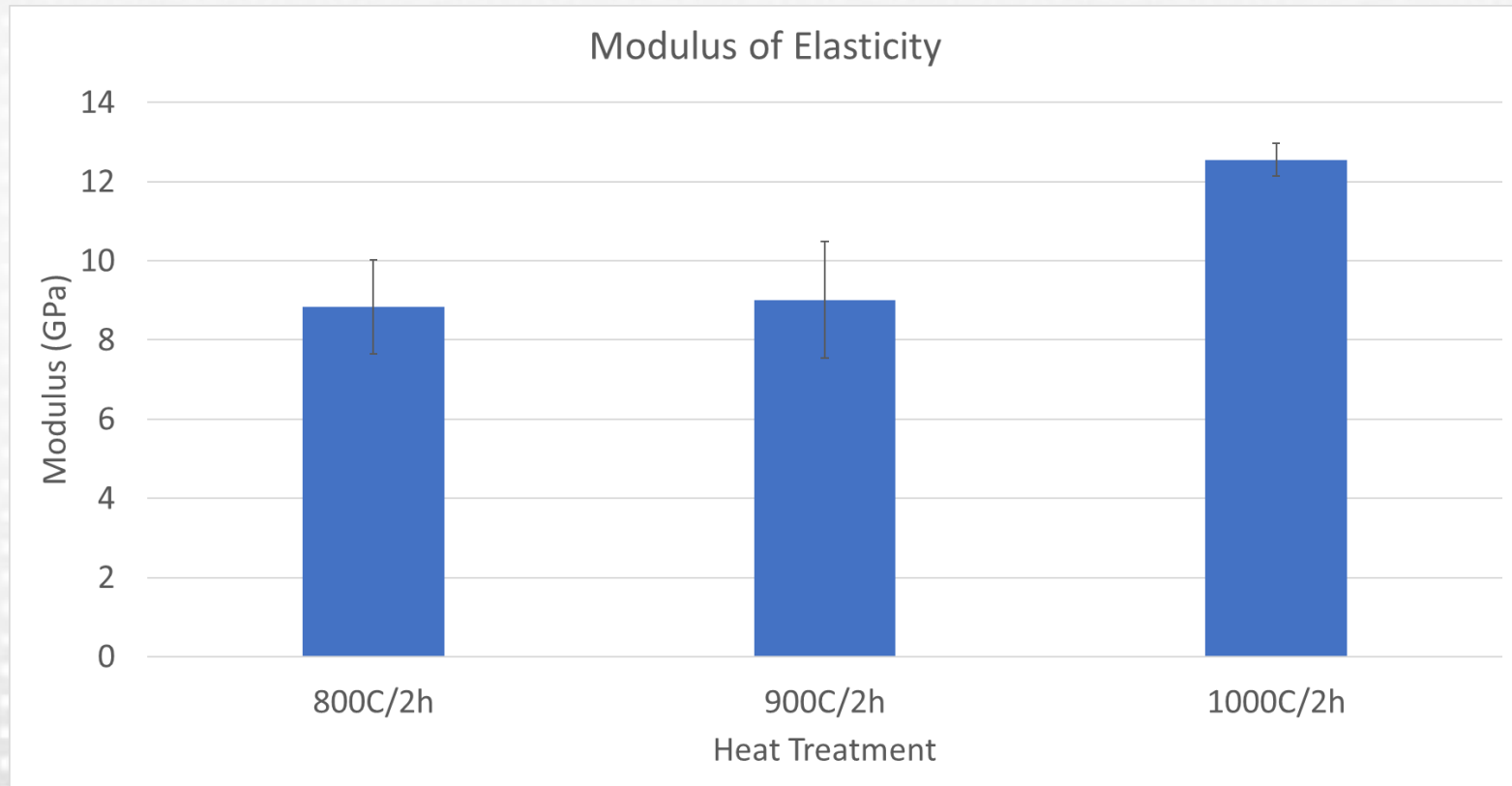
Ultimate Compression Strength



Effect of heat treatment temperature: Mechanical properties



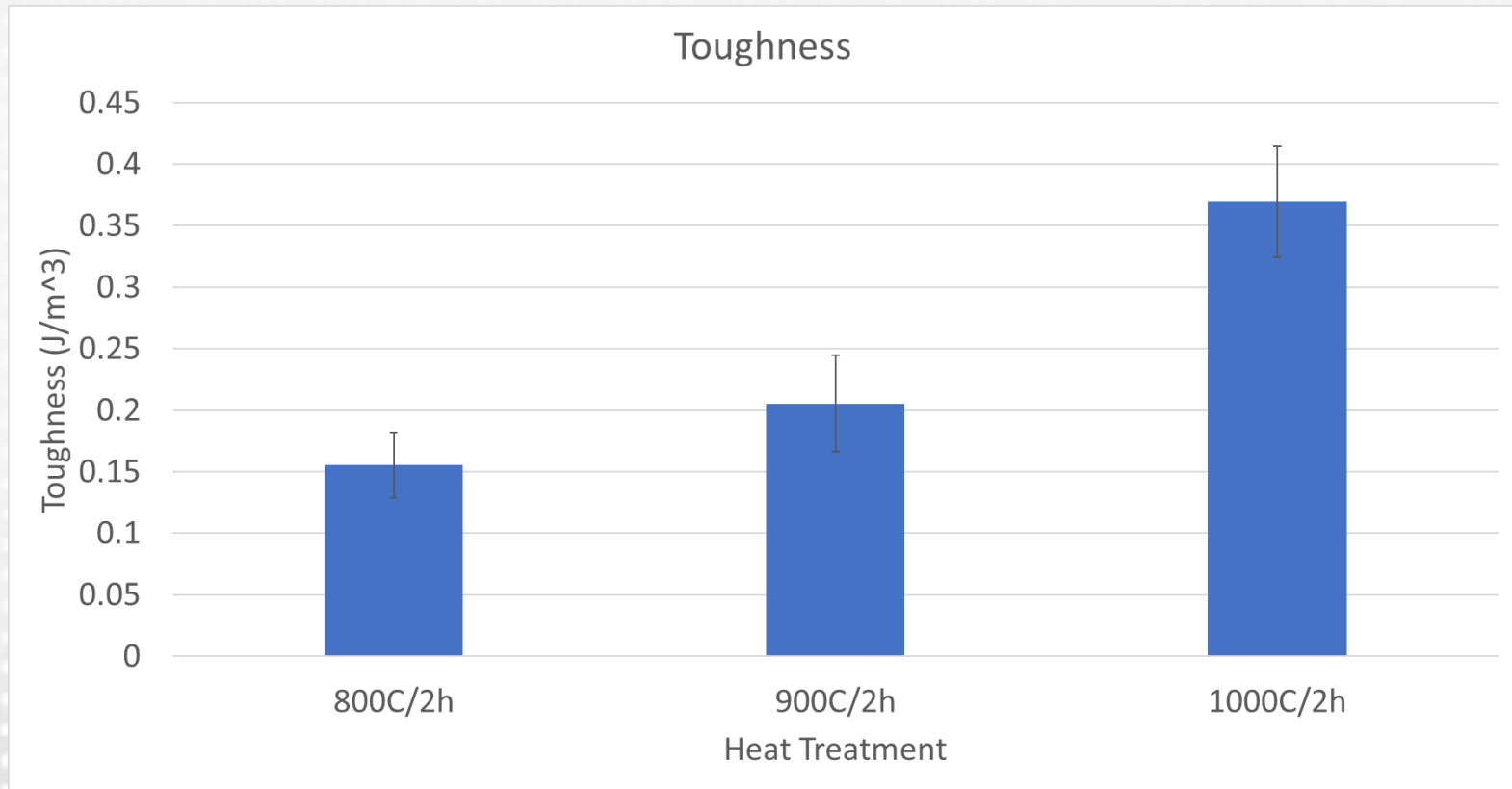
Join the OptiPro Revolution.



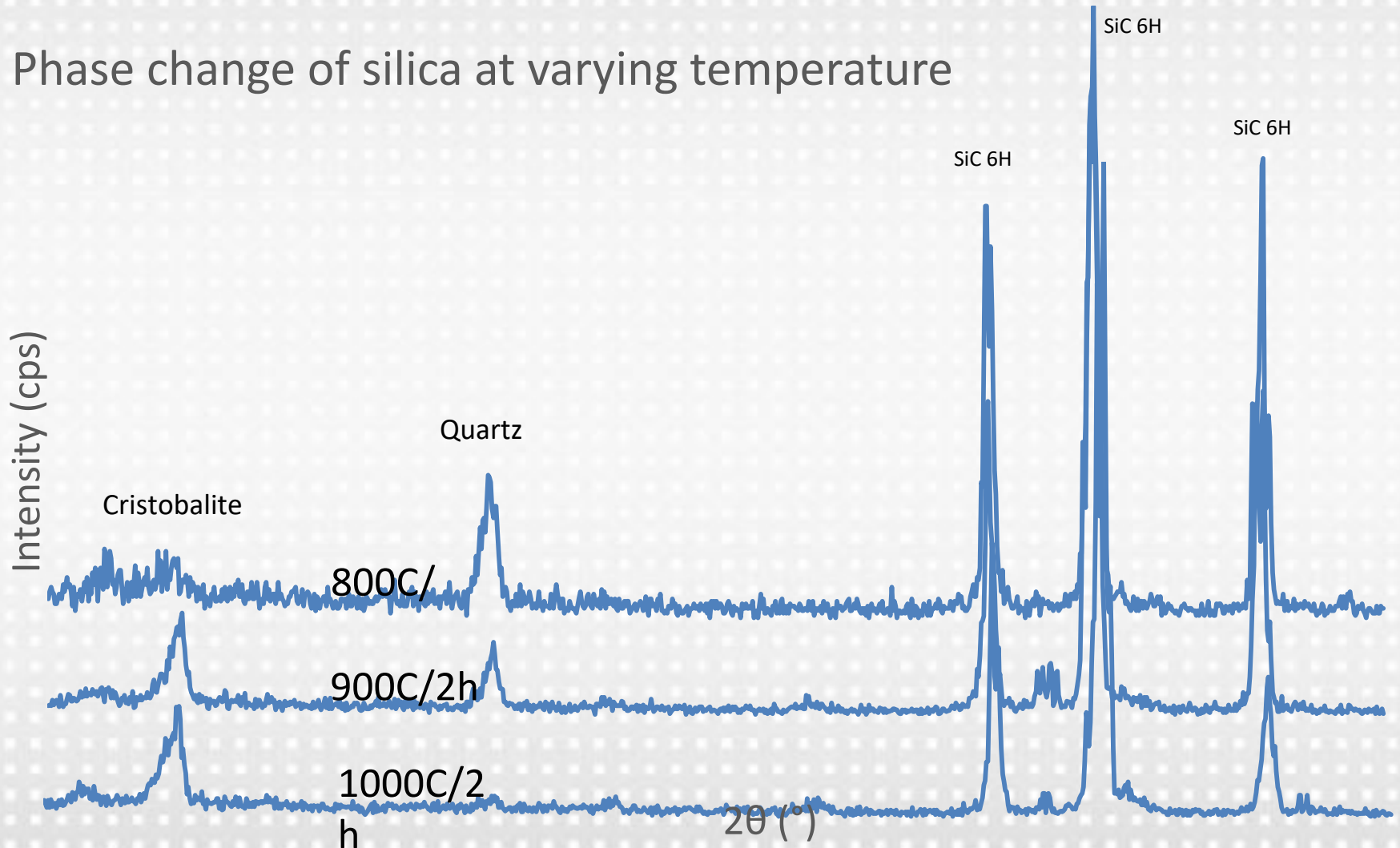
Effect of heat treatment temperature: Mechanical properties



Join the OptiPro Revolution.



Phase change of silica at varying temperature



Phase change of silica dependence on heat treatment temperature

Heat Treatment Temperature	Percent increase in the XRD intensity of Cristobalite compared to that of Quartz
800C/2h	42%
900C/2h	139%
1000C/2h	625%

Fracture Surface showing crystal growth at different temperatures

800C/2h
10% NaOH
Quartz

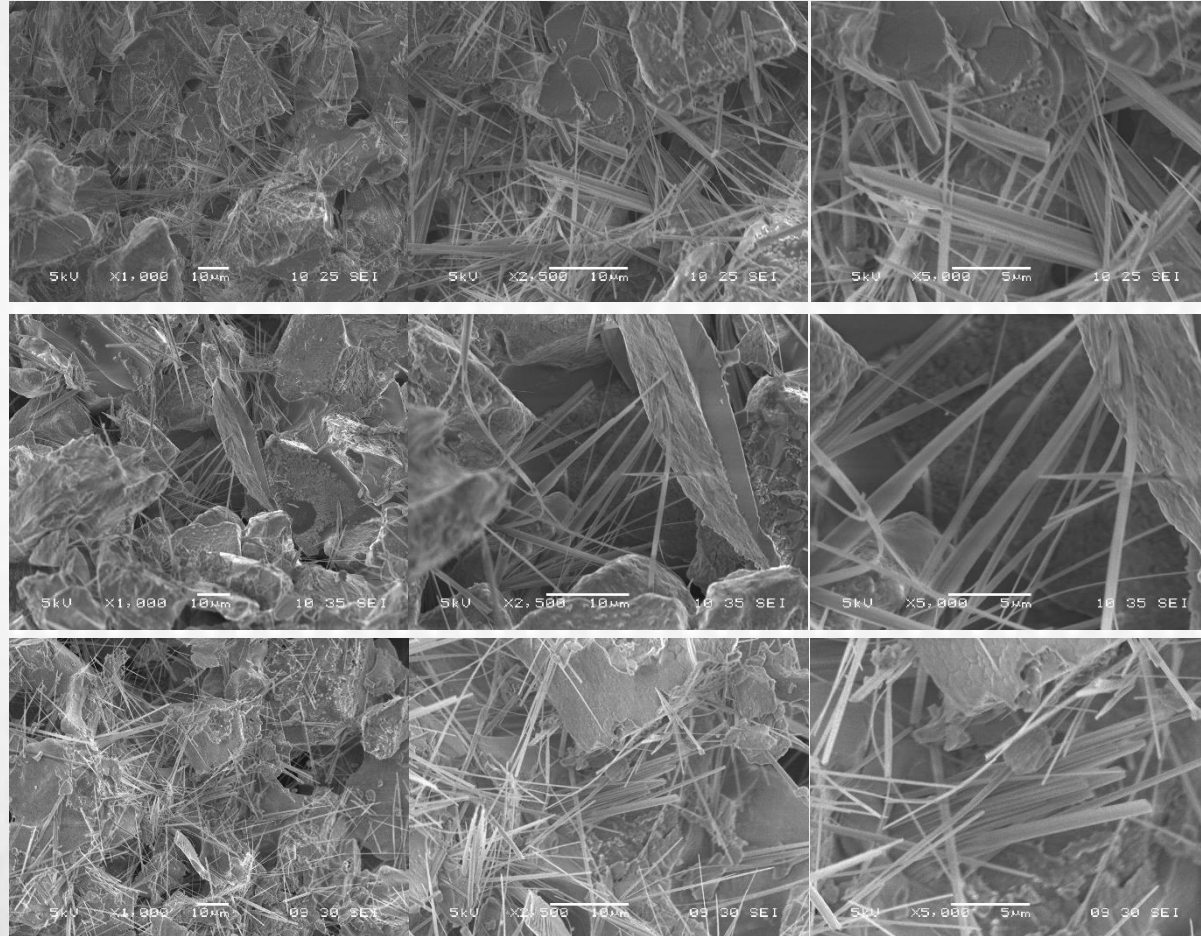
900C/2h
10% NaOH
Quartz and
Cristobalite

1000C/2h
10% NaOH
Cristobalite

1000X

2500X

5000X



Conclusion

- Growth of silica crystals is favored at lower temperature
- Transition of Quartz to Cristobalite occurs at temperature between 800-900 C
- Future work would include growing the crystal first at low temperature then transforming them to Cristobalite