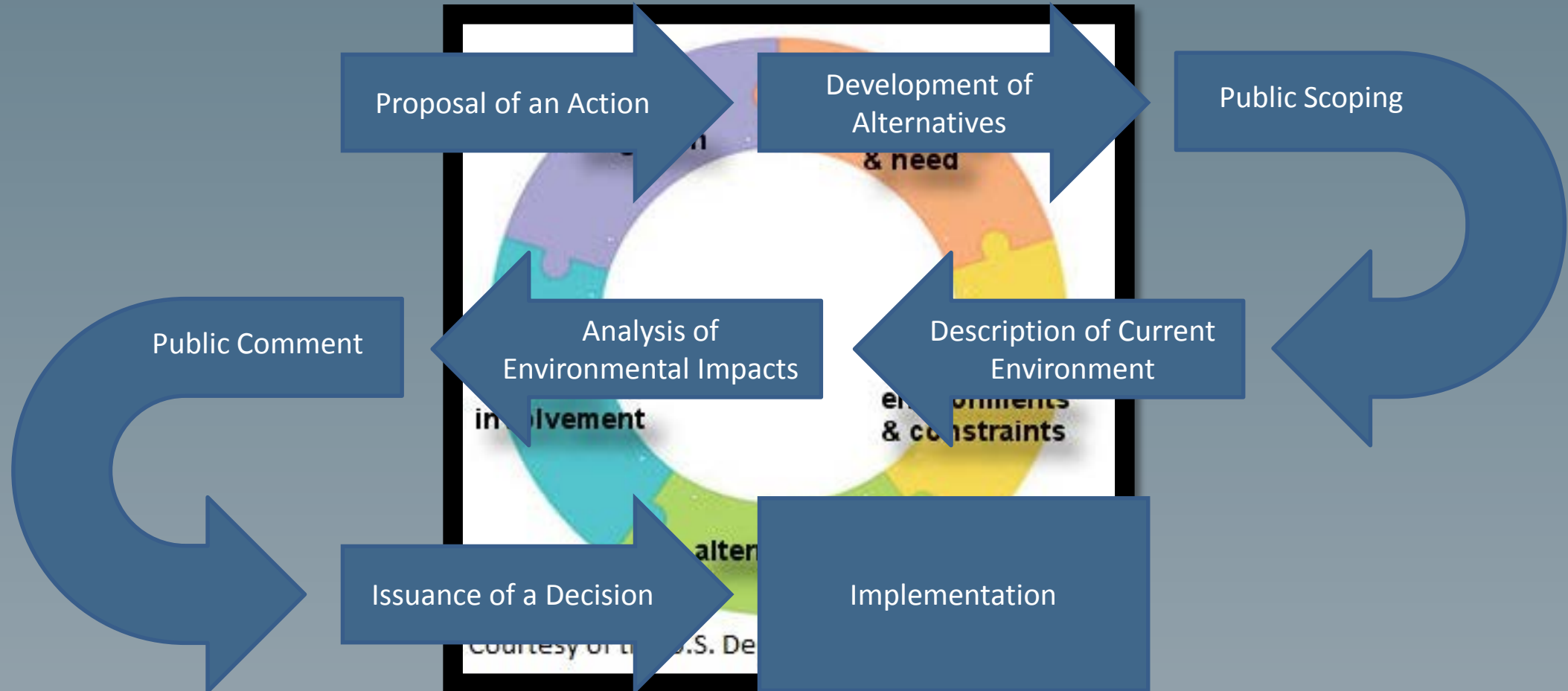


Welcome

TO THE
WALLOPS FLIGHT FACILITY
PUBLIC INFORMATION MEETING
FOR THE DRAFT SITE-WIDE PROGRAMMATIC
ENVIRONMENTAL IMPACT STATEMENT (PEIS)



Environmental Impact Analysis Process



Purpose and Need



Cooperating Agencies



Federal Aviation Administration – Responsible for issuing licenses for operation of commercial space launch sites and commercial launch vehicles.



Federal Highway Administration – As a division of the Department of Transportation is responsible for undertaking design and oversight of the construction of the new Causeway Bridge and approach road.



National Oceanic and Atmospheric Administration, National Environmental Satellite, Data, and Information Service (NOAA-NESDIS) – Wallops Command and Data Acquisition Station is a permanent tenant on the Main Base and may undertake additional operations or improvements to its existing infrastructure.



Department of the Army, Corps of Engineers (USACE) – Responsible for issuing permits for proposed activities that have the potential for dredging or placement of fill in waters of the U.S.; also involved in design and oversight of WFF's Shoreline Restoration and Infrastructure Protection Program.



United States Coast Guard – Responsible for undertaking additional operations or improvements to its existing infrastructure, would issue a permit for the Causeway Bridge reconstruction, and assumes Captain of the Port Authority for clearing the launch range during operations.



U.S. Environmental Protection Agency (EPA) – Responsible for has overseeing permits related to components of the Proposed Action that have the potential for dredging or placement of fill in waters of the U.S.; under Section 309 of the Clean Air Act, EPA has an obligation to review and comment on all Federal EISs.



U.S. Fish and Wildlife Service (USFWS) – Responsible for issuing incidental take statements and providing management of special-status species; partners with NASA on mutually beneficial projects related to the Chincoteague National Wildlife Refuge.



U.S. Navy, Naval Air Systems Command (NAVAIR) – Responsible for increasing existing research, development, test, and evaluation mission tempos and new missions.



U.S. Navy, Naval Sea Systems Command (NAVSEA) – Responsible for undertaking additional operations, improvements to infrastructure, and target launches at the Surface Command System Center, and providing oversight of the Virginia Capes Operating Area offshore of WFF.



U.S. Navy, U.S. Fleet Forces Command – Responsible for conducting pilot proficiency training missions at the Main Base airfield and Navy personnel training ship-board in the VACAPES OPAREA. WFF often supplies range services and target launches during these training exercises.



U.S. Air Force Space Command/Space and Missile Systems Center (AFSPC/SMC) – Responsible for increasing test and evaluation missions and increasing interest in using the Wallops launch range for further missions.



Virginia Commercial Space Flight Authority (Virginia Space) – In partnership with NASA WFF has expanded the development and operation of the Mid-Atlantic Regional Spaceport.



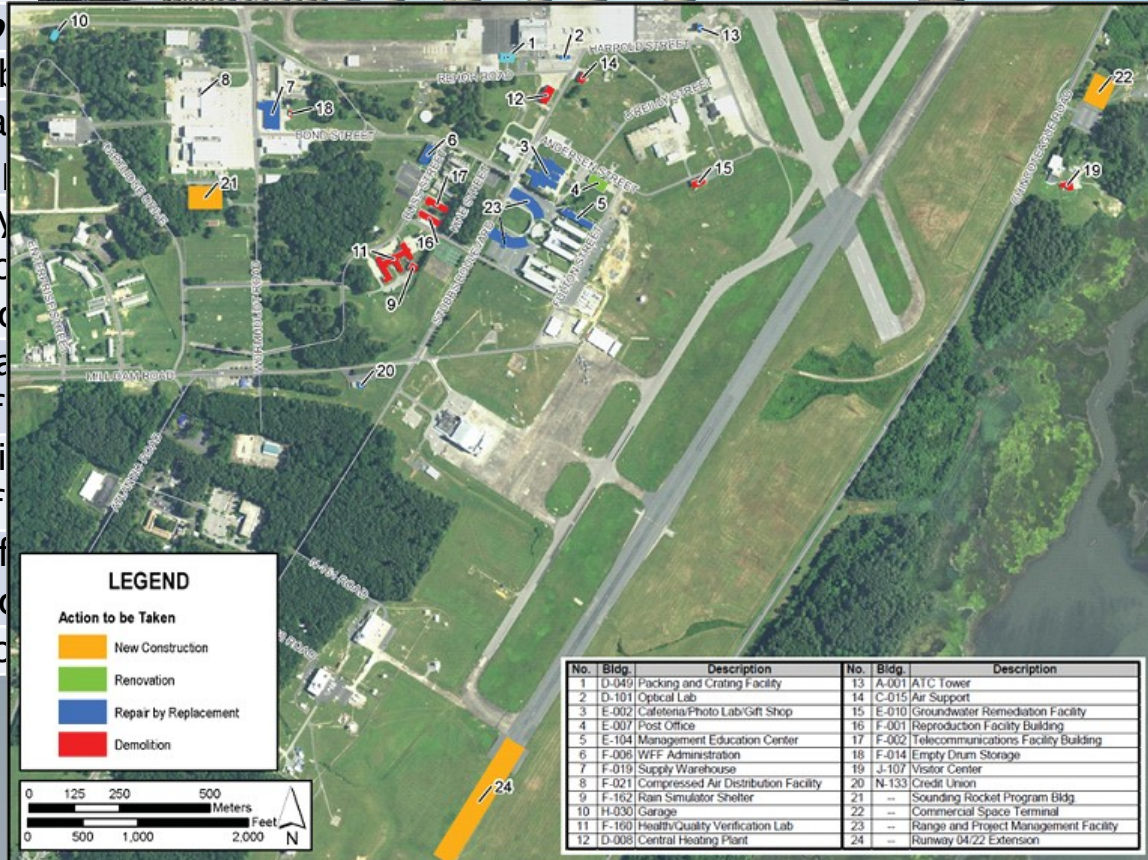
Envelope Concept and NEPA Triggers



Proposed Institutional Actions

Insti
Cons
Dem

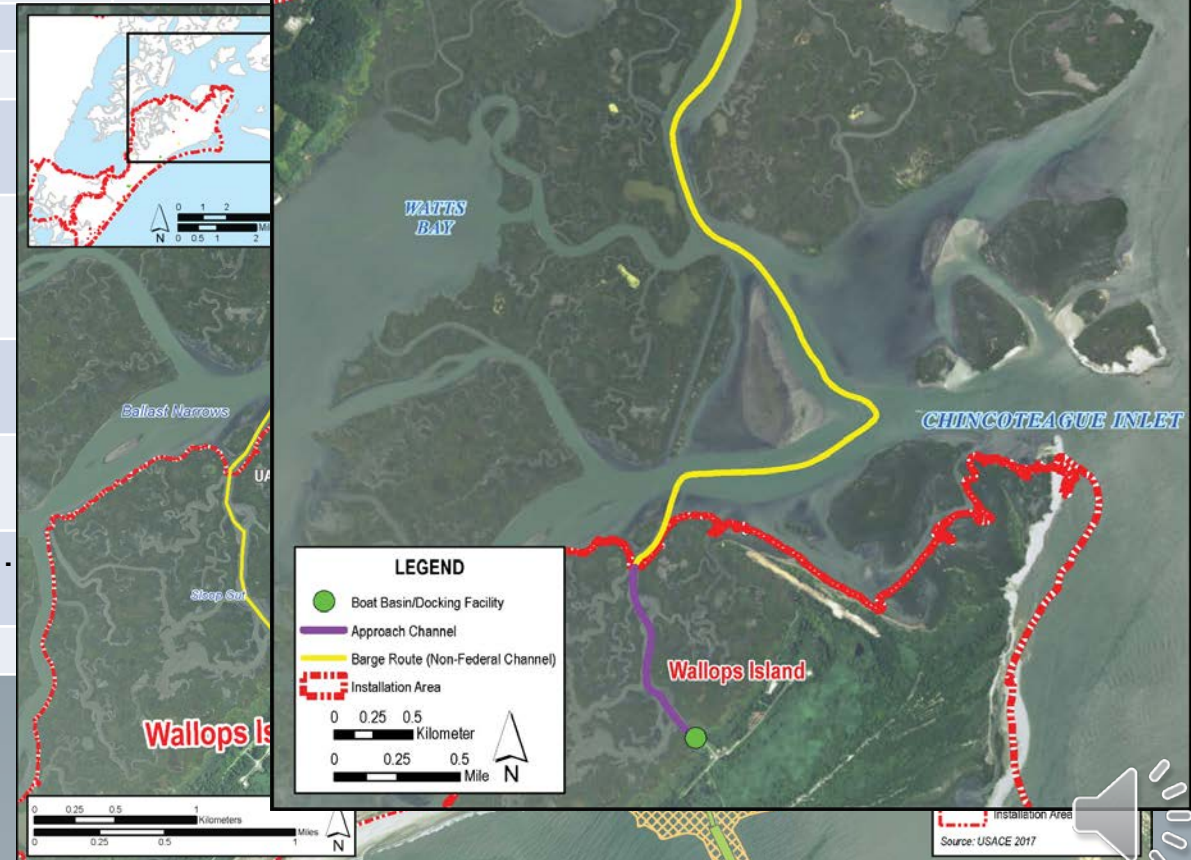
Ro
Fal
Ma
Im
Pay
Pro
Fac
Tra
Inf
Uti
Inf
Saf
Sec
Sto









previous

All new
proposed
development
Operational

grams.



Proposed Mission Actions

Activity	Baseline (No Action)	Change (Proposed Actions)
Scientific Research Processing Education Processing Air Maintenance and Air No Island Operations Or	 	<p>cal</p> <p>No change.</p> <p>No cha</p>   <ul style="list-style-type: none">••• <p>No cha</p>  
Southern Rock Sub Rock	<p>The Black Brant XII is des 5 launches e suborbital</p>	





Resources Evaluated

The N
resou



The m

bold. The NASA WFF Site-wide PEIS includes a detailed wetlands cumulative effects analysis.



How can you be involved?

Your involvement in the decision-making process is important to NASA. There are many ways to submit a comment on the Draft Site-wide PEIS:

1. Fill out a comment form at the public meeting and give it to a NASA representative
2. Provide a verbal comment to the court stenographer at the public meeting
3. Visit the project website:
https://code200-external.gsfc.nasa.gov/250-wff/site-wide_eis
4. Mail, email, or fax your comments:

Shari Miller
NASA Wallops Flight Facility
Mailstop: 250. W
Wallops Island, VA 23337
Shari.A.Miller@nasa.gov
Fax (757) 824-1819

To ensure consideration in the Final Site-wide PEIS, please provide your comments no later than **June 18, 2018**

