

Wallops Flight Facility Climatology

Below is a review of climatology for Wallops Flight Facility (WFF) at Wallops Island, VA. The data include surface and upper-level temperature and wind, lightning, precipitation, snowfall, cloud cover, and sea state.

Surface Data

Location: Wallops Flight Facility, VA (KWAL)

Monthly Surface Wind (1981-2021)

Month	Avg. Wind Speed (kts)	Avg. Wind Direction	Record Peak Gust (mph)
January	8.50	308.26	70 (1/23/16)
February	8.90	325.08	63 (2/13/72)
March	9.50	341.68	68 (3/31/89)
April	9.55	200.29	61 (4/6/71)
May	8.41	149.88	67 (5/11/08)
June	8.07	186.12	69 (6/26/88)
July	7.30	197.76	67 (7/25/94)
August	7.09	165.48	68 (8/4/20)
September	8.13	071.05	70 (9/27/85)
October	8.06	000.94	68 (10/29/12)
November	7.72	313.71	76 (11/12/68)
December	7.87	297.17	73 (12/10/92)

Hourly Surface Wind (1981-2021)

January

Time (UTC)	Avg. Wind Speed (kts)	Avg. Wind Direction	Time (UTC)	Avg. Wind Speed (kts)	Avg. Wind Direction
00	7.14	370.28	12	7.60	310.17
01	7.26	307.93	13	8.52	309.64
02	7.31	300.89	14	9.46	318.55
03	7.62	308.06	15	9.75	317.07
04	7.94	302.59	16	10.42	311.01
05	7.81	302.35	17	10.64	305.05
06	7.77	305.01	18	10.31	300.93
07	7.57	308.81	19	10.04	302.23

08	7.76	308.09	20	9.63	309.12
09	7.74	309.02	21	8.46	310.82
10	7.65	304.67	22	7.35	317.88
11	7.68	302.53	23	7.18	313.68

February

Time (UTC)	Avg. Wind Speed (kts)	Avg. Wind Direction	Time (UTC)	Avg. Wind Speed (kts)	Avg. Wind Direction
00	8.11	332.85	12	7.58	324.58
01	8.03	325.76	13	9.15	329.89
02	8.20	331.20	14	10.13	338.13
03	7.84	321.90	15	10.44	337.55
04	7.30	313.89	16	11.04	328.03
05	7.22	307.40	17	11.01	316.91
06	7.55	316.90	18	10.93	317.00
07	7.59	326.70	19	10.84	311.58
08	7.68	330.33	20	10.52	315.20
09	7.37	329.11	21	9.62	322.80
10	7.38	326.27	22	8.35	332.21
11	7.59	320.49	23	7.80	327.44

March

Time (UTC)	Avg. Wind Speed (kts)	Avg. Wind Direction	Time (UTC)	Avg. Wind Speed (kts)	Avg. Wind Direction
00	8.19	090.56	12	8.46	350.07
01	8.45	280.38	13	9.86	351.44
02	8.37	310.67	14	10.54	354.25
03	8.31	332.09	15	11.09	353.66
04	8.35	329.56	16	11.45	341.22
05	8.14	339.36	17	11.44	328.83
06	7.88	332.31	18	11.43	307.36
07	7.83	336.82	19	11.66	292.06
08	7.73	336.36	20	11.28	250.88
09	7.76	338.14	21	10.74	257.88
10	8.02	350.68	22	9.24	112.74
11	8.32	347.26	23	8.47	117.50

April

Time (UTC)	Avg. Wind Speed (kts)	Avg. Wind Direction	Time (UTC)	Avg. Wind Speed (kts)	Avg. Wind Direction
00	8.81	154.40	12	8.71	319.30
01	8.58	158.64	13	10.18	328.72
02	8.50	169.94	14	10.77	326.71
03	8.04	194.45	15	11.02	345.66
04	7.66	209.54	16	11.68	134.38
05	7.62	252.00	17	11.87	188.71
06	7.53	264.31	18	11.84	182.38
07	7.60	288.68	19	11.97	182.16
08	7.61	295.72	20	11.62	174.62
09	7.49	284.70	21	11.05	170.47
10	7.26	288.17	22	10.00	160.43
11	8.07	335.52	23	9.13	148.00

May

Time (UTC)	Avg. Wind Speed (kts)	Avg. Wind Direction	Time (UTC)	Avg. Wind Speed (kts)	Avg. Wind Direction
00	7.84	141.85	12	7.79	332.01
01	7.65	150.00	13	8.74	001.03
02	7.45	155.05	14	9.52	036.04
03	7.28	166.23	15	9.83	105.13
04	7.03	174.75	16	10.37	121.94
05	6.71	225.76	17	10.69	151.91
06	6.28	244.46	18	10.63	152.51
07	6.07	292.43	19	10.71	156.85
08	6.09	324.11	20	10.66	164.26
09	6.22	013.59	21	10.29	155.40
10	6.48	359.21	22	8.97	152.56
11	7.13	338.66	23	8.32	141.86

June

Time (UTC)	Avg. Wind Speed (kts)	Avg. Wind Direction	Time (UTC)	Avg. Wind Speed (kts)	Avg. Wind Direction
00	7.59	170.55	12	7.26	264.55
01	7.12	180.47	13	8.37	284.96
02	7.13	191.63	14	8.85	146.41
03	6.86	193.14	15	9.13	167.22

04	6.71	198.38	16	9.86	163.06
05	6.12	210.84	17	10.31	169.49
06	6.14	216.23	18	10.37	176.10
07	5.69	233.23	19	10.72	171.45
08	5.63	247.91	20	10.59	173.25
09	5.49	241.57	21	10.15	171.90
10	6.00	248.24	22	9.52	164.96
11	6.61	258.27	23	8.24	173.55

July

Time (UTC)	Avg. Wind Speed (kts)	Avg. Wind Direction	Time (UTC)	Avg. Wind Speed (kts)	Avg. Wind Direction
00	6.86	189.02	12	6.52	258.99
01	6.49	192.95	13	7.65	256.53
02	6.34	200.39	14	7.98	202.91
03	6.25	206.90	15	8.36	177.42
04	5.98	216.48	16	9.02	180.99
05	5.38	221.13	17	9.54	177.76
06	5.19	235.94	18	9.61	178.32
07	5.03	243.89	19	10.09	180.54
08	4.96	250.58	20	10.02	181.27
09	4.79	256.43	21	9.56	181.10
10	4.87	258.50	22	8.79	180.62
11	5.51	255.76	23	7.64	184.11

August

Time (UTC)	Avg. Wind Speed (kts)	Avg. Wind Direction	Time (UTC)	Avg. Wind Speed (kts)	Avg. Wind Direction
00	6.57	169.95	12	6.40	345.45
01	6.28	173.93	13	7.42	041.27
02	6.00	188.56	14	8.09	070.74
03	5.84	193.25	15	8.30	123.26
04	5.23	205.83	16	8.84	141.34
05	5.14	230.21	17	9.63	147.28
06	4.96	251.58	18	9.62	149.95
07	4.77	244.76	19	9.97	154.52
08	4.58	280.28	20	9.55	160.32
09	4.54	296.17	21	9.00	158.51
10	4.61	293.65	22	8.26	159.09
11	5.24	307.60	23	7.46	163.60

September

Time (UTC)	Avg. Wind Speed (kts)	Avg. Wind Direction	Time (UTC)	Avg. Wind Speed (kts)	Avg. Wind Direction
00	7.29	102.51	12	6.97	029.50
01	7.08	095.53	13	8.72	041.79
02	7.06	091.44	14	9.52	059.02
03	6.81	084.28	15	9.69	067.08
04	6.77	067.23	16	10.43	077.91
05	6.62	041.98	17	10.76	092.51
06	6.44	043.94	18	10.37	097.14
07	6.22	024.78	19	10.70	101.77
08	6.23	015.60	20	10.41	095.76
09	6.18	016.55	21	9.68	099.11
10	6.07	011.06	22	8.17	095.16
11	6.26	016.83	23	7.30	098.78

October

Time (UTC)	Avg. Wind Speed (kts)	Avg. Wind Direction	Time (UTC)	Avg. Wind Speed (kts)	Avg. Wind Direction
00	6.94	022.69	12	7.23	350.13
01	7.24	030.20	13	8.62	355.12
02	7.04	010.01	14	9.46	002.43
03	6.81	342.21	15	9.64	011.04
04	7.00	353.50	16	10.27	016.89
05	6.54	342.75	17	10.46	011.71
06	6.51	350.78	18	10.11	028.07
07	6.50	346.78	19	10.33	021.18
08	6.63	346.63	20	9.82	025.09
09	6.62	345.57	21	8.55	036.13
10	6.61	340.70	22	7.45	033.11
11	6.63	343.26	23	6.69	021.35

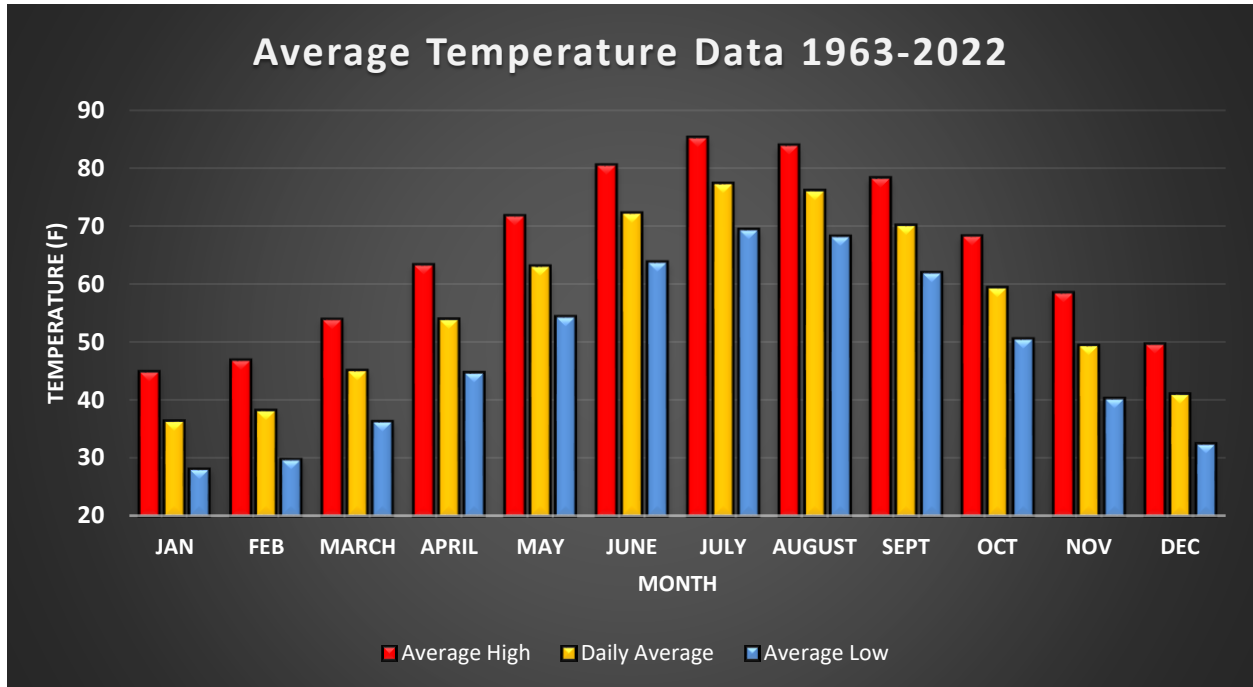
November

Time (UTC)	Avg. Wind Speed (kts)	Avg. Wind Direction	Time (UTC)	Avg. Wind Speed (kts)	Avg. Wind Direction
00	6.43	295.90	12	6.71	317.67
01	6.60	310.39	13	7.89	325.30
02	6.48	311.84	14	9.06	326.04
03	6.45	309.40	15	9.52	328.88
04	6.60	304.50	16	10.03	322.16
05	6.66	300.23	17	10.23	310.90
06	6.64	299.88	18	9.97	298.76
07	6.50	308.88	19	9.90	313.42
08	6.37	311.94	20	9.06	308.17
09	6.44	313.02	21	7.73	306.53
10	6.28	313.82	22	6.73	296.01
11	6.31	314.55	23	6.96	330.25

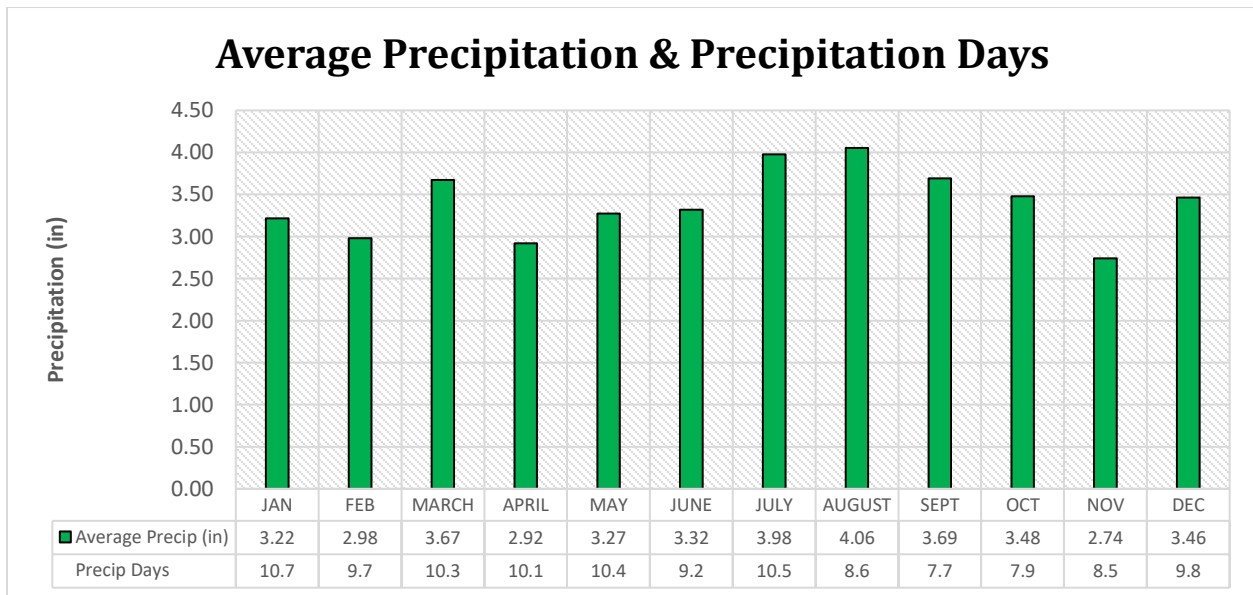
December

Time (UTC)	Avg. Wind Speed (kts)	Avg. Wind Direction	Time (UTC)	Avg. Wind Speed (kts)	Avg. Wind Direction
00	6.84	290.24	12	7.00	307.20
01	6.98	281.12	13	7.92	306.04
02	7.01	288.38	14	8.81	315.09
03	7.05	281.66	15	9.20	312.86
04	7.01	285.49	16	9.92	307.39
05	7.02	293.94	17	9.87	302.71
06	7.14	287.63	18	9.64	299.39
07	7.12	284.52	19	9.64	300.70
08	7.07	288.32	20	8.84	293.03
09	6.97	292.46	21	7.59	295.43
10	7.03	298.47	22	6.82	290.21
11	6.96	302.20	23	6.73	266.47

Surface Temperature (1963-2022)

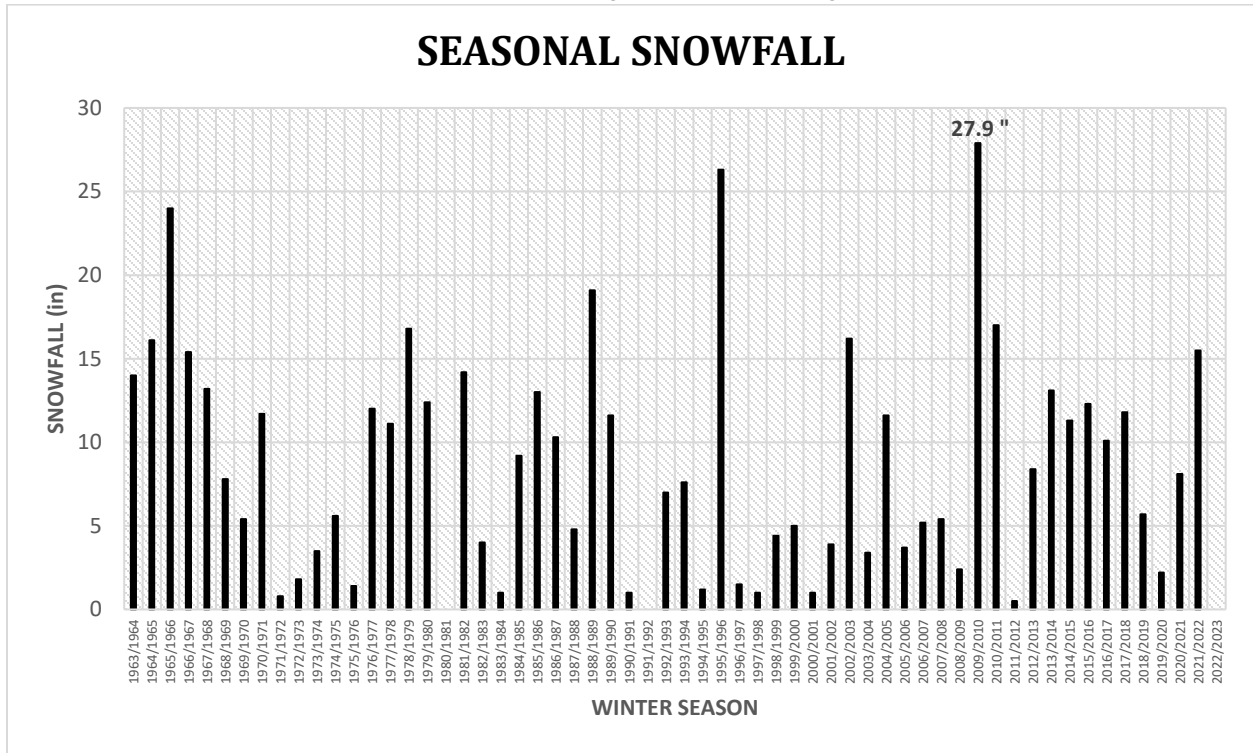


Precipitation (1963-2022)



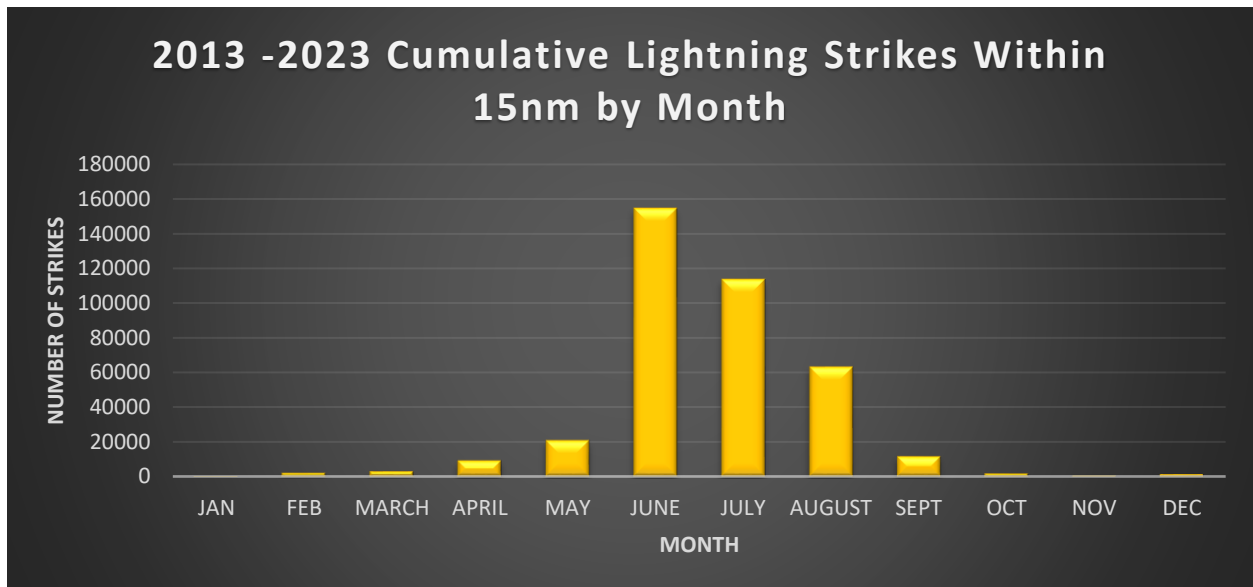
Snowfall (1963-2023)

SEASONAL SNOWFALL

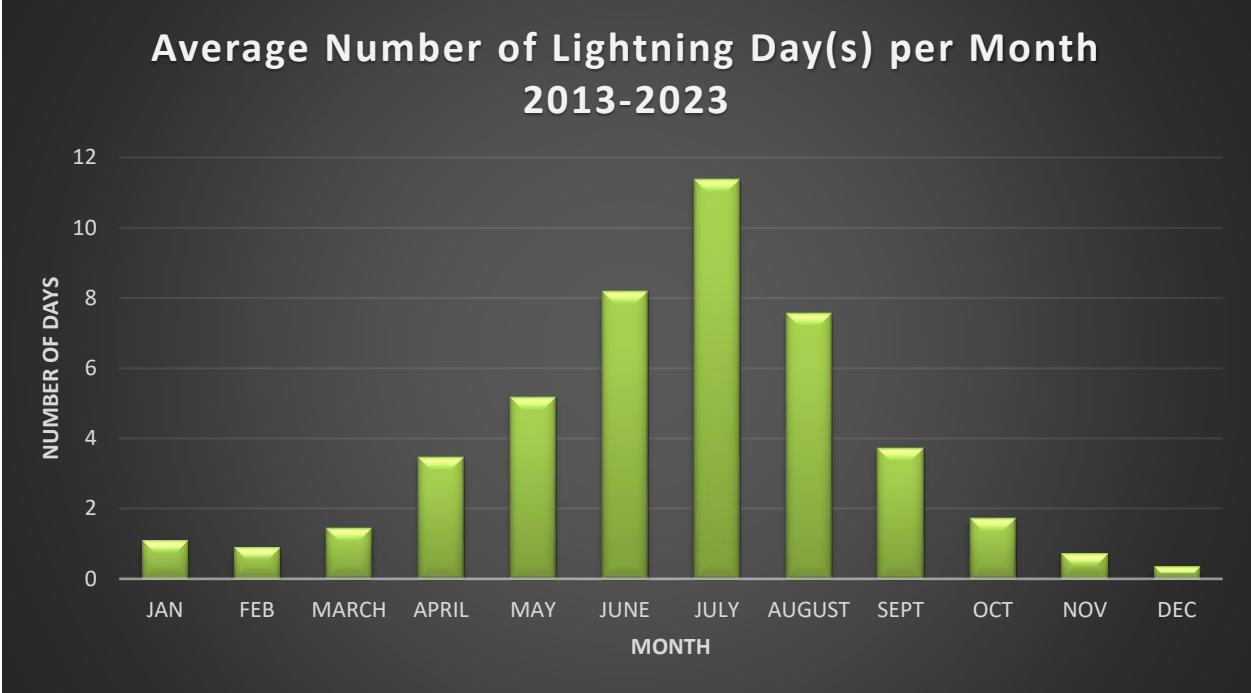


Lightning Data

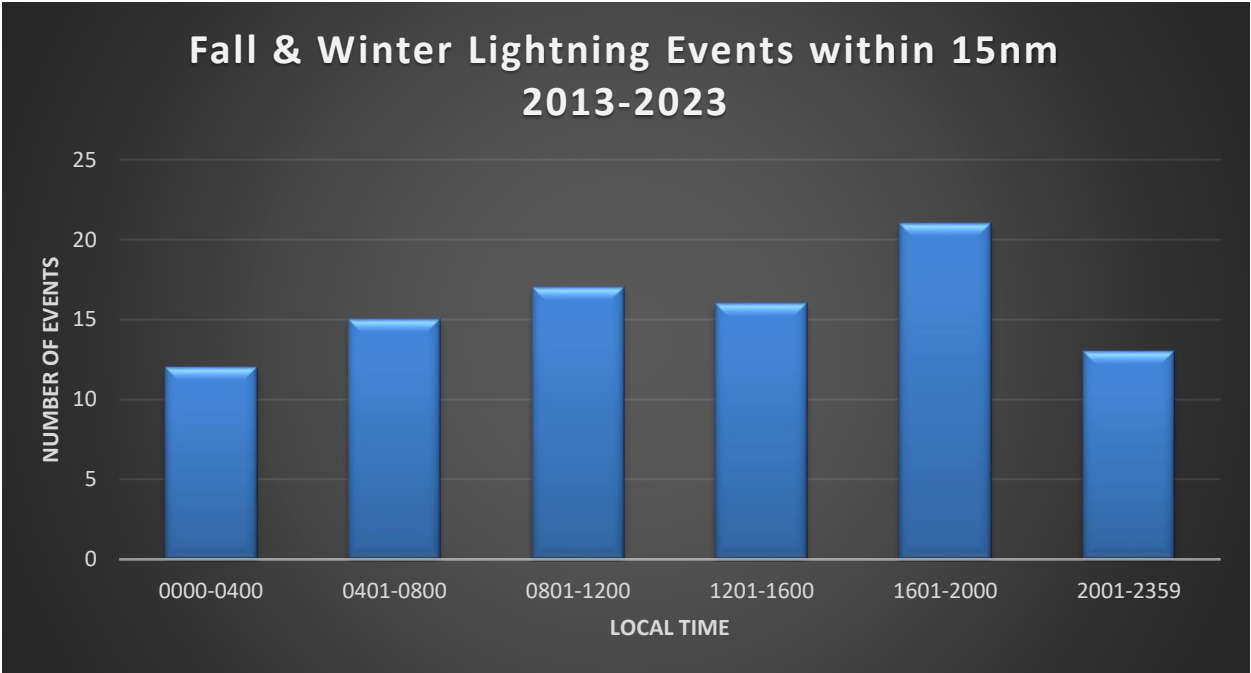
SOURCE: Earth Networks Total Lightning Network. Includes cloud-to-cloud, cloud-to-ground, and intra-cloud lightning detected within 15 nautical miles (nm) of WFF.



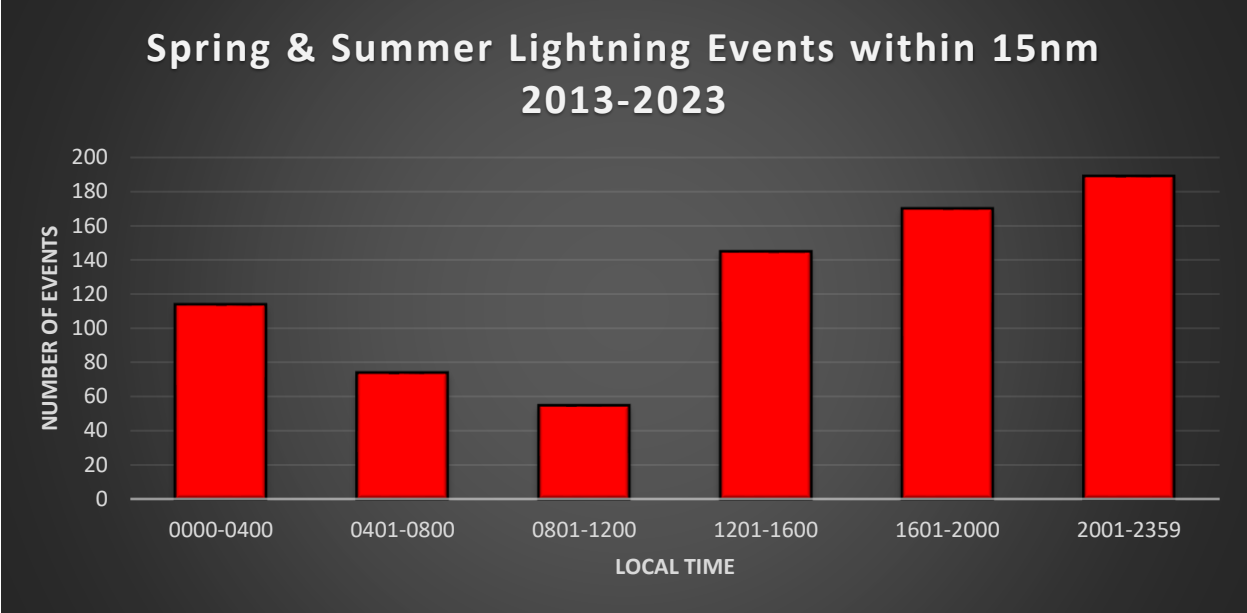
*Cumulative total strikes for each month.



*Lightning day defined as day with at least one (1) lightning strike within 15nm.



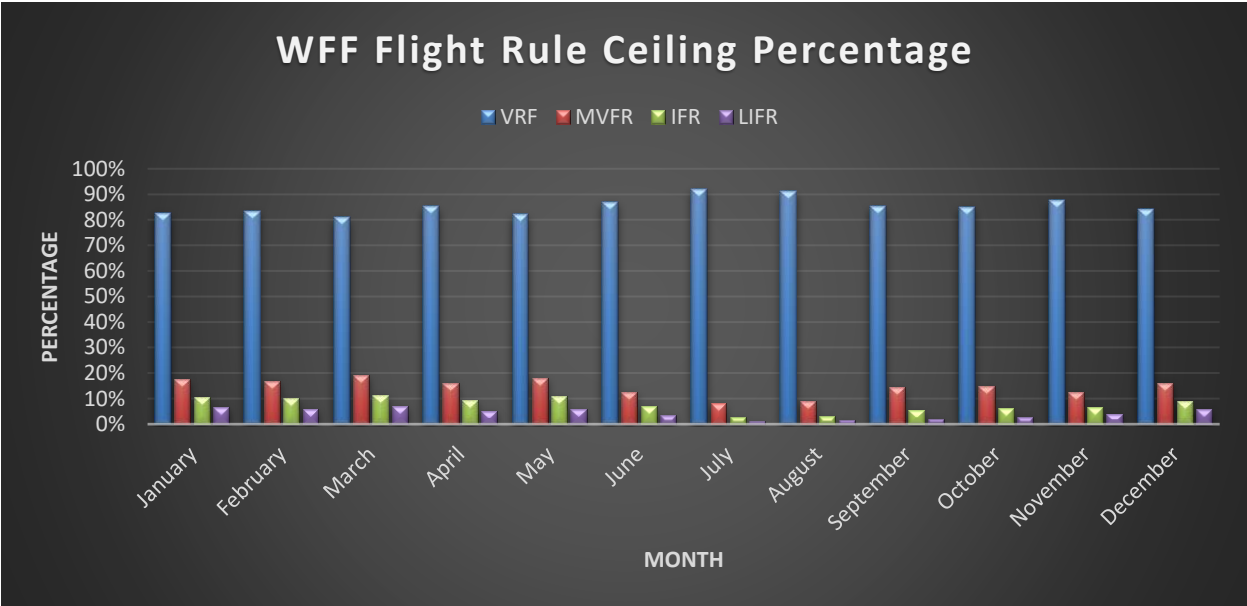
*Fall & Winter defined as October – March.



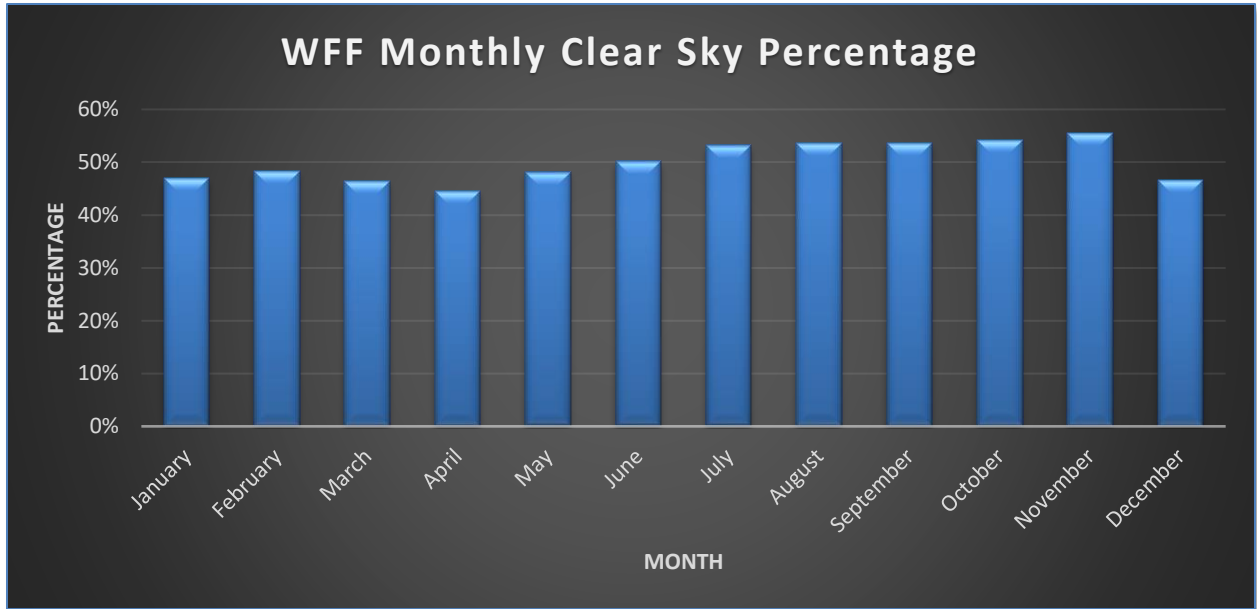
*Spring & Summer defined as April – September.

Sky Coverage / Cloud Data

SOURCE: KWAL ASOS (1997-2013)



* Wallops Flight Facility flight rule cloud ceiling percentage by month from 1997-2017. Flight rule percentage is calculated based on cloud ceiling height. VFR is greater than 3000'. MVFR is less or equal to 3000'. IFR is less than 1000'. LIFR is less than 500'.



*Percentage of time with clear skies

Upper-Level Data

SOURCE: National Weather Service (NWS) upper air observations (1981-2021) via balloons released from KWAL at 00 & 12 UTC.

January

00Z

Pressure Level (mb)	Average Height (m)	Average Temperature (°C)	Average Dewpoint (°C)	Average Wind Direction	Average Wind Speed (kts)
925	785.09	1.94	-6.66	276.60	23.37
850	1463.64	-0.47	-11.06	275.40	26.18
700	3001.97	-5.86	-20.65	269.42	38.18
500	5569.78	-20.5	-35.17	266.21	59.54
300	9162.19	-45.11	-58.02	264.19	89.24
200	11792.15	-55.73	-73.63	265.93	95.25
100	16155.84	-62.01	-82.81	268.19	61.96
10	30601.88	-51.23	-81.12	276.26	48.74

12Z

Pressure Level (mb)	Average Height (m)	Average Temperature (°C)	Average Dewpoint (°C)	Average Wind Direction	Average Wind Speed (kts)
925	781.87	0.62	-7.37	283.98	24.45
850	1459.34	-1.19	-12.09	271.99	26.54
700	2994.42	-6.49	-20.89	265.65	39.19
500	5556.93	-20.84	-35.18	264.54	60.80
300	9146.40	-45.23	-58.31	264.12	89.95
200	11775.45	-55.76	-73.37	266.18	96.02
100	16139.93	-61.88	-82.96	265.58	62.15
10	30594.16	-49.77	-78.35	265.82	48.38

February**00Z**

Pressure Level (mb)	Average Height (m)	Average Temperature (°C)	Average Dewpoint (°C)	Average Wind Direction	Average Wind Speed (kts)
925	779.81	2.53	-6.39	273.17	23.69
850	1463.74	0.27	-11.09	274.98	26.90
700	3004.19	-5.80	-20.10	271.83	38.28
500	5571.79	-20.51	-35.31	268.27	58.55
300	9164.47	-45.24	-57.44	266.42	87.93
200	11789.98	-55.65	-72.68	268.14	94.82
100	16162.96	-61.67	-82.91	269.82	60.20
10	30630.64	-49.98	-81.02	283.83	37.45

12Z

Pressure Level (mb)	Average Height (m)	Average Temperature (°C)	Average Dewpoint (°C)	Average Wind Direction	Average Wind Speed (kts)
925	780.32	1.36	-6.69	290.07	23.53
850	1461.91	-0.66	-11.23	276.24	25.72
700	2999.35	-6.12	-20.32	267.16	38.50
500	5563.69	-20.84	-34.79	266.96	60.13
300	9149.85	-45.66	-57.60	266.08	88.82
200	11773.34	-55.69	-72.95	268.71	94.18
100	16151.64	-61.40	-82.48	267.96	61.51
10	30645.00	-48.28	-77.39	266.40	39.59

March

00Z

Pressure Level (mb)	Average Height (m)	Average Temperature (°C)	Average Dewpoint (°C)	Average Wind Direction	Average Wind Speed (kts)
925	782.98	5.49	-3.06	275.82	22.22
850	1470.52	2.43	-8.34	277.77	25.39
700	3021.29	-4.48	-18.87	277.97	33.84
500	5598.31	-19.76	-35.35	275.20	50.20
300	9194.89	-45.33	-57.43	271.90	75.42
200	11818.48	-56.66	-72.71	272.70	81.39
100	16192.51	-60.85	-81.79	274.57	49.55
10	30780.36	-46.35	-78.77	276.84	34.47

12Z

Pressure Level (mb)	Average Height (m)	Average Temperature (°C)	Average Dewpoint (°C)	Average Wind Direction	Average Wind Speed (kts)
925	784.06	4.05	-4.45	295.39	23.00
850	1469.34	1.63	-8.50	281.39	24.17
700	3017.11	-4.80	-18.84	273.07	33.75
500	5591.44	-20.06	-34.31	271.87	50.21
300	9184.25	-45.53	-57.68	271.26	74.95
200	11806.52	-56.40	-72.81	272.87	79.60
100	16188.33	-60.32	-81.72	271.41	49.68
10	30780.44	-45.65	-74.76	267.40	34.03

April

00Z

Pressure Level (mb)	Average Height (m)	Average Temperature (°C)	Average Dewpoint (°C)	Average Wind Direction	Average Wind Speed (kts)
925	779.36	10.78	1.56	260.48	21.20
850	1479.43	6.65	-3.30	273.21	23.99
700	3051.00	-1.47	-15.62	279.65	30.52
500	5654.03	-17.45	-33.63	276.00	42.03
300	9282.93	-43.58	-56.35	273.67	61.74
200	11913.41	-57.50	-72.42	273.04	67.77
100	16270.83	-60.57	-81.66	276.40	37.50
10	30990.15	-43.79	-78.44	279.19	25.26

12Z

Pressure Level (mb)	Average Height (m)	Average Temperature (°C)	Average Dewpoint (°C)	Average Wind Direction	Average Wind Speed (kts)
925	786.50	9.80	0.67	284.62	22.33
850	1482.92	5.93	-4.02	281.10	22.21
700	3050.94	-1.90	-15.77	272.84	29.88
500	5651.31	-17.57	-33.59	270.98	42.96
300	9278.45	-43.72	-56.79	271.63	62.34
200	11908.92	-57.42	-73.26	275.50	66.26
100	16267.21	-60.28	-82.50	272.91	38.00
10	30996.70	-43.03	-75.61	264.13	23.96

May**00Z**

Pressure Level (mb)	Average Height (m)	Average Temperature (°C)	Average Dewpoint (°C)	Average Wind Direction	Average Wind Speed (kts)
925	796.37	14.85	7.42	261.52	17.80
850	1508.46	10.68	2.66	276.48	19.31
700	3101.96	2.03	-11.02	280.58	24.49
500	5742.46	-13.56	-29.90	276.91	34.25
300	9429.85	-40.24	-53.01	272.83	50.66
200	12083.28	-57.83	-70.33	273.94	56.62
100	16400.95	-61.81	-81.39	282.04	27.02
10	31219.92	-40.60	-76.32	006.33	13.88

12Z

Pressure Level (mb)	Average Height (m)	Average Temperature (°C)	Average Dewpoint (°C)	Average Wind Direction	Average Wind Speed (kts)
925	801.48	14.04	6.38	288.69	17.76
850	1511.98	10.06	2.08	277.87	17.98
700	3102.96	1.63	-11.04	274.61	24.43
500	5740.45	-13.71	-30.85	273.33	34.12
300	9424.88	-40.52	-54.06	274.32	49.34
200	12075.37	-57.97	-71.23	280.11	55.79
100	16391.86	-61.70	-82.34	280.77	26.98
10	31237.48	-40.01	-74.21	111.65	13.73

June

00Z

Pressure Level (mb)	Average Height (m)	Average Temperature (°C)	Average Dewpoint (°C)	Average Wind Direction	Average Wind Speed (kts)
925	804.53	19.09	12.64	250.29	14.82
850	1527.36	14.60	6.93	279.85	15.98
700	3144.89	6.01	-7.63	286.27	19.24
500	5825.28	-9.37	-26.91	282.26	26.71
300	9578.76	-35.83	-49.66	276.02	41.05
200	12274.52	-55.75	-67.77	275.27	49.55
100	16561.62	-63.79	-81.90	294.33	20.23
10	31446.40	-38.74	-76.26	085.62	23.51

12Z

Pressure Level (mb)	Average Height (m)	Average Temperature (°C)	Average Dewpoint (°C)	Average Wind Direction	Average Wind Speed (kts)
925	807.24	18.49	11.77	287.29	14.90
850	1529.10	14.02	7.21	279.88	15.46
700	3143.05	5.44	-7.14	272.54	20.69
500	5819.69	-9.70	-27.34	271.13	26.79
300	9569.48	-36.12	-50.80	274.22	38.88
200	12261.47	-55.98	-69.19	280.26	47.57
100	16547.84	-63.90	-83.35	290.05	20.60
10	31448.04	-38.60	-74.49	092.49	24.82

July

00Z

Pressure Level (mb)	Average Height (m)	Average Temperature (°C)	Average Dewpoint (°C)	Average Wind Direction	Average Wind Speed (kts)
925	814.20	21.36	15.37	244.51	13.56
850	1545.26	16.66	10.06	274.05	14.22
700	3174.95	7.78	-4.13	279.27	16.86
500	5873.59	-7.47	-24.16	280.01	23.34
300	9660.45	-33.42	-48.16	272.97	37.37
200	12381.57	-54.11	-66.31	274.68	44.86
100	16656.82	-64.68	-81.36	293.26	15.86
10	31579.56	-39.05	-75.27	084.94	36.17

12Z

Pressure Level (mb)	Average Height (m)	Average Temperature (°C)	Average Dewpoint (°C)	Average Wind Direction	Average Wind Speed (kts)
925	816.29	20.78	14.68	283.73	13.10
850	1547.03	16.03	10.39	274.87	13.71
700	3172.91	7.19	-3.97	270.42	18.89
500	5867.36	-7.77	-25.27	265.93	23.52
300	9649.73	-33.78	-49.18	268.51	33.57
200	12365.65	-54.32	-68.20	278.70	41.25
100	16641.06	-64.76	-82.70	288.48	16.15
10	31565.75	-39.02	-74.04	091.53	37.82

August**00Z**

Pressure Level (mb)	Average Height (m)	Average Temperature (°C)	Average Dewpoint (°C)	Average Wind Direction	Average Wind Speed (kts)
925	818.87	20.42	15.00	248.74	12.67
850	1546.41	15.98	9.27	280.78	13.63
700	3172.80	7.51	-5.41	277.19	15.88
500	5870.23	-7.56	-25.96	275.34	22.23
300	9653.41	-33.72	-47.88	268.32	38.08
200	12362.56	-53.99	-66.94	267.41	46.93
100	16643.44	-64.86	-81.52	278.45	16.40
10	31516.74	-41.19	-75.80	083.47	30.43

12Z

Pressure Level (mb)	Average Height (m)	Average Temperature (°C)	Average Dewpoint (°C)	Average Wind Direction	Average Wind Speed (kts)
925	823.00	19.80	13.96	300.60	12.54
850	1549.31	15.32	9.02	282.85	12.82
700	3172.01	6.91	-5.86	272.27	17.24
500	5865.62	-7.84	-26.67	266.00	22.81
300	9643.81	-34.12	-49.78	264.97	35.65
200	12357.81	-54.05	-68.68	272.06	43.97
100	16641.48	-64.81	-83.00	278.42	17.04
10	31527.50	-40.56	-75.48	090.79	30.47

September

00Z

Pressure Level (mb)	Average Height (m)	Average Temperature (°C)	Average Dewpoint (°C)	Average Wind Direction	Average Wind Speed (kts)
925	819.70	17.64	12.23	287.88	14.84
850	1542.32	13.79	4.94	286.01	14.79
700	3159.08	6.37	-8.75	274.29	17.76
500	5844.80	-8.83	-27.90	269.44	25.19
300	9605.41	-35.25	-49.01	260.66	41.25
200	12306.88	-54.70	-67.88	259.57	50.96
100	16577.07	-66.32	-82.41	268.23	22.56
10	31318.92	-43.74	-76.56	060.55	14.75

12Z

Pressure Level (mb)	Average Height (m)	Average Temperature (°C)	Average Dewpoint (°C)	Average Wind Direction	Average Wind Speed (kts)
925	822.78	16.96	11.58	353.44	15.50
850	1543.32	13.14	4.74	284.28	14.89
700	3156.86	5.91	-9.13	266.67	19.21
500	5837.98	-9.17	-28.71	261.12	26.30
300	9594.67	-35.66	-50.83	259.23	40.73
200	12295.15	-54.61	-69.90	262.83	49.48
100	16572.65	-66.07	-84.05	267.28	22.43
10	31332.62	-43.57	-76.73	094.43	13.86

October

00Z

Pressure Level (mb)	Average Height (m)	Average Temperature (°C)	Average Dewpoint (°C)	Average Wind Direction	Average Wind Speed (kts)
925	810.72	12.85	5.55	279.37	17.87
850	1521.76	9.61	-1.78	280.53	18.45
700	3115.07	2.89	-14.01	272.74	23.99
500	5766.12	-12.22	-31.58	266.09	36.69
300	9473.77	-38.61	-52.94	262.83	56.01
200	12151.22	-55.33	-70.44	264.30	65.67
100	16436.10	-66.20	-83.00	266.18	35.78
10	31044.80	-47.53	-79.56	273.33	28.63

12Z

Pressure Level (mb)	Average Height (m)	Average Temperature (°C)	Average Dewpoint (°C)	Average Wind Direction	Average Wind Speed (kts)
925	812.41	11.87	4.81	303.61	17.92
850	1522.10	8.87	-2.05	278.03	17.97
700	3112.03	2.40	-13.84	268.01	25.29
500	5759.62	-12.60	-32.11	264.82	36.53
300	9463.13	-38.82	-53.75	263.84	56.50
200	12139.27	-55.42	-71.81	266.57	65.89
100	16428.07	-65.90	-83.97	266.90	35.70
10	31050.85	-47.12	-77.51	268.16	28.36

November**00Z**

Pressure Level (mb)	Average Height (m)	Average Temperature (°C)	Average Dewpoint (°C)	Average Wind Direction	Average Wind Speed (kts)
925	810.87	7.95	-0.93	276.98	20.92
850	1507.17	5.48	-6.94	275.39	22.50
700	3078.07	-0.53	-17.58	269.66	31.42
500	5696.63	-15.57	-32.61	265.37	47.73
300	9355.49	-41.56	-53.88	264.14	71.09
200	12004.37	-56.90	-71.78	266.21	79.18
100	16303.12	-65.01	-82.64	267.67	47.11
10	30761.80	-51.42	-81.92	269.92	48.39

12Z

Pressure Level (mb)	Average Height (m)	Average Temperature (°C)	Average Dewpoint (°C)	Average Wind Direction	Average Wind Speed (kts)
925	809.58	6.64	-2.00	296.33	20.64
850	1502.10	4.67	-7.26	273.42	22.25
700	3069.37	-1.18	-17.82	265.22	31.73
500	5681.79	-16.08	-32.82	264.90	48.38
300	9334.84	-41.92	-55.02	264.86	70.29
200	11981.96	-56.66	-72.94	267.57	78.33
100	16287.57	-64.60	-83.46	266.48	46.46
10	30752.48	-50.58	-79.34	266.96	47.63

December

00Z

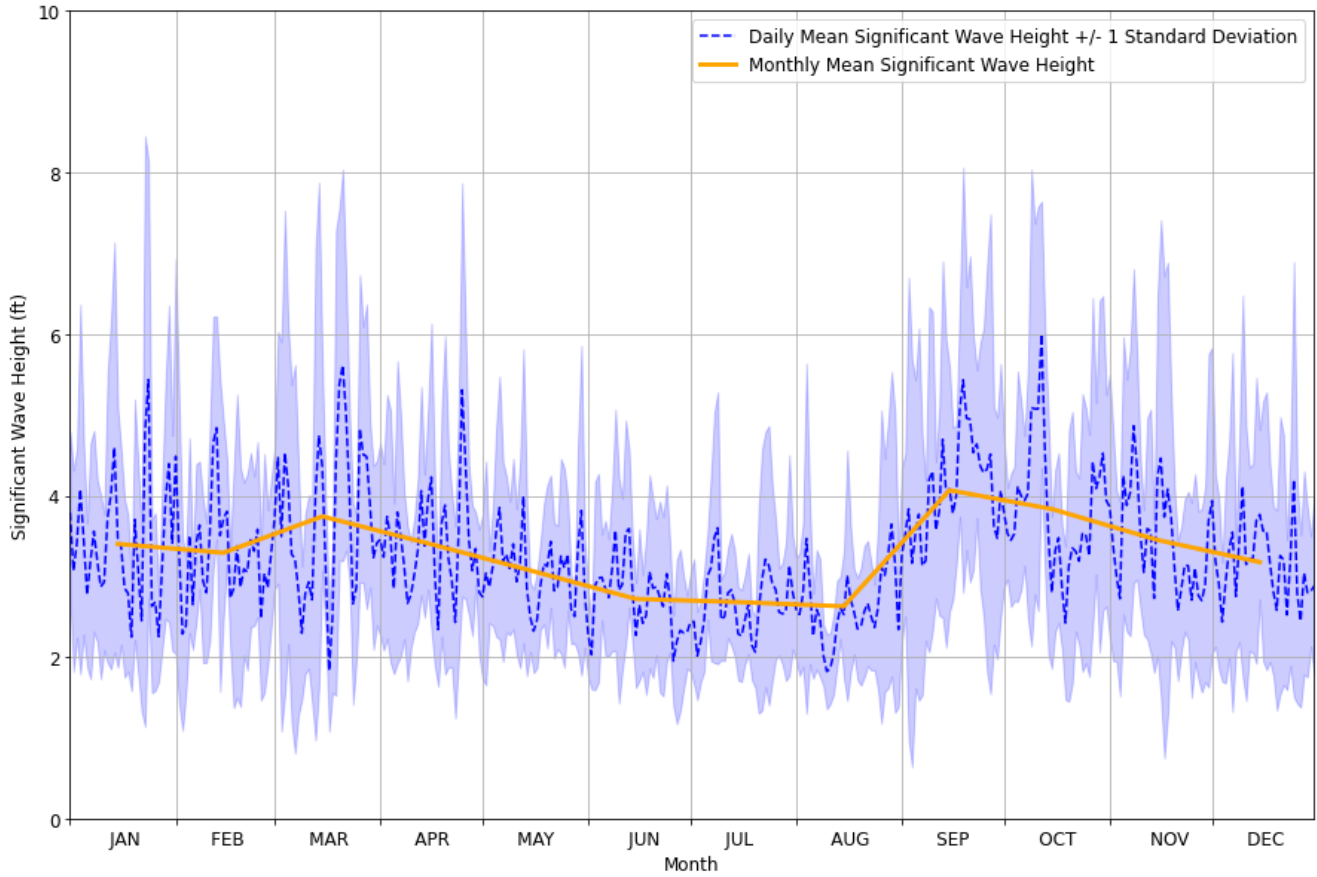
Pressure Level (mb)	Average Height (m)	Average Temperature (°C)	Average Dewpoint (°C)	Average Wind Direction	Average Wind Speed (kts)
925	794.23	4.18	-4.42	274.16	22.72
850	1482.86	1.84	-10.06	273.09	25.98
700	3034.46	-3.62	-19.33	267.82	37.57
500	5625.11	-18.21	-33.50	265.06	58.63
300	9251.99	-43.23	-54.60	264.76	87.32
200	11891.86	-56.65	-72.05	266.43	95.12
100	16216.39	-63.55	-82.40	267.68	59.30
10	30560.27	-52.64	-82.32	268.29	57.46

12Z

Pressure Level (mb)	Average Height (m)	Average Temperature (°C)	Average Dewpoint (°C)	Average Wind Direction	Average Wind Speed (kts)
925	793.95	3.55	-4.99	280.99	22.50
850	1480.52	1.45	-9.70	270.25	25.32
700	3030.69	-3.89	-18.76	264.41	38.07
500	5618.60	-18.50	-33.07	264.30	58.54
300	9240.61	-43.48	-55.24	264.97	85.86
200	11877.92	-56.81	-72.44	267.14	93.98
100	16201.93	-63.49	-82.84	266.72	58.98
10	30614.21	-51.22	-78.05	266.43	55.56

Sea State Data

SOURCE: BUOY STATION 44089 – Wallops Island, VA (2016-2021).



*** No Data for the following: (01/01/2016-06/26/2016) , (01/14/2020-07/15/2020) , (03/10/2021-03/16/2021)