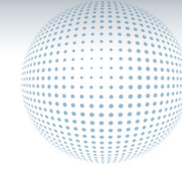
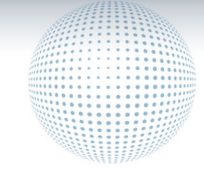




Transforming Challenge into Success



Schedule Integration

ASIT – Integrating Artemis Schedules



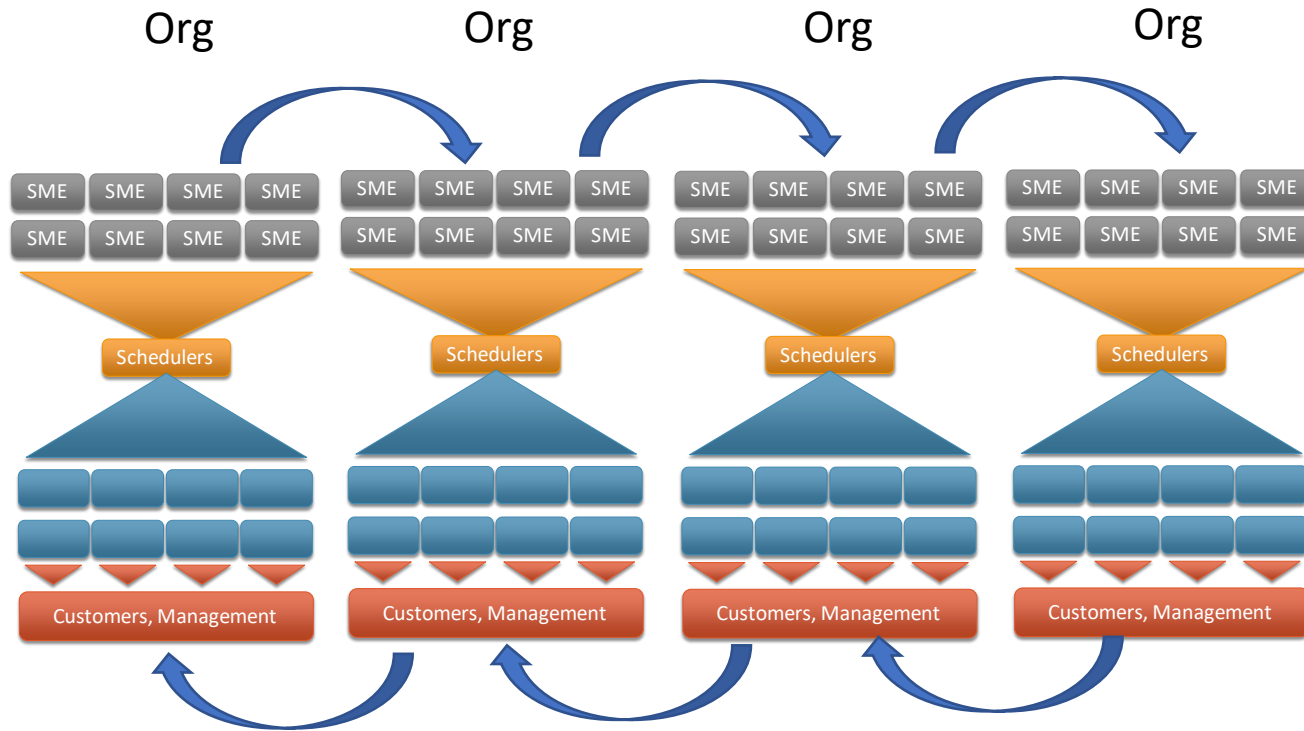
Transforming Challenge into Success



But I already have an IMS...

- Although a great deal of effort goes into the development of detailed requirements and configuration control of the hardware and software end items, not so much goes into the development, configuration management, control of clear integrated schedules.
- Integrated Master Schedules are ubiquitous
 - Everybody has one!
- IMS is generally about the build of an end item/s
- Schedule integration in large projects often suffers from
 - Poorly understood interdependencies between groups
 - Loose or no control over implementation level schedules (team work to perform)
 - Lack of illustrated products for teams
 - Lack of a common share location for those products
 - Frequent confusion over top level milestones and the lack of accompanying meta data, criteria and assumptions.

Characteristics of Typical Scheduling



- Typical scheduling focuses on production articles
- Constrained, missing things
- At best SMEs discuss schedule data in technical forums, management sees inconsistencies in products
- Supplier “Integrated” schedules often omit all the program work/matrixed work, boards, action items, etc. (they don’t know it)
- Schedulers and associated data is siloed within specific groups/programs no access to other organizational data
- More SMEs/data than schedulers
- SMEs not “enabled” with uniform capability
- Log jam - lost participation, and delays/lag
- Parallel communication paths “evolve” around jam
- No way to keep meta data (milestone “baggage”)

- Cross Org or Multi-Manifest/Mission work is hard to coordinate or see



Transforming Challenge into Success



Integrated Scheduling Concept

- Integrated (Collaborative) Scheduling empowers organizations and teams to share key milestone data and use that data for "down and in" as well as "up and out" products
 - Team Schedulers, Leads, Suppliers and Subject Matter Experts can all be involved in providing data for schedule products
 - Bottlenecks are eliminated
 - Program personnel in all areas can use the same data set
 - Data is curated by the responsible organization assigned
- Integrated Scheduling is scalable
- And we have a platform for it...



Transforming Challenge into Success



Integrated Scheduling Platform Goals

- Allow individuals and teams to
 - Get latest data from authoritative source
 - Easily build schedule-based products they need using their driving dates
 - Collaborate on schedule products using peer data
 - Access and integrate data from multiple sources
 - Provide curated milestone data to customers without meetings containing unusable data (pictures)
 - contribute to and reference a shared catalog/library
 - Establish a standard for showing, linking and sharing data
- Allow schedulers to
 - Produce easy to understand output (team and mgmt. level) with consistent data
 - Reduce “hunting” of people and source information
 - Publish official schedule views for general purpose use
 - Drive outputs with the same data set and automate updates (all official products in sync)



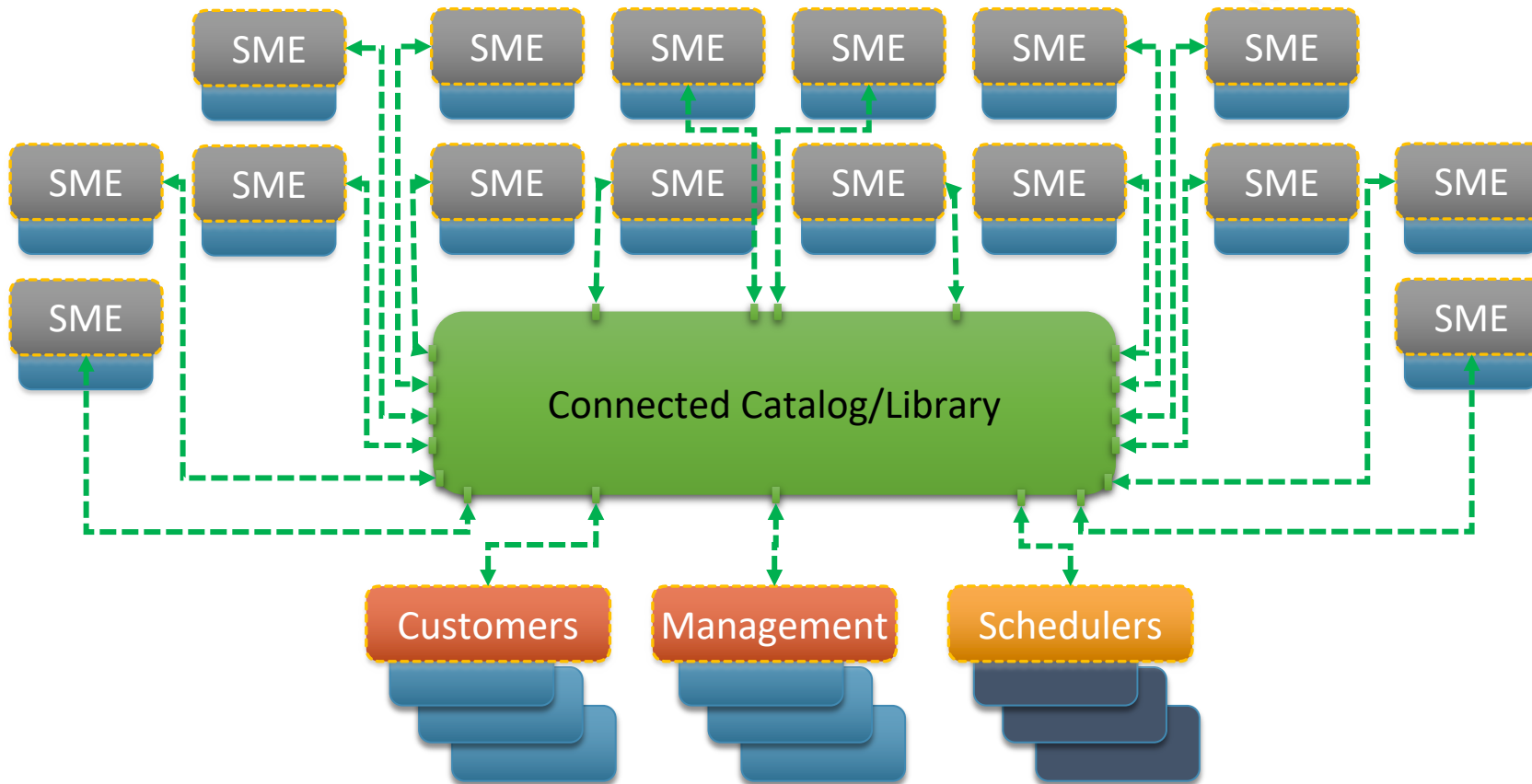
Transforming Challenge into Success



Integrated Scheduling Platform Goals

- Allow SMEs to
 - Contribute to the team/organization data set (make sure customers get the right info)
 - Reducing data calls
 - Build custom views/products for themselves or their teams
- Provide a standard format for sharing items outside of PM software
- Allow data groups to organize data
- Allow access control to the data groups by the data owners (Group Leads)
- Include Meta data as part of the information set (not just dates)
 - Dates have “baggage”
- Provide an Application Programming Interface (API) that other tools can use to access schedule data
 - Such as CDM systems (document and data management)
 - Boards and Panels
 - Action item systems, others...
- Provide generalized accessibility
 - Multiple tools to access system without additional licenses
 - Excel schedule tool, Excel Add-In, MS Project Add-In, MS PowerPoint

Scalable Integrated Scheduling Concept

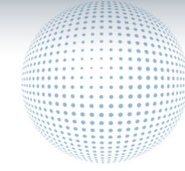


- SMEs can contribute directly (curation)
- Shared data using the same data set
- SMEs, Customers etc. pick what they need
- Schedulers can focus on specialized products
- Accessible
 - Low impact toolset
 - Very little training required – Tool basics are easy to learn (many current users have had NO specialized training on ASIT)
 - Training available

SME – in this context means Subject Matter Expert OR Authoritative Source

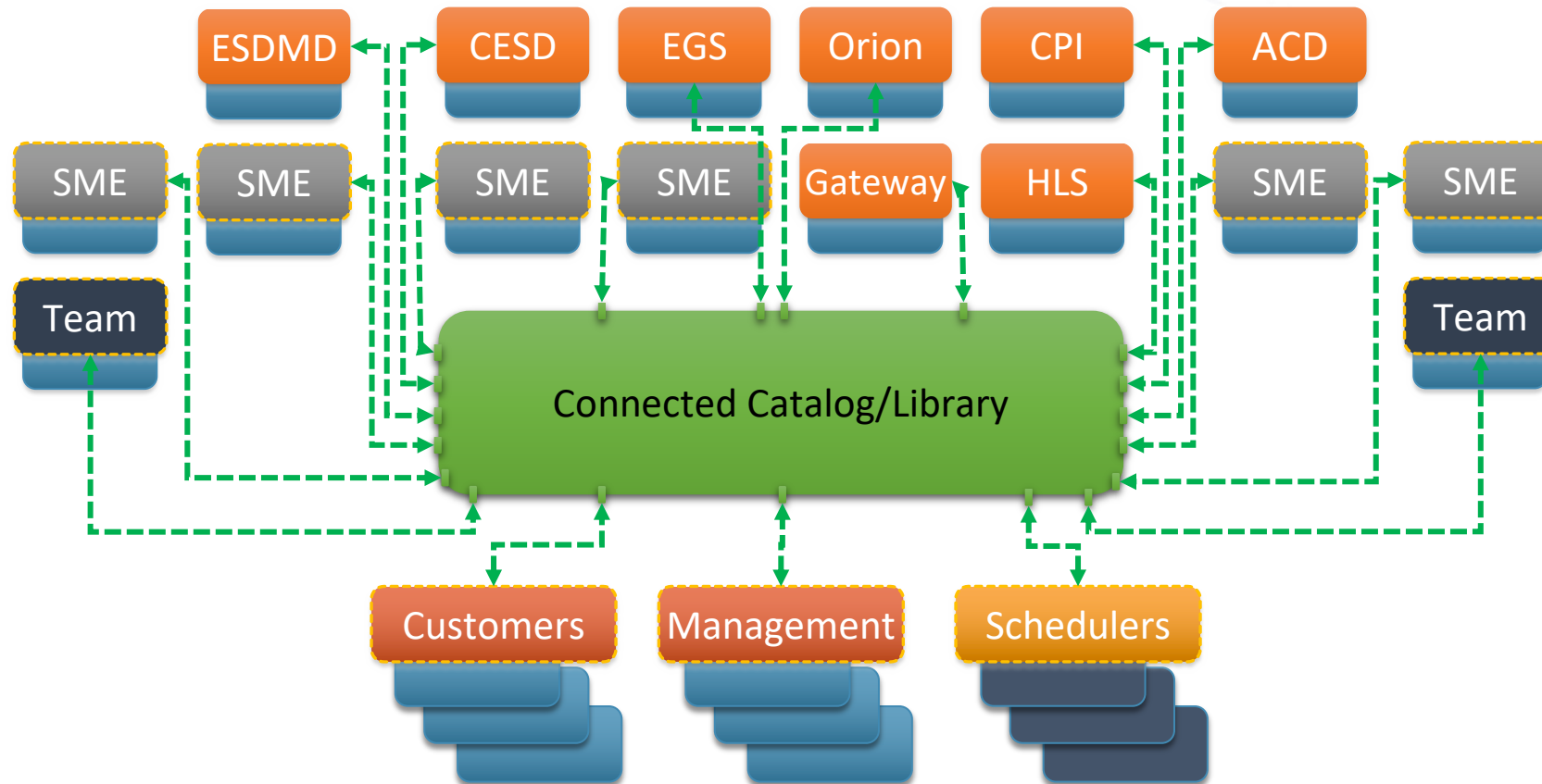


Transforming Challenge into Success



How would this work for Artemis?

Artemis Integration Concept

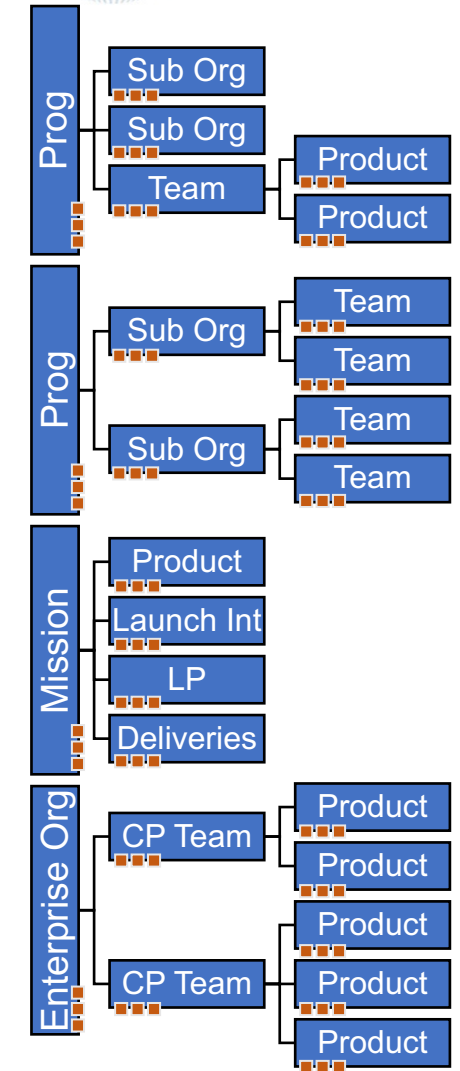


- All Major organizations become part of the contributor pool
- Organizations co-exist with teams and SMEs
- Catalog system (next chart)

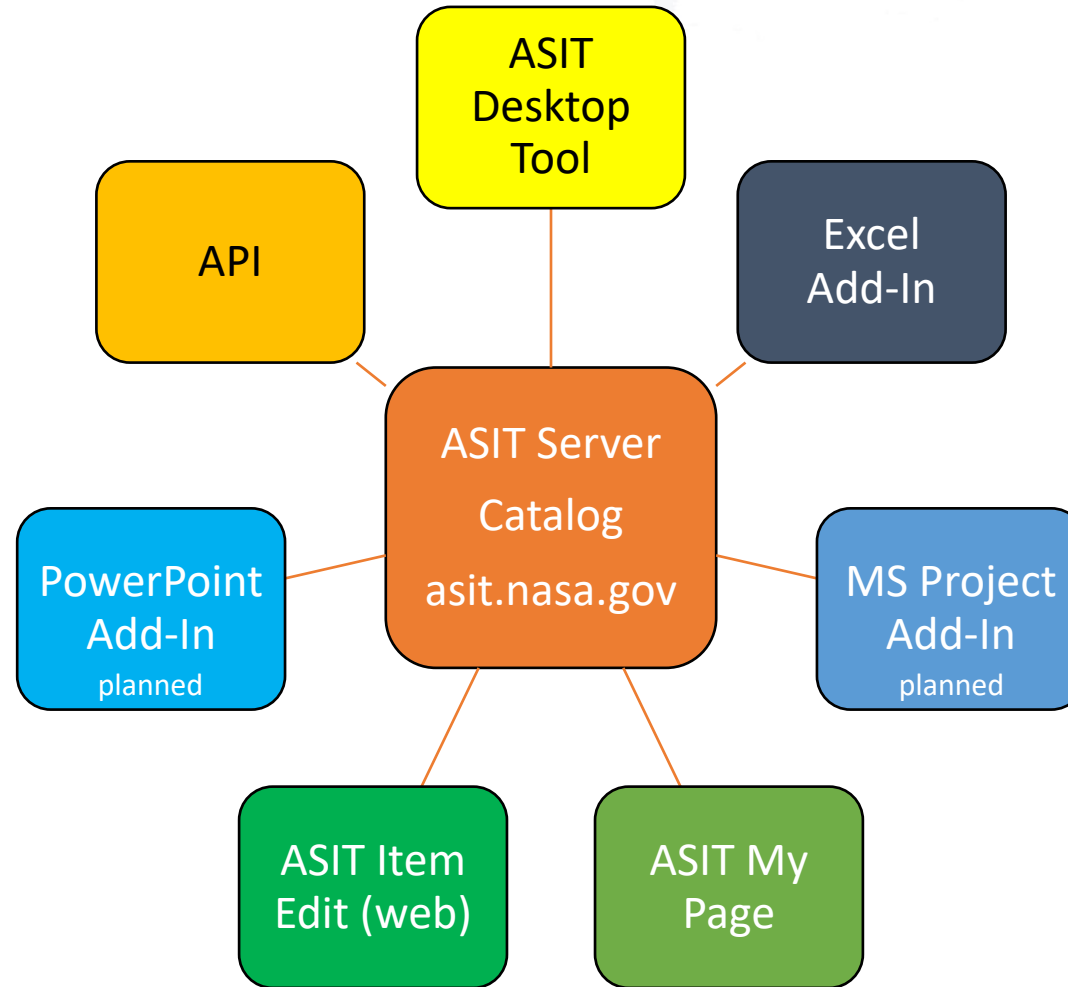
Artemis Catalog System

Example Artemis Catalog

- Data groups can be created to represent
 - Organizations or teams
 - Products (data from a specific product, management memo, delivery, or IMS)
 - Construct – such as Mission, Launch Period, Manifest Revision (sub groups/data matrixed based on assignment)
- Meta data tied to milestone each item
 - SMEs can clearly state pedigree for items or assumptions/authority
 - Official dates, work to dates, scenario, assumptions, or document sources
- Catalog uses a data group system and permissions/roles for each group
 - Items are filed in data groups and given an ID based on their data group
 - Data groups are managed by authorized individuals with permissions/roles
 - Reading from and writing to data groups is controlled by the organization that managed the group (from local collaboration to open)



ASIT Platform





Transforming Challenge into Success



ASIT Platform Components

✦ asit.nasa.gov

- ◆ Web pages for scheduling tool set and data catalog
 - View orgs, data, management of permissions and roles
 - Tool information, downloads, help topics and training video links
- ◆ API for ASIT tools to connect to catalog (and other tools)

✦ ARES Schedule Integration Tool (Desktop tool)

- ◆ Content producing (presentation/visual products) – produce schedule graphics and infographics with dynamic content
- ◆ Data sharing (data producing, publishing/retrieving)
- ◆ Data integration (consolidating many sources)
- ◆ Interface for production and automation
- ◆ Analysis with Excel
- ◆ Alternative to using standalone manual drawing tools or PowerPoint

✦ Excel Add-in

- ◆ Publish or reference catalog milestones/task data from any Excel workbook

✦ MS Project Add-In (in work)

- ◆ Publish and reference catalog milestones/tasks from your MS Project files

✦ PowerPoint Add-In (in work)

- ◆ Pull catalog milestones/task data directly into PowerPoint

✦ ASIT web page (asit.nasa.gov)

- ◆ Each individual has a “My Page”
- ◆ Edit catalog milestones/tasks directly in the web interface

✦ Other tools and systems can connect via API

API – Application Programming Interface, allows tools to communicate and “do their magic”



Transforming Challenge into Success



Integrated Scheduling Benefits/Costs

- Benefits: Massive integration improvement has been demonstrated where used
 - Official (and unofficial) dates can be communicated
 - Need dates and drivers for teams/products can be communicated
 - Work to complete and derived tasks/milestones can be illustrated for teams and management
 - Teams know “where to go” for schedule information
 - Leads/SMEs have more situational awareness
 - Disconnects in work plans can be seen easily (teams can coordinate)
 - "Actual" vs "Goal/Official" schedules can be differentiated
 - Work load can be balanced – pileups can be seen and avoided
 - Teams and Program Management are more informed about the success of the plan
 - Planning updates are much easier to make and implement
 - Many connected methods to choose from (some without changing tools, just using an Add-In)
 - Much more efficient in the long run
 - No more dead end data entry – when you use a connected tool data is captured in a live system
- Costs
 - Need to use one of the several connection methods instead of standalone work
 - Similar to stepping up to use Teams for meetings and IM



Transforming Challenge into Success

How Do I Participate?

- Visit asit.nasa.gov
 - Tools info, help topics, links to NAMS request for server access
- Do some prep work
 - Meet with your teams
 - What products do you build? What would you LIKE to build but cant?
 - How do you share now (internal/external)? What would you share?
 - How would you organize/categorize your data ? (the data you own/define)
 - What information do you need for your schedule products and where do you get it?
 - Who provides it or who SHOULD provide it in your opinion?
 - Who would benefit from you making your data available in the catalog?
 - Assign a Group Lead
- Get access
- Get on our list
 - Sign up at asit.nasa.gov
 - Information about news and updates
 - Information about new Schedule Integration Forum
- Work with an Admin to set up your data groups



ASIT Web Page

- Tool information
 - Downloads page
 - Help pages
 - Video links (NASATube)
- News
- Revision information

ASIT Data Manager
V1.34, DB:1.21

ASIT Download Page

Download the latest version 2.8104

You must have MS Office 2016, Office 365 or higher. PowerPoint 2016 or higher is required to produce slide shows. Importing Microsoft Project files with the "Load MSP File" window requires Microsoft Project.

[Download ASIT version 2.8104 here. \(3.3MB\) \(Windows version\) Release date: 3/7/2022](#)

NOTE: Versions of ASIT prior to 2.81 will not connect to the ASIT server (asit.nasa.gov). Versions of OSBT will not connect to the ASIT server - please update to the current version of ASIT.

NOTE: If you are interested in downloading the Change Report Template (below) you must make sure that the import table you are using with your MS Project file has the "Unique ID" field as its first column. The From/To report builder requires this to determine what tasks have changed, been added or deleted.

[Download From/To Report Word Template](#)

Latest Changes in 2.8104

- Calendar view! - display your items in a familiar monthly grid with each row one week
- You can now lock label positions to specific locations relative to your bars and events using the new label panel
- Add specific day values to "wedge" labels in toches
- You can also send labels for specific items to "note stacks"
- Duration calculations can now be anchored on the finish date (start date floating)
- Use unique color combinations for each scale level heading
- Link your IDs to other data groups in the Define ID window. This allows you to publish items under multiple IDs
- Minor fixes and improvements in Build 4 (2.8104)

ASIT Data Manager
V1.35, DB:1.22 (mmiller2)

Orgs My Page Info Download Logout

ASIT Information

What is ASIT?

ASIT is NASA's new schedule integration platform.

On your desktop: Using the **desktop tool** you can create presentation quality schedule views, integrate schedule data together from a wide variety of data sources, and make automated products that react to your data. A host of **Office 365 Add-ins** allow you to get data to and from your products.

Online: The desktop tools connect to the NASA wide schedule catalog, allowing you to reference schedule data from other organizations and also publish your own for your customers to use. Users can also add and edit items in the schedule catalog directly on the ASIT web site.

[Where can I get help?](#) [What are Organizations/Data Groups?](#) [Signup for newsletters/Info](#) [Report a bug/issue](#)

Download the Latest

Download the latest version of the tool here and check out recent changes.

Last version: 2.8104 released: 3/7/2022

There were several new capabilities added in 2.81 including the exciting new **Calendar view**. A Build 4 version was released to address some minor bugs

[Downloads page >](#)

Help Resources

There are lots of help topics that you can view on the Help Topics page. Read through the topics to learn how to do basic tasks, learn about new methods of building your schedules or pick up a few tips and tricks.

[Help page >](#)

Training Videos

Check out the training videos below for a more visual approach to learning. The Quickstart videos are designed to get you up and running fast.

But be sure to check them all out as you will learn lots of tips, techniques, and options in each of them.

[Training Videos >](#)

Training videos

V2.8 New Features Walkthrough 2:28

Take a look at the new features in Version 2.8: The new items panel, Title items, Calendar view, creating custom colors, scale window updates and more...

Quickstart! 17:45

This video will get you started fast with ASIT. Learn how to build a basic schedule and the basics of the user interface.

The Date Select Window 4:28

Learn how to use the Date Select window to enter dates, times and durations.



ASIT Catalog

- Organizations/Data Group list
- Orgs are being set up now
- Exploration Integration and Science Directorate (EISD) is piloting integration
 - via EDI office (Exploration Development Integration)
- NAMS
 - Required for access to the sharing system
 - User
 - Group Lead
 - Admin
 - NOT required for access to data groups (group managed)

ASIT Data Manager
V1.34, DB:1.21 (mmiller2)

Orgs My Page Info Download Logout

Organizations

This view allows you to see all the organizations in the catalog. For more information about organizations and permissions, see Organization info

You may request permissions for an organization by clicking one of its request permission buttons. See Organization info for more information about permissions.

Organization List

Filter 33 visible 0 selected

by ID by Name by Prefix by Path by Group Lead by Parent by Items by Active by Deleted

ID	Name	Prefix	Path	Group Leads	Parent	Items	Active	Deleted	Request Permission
500	Exploration Ground Systems	EGS	EGS		0	0	0	0	This organization is not granting permissions at this time
400	Exploration Integration and Science Directorate	EISD	EISD	Mark Miller (JSC GP)	0	0	0	0	You have Read permission Request Read/Write
410	Exploration Development Integration	EDI	EISD.EDI	Mark Miller (JSC GP)	400	133	120	13	You have Read permission Request Read/Write
100	Exploration Systems Division	ESD	ESD	Mark Miller (JSC GP)	0	0	0	0	Request Read Request Read/Write
110	EMPT	EMPT	ESD.EMPT	Mark Miller (JSC GP), Richard Jedrey (JSC XM), Carlos Jimenez (JSC XM)	100	0	0	0	You have Read permission Request Read/Write
121	EMPT Artemis I	A1	ESD.EMPT.A1	Mark Miller (JSC GP), Richard Jedrey (JSC XM), Carlos Jimenez (JSC XM)	110	0	0	0	You have Read permission Request Read/Write
131	Launch Period 22	LP22	ESD.EMPT.A1.LP22	Mark Miller (JSC GP), Richard Jedrey (JSC XM), Carlos Jimenez (JSC XM)	121	4	4	0	Request Read Request Read/Write
132	Launch Period 23	LP23	ESD.EMPT.A1.LP23	Mark Miller (JSC GP), Richard Jedrey (JSC XM), Carlos Jimenez (JSC XM)	121	4	4	0	Request Read Request Read/Write
133	Launch Period 24	LP24	ESD.EMPT.A1.LP24	Mark Miller (JSC GP), Richard Jedrey (JSC XM), Carlos Jimenez (JSC XM)	121	4	4	0	Request Read Request Read/Write
122	EMPT Artemis II	A2	ESD.EMPT.A2	Mark Miller (JSC GP), Richard Jedrey (JSC XM), Carlos Jimenez (JSC XM)	110	0	0	0	Request Read Request Read/Write
134	Development	DEV	ESD.EMPT.A2.DEV	Mark Miller (JSC GP), Richard Jedrey (JSC XM), Carlos Jimenez (JSC XM)	122	2	2	0	Request Read Request Read/Write
135	Generic EMPT Products	PROD	ESD.EMPT.A2.PROD	Mark Miller (JSC GP), Richard Jedrey (JSC XM), Carlos Jimenez (JSC XM)	122	2	2	0	Request Read Request Read/Write
123	EMPT Artemis III	A3	ESD.EMPT.A3	Mark Miller (JSC GP), Richard Jedrey (JSC XM), Carlos Jimenez (JSC XM)	110	0	0	0	Request Read Request Read/Write
124	EMPT Artemis IV	A4	ESD.EMPT.A4	Mark Miller (JSC GP), Richard Jedrey (JSC XM), Carlos Jimenez (JSC XM)	110	0	0	0	Request Read Request Read/Write
125	EMPT Artemis V	A5	ESD.EMPT.A5	Mark Miller (JSC GP), Richard Jedrey (JSC XM), Carlos Jimenez (JSC XM)	110	0	0	0	Request Read Request Read/Write
101	Integrated Mission Activities and Products Schedule	IMAPS	ESD.IMAPS	Mark Miller (JSC GP)	100	0	0	0	Request Read Request Read/Write
102	Systems Engineering & Integration Schedule	SEI	ESD.SEI	Mark Miller (JSC GP)	100	0	0	0	Request Read Request Read/Write
10	Missions	MIS	MIS	Mark Miller (JSC GP)	0	0	0	0	You have Read permission Request Read/Write
11	Artemis I	A1	MIS.A1	Mark Miller (JSC GP)	10	42	42	0	You have Read permission Request Read/Write
12	Artemis II	A2	MIS.A2	Mark Miller (JSC GP)	10	26	26	0	You have Read permission Request Read/Write
13	Artemis III	A3	MIS.A3	Mark Miller (JSC GP)	10	0	0	0	You have Read permission Request Read/Write
14	Artemis IV	A4	MIS.A4	Mark Miller (JSC GP)	10	0	0	0	You have Read permission Request Read/Write
15	Artemis V	A5	MIS.A5	Mark Miller (JSC GP)	10	0	0	0	You have Read permission Request Read/Write
16	Artemis VI	A6	MIS.A6	Mark Miller (JSC GP)	10	0	0	0	You have Read permission Request Read/Write



ASIT Catalog

- Org View
- The data in each org/group can be seen on the Org View page

ASIT Data Manager
V1.34, DB:1.21 (mmiller2)

Orgs My Page Info Download Logout

Orgview

Orgs / **_Test Org**

_Test Org
(TEST), ID:1

Group Leads:
Mark Miller (JSC GP)

Description:
This data group was designed for testing. Use this group and its sub groups to practice publishing and referencing data in the ASIT desktop tool.

Product list:

Edit Organization

Edit Permissions

Sub Organization List

ID	Name	Prefix	Path	Parent	Items	Active	Deleted
2	_Test Reference Data	DATA	TEST.DATA	1	4	4	0
3	_Test Publish	PUB	TEST.PUB	1	1	1	0

Schedule Items

Filter 14 visible

by ID by Link to by Name by File name by Created by Updated by Deleted by Label by Start by Finish by Desc. by Validation

Pub ID	Link to	Mod By	Last Pub File Name	Created	Updated	Deleted	Label	Start	Finish	Description	Validation
TEST-001		Mark Miller	C:\Users\mmiller2\Documents\OSIT\ASIT V2_8 - B6 dist.xlsm	2021-10-12 15:46:44	2021-12-15 16:28:40	2022-02-18 16:47:28	Task 1	11/11/2020	11/20/2020		
TEST-01		Mark Miller	C:\Users\mmiller2\Documents\OSIT\ASIT V2_8 - B7 dist.xlsm	2021-11-04 19:50:53	2021-12-15 16:28:40		Task 1	11/11/2020	11/20/2020		
TEST-0100		Mark Miller	C:\Users\mmiller2\Documents\OSIT\ASIT V2_8 - B7 dist.xlsm	2021-11-04 19:50:53	2021-12-15 16:28:40	2022-02-18 16:47:28	Task 1	11/11/2020	11/20/2020		
TEST-0101		Mark Miller	C:\Users\mmiller2\Documents\OSIT\ASIT V2_8 - B7 dist.xlsm	2021-11-04 19:50:53	2021-12-15 16:28:40	2022-02-18 16:47:28	Task 2	11/22/2020	11/26/2020		
TEST-02		Mark Miller	C:\Users\mmiller2\Documents\OSIT\ASIT V2_8 - B7 dist.xlsm	2021-11-04 19:50:53	2021-12-15 16:28:40		Task 2	11/22/2020	11/26/2020		
TEST-03		Mark Miller	C:\Users\mmiller2\Documents\OSIT\ASIT V2_8 - B7 dist.xlsm	2021-11-04 19:50:53	2021-12-15 16:28:40		Task 3	11/26/2020	11/29/2020		
TEST-04		Mark Miller	C:\Users\mmiller2\Documents\OSIT\ASIT V2_8 - B7 dist.xlsm	2021-11-04 19:50:53	2021-12-15 16:28:40	2022-02-18 16:47:28	Task 4	12/2/2020	12/14/2020		
TEST-05		Mark Miller	C:\Users\mmiller2\Documents\OSIT\ASIT V2_8 - B7 dist.xlsm	2021-11-04 19:50:53	2021-12-15 16:28:40	2022-02-18 16:47:28	Task 5	12/15/2020	12/28/2020		
TEST-06		Mark Miller	C:\Users\mmiller2\Documents\OSIT\ASIT V2_8 - B7 dist.xlsm	2021-11-04 19:50:53	2021-12-15 16:28:40	2022-02-18 16:47:28	Task 6	12/29/2020	1/4/2021		
TEST-07		Mark Miller	C:\Users\mmiller2\Documents\OSIT\ASIT V2_81 - dist.xlsm	2021-11-04 19:50:53	2021-12-15 16:28:40	2022-02-18 16:47:28	Task 3	11/26/2020	11/29/2020		
TEST-10		Mark Miller	C:\Users\mmiller2\Documents\OSIT\ASIT V2_81 - dist.xlsm	2021-11-14 15:16:40	2021-12-15 16:28:40	2022-02-18 16:47:28					
TEST-102		Mark Miller	C:\Users\mmiller2\Documents\OSIT\ASIT V2_81 - dist.xlsm	2021-11-16 22:00:41	2021-12-15 16:28:40	2022-02-18 16:47:28	A	11/23/2020	11/23/2020		
TEST-11		Mike Ferrer	C:\Users\mferrer\Documents\ESI\1-Schedules\ASIT V2_81 - dist.xlsm	2021-11-16 19:57:13	2021-12-15 16:28:40	2022-02-18 16:47:28	Task 3	11/26/2020	11/29/2020		
TEST-12		Mike Ferrer	C:\Users\mferrer\Documents\ESI\1-Schedules\ASIT V2_81 - dist.xlsm	2021-11-16 20:13:14	2021-12-15 16:28:40	2022-02-18 16:47:28	Task 4	12/2/2020	12/14/2020		



My Page

- All users have a My Page
 - See roles/permissions
 - List of all visible items
 - Filter and sort
 - Info
 - If Group Lead, pending permission requests appear for approval

ASIT Data Manager
V1.34, DB:1.21 (mmiller2)

Orgs My Page Info Download Logout

My Page:
Mark Miller, mark.miller-2@nasa.gov

▼ About this page
This view allows you to see your permissions, roles and the schedule items that are viewable to you based on your permissions. If you have pending permission requests for any of the groups you manage, they will appear at the top of this page.

Requesting permissions: How do I request permissions?
About Data Groups and Organizations: What is an Organization/Data Group?
About Permissions: What are the permissions I can get?
Learn much more at the Help page

My Roles

My Permissions

Viewable Schedule Items

Filter 68 visible

mis by Org ID by Desc. by Label by Start by Finish by Link to by User by Created by Updated by Deleted by Validated

Pub ID	Org ID	Description	Label	Start	Finish	Link to	Last Mod By	Created	Updated	Deleted	Validated
MIS.A1-2.1.0001	11	Artemis I Launch Date	Artemis I	6/6/2022	6/6/2022	EISD.EDI-2.1.0001	Matthew Budde	2022-03-29 19:20:34	2022-03-29 19:20:34	Active	3/29/2022 1:32:25 PM
MIS.A1-2.1.0002	11	Launch Window for LP19	Launch Window (6/6-6/16)	6/6/2022	6/16/2022	EISD.EDI-2.1.0002	Matthew Budde	2022-03-29 19:20:34	2022-03-29 19:20:34	Active	3/29/2022 1:32:16 PM
MIS.A1-2.1.0003	11	Mission Integration Review (MIR). Nominally L-18 months.	MIR	6/27/2017	6/27/2017	EISD.EDI-2.1.0003	Matthew Budde	2022-03-29 19:20:34	2022-03-29 19:20:34	Active	3/29/2022 1:32:25 PM
MIS.A1-2.1.0004	11	Flight Operations Review (FOR) Data Package, for FOR Part 1	FOR Data Pkg 1	8/3/2020	8/3/2020	EISD.EDI-2.1.0004	Matthew Budde	2022-03-29 19:20:34	2022-03-29 19:20:34	Active	3/29/2022 1:32:25 PM
MIS.A1-2.1.0005	11	Flight Operations Review Part 1 (Orion in-space), ~L-10 months	FOR Part 1	9/21/2020	9/21/2020	EISD.EDI-2.1.0005	Matthew Budde	2022-03-29 19:20:34	2022-03-29 19:20:34	Active	3/29/2022 1:32:25 PM
MIS.A1-2.1.0006	11	Flight Operations Review (FOR) Data Package, for FOR Part 2	FOR Data Pkg 2	10/13/2020	10/13/2020	EISD.EDI-2.1.0006	Matthew Budde	2022-03-29 19:20:34	2022-03-29 19:20:34	Active	3/29/2022 1:32:25 PM
MIS.A1-2.1.0007	11	Flight Operations Review Part 2 (Ascent/Entry), ~L-8 months	FOR Part 2	12/7/2020	12/7/2020	EISD.EDI-2.1.0007	Matthew Budde	2022-03-29 19:20:34	2022-03-29 19:20:34	Active	3/29/2022 1:32:25 PM
MIS.A1-2.1.0008	11	FOD Operational Readiness Review, ~L-8 months	FOD ORR	12/15/2020	12/15/2020	EISD.EDI-2.1.0008	Matthew Budde	2022-03-29 19:20:34	2022-03-29 19:20:34	Active	3/29/2022 1:32:16 PM
MIS.A1-2.1.0009	11	FOD Operational Readiness Review (ORR), Part 2	FOD ORR Part 2	8/12/2021	8/12/2021	EISD.EDI-2.1.0009	Matthew Budde	2022-03-29 19:20:34	2022-03-29 19:20:34	Active	3/29/2022 1:32:25 PM
MIS.A1-2.1.0010	11	SLS Engineering Support Center (SESC) Operational Readiness Review (ORR)	SESC ORR	5/5/2021	5/5/2021	EISD.EDI-2.1.0010	Matthew Budde	2022-03-29 19:20:34	2022-03-29 19:20:34	Active	3/29/2022 1:32:25 PM
MIS.A1-2.1.0011	11	ESD Post Flight Assessment Review, ~6 months after splashdown	ESD PFAR	1/11/2023	1/11/2023	EISD.EDI-2.1.0011	Matthew Budde	2022-03-29 19:20:34	2022-03-29 19:20:34	Active	3/29/2022 1:32:25 PM
MIS.A1-2.1.0012	11	RF compatibility test between Orion and Near Earth Network (NEN) and Space Network (SN). ICAN test.	Orion-NEN&SN RF Compat (ICAN 52)	9/15/2018	9/15/2018	EISD.EDI-2.1.0012	Matthew Budde	2022-03-29 19:20:34	2022-03-29 19:20:34	Active	3/29/2022 1:32:25 PM
MIS.A1-2.1.0013	11	RF compatibility test between Orion and Deep Space Network (DSN). ICAN test.	Orion-DSN RF Compat (ICAN 51a)	9/24/2018	9/24/2018	EISD.EDI-2.1.0013	Matthew Budde	2022-03-29 19:20:34	2022-03-29 19:20:34	Active	3/29/2022 1:32:25 PM
MIS.A1-2.1.0014	11	2nd RF compatibility test between Orion and Deep Space Network (DSN). ICAN test.	Orion-DSN RF Compat (ICAN 51b)	10/9/2019	10/9/2019	EISD.EDI-2.1.0014	Matthew Budde	2022-03-29 19:20:34	2022-03-29 19:20:34	Active	3/29/2022 1:32:25 PM
MIS.A1-2.1.0015	11	Underway Recovery Test (URT) 8. Training run for Landing & Recovery Team (LRT).	URT 8 (Trng)	3/12/2020	3/12/2020	EISD.EDI-2.1.0015	Matthew Budde	2022-03-29 19:20:34	2022-03-29 19:20:34	Active	3/29/2022 1:32:25 PM
MIS.A1-2.1.0016	11	Underway Recovery Test (URT) 9. Final certification run for Landing & Recovery Team (LRT) for Artemis I.	URT 9 (LRT Cert)	11/2/2021	11/2/2021	EISD.EDI-2.1.0016	Matthew Budde	2022-03-29 19:20:34	2022-03-29 19:20:34	Active	3/29/2022 1:32:25 PM
MIS.A1-2.1.0017	11	Install Mass Simulator for Orion (MSO) in VAB.	MSO install	8/15/2021	8/15/2021	EISD.EDI-2.1.0017	Matthew Budde	2022-03-29 19:20:34	2022-03-29 19:20:34	Active	3/29/2022 1:32:25 PM
MIS.A1-2.1.0018	11	Orion transported from LASF to VAB.	Orion to VAB	10/19/2021	10/19/2021	EISD.EDI-2.1.0018	Matthew Budde	2022-03-29 19:20:34	2022-03-29 19:20:34	Active	3/29/2022 1:32:25 PM
MIS.A1-2.1.0019	11	Orion stacked on top of SLS in VAB.	Orion install	10/19/2021	10/19/2021	EISD.EDI-2.1.0019	Matthew Budde	2022-03-29 19:20:34	2022-03-29 19:20:34	Active	3/29/2022 1:32:25 PM

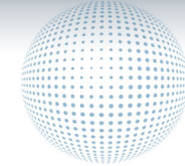


Transforming Challenge into Success



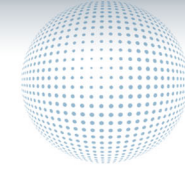
Contact Info

- Mark Miller
 - ASIT designer/developer/site admin
- ARES Corporation
- mark.miller-2@nasa.gov





Transforming Challenge into Success



Backup

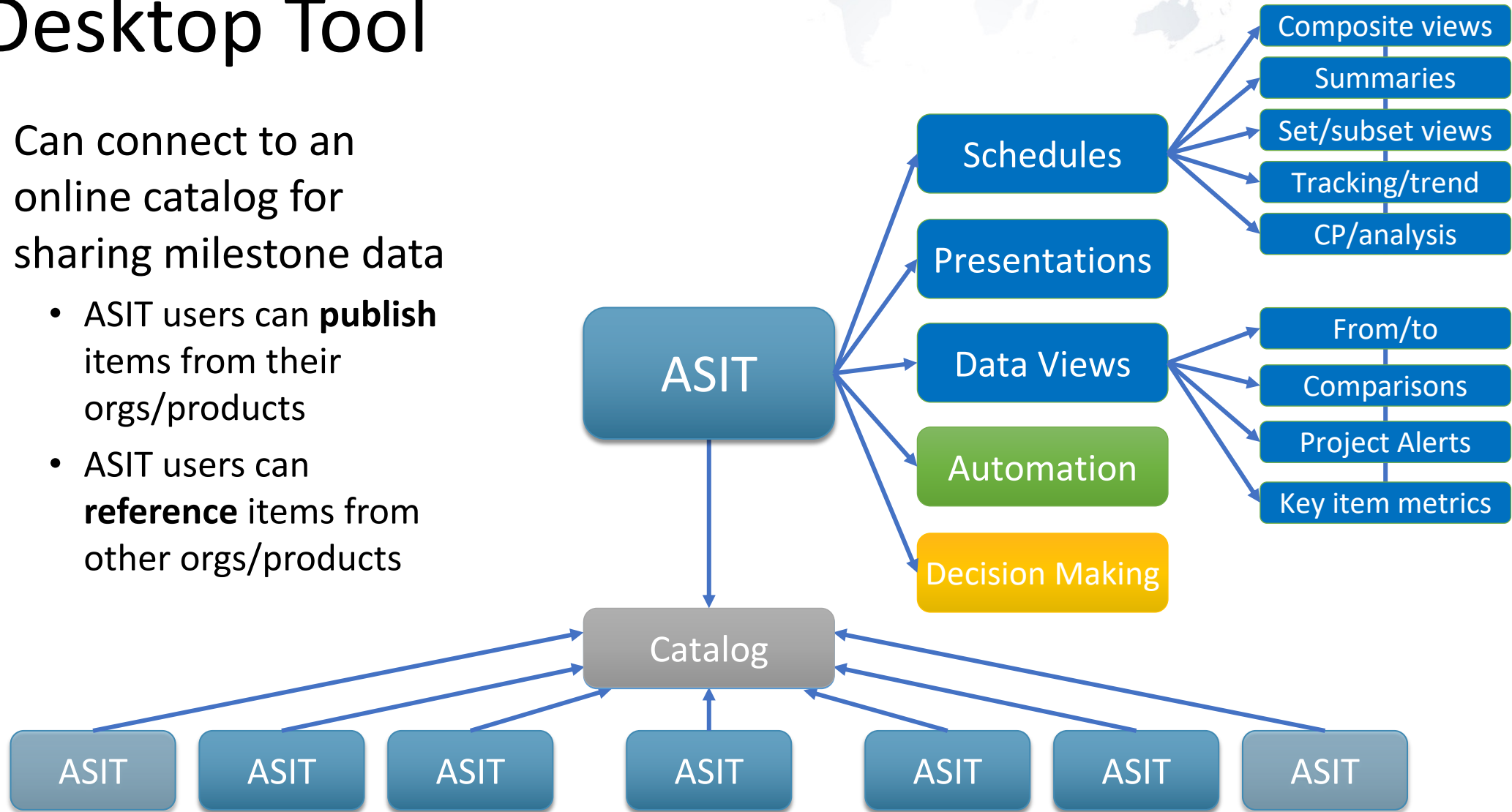


What Can I Do with the ASIT Desktop Tool?

- ASIT Desktop is the Swiss Army Knife tool for schedule information
 - You can build a simple schedule with information you enter in the tool
 - You can use existing schedule data sets to map graphics to it (when the data updates, so do the graphics)
 - You can combine data from lots of sources and use it all for plotting schedule information
 - You can build trend charts and other infographics where the visual information is driven by data
 - You can make dynamic content (using automated rule sets with If/Then logic) that reacts to your data
 - Notes or alerts and other items based on conditions
 - You can make derived (calculated or composite) data to drive content
 - You can make interactive schedule charts
 - Selectable views or levels of detail
 - You can use the power of Excel's functions to define rules, content, data that can be incorporated into schedules
 - You can build several views of the same schedule data for many audiences

ASIT (ARES Schedule Integration Tool) aka Desktop Tool

- Can connect to an online catalog for sharing milestone data
 - ASIT users can **publish** items from their orgs/products
 - ASIT users can **reference** items from other orgs/products



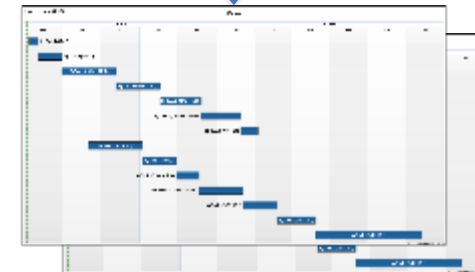
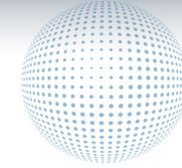


Transforming Challenge into Success



ASIT Use Case 1

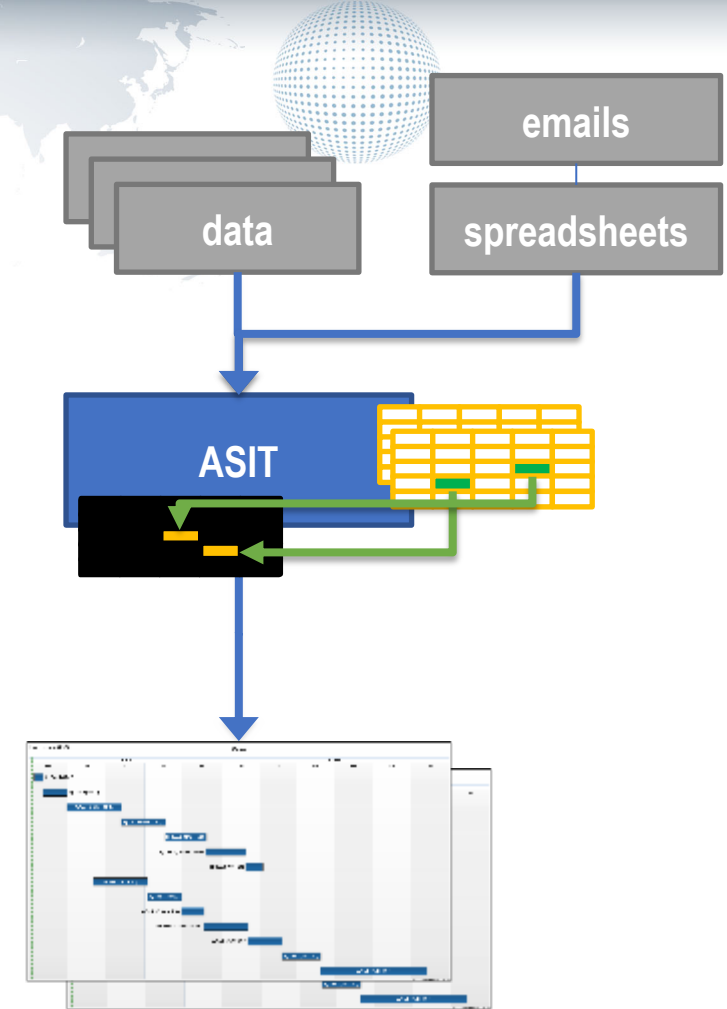
- Make a simple (or complex) schedule
- Type in data (or use the panels)
- Single page or Multi-page schedule set output
- Data is not connected to other users or to a catalog
- Examples :
 - Make a "Quick and dirty schedule"
 - I want my team to see the plan
 - I have to do a presentation
 - I want to visualize how much time it will take to ...
 - I want to see how much time we have to ...
 - I want to track my team's a, b, c...
 - I have several views of the same schedule data I need to produce
 - I need to analyze ... (use Excel's capabilities on a schedule)





ASIT Use Case 2

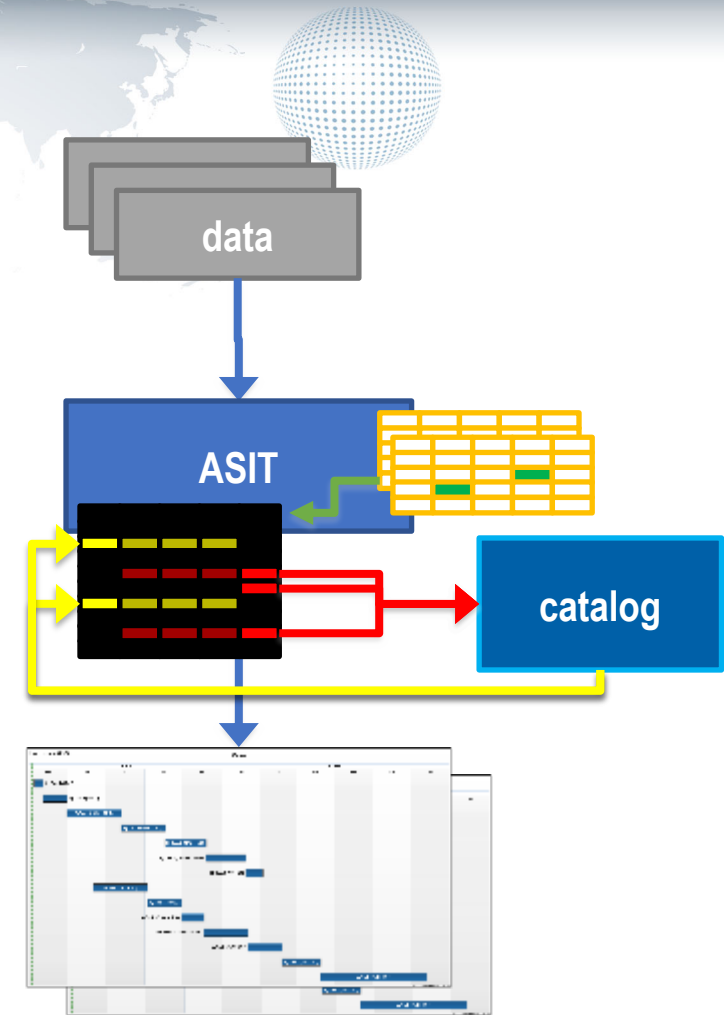
- Consolidate information from multiple sources
- Type in data, paste in data, link to internal worksheet tables, or other workbooks or import MS Project data with the importer tool
- Single page or Multi-page schedule set output
- Data is not connected to other users or to a catalog
- Examples :
 - I have all these data sources with different information
 - I need to put them together
 - I need to "compute" the dates I need to see based on ...
 - I need to see the differences
 - I need to add in my team's tasks
 - I want to see scenarios with different sets (at the same time)
 - I need to see what doesn't "fit"
 - I need to see the longest "poles" are
 - I want to track any of the above





ASIT Use Case 3

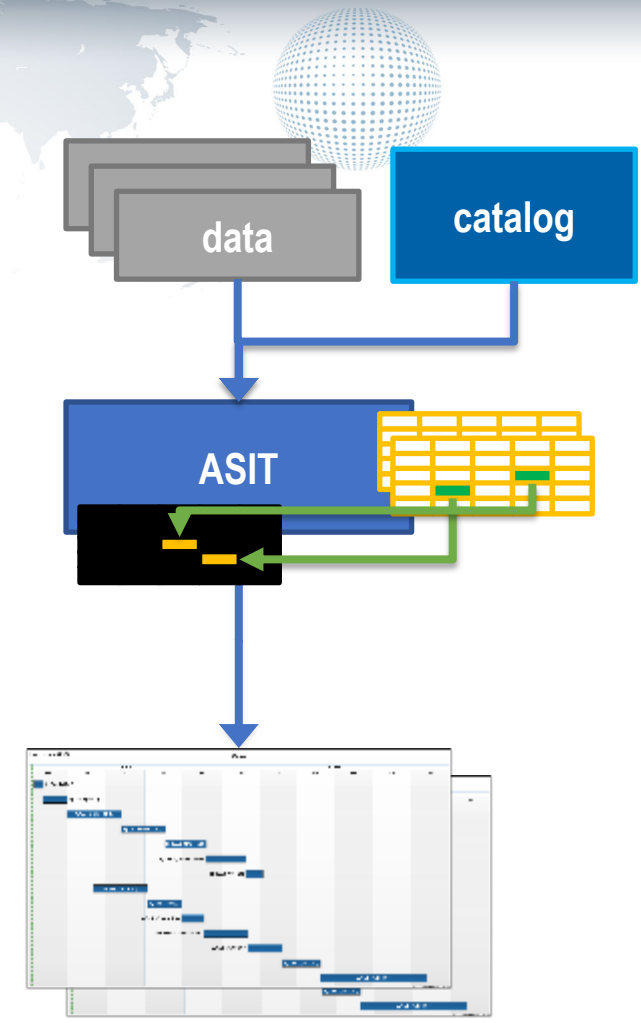
- Referencing from and publishing to a catalog
- Items can be defined in the workbook and set to publish to the catalog
- Items can be referenced from the catalog
- Single page or Multi-page schedule set output
- Others can see and use the milestones you publish in their own schedules
- You can see and use milestones published by others
- Examples:
 - I need to build a schedule based on other team's dates
 - I need to pull together all the dates in one view
 - I want people to use these dates for my items
 - I need to communicate my updates
 - I have been assigned milestone dates to manage for the group or program
 - I need to use other team's items but don't know the current dates
 - I don't know what these dates are based on
 - I need to know if team B has changed their date based on the recent direction
 - I need to be in sync with official dates from another group, project or program





ASIT Use Case 4

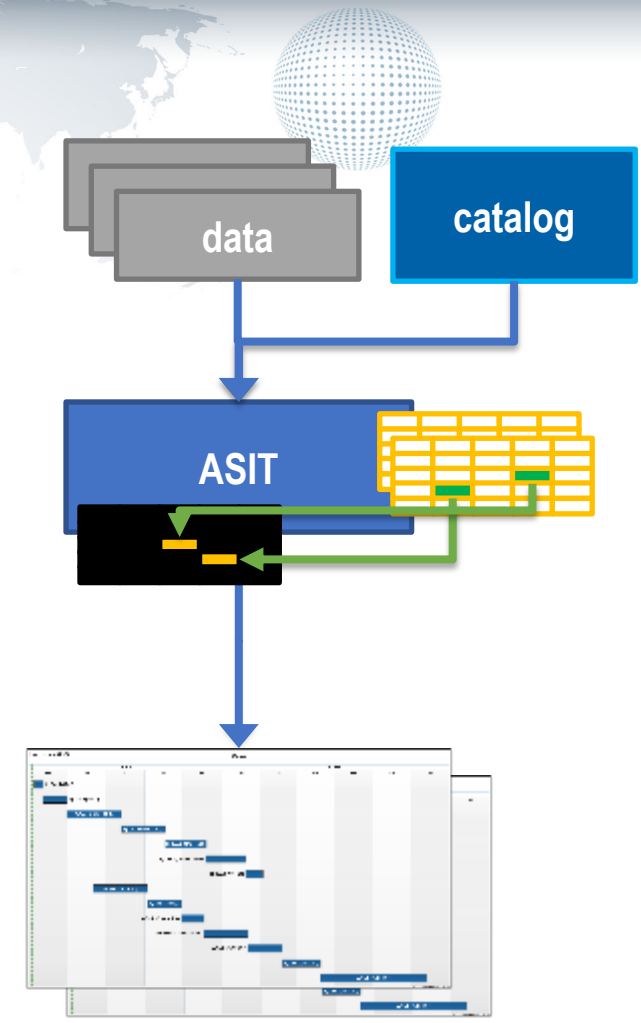
- Building a dynamic schedule info-graphic
- Apply logic and combine analytical data with multi-source data to create decision charts
- Data can be from connected catalog to other source
- Examples:
 - I want to show changes to my data
 - I want to apply IF/THEN logic to produce visual output or customizations
 - I want to see only what items are beyond a need date
 - I need to compute or single out trouble areas
 - Out of 100s of deliveries I only want to see the ones that meet a criteria
 - I have a highly customized output format I have to produce for a customer
 - I want to apply probability distributions to items for an SRA (or another analysis)





ASIT Excel Add-In

- Data can be referenced from the catalog into ANY Excel file
- Examples:
 - I want to drive some data set with start or complete dates
 - I want to use current dates to run a simulation
 - I want to see only what items are beyond a need date
 - I need to compute or single out trouble areas
 - Out of 100s of deliveries I only want to see the ones that meet a criteria
 - I have a highly customized output format I have to produce for a customer
 - I want to apply probability distributions to items for an SRA (or another analysis)





Transforming Challenge into Success

ASIT Current Users

- Current users of the tool. The following organizations are currently using the ASIT desktop tool to various degrees (penetration varies).
 - Orion*
 - Gateway
 - EGS
 - ESD*
 - HALO
 - AES
 - xEMU
 - LTV
- Directorates/Centers
 - FOD
 - JSC Engineering
 - MSFC
 - GRC
 - LaRC
- Others
 - ISS
 - Commercial Crew
 - Commercial LEO
 - Lockheed Martin
 - ESA – working with Orion/APS

In ESD the following teams use ASIT:

- IMAPS
- IMMS (PSI)
- SE&I Summary Schedule
- EVVT
- Milestone Review Team
- IAS ITT
- More...

* have existing data libraries or wiki sites.