



(b) (6), (b) (7)(C)

Director, Counterintelligence

(b) (6), (b) (7)(C)

TYPES OF ADVISORIES

Bulletin
Describes current developments or general trends regarding threats of terrorism.

Elevated Alert
Warns of a credible terrorism threat against the United States.

Imminent Alert
Warns of a credible, specific and impending terrorism threat against the United States.

Office of Protective Services

June 2016 DHS Bulletin In Effect

NASA CI/CT MONTHLY NEWS UPDATE – November 2016

This monthly newsletter is published to increase NASA personnel awareness of significant current issues related to counterintelligence, counterterrorism, and counterintelligence cyber matters. To learn more about CI/CT awareness, or to schedule a CI/CT presentation, please contact the CI POC located on the last page.

Significant Counterterrorism (CT) Issues:

E.U. BRACES FOR WAVE OF ISLAMIC STATE FIGHTERS AFTER MOSUL BATTLE

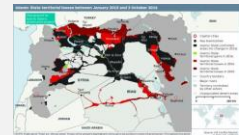


A long-awaited offensive to dislodge the Islamic State from its stronghold city of Mosul is fueling fears of renewed terrorist attacks, as European counterterrorism officials say more fighters are returning home after waging jihad in Syria and Iraq.

https://www.washingtonpost.com/world/europe/eu-authorities-brace-for-wave-ofislamic-statefightersafter-mosul-assault/2016/10/23/175c5ac8-960e-11e6-9cae-2a3574e296a6_story.html

ISIS SUFFERS MAJOR LAND LOSSES AHEAD OF PLANNED MOSUL ASSAULT

The U.S.-led coalition airstrikes and ground fighting have depleted the Islamic State’s territory in Iraq and Syria in a big way, reportedly by 16 percent over just 9 months, a new study has found.



<http://www.foxnews.com/world/2016/10/11/isis-suffers-major-land-loss-ahead-planned-mosul-assault-report-finds.html>

COUNTERTERRORISM POLICE MISHAPS LEAVES EUROPEANS WORRIED



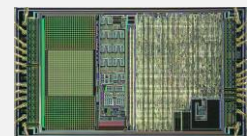
Which mishap by German authorities was worst? Was it that police officials monitored the Syrian suspect so poorly that neighbors noticed it? Or was it that he fled authorities while they followed him? Or lastly, the series of major mistakes by authorities ended in Al-Bakr's suicide in jail.

<https://www.washingtonpost.com/news/worldviews/wp/2016/10/13/a-series-of-counterterrorism-police-mishaps-leaves-europeans-worried/>

Significant Counterintelligence Issues:

THREE ARRESTED IN SCHEME TO EXPORT SENSITIVE U.S. TECH TO RUSSIA

A U.S. citizen and two Russian nationals were arrested recently on charges relating to the alleged illegal export of sensitive military technology from the United States to Russia, the Justice Department said.



<http://www.reuters.com/article/us-usa-russia-technology-idUSKCN126250?il=0>



THREE TURKS WITH MULTIPLE US MILITARY CONTRACTS ARRESTED ON ESPIONAGE CHARGES



Three Turks have been arrested recently in the United States on espionage charges, which include "funneling military secrets out of the country," after winning numerous military contracts with the Pentagon.

http://www.dailysabah.com/americas/2016/10/09/three-turks-who-won-multiple-us-military-contracts-arrested-on-espionage-charges?utm_source=360works%20cloudmail&utm_medium=email&utm_campaign=newswatch

CORPORATE THEFT STRIKES FORTUNE 500 OIL COMPANY IN HOUSTON

FBI agents said the man, who was captured on video inside the Houston offices of an unidentified Fortune 500 energy company, is believed to have left the offices with a backpack and shoulder bag stuffed full of company secrets.

<http://www.chron.com/news/houston-texas/article/FBI-seeks-public-s-help-in-suspected-corporate-9646492.php>



Analyst Notes – Items to Watch:

As the battle of Mosul begins, it is evident that ISIS will fight on in other areas as well as bringing terrorist attacks to the West. ISIS fighters have already been seen leaving the Middle East and have begun the process of making their way back to their home countries. The West will most likely suffer increased terrorist attacks from returning “jihadists” and ISIS sympathizers. Al-Qaeda (AQ) has benefitted directly from the assaults on ISIS and the group continues to “lay low,” strengthening its relationships with terrorist groups such as AQIM, AQAP and Jabhat Fateh Al-Sham. Russian espionage continues to target U.S. technology and other intelligence services continue to conduct espionage for their countries, or to sell on the open market. Although cyber espionage dominates current headlines, ordinary theft achieves the same ends by exploiting poor physical security practices. The NASA CI/CT division continues to monitor these threats and any others that have the potential to harm NASA or its equities.

NASA CI Offices:

- Ames Research Center: (b) (6), (b) (7)(C)
- Armstrong Flight Research Center: (b) (6), (b) (7)(C)
- Glenn Research Center: (b) (6), (b) (7)(C)
- Goddard Space Flight Center: (b) (6), (b) (7)(C)
- Jet Propulsion Laboratory: (b) (6), (b) (7)(C)
- Johnson Space Center: (b) (6), (b) (7)(C)
- Kennedy Space Center: (b) (6), (b) (7)(C)
- Langley Research Center: (b) (6), (b) (7)(C)
- Marshall Space Flight Center: (b) (6), (b) (7)(C)
- NASA Headquarters: (b) (6), (b) (7)(C)
- Stennis Space Center: (b) (6), (b) (7)(C)
- NASA Headquarters Cyber: (b) (6), (b) (7)(C)