

ILLUSTRATE NASA'S JOURNEY TO THE MOON

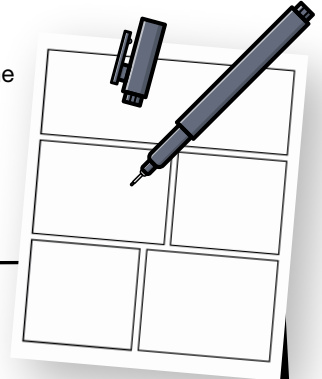
SCaN Comic Activity

National Aeronautics and
Space Administration



NASA is going to the Moon to learn how to eventually live on Mars! Through the Artemis missions, NASA will land the first woman and first person of color on the Moon. Along with their fellow astronauts, they will explore the Moon's South Pole and learn to live and work around the Moon.

Throughout their journey, NASA missions and astronauts must communicate with mission control on Earth. NASA's Space Communications and Navigation (SCaN) program operates the Deep Space Network and Near Space Network to ensure explorers can always call home. These networks also enable missions to send back important science information - like pictures and videos! NASA currently uses radio waves to communicate information to and from spacecraft, but the agency is testing the use of invisible laser light to send more data at once! NASA is also creating LunaNet, an "internet" on the Moon that will allow explorers and missions to easily communicate with each other and Earth. This will be similar to what humans experience on Earth. To learn more, check out the resources below.



Illustrate the adventures of NASA's Artemis astronauts by creating your own comic.

Aa

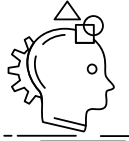
DEVELOP THE STORY

On the next page, you'll find script options. Choose which text to use and which text to remove, consider adding your own!



SKETCH SIMPLY

Use scratch paper to draw your comic. Use shapes, lines, colors, and symbols to represent your ideas.



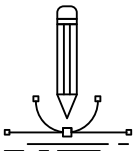
THINK OUTSIDE THE BOX

Consider other creative ways to show the story. Not every image must be literal.



EXPERIMENT & EXPLORE

Don't be afraid to start over with a fresh page if you don't like the way it's shaping up!



CREATE FIRST; EDIT LATER

Do a rough draft before making your final copy.



RELAX. HAVE FUN!

Don't worry about making the perfect comic. Have fun with your ideas and drawings.

RESOURCES

NASA Networks

go.nasa.gov/3py6BER

LunaNet

go.nasa.gov/3qvFpG9

Deep Space Communications Educator Guide

go.nasa.gov/3J68wal

SCaN Educational Resources

go.nasa.gov/3EAEzwl

First Woman Graphic Novel

go.nasa.gov/3FCpfRy

HOW WILL YOU CONTRIBUTE TO ARTEMIS?

Consider adding yourself or your friends to the story as mission controllers, astronaut trainers, radio operators, astronauts, or other contributors.

Many thanks to Evan Keeling from the Smithsonian Institution's Exhibit Design team for sharing his original implementation of this activity with us.

Submit scans of your comic to
GSFC-SCaN-engagement@mail.nasa.gov
and you could be featured on NASA's social media!

ILLUSTRATE NASA'S JOURNEY TO THE MOON

SCaN Comic Activity

National Aeronautics and
Space Administration



SCRIPT OPTIONS

Choose scripts for your comic from the sequential options below, or make up your own!

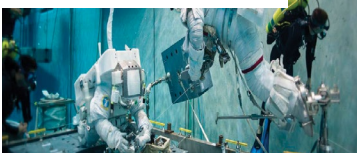
- Astronauts train for years to prepare for their journey into space.
- NASA's Artemis missions will see the first woman and first person of color on the Moon!
- Astronauts launch on the Space Launch System, the most powerful rocket ever built.
- Astronauts live in the Orion spacecraft on the way to the Moon.
- During their journey, astronauts talk to mission control through radio waves and laser light systems!
- Ground antennas and in-space relays connect with missions to gather important information like health, safety, and science data.
- Using navigation, later missions will dock with NASA's Gateway, an orbiting laboratory for astronauts to live and work.
- Then a human landing system takes astronauts down to the Moon's surface.
- On the Moon, astronauts conduct experiments and collect data and samples.
- LunaNet, "internet" on the Moon, allows astronauts to stay connected to Earth as they explore.
- The human landing system takes astronauts back to Gateway and they board Orion to prepare for take-off to Earth.
- The Orion spacecraft journeys back to Earth, blasting through the atmosphere.
- The capsule splashes down in the Pacific Ocean and the astronauts return home.
- NASA sends astronauts to the Moon to practice before going to Mars!

REFERENCE IMAGES

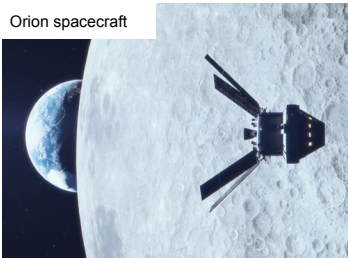
If you want more reference images for visual pieces to include in your comic, check out <https://images.nasa.gov/>.

Here are some keywords to get your searches started: Artemis, Orion Spacecraft, Gateway, Antenna, and International Space Station.

Astronauts training in the Neutral Buoyancy Lab



Advanced spacesuits



Orion spacecraft

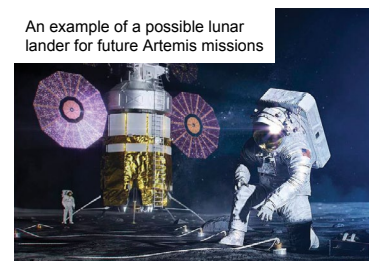


The Starship human landing system for Artemis III

The Space Launch System



Gateway



An example of a possible lunar lander for future Artemis missions



Antennas in White Sands, NM



LunaNet



The Orion capsule slows down while re-entering Earth's atmosphere



The Orion capsule splashing down safely

ILLUSTRATE NASA'S JOURNEY TO THE MOON

SCaN Comic Activity

National Aeronautics and
Space Administration



ARTIST FIRST NAME:

AGE:

#



LOCATION:

COMICS

MAKING THE CONNECTION

THE ARTEMIS GENERATION

Submit scans of your comic covers to
GSFC-SCaN-engagement@mail.nasa.gov

20242028231513114



www.nasa.gov

KEEPING OUR EXPLORERS
CONNECTED TO HOME

ILLUSTRATE NASA'S JOURNEY TO THE MOON

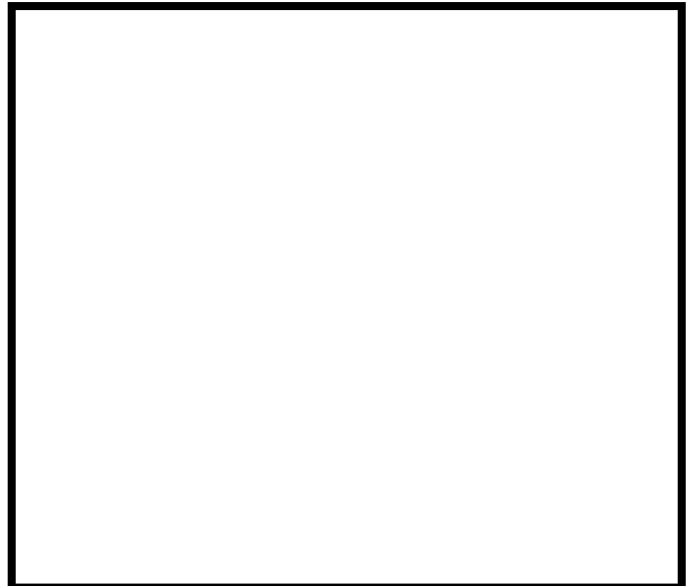
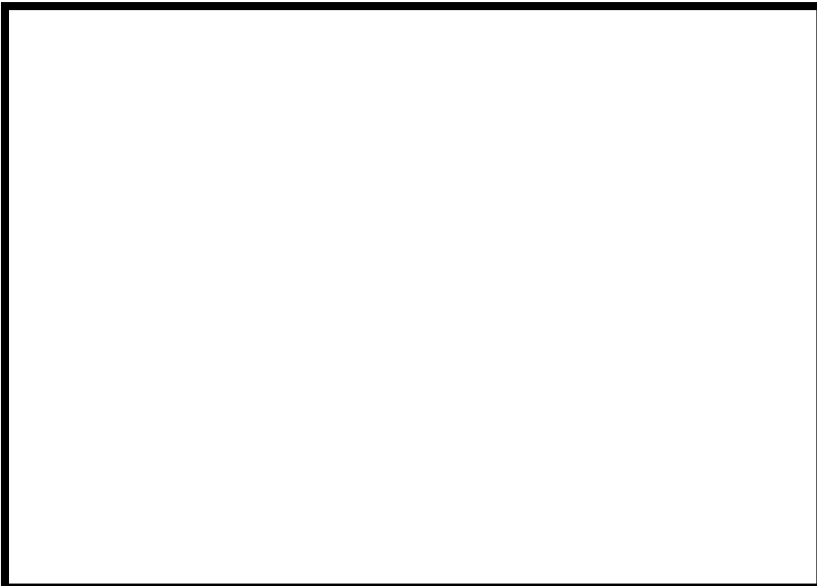
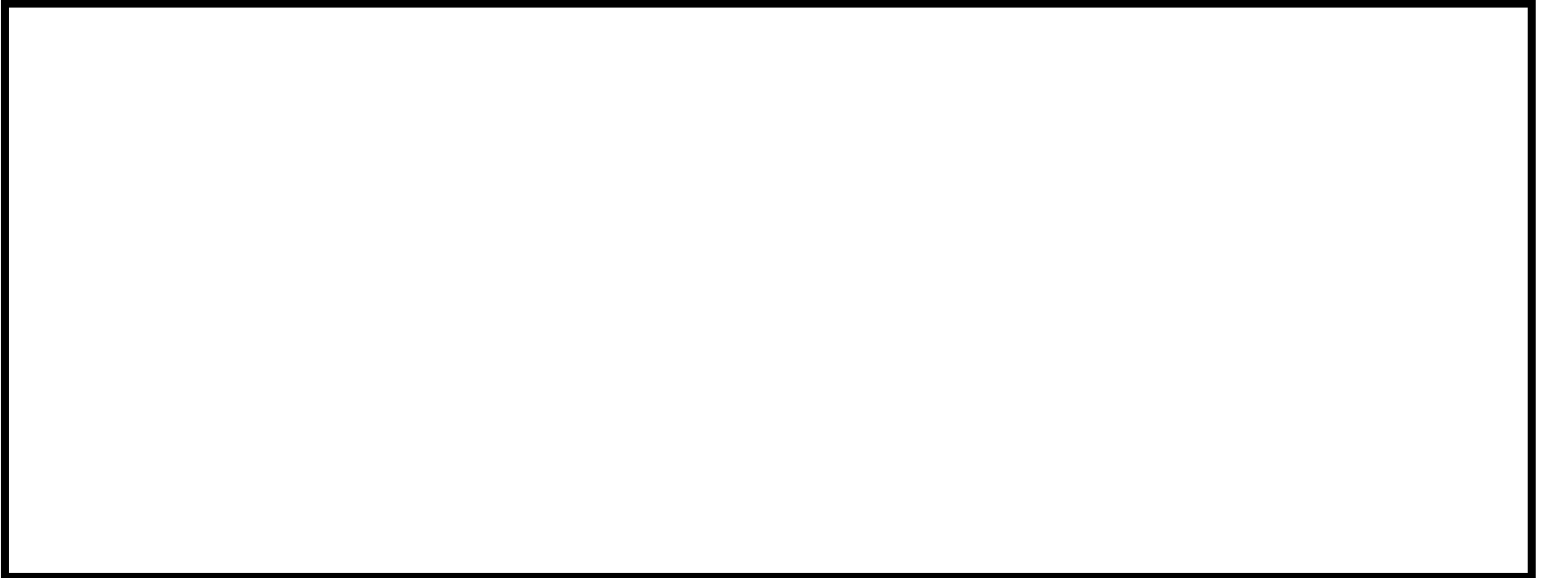
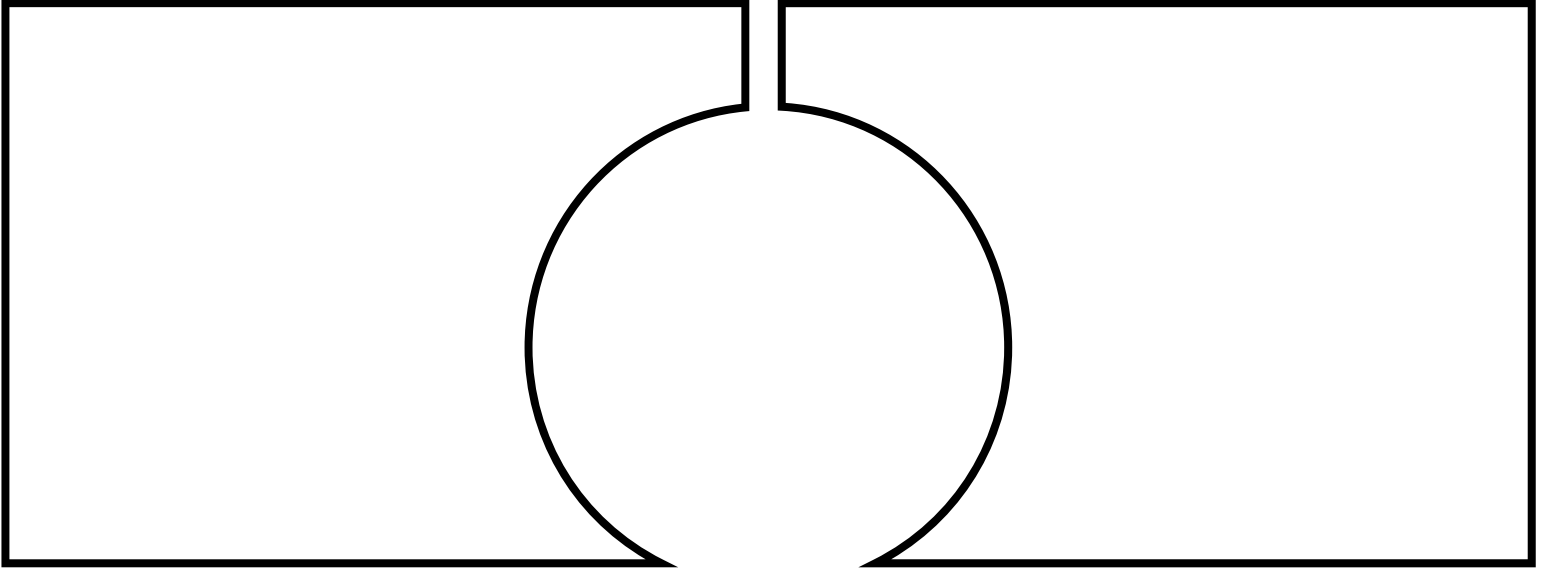
ARTIST FIRST NAME, AGE:

LOCATION:

National Aeronautics and
Space Administration



Submit scans of your comic panels to GSFC-SCaN-engagement@mail.nasa.gov



ILLUSTRATE NASA'S JOURNEY TO THE MOON

ARTIST FIRST NAME, AGE:

LOCATION:

National Aeronautics and
Space Administration



Submit scans of your comic panels to GSFC-SCaN-engagement@mail.nasa.gov

A large area containing five empty comic panels. The top row consists of two panels: the left one is a vertical rectangle, and the right one is a horizontal rectangle. Below these are three more panels: a vertical rectangle on the left, a horizontal rectangle in the middle, and a large vertical rectangle on the right.

ILLUSTRATE NASA'S JOURNEY TO THE MOON

ARTIST FIRST NAME, AGE:

LOCATION:

National Aeronautics and
Space Administration



Submit scans of your comic panels to GSFC-SCaN-engagement@mail.nasa.gov