

June 30, 1942

CENTRAL HEATING PLANT

Use: To supply heat to buildings in new area.

Authority: Second Deficiency Appropriation Act fiscal year 1939; approved May 2, 1939. Public No. 61, 76th Congress.

Location: New area inside west gate, Langley Field, Va.; approved by Secretary of War.

History: Preliminary work on central heating plant started September 19, 1939. Central heating plant was put in operation March 15, 1941.

Construction:

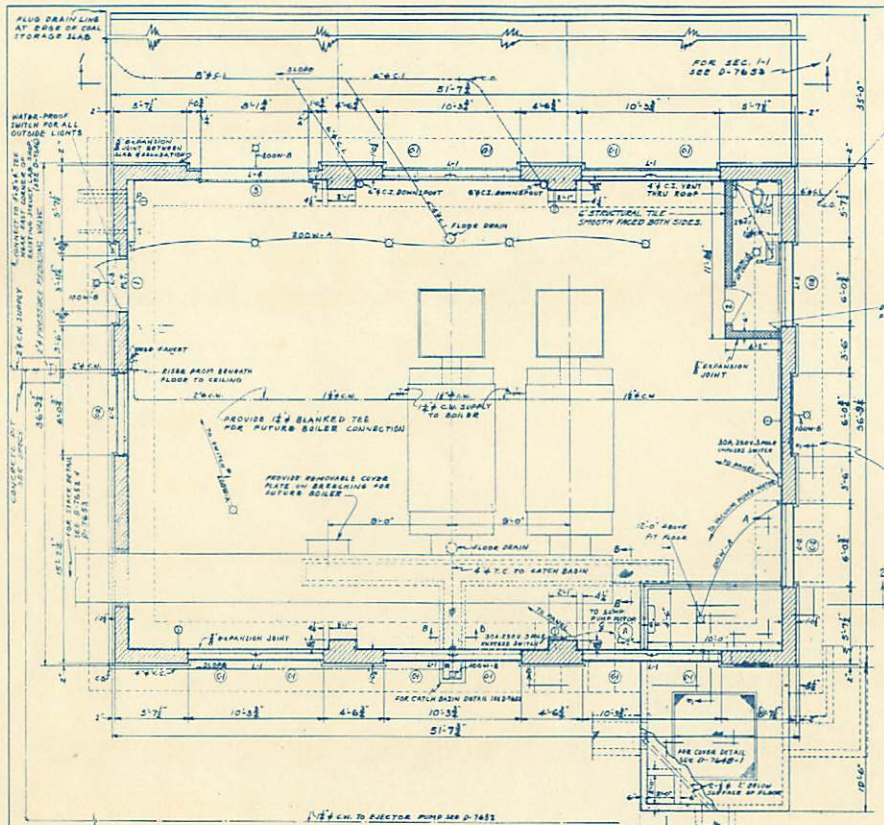
Dimensions of building	51'-7 3/4" x 36'-9 1/4" x approx. 22'-9" high
Ground area	1,900 sq ft
Cubic contents	34,200 cu ft
Character	Structural steel frame with brick walls
Type and thickness of walls	Brick walls 8" thick
Type and thickness of floor	5" concrete slab
Type of roof	Steel deck on steel joists with 1" insulation and 5 ply saturated felt covered with gravel or slag.

Cost

Cost of central heating plant complete	\$44,815.43
Cost per cu ft	1.310

Main Contractor

Contract NAW-876, National Heating Company. Work started August 11, 1940; completed June 6, 1941 - price \$40,925.50



FLOOR PLAN
SCALE: 1/4"=1'-0"

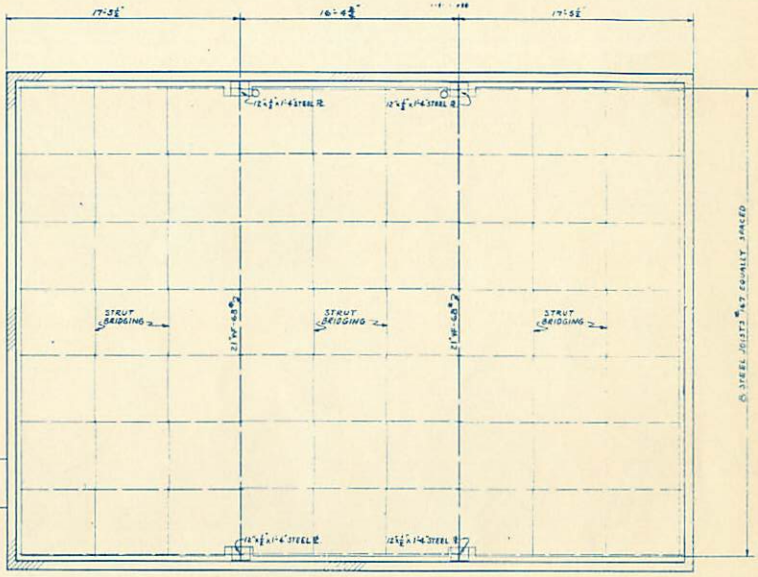
DOOR SCHEDULE			
NO.	TYPE	NO. DOOR OPG. REQD.	REMARKS
1	WOOD	1	STAINLESS STEEL PLATING IN CASE PANELS & TRAIL
2	WOOD	1	ON 12" PANELS
3	STEEL	1	FOR CATCH BASIN - MANUALLY OPERATED

LINTEL SCHEDULE			
NO.	TYPE	MATERIAL	LENGTH
L-1	3	20" x 8" x 1/2"	11'-4"
L-2	4	20" x 8" x 1/2"	7'-7"
L-3	1	20" x 8" x 1/2"	8'-0"
L-4	1	18" x 8" x 1/2"	8'-0"

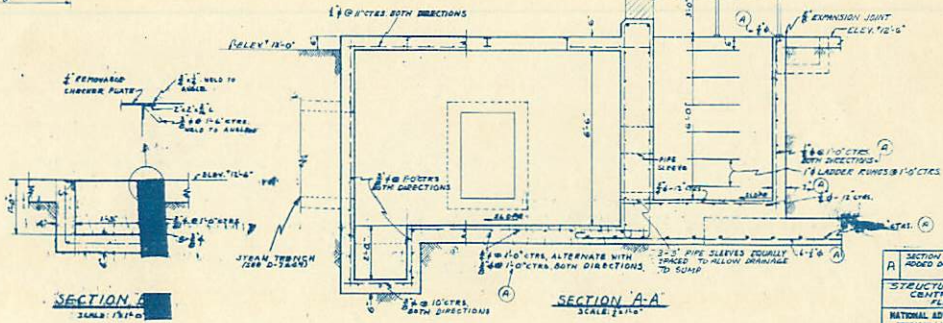
WINDOW SCHEDULE			
NO.	TYPE	NO. WINDOW OPG. REQD.	REMARKS
C-1	ALUMINUM	10	2" SPACERS - 1" W/INSUL PER SPACER
C-2	40	2	2" SPACERS - 1" W/INSUL PER SPACER
C-3	40	1	2" SPACERS - 1" W/INSUL PER SPACER
C-4	ALUMINUM	1	2" SPACERS - 1" W/INSUL PER SPACER

NOTE:
FOR LEGEND SEE D-7652

1/2" V.C. CONCRETE TO SANITARY BRASS HANDLE NEAR EAST CORNER OF EXISTING STRUCTURE LABORATORY SHOP.



ROOF PLAN (SHOWING EXTERIOR WORK OMITTED)
SCALE: 1/4"=1'-0"



SECTION A-A
SCALE: 1/4"=1'-0"

SECTION A-A
SCALE: 1/4"=1'-0"

SECTION A-A CONTAINED SECTIONS
TAKEN ON FLOOR PLAN - SEE D-7652

**STRUCTURES LABORATORY AREA
CENTRAL HEATING PLANT
FLOOR & ROOF PLAN**

NATIONAL ADVISORY COMMITTEE FOR AERONAUTICS
RESEARCH LABORATORY - WASHINGTON, D.C.

0-7651