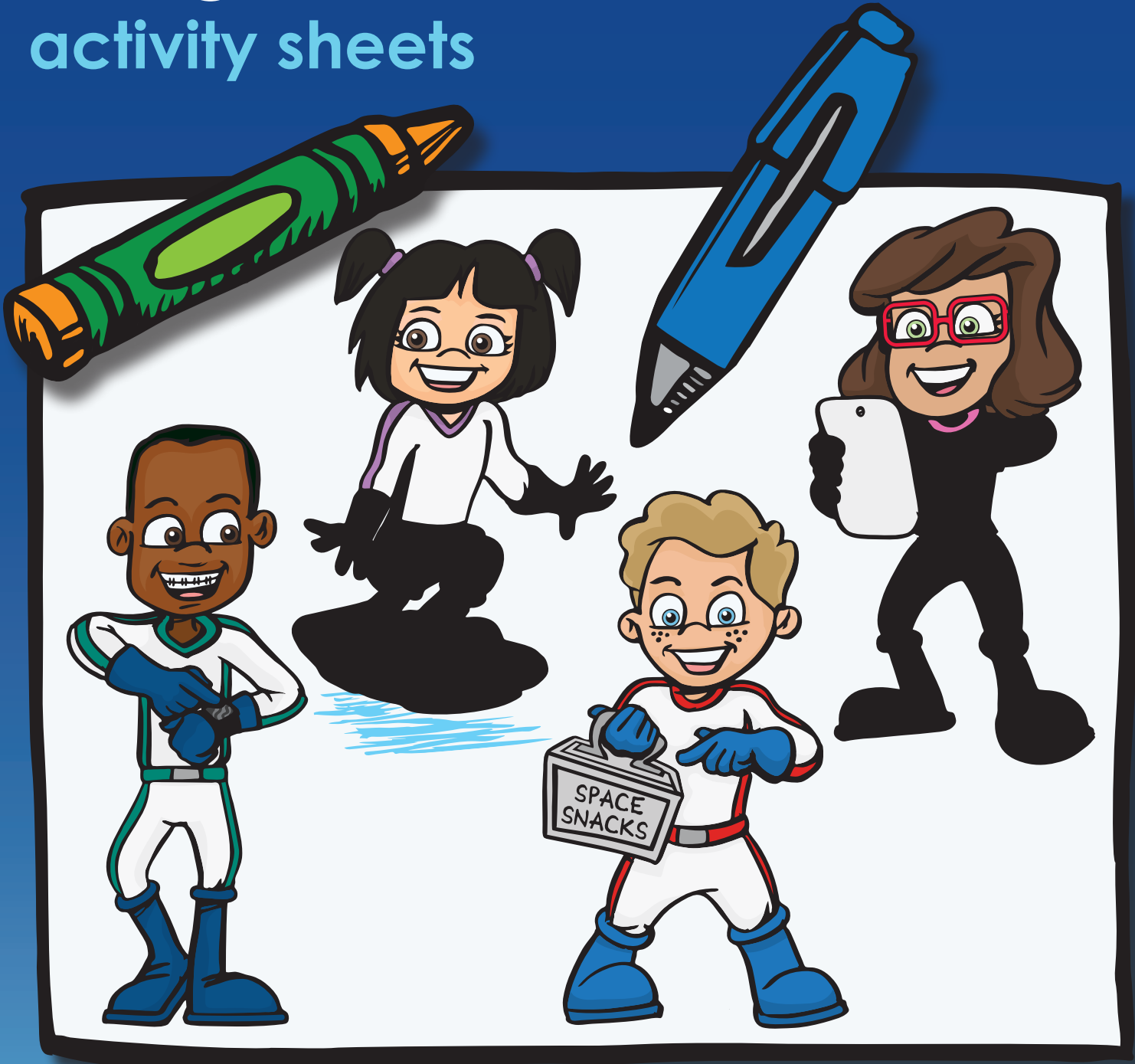
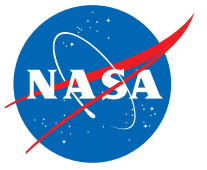


# Aa-Zz

activity sheets

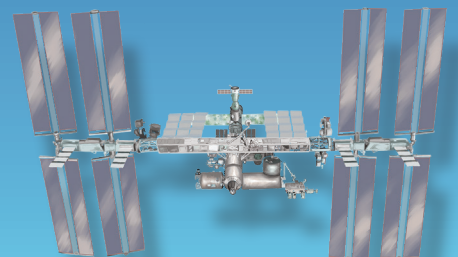
National Aeronautics and  
Space Administration



COMMERCIAL  
**CREW**

[www.nasa.gov](http://www.nasa.gov)

SP-2020-04-496-KSC





# Aa

for astronaut



astronaut

Aa Aa

COMMERCIAL  
**CREW**

[www.nasa.gov](http://www.nasa.gov)

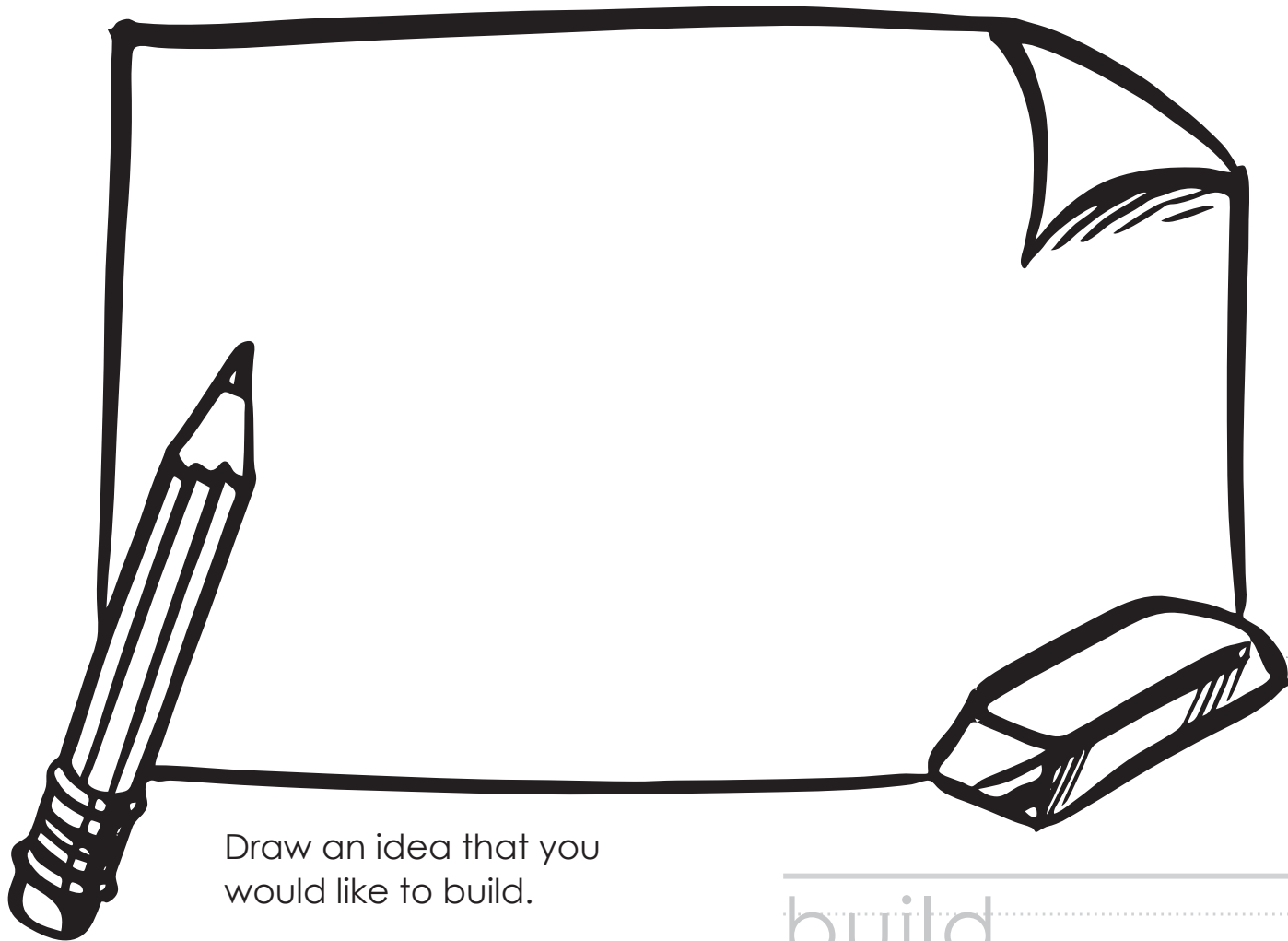
SP-2020-04-443-KSC

On Earth and in space, an **astronaut** needs air, food, and water to survive.



# Bb

for build



Draw an idea that you  
would like to build.

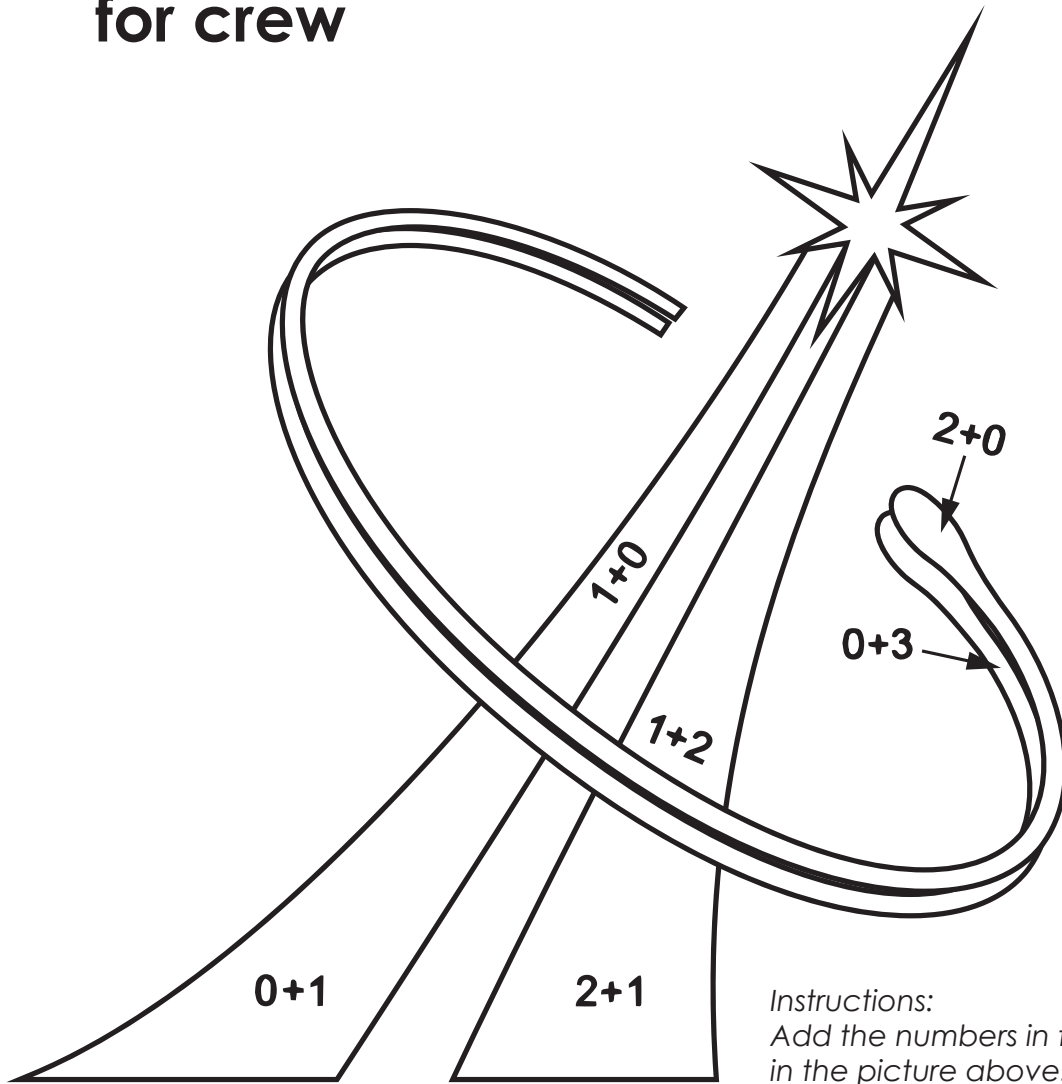
build

B	b	B	b								
---	---	---	---	--	--	--	--	--	--	--	--

COMMERCIAL  
**CREW**

What type of rocket would you  
**build** to help NASA bring people  
to space?

# Cc for crew



3 = blue

2 = yellow

1 = red

Instructions:

Add the numbers in the addition problems in the picture above. Then color each part of the picture using the color that matches the sum.

crew

C	c	C	c																
---	---	---	---	--	--	--	--	--	--	--	--	--	--	--	--	--	--	--	--

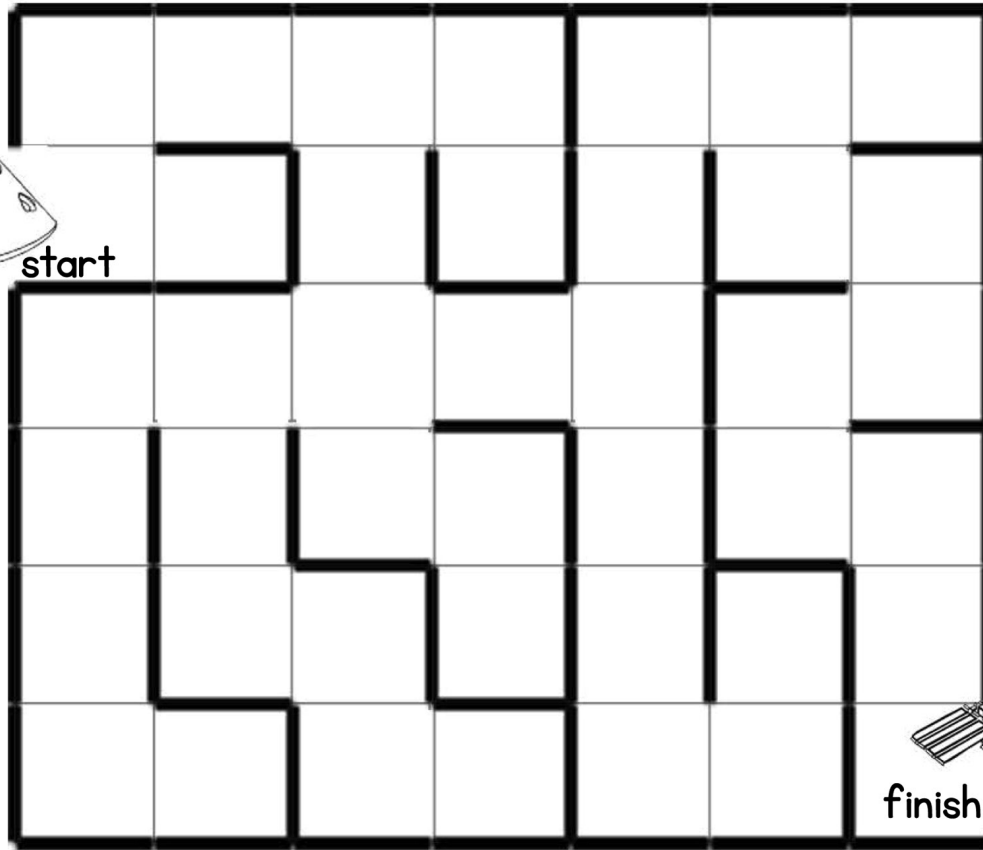
COMMERCIAL  
**CREW**

Commercial **Crew** Program will launch astronauts to space on American rockets.

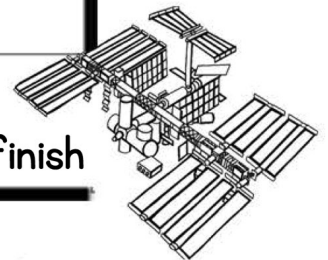
# Dd



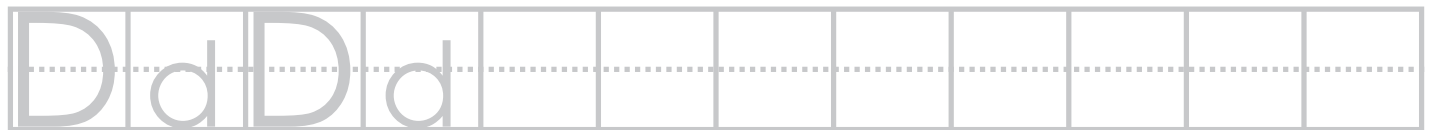
start



finish



direction



COMMERCIAL  
**CREW**

Help provide the right direction through the maze so the crew can arrive safely to the International Space Station.



# Ee

for exercise



exercise

E e E e

COMMERCIAL  
**CREW**

[www.nasa.gov](http://www.nasa.gov)

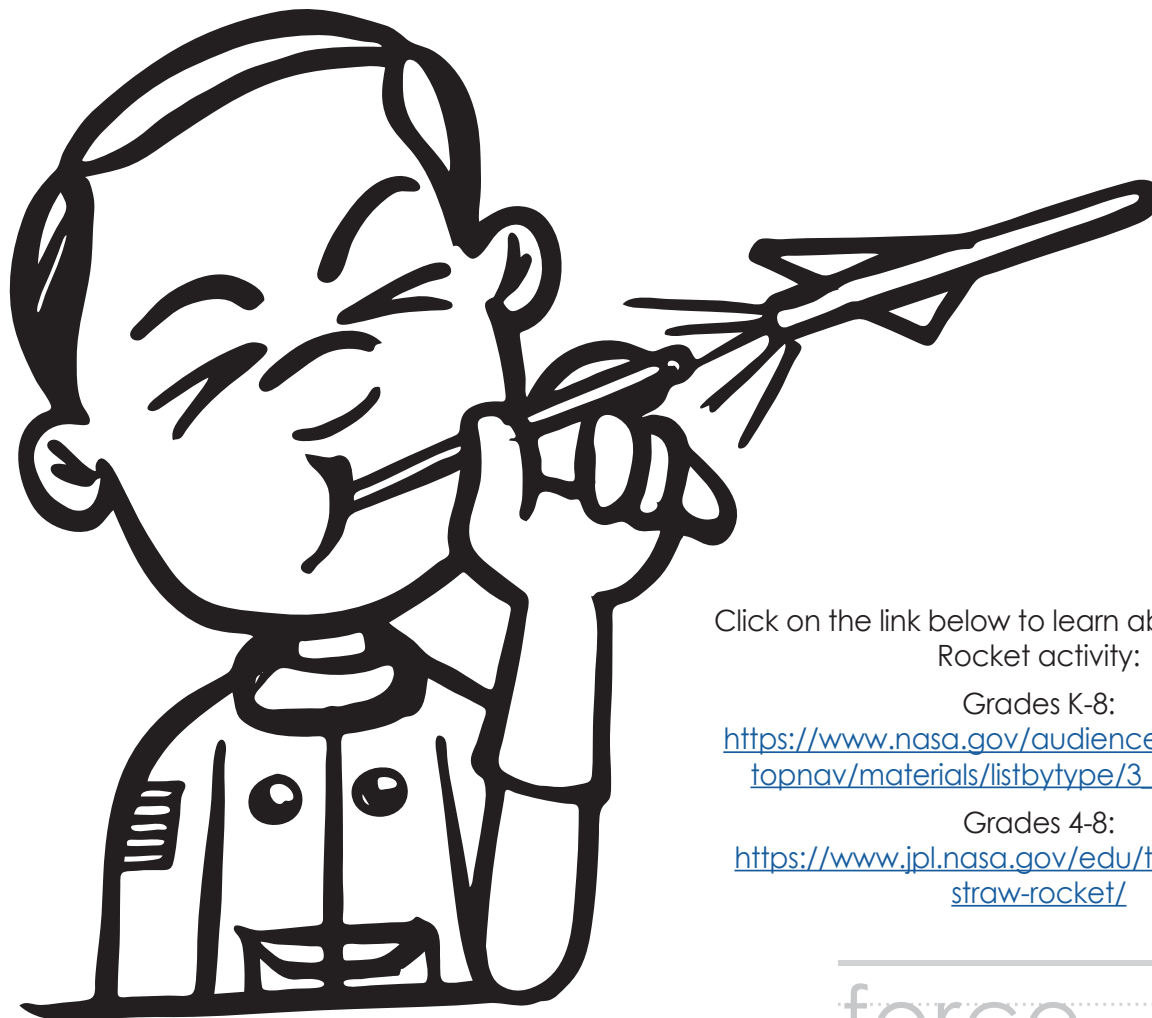
SP-2020-04-447-KSC

**Exercise** is important for health and fitness. What types of exercises do you think astronauts do in space?



# Ff

for force



Click on the link below to learn about a fun Straw Rocket activity:

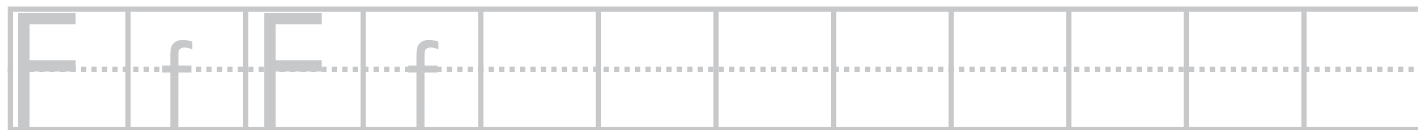
Grades K-8:

[https://www.nasa.gov/audience/foreducators/topnav/materials/listbytype/3\\_2\\_1\\_Puff.html](https://www.nasa.gov/audience/foreducators/topnav/materials/listbytype/3_2_1_Puff.html)

Grades 4-8:

<https://www.jpl.nasa.gov/edu/teach/activity/straw-rocket/>

force



COMMERCIAL  
**CREW**

A push or pull is a force that makes things move. Experiment with force by building your own straw rocket.

# Gg

for gravity

National Aeronautics and  
Space Administration



gravity

Gg Gg

COMMERCIAL  
**CREW**

[www.nasa.gov](http://www.nasa.gov)

SP-2020-04-449-KSC

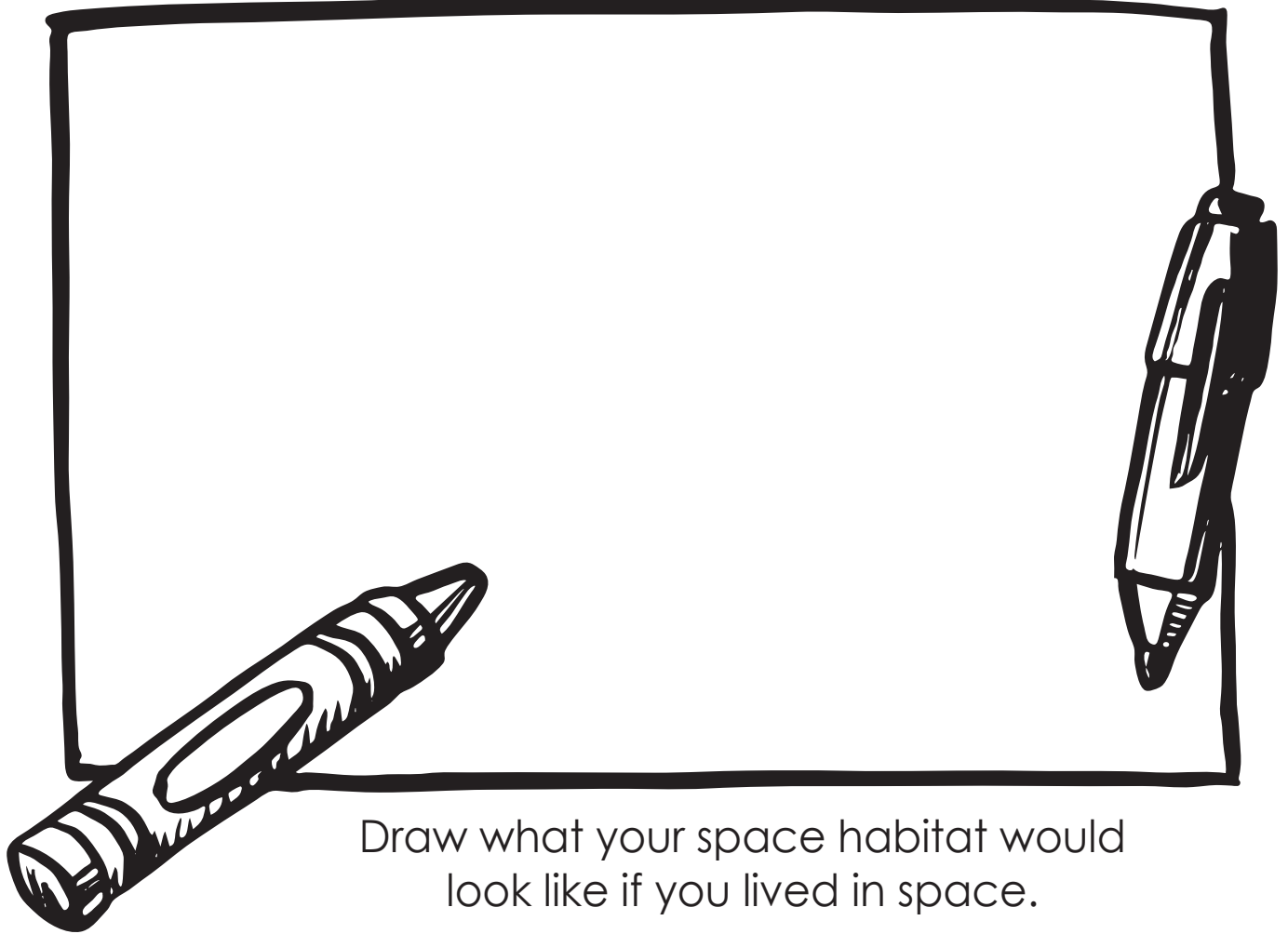
When you jump in the air, **gravity** is a force that pulls you back down toward Earth.



# Hh

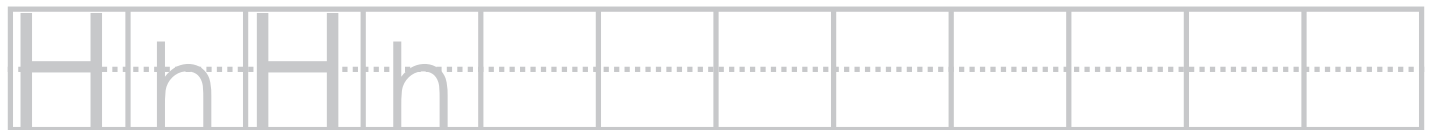
for habitat

National Aeronautics and  
Space Administration



Draw what your space habitat would look like if you lived in space.

habitat



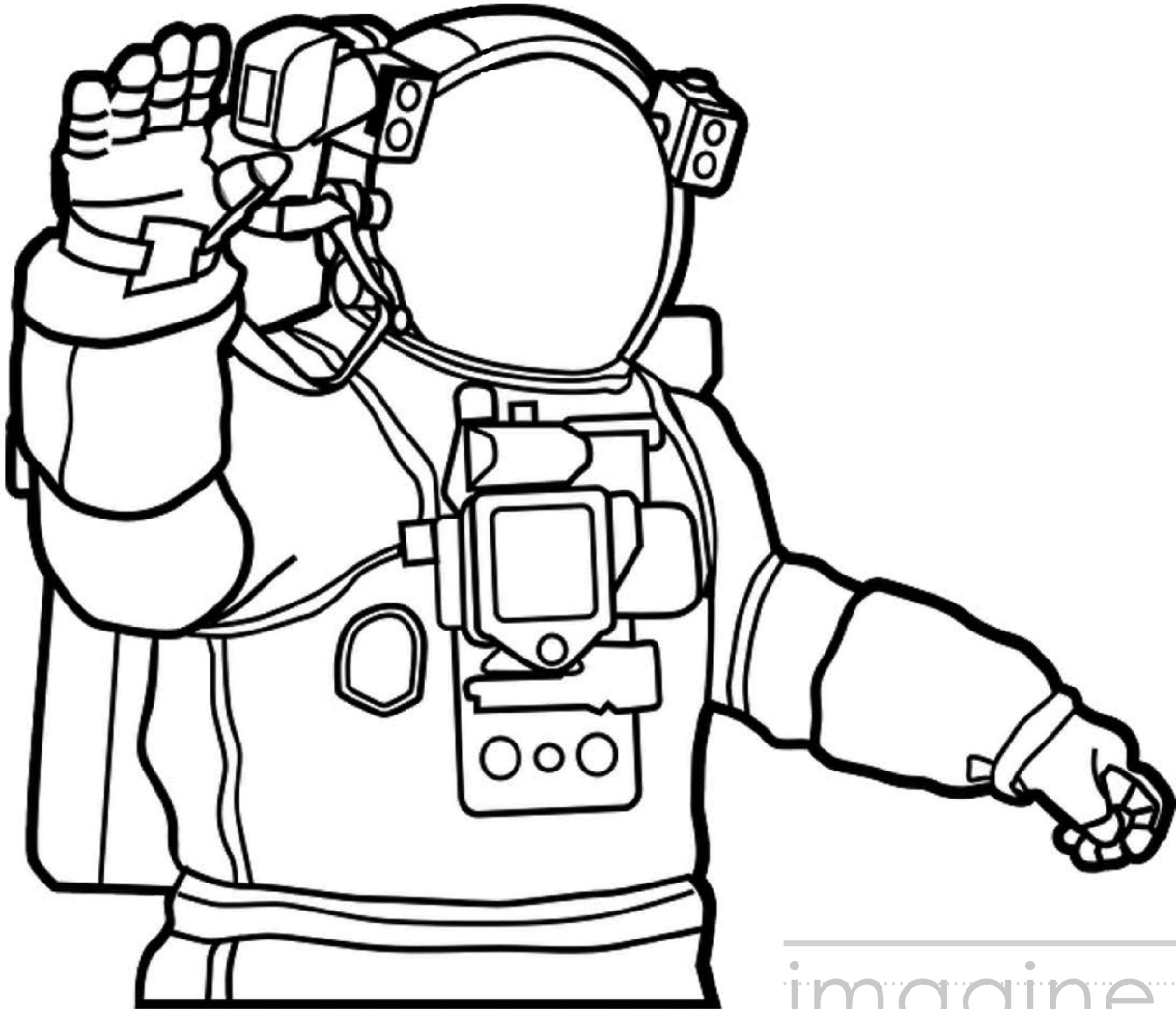
A habitat is a place to live. What would you bring with you?

COMMERCIAL  
**CREW**

[www.nasa.gov](http://www.nasa.gov)

SP-2020-04-450-KSC

li



imagine

l	i	l	i																
---	---	---	---	--	--	--	--	--	--	--	--	--	--	--	--	--	--	--	--

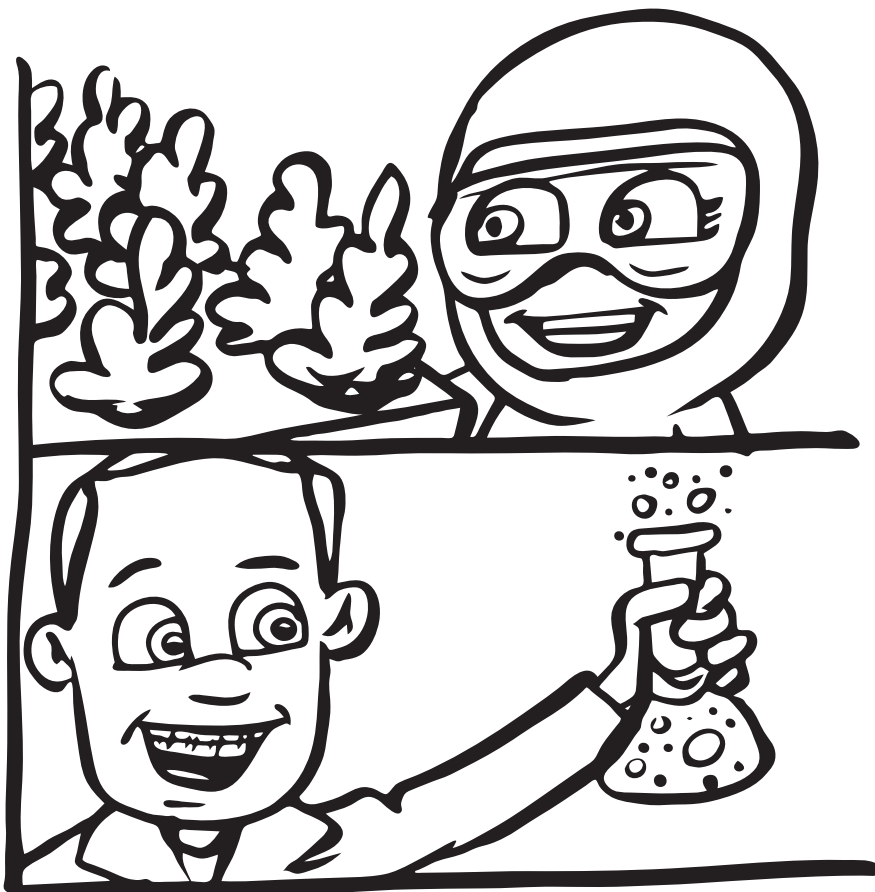
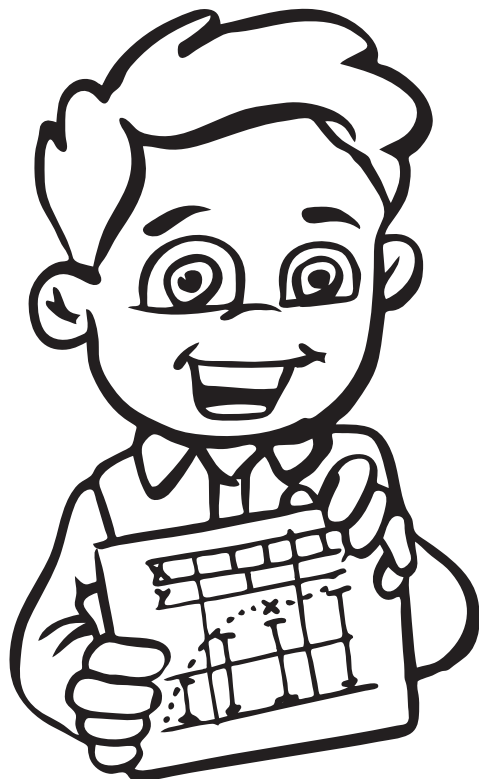
COMMERCIAL  
**CREW**

Imagine yourself as an astronaut.  
Draw your own face in the helmet  
above to show how you look in  
a spacesuit.



# Jj

for jobs



jobs

J j J j

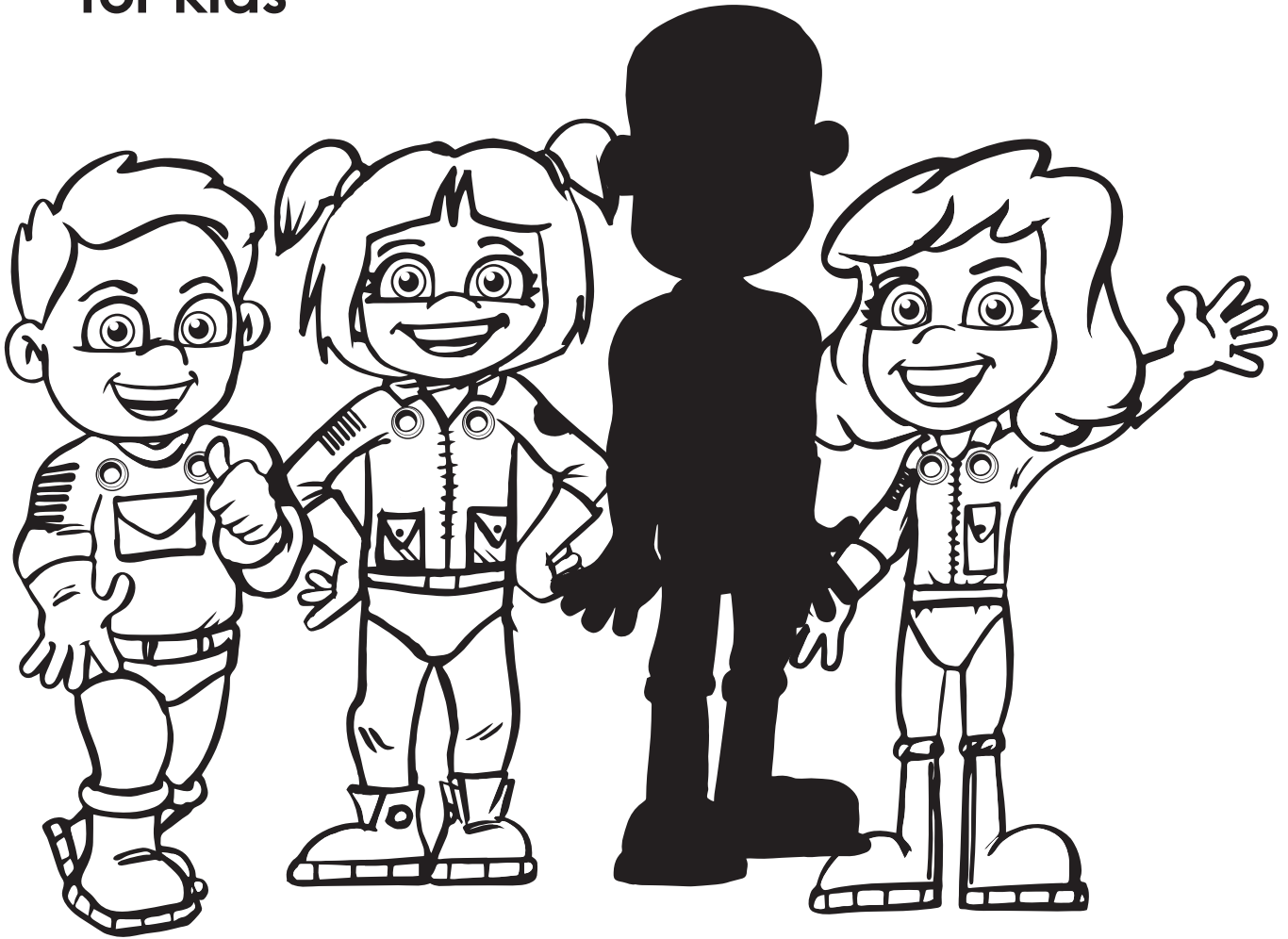
COMMERCIAL  
**CREW**

Scientists, engineers, teachers,  
lawyers, nurses and even artists  
can get jobs at NASA.

# Kk

for kids

National Aeronautics and  
Space Administration



kids



COMMERCIAL  
**CREW**

[www.nasa.gov](http://www.nasa.gov)

SP-2020-04-453-KSC

NASA Kids' Club is a website for kids to explore and learn more with NASA. Join in on the fun, go to [nasa.gov/kidsclub](http://nasa.gov/kidsclub).

# L

## for Launch



launch

l	l	l	l	l	l	l	l	l	l
---	---	---	---	---	---	---	---	---	---

COMMERCIAL  
**CREW**

[www.nasa.gov](http://www.nasa.gov)

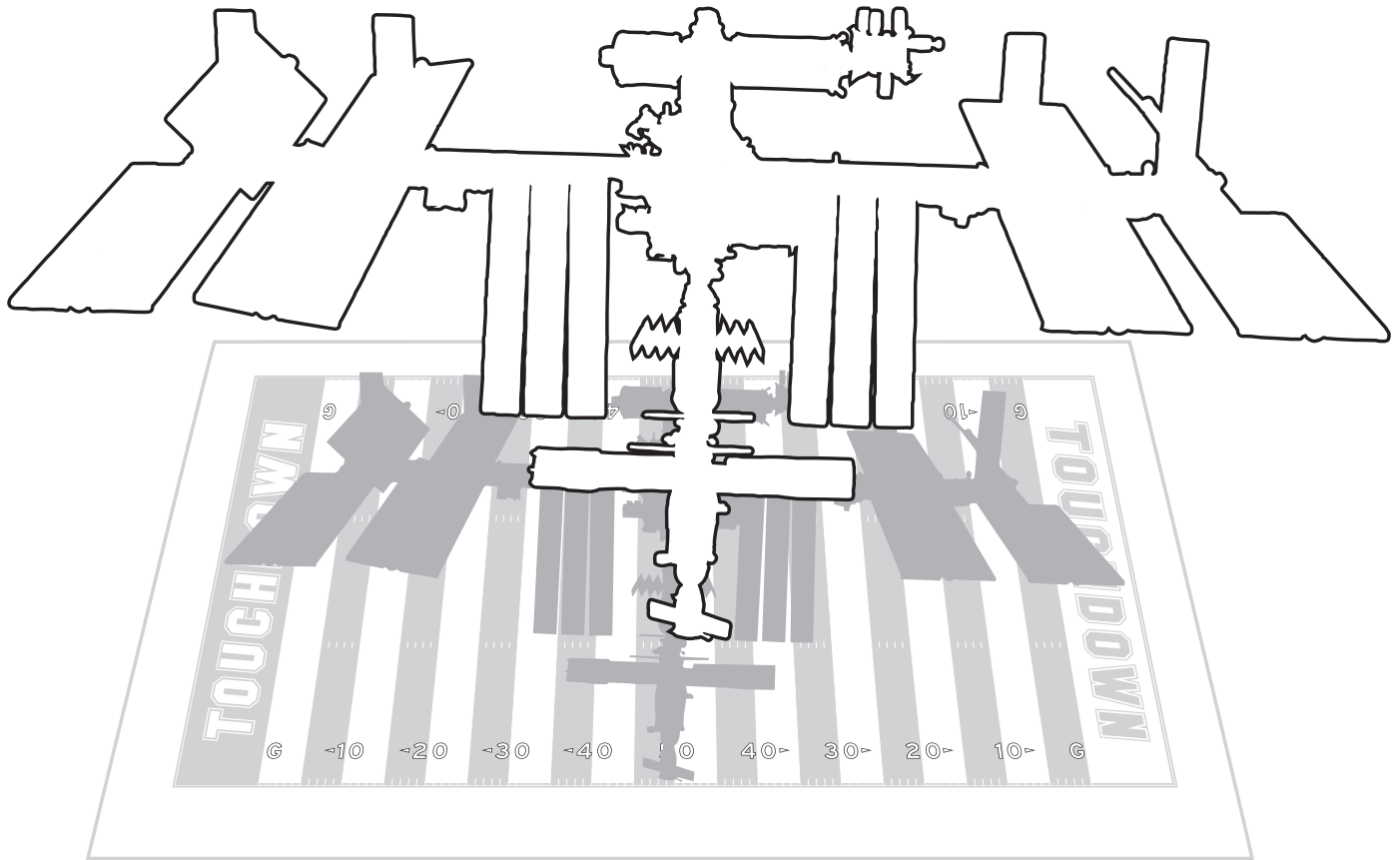
SP-2020-04-454-KSC

NASA does a countdown before launch to make sure the rocket and crew are ready to liftoff into the sky.



# Mm

for measure



measure



COMMERCIAL  
**CREW**

The International Space Station has a **measure** of 357 feet long, nearly the full length of an American football field.

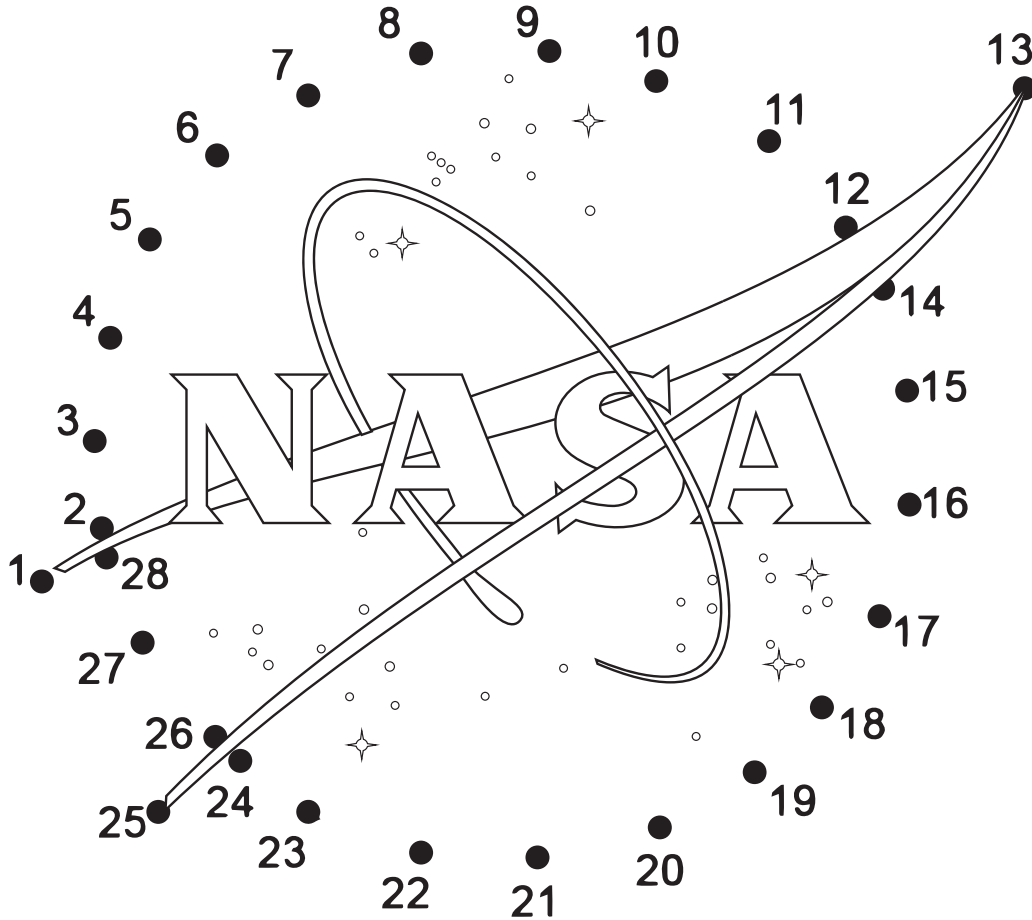
# Nn for NASA

National Aeronautics and  
Space Administration



Instructions:

Connect-the-dots to complete the sphere then color it blue.  
Color the vector (wing shape) red, and color the stars,  
letters, and the spacecraft orbit circle that flies around them white.



NASA

N n N n

COMMERCIAL  
**CREW**

www.nasa.gov

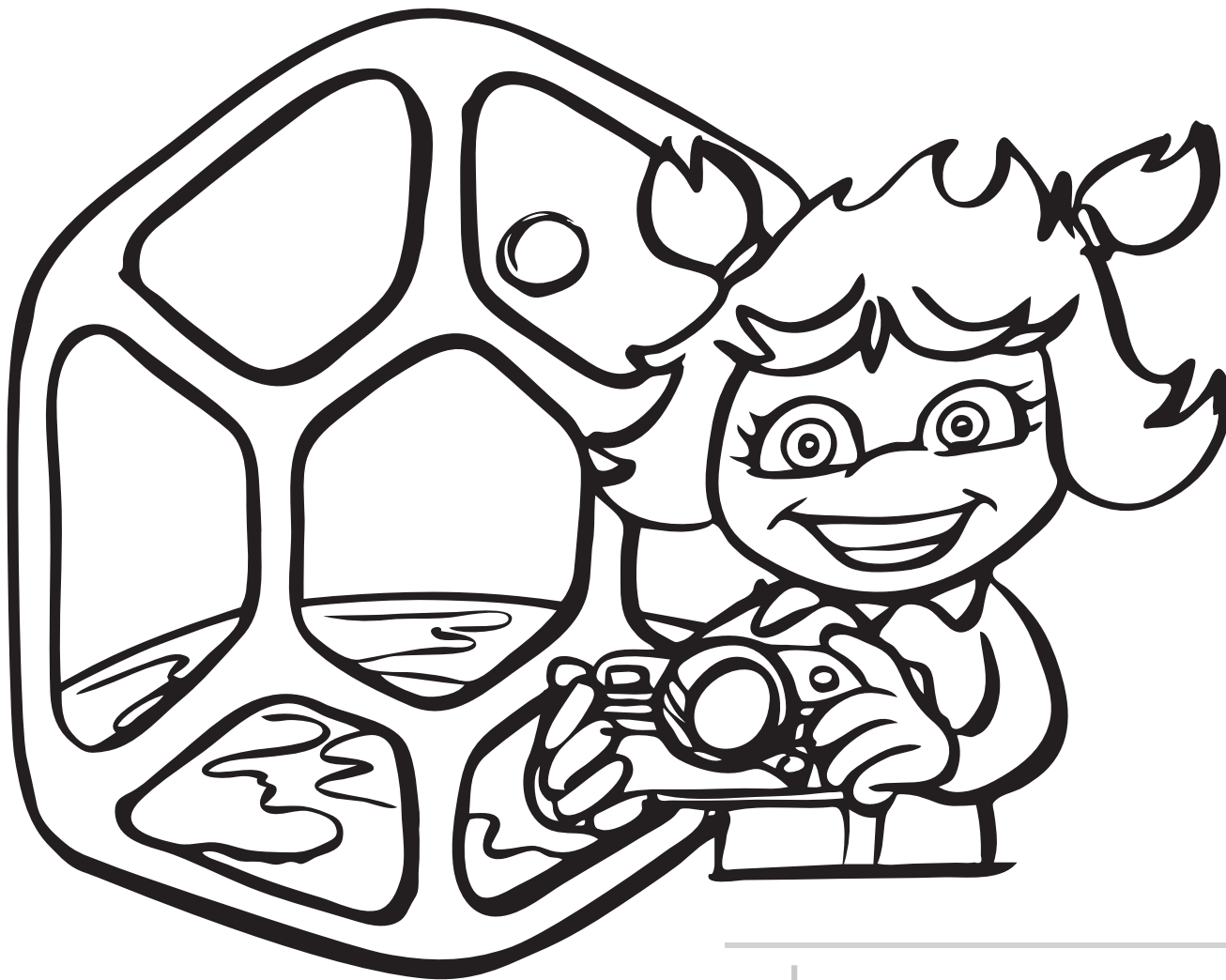
SP-2020-04-481-KSC

Founded in 1958, the National  
Aeronautics and Space Aministration is  
commonly known as NASA. The blue logo  
is sometimes called, "the meatball!"

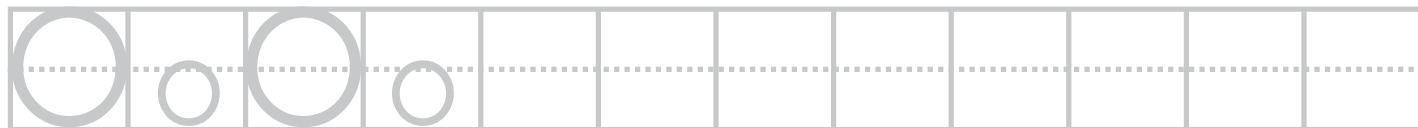


O o

for observe



observe



COMMERCIAL  
**CREW**

NASA uses many tools to **observe** Earth, our solar system and deep space. Check out "Earth Observatory for Kids" at <https://earthobservatory.nasa.gov/blogs/eokids>



# Pp

## for parachute

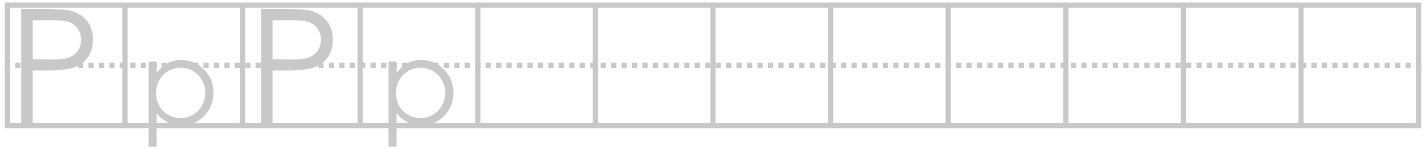
National Aeronautics and  
Space Administration



click the Link to try your hand  
at a fun parachute activity:

[https://www.jpl.nasa.gov/edu/teach/activity/  
parachute-design/](https://www.jpl.nasa.gov/edu/teach/activity/parachute-design/)

parachute



COMMERCIAL  
**CREW**

[www.nasa.gov](http://www.nasa.gov)

SP-2020-04-483-KSC

A **parachute** canopy is large and made of fabric that can trap lots of air to slow down the speed of a person or spacecraft.



# Qq

for questions



questions

Q q Q q

COMMERCIAL  
**CREW**

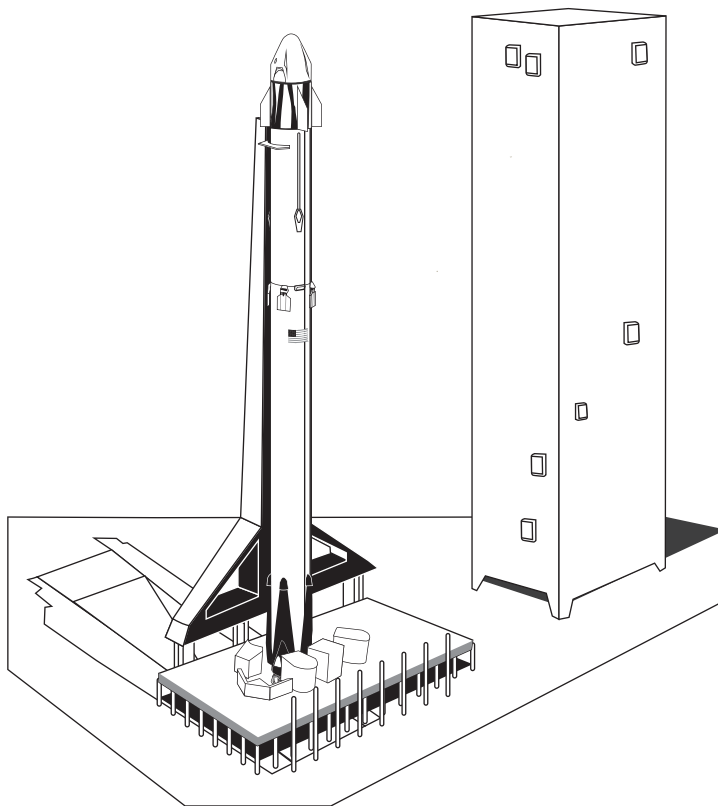
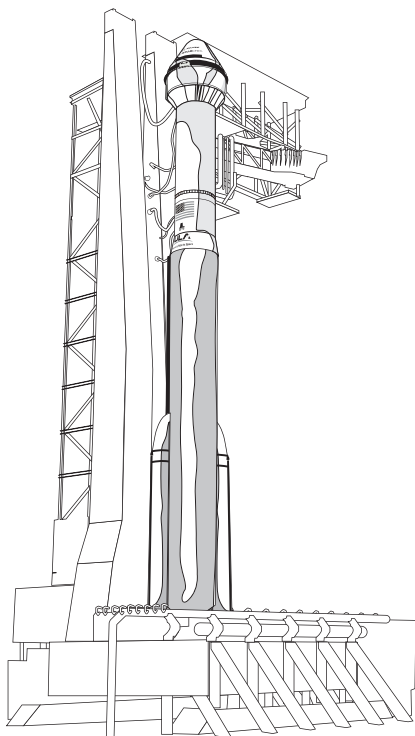
A scientist is a person who asks questions and follows steps to find answers.

Name some question words.



# Rr

for rocket



rocket

Rr Rr

COMMERCIAL  
**CREW**

[www.nasa.gov](http://www.nasa.gov)

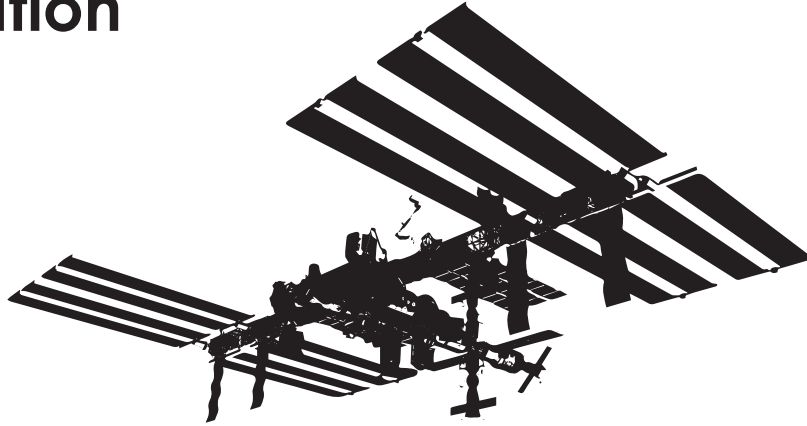
SP-2020-04-486-KSC

NASA uses different **rocket** types to transport people and supplies to the International Space Station.

# Ss

for station

National Aeronautics and  
Space Administration



station

[spotthestation.nasa.gov](https://spotthestation.nasa.gov)

S s S s

COMMERCIAL  
**CREW**

[www.nasa.gov](https://www.nasa.gov)

SP-2020-04-487-KSC

The International Space **Station** is an orbiting habitat where astronauts can live and work. Go to [spotthestation.nasa.gov](https://spotthestation.nasa.gov) and view the **station** in your night sky.

# Tt



team



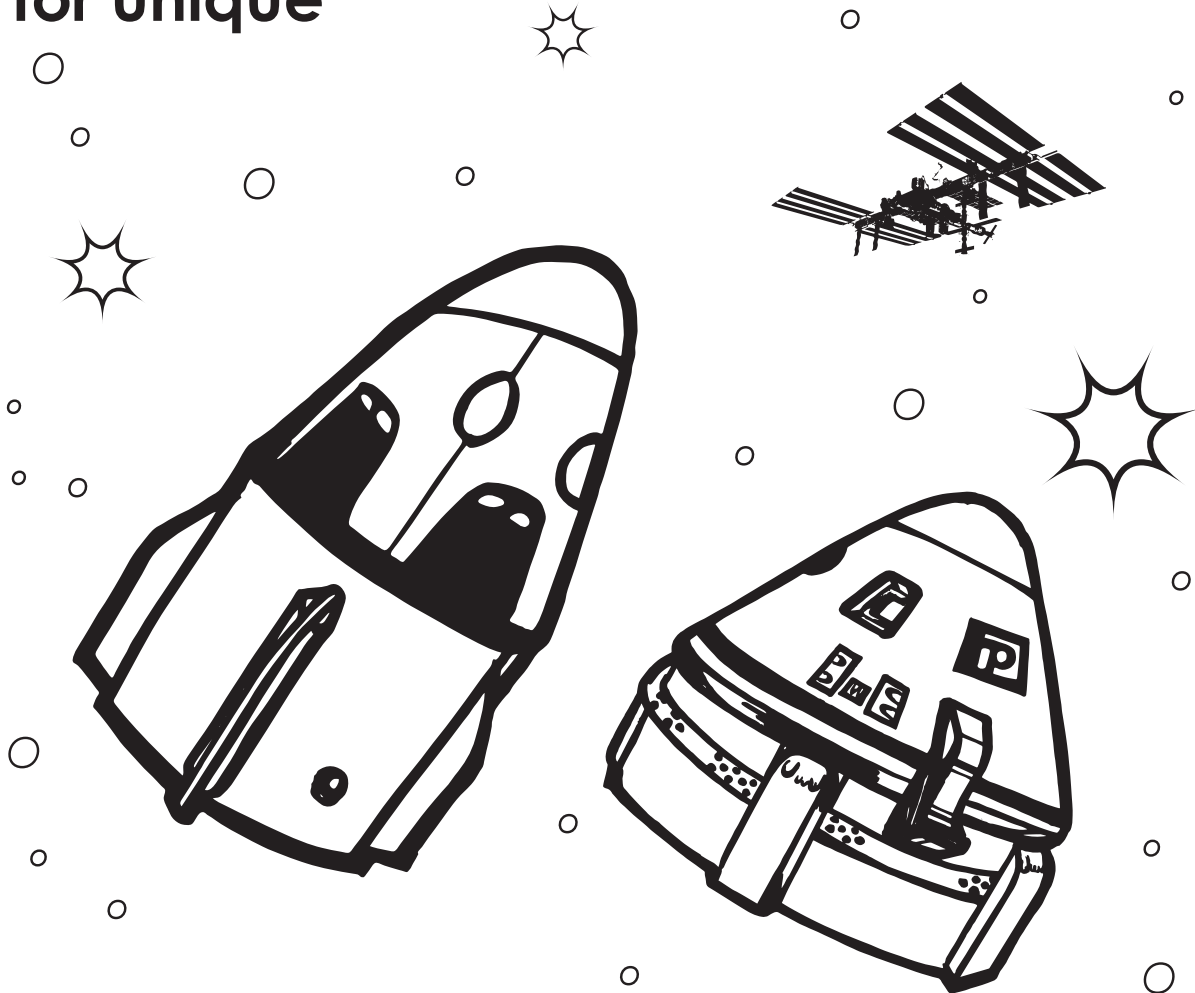
COMMERCIAL  
**CREW**

The NASA **team** designs and builds spacecraft, plans missions, launches rockets, and recovers space capsules after they land back on Earth.



# Uu

for unique



unique

U	U	U	U																
---	---	---	---	--	--	--	--	--	--	--	--	--	--	--	--	--	--	--	--

COMMERCIAL  
**CREW**

[www.nasa.gov](http://www.nasa.gov)

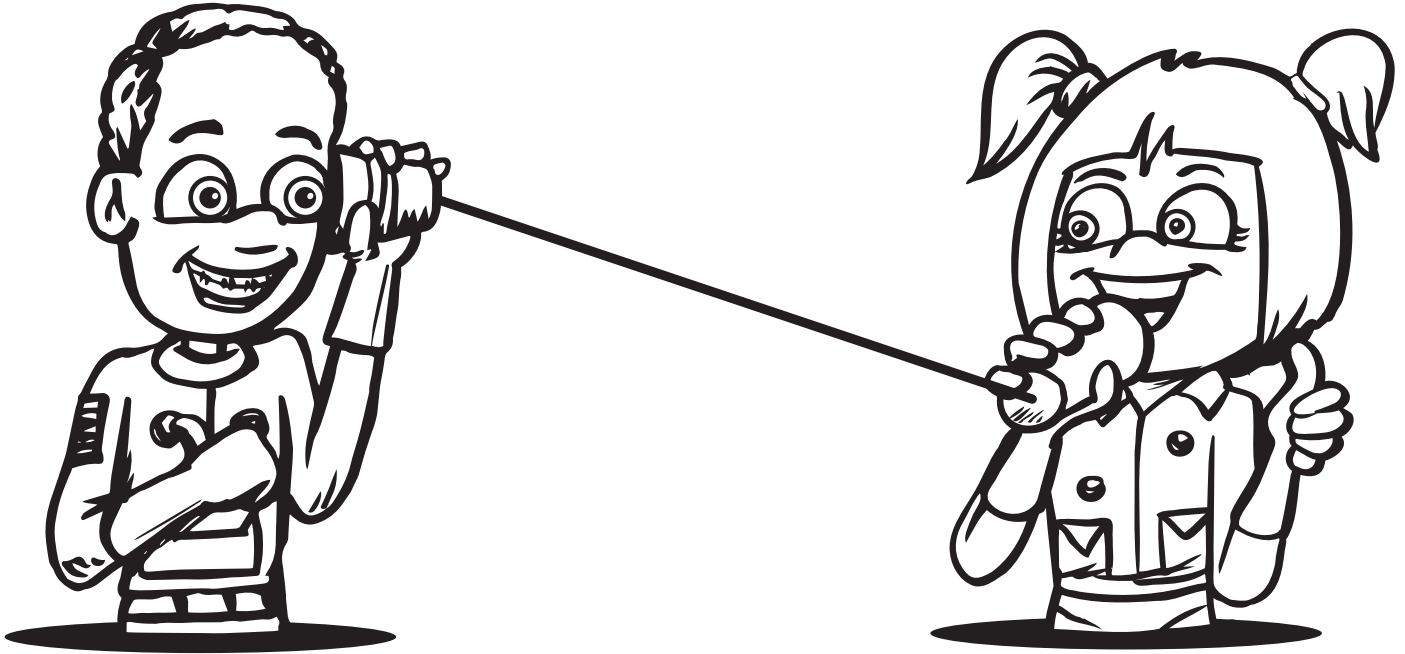
SP-2020-04-489-KSC

Engineers at Boeing and SpaceX imagined and designed **unique** crew vehicles that can transport astronauts to the International Space Station.



# Vv

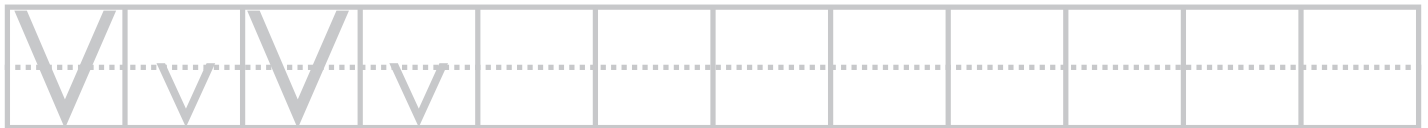
for vibration



Hey kids, try your hand at the  
Astro-Not-Yets: Sound on a String Activity:

[www.nasa.gov/stem/ccp](http://www.nasa.gov/stem/ccp)

vibration



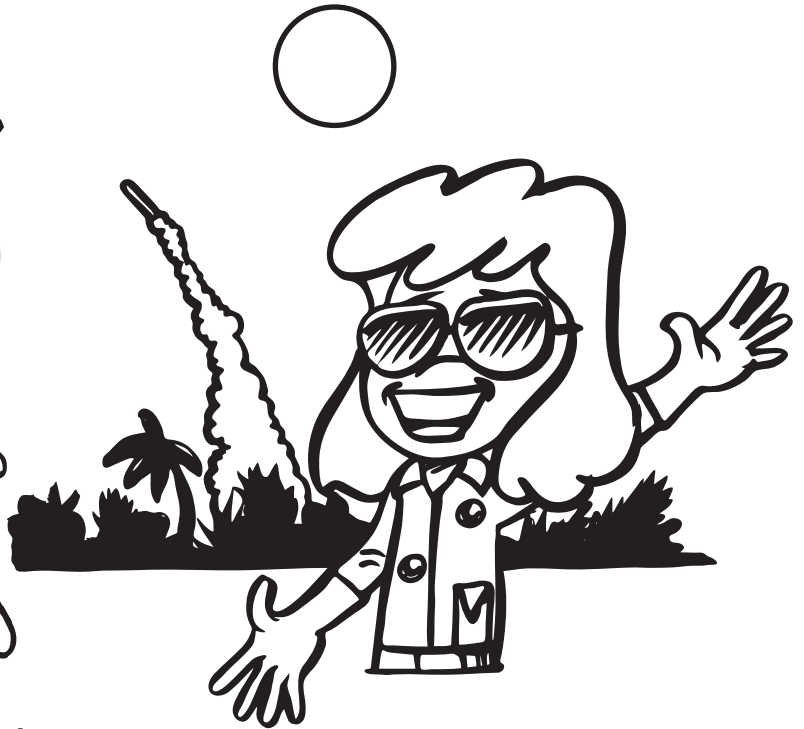
COMMERCIAL  
**CREW**

Sound is a **vibration** that travels through the air and can be heard when it reaches a person's or animal's ear.



# Ww

for weather



weather

W	w	W	w						
---	---	---	---	--	--	--	--	--	--

COMMERCIAL  
**CREW**

NASA monitors the weather before every rocket launch. What's the weather like in your neighborhood? Is it GO for launch?



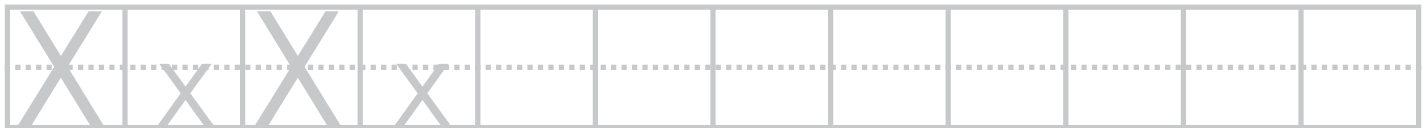
# Xx

for X-ray

National Aeronautics and  
Space Administration



x-ray



COMMERCIAL  
**CREW**

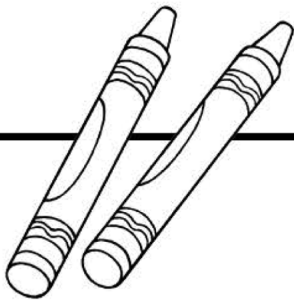
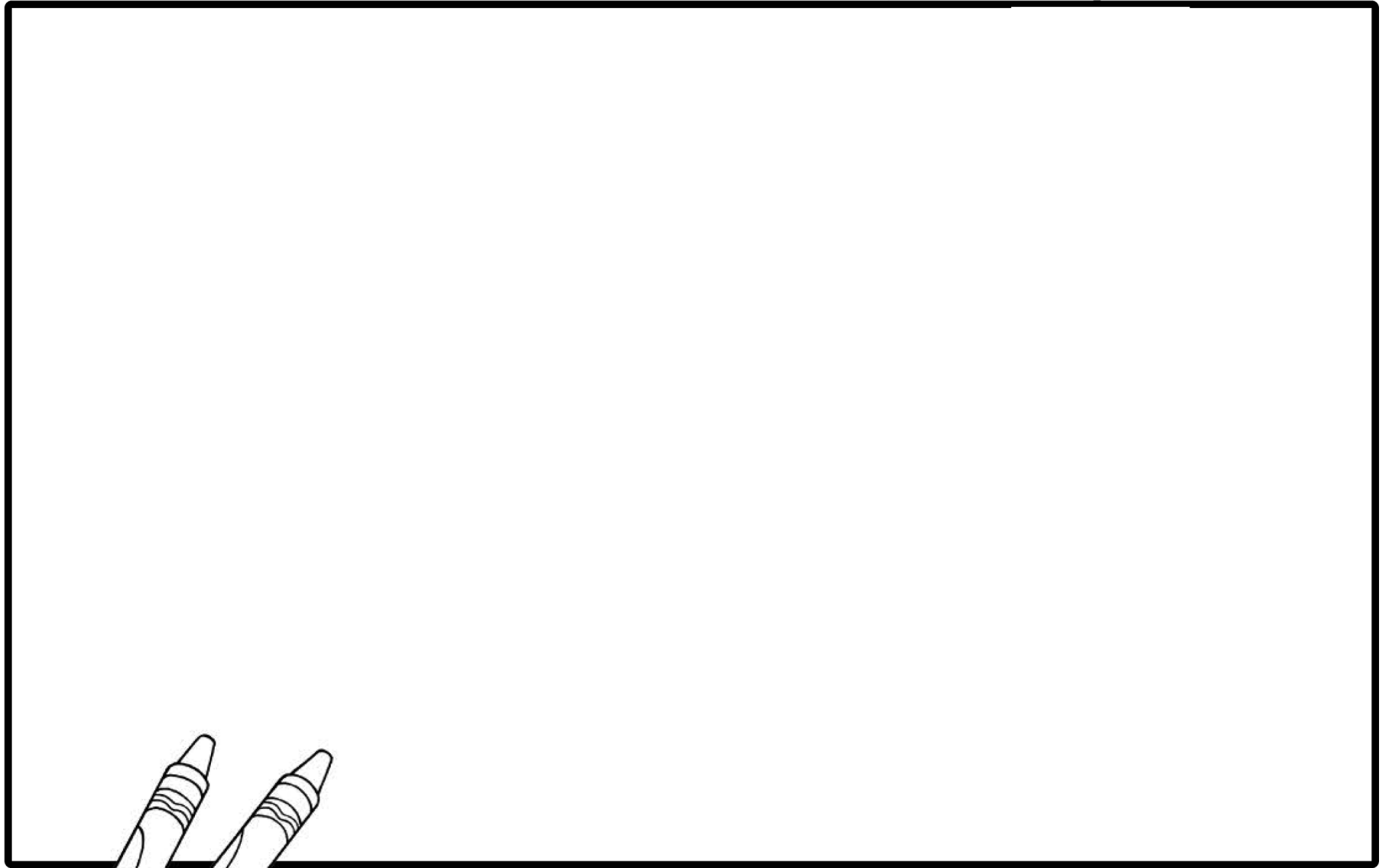
[www.nasa.gov](http://www.nasa.gov)

SP-2020-04-492-KSC

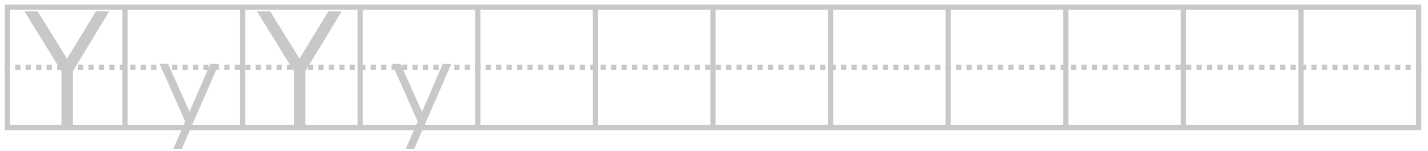
An **X-ray** can be used to examine bones on Earth and in space. Astronauts must maintain a healthy diet and exercise because bones can weaken in space.

# Yy

National Aeronautics and  
Space Administration



you



COMMERCIAL  
**CREW**

[www.nasa.gov](http://www.nasa.gov)

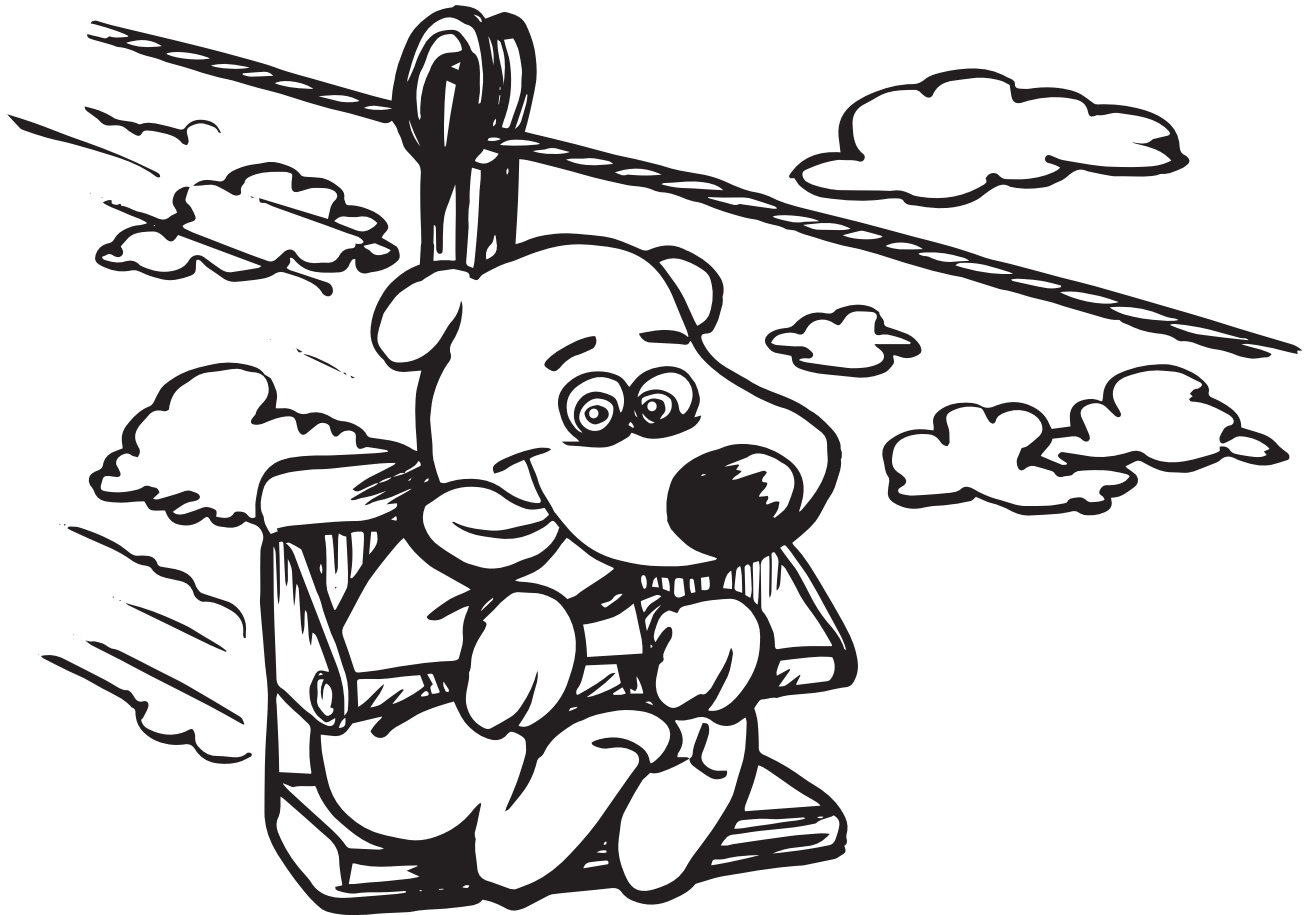
SP-2020-04-493-KSC

NASA needs **you**! Engineers design and build things to solve problems on Earth and in space. Think of a problem **you** want to solve and draw yourself as an engineer!

# Zz



for Zipline



Zipline

Zz Zz

COMMERCIAL  
**CREW**

In the event of an emergency, astronauts can use an escape system, that works like a **zipline**, to quickly exit the launch pad.