

National Aeronautics and Space Administration



ABC's

of

SCAN

Space Communications and Navigation

An ABC journey through space.





This Book Belongs To:

---



**A a**

**A is for Artemis**



NASA's program to land the first woman  
and the first person of color on the Moon.



B b

B is for beam





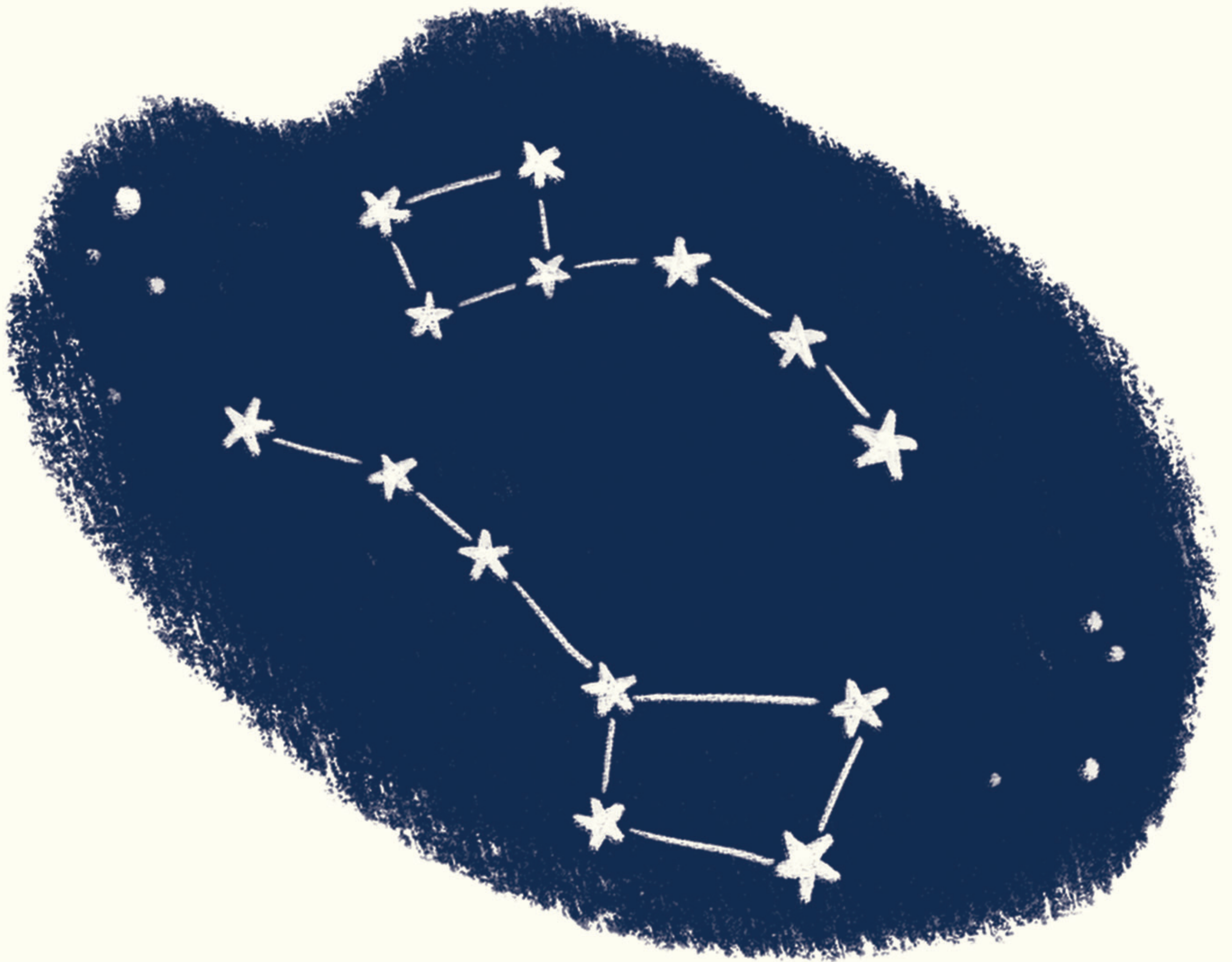
*A string of light.*



Cc

C is for constellation





*A constellation is a group of stars.*



D d

D is for data





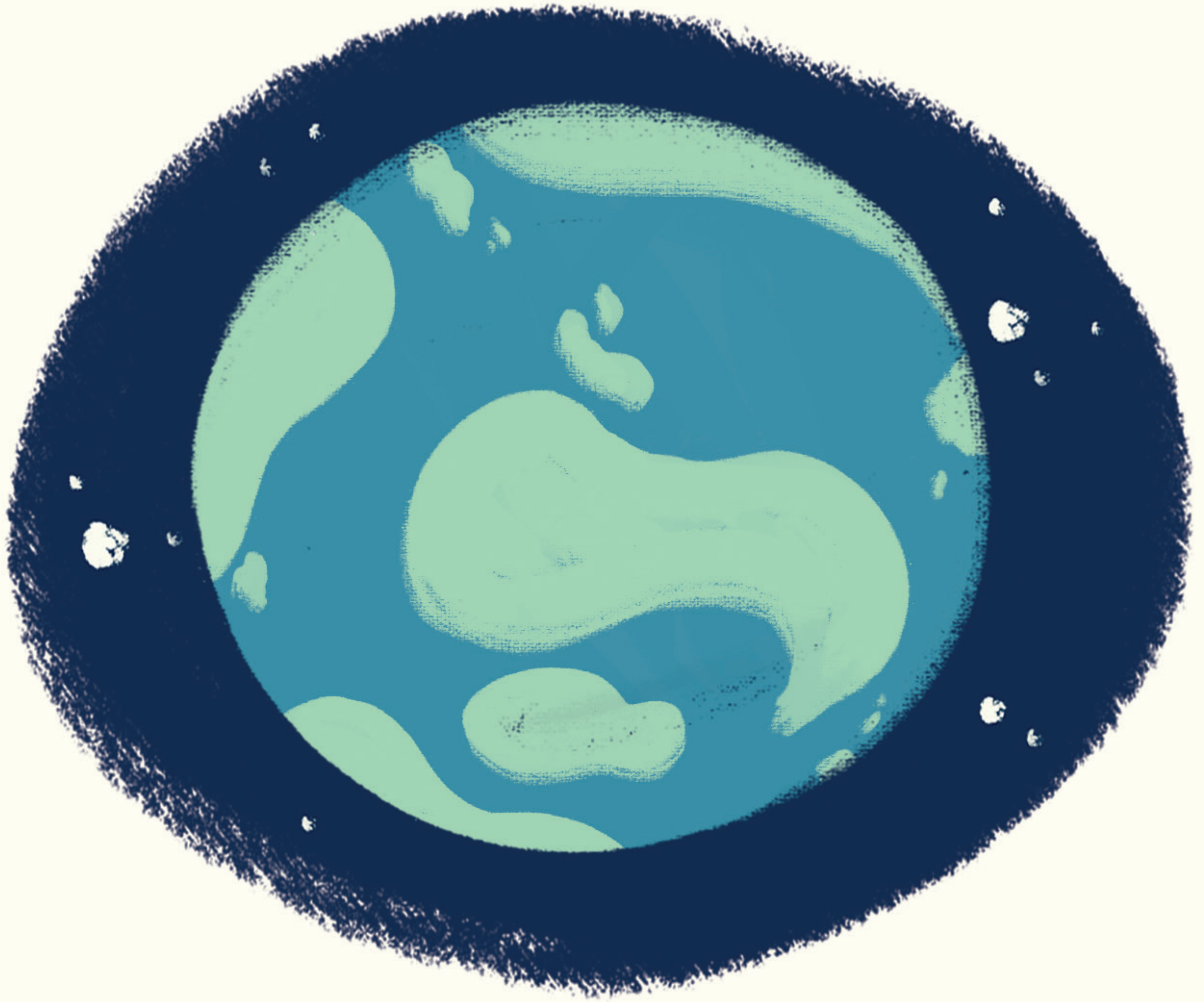
*A collection of information.*



E e

E is for Earth





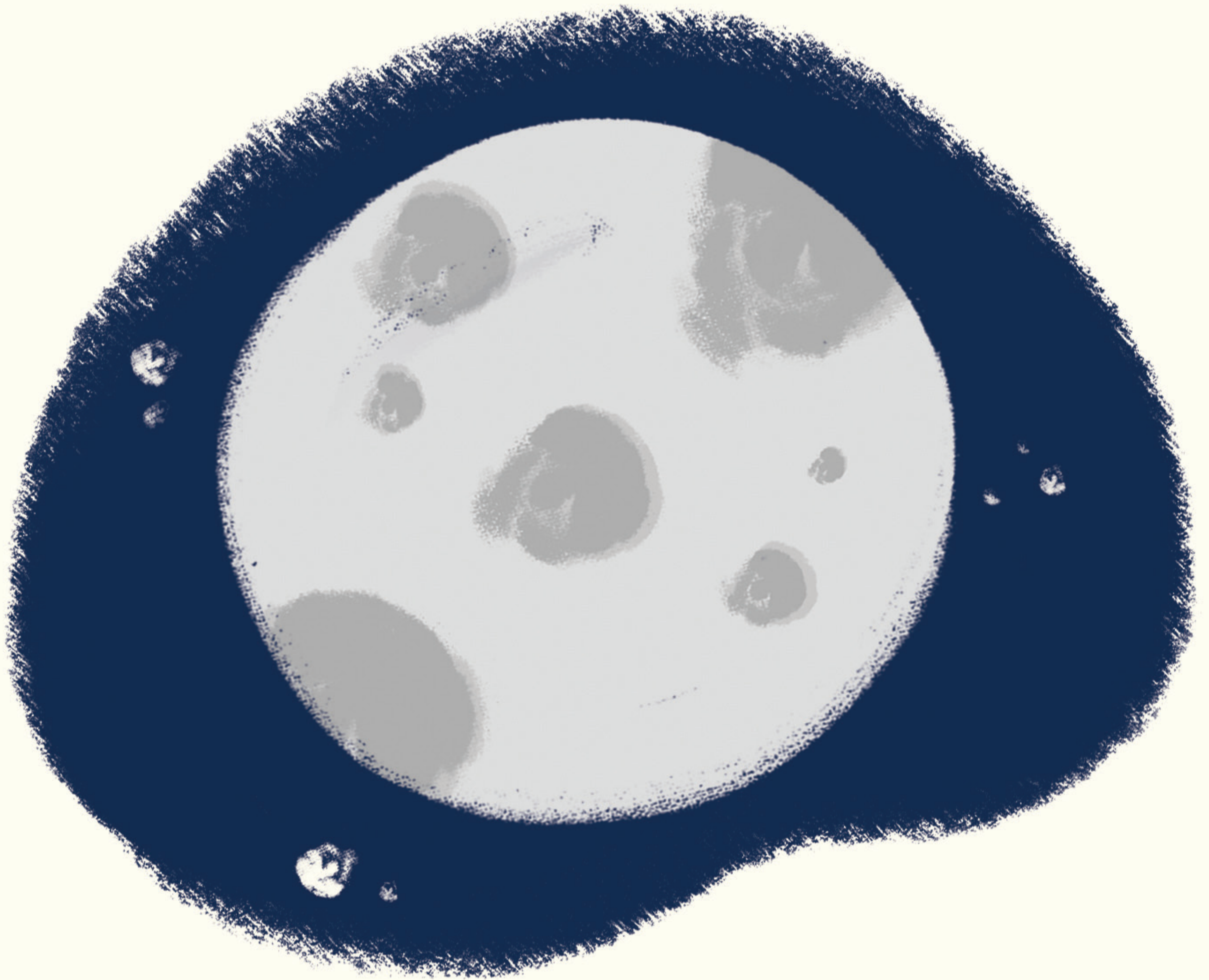
*The planet we all live on.*



F f

F is for full moon





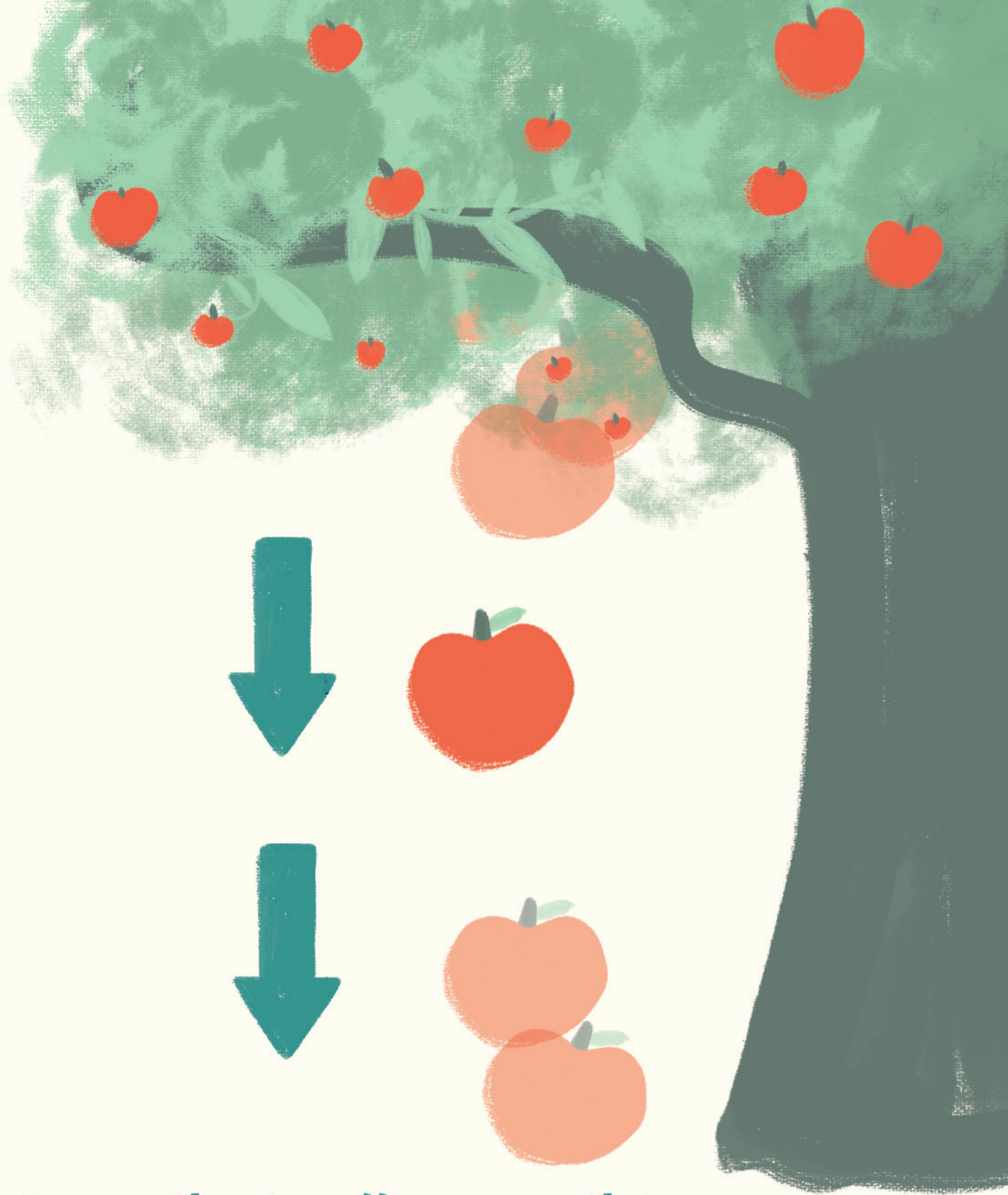
When the entire front of the Moon is visible from Earth, this happens once a month.



G g

*G is for gravity*





The force that pulls everything  
on Earth down.



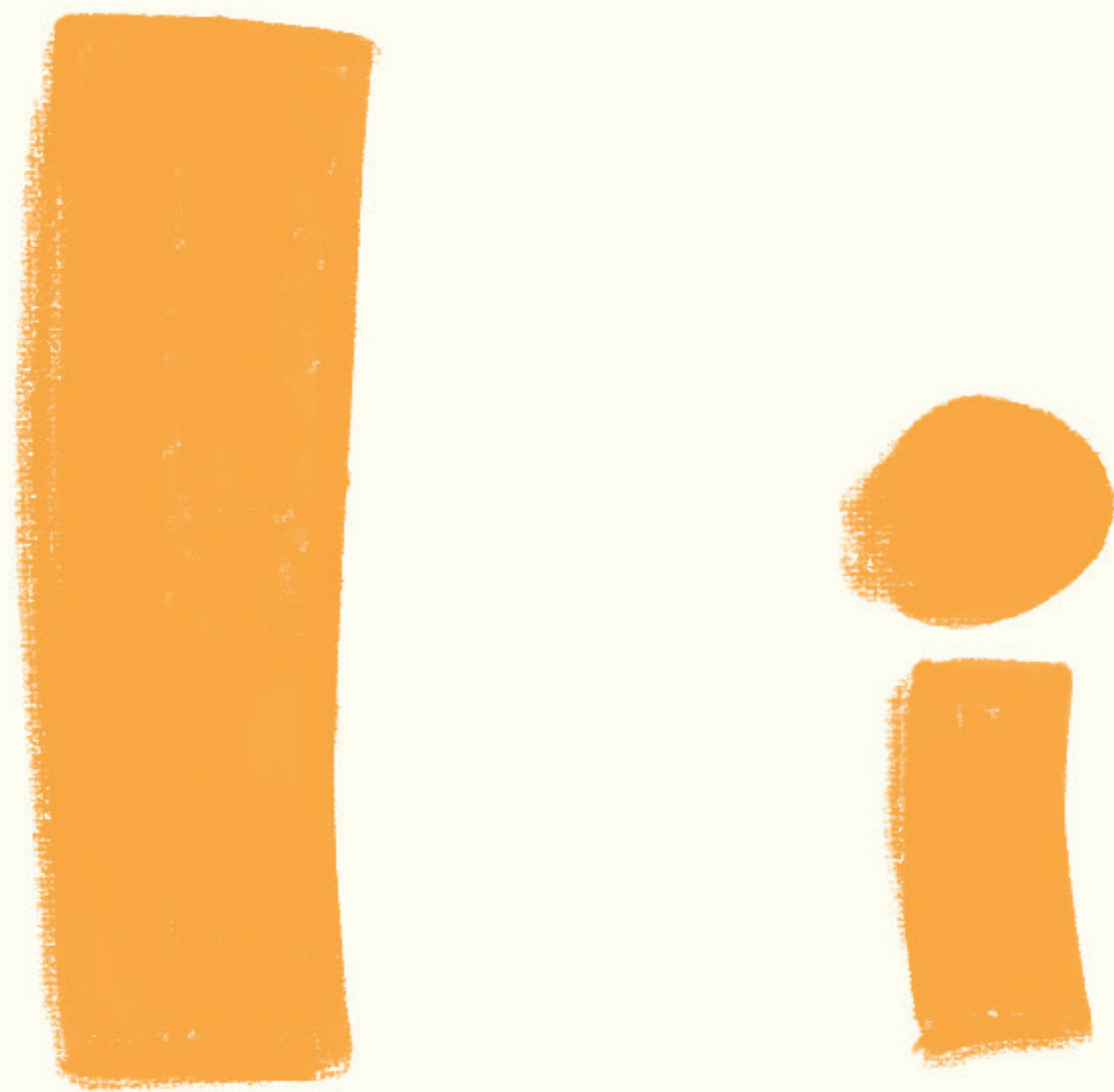
H h

H is for Hubble Space  
Telescope



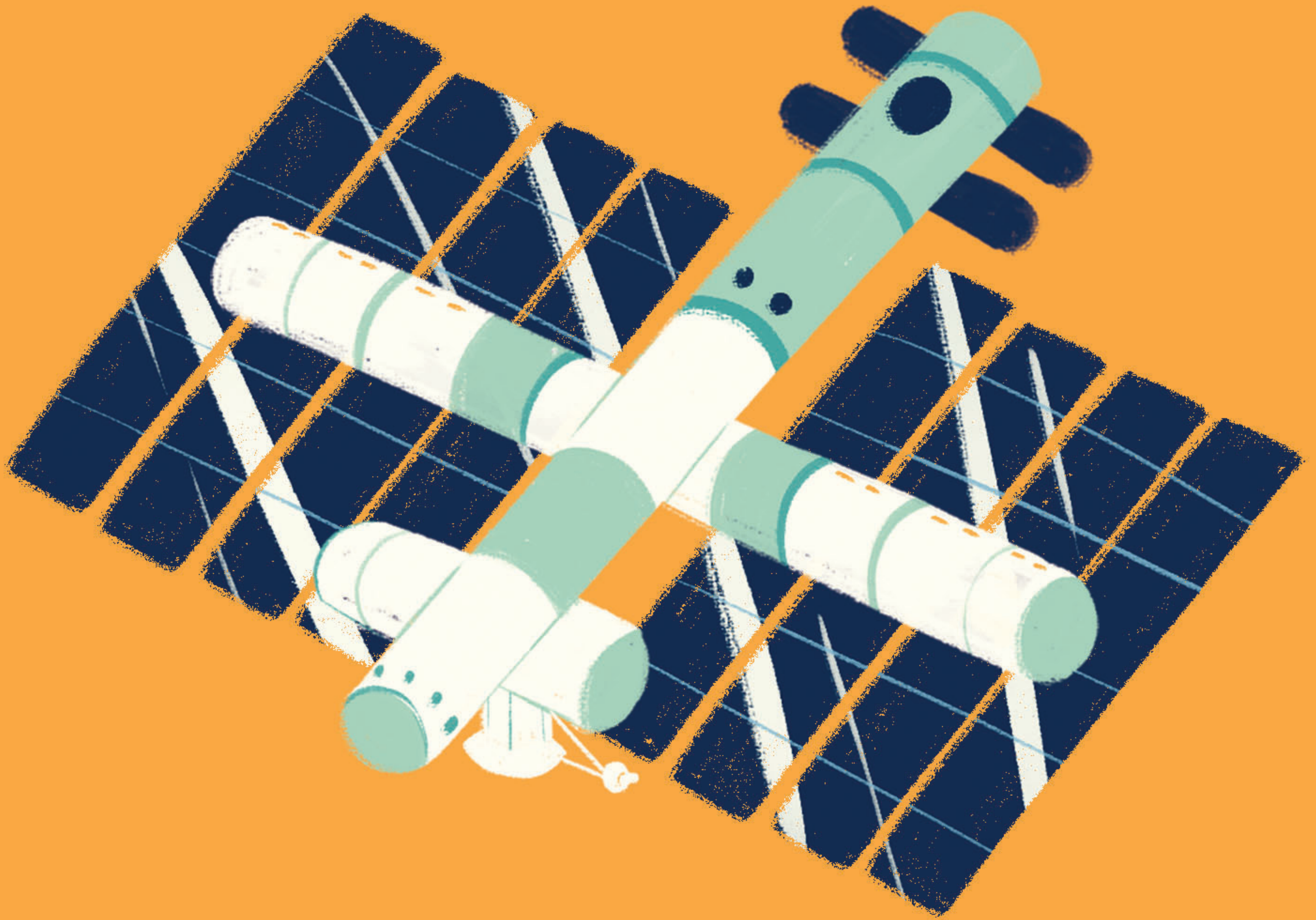


A NASA telescope that sends images  
back from space.



I is for International  
Space Station





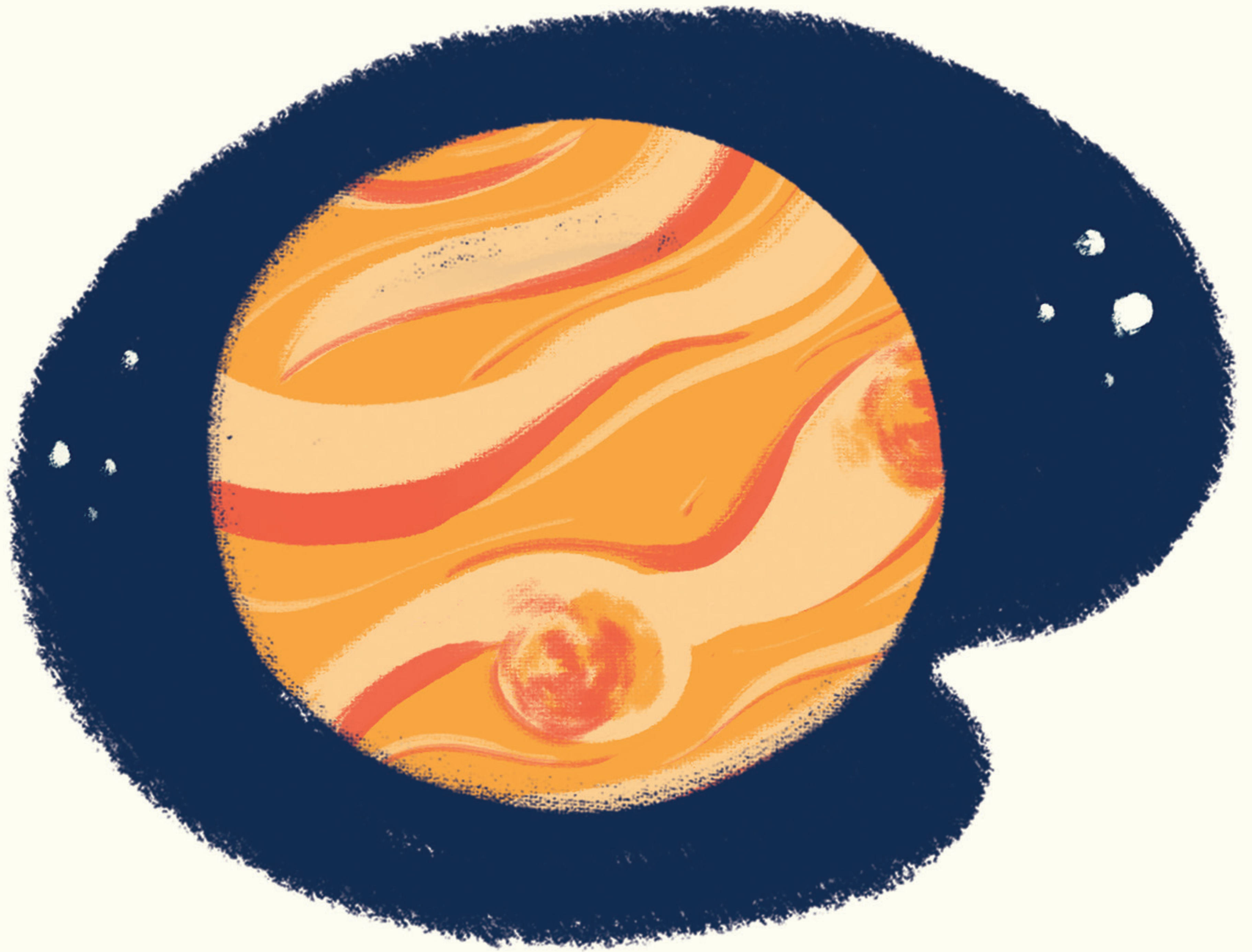
A large spacecraft that circles the Earth  
and is home to astronauts.



J j

J is for Jupiter





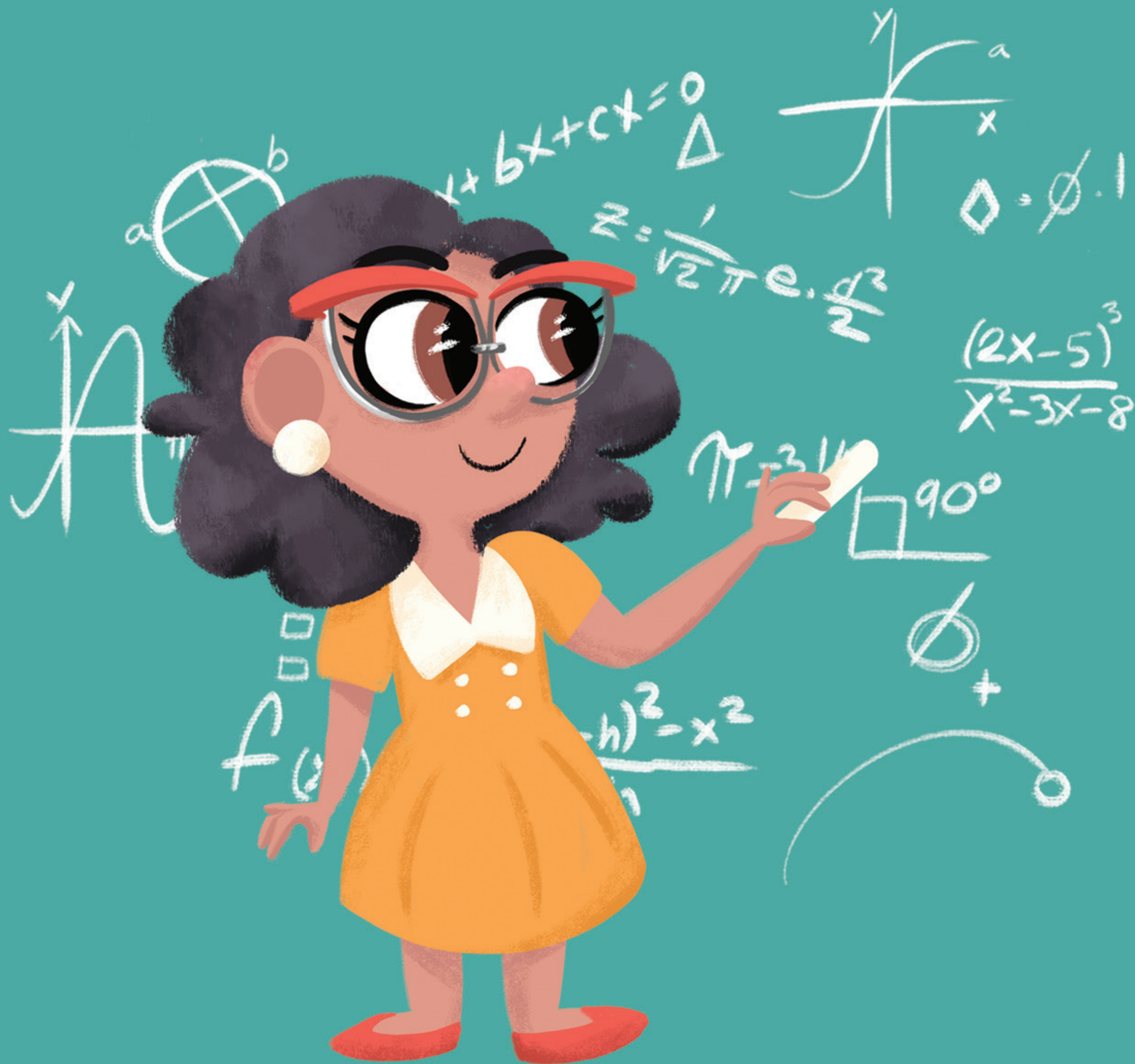
*This gas giant is the fifth planet from the Sun.*



**K k**

**K is for Katherine  
Johnson, Ph.D.**





A NASA scientist who used math to help put astronauts on the Moon.



L I

L is for launch





When an object blasts off from the ground,



M m

M is for Moon





The large round object that circles the Earth and is brightest at night.



**N n**

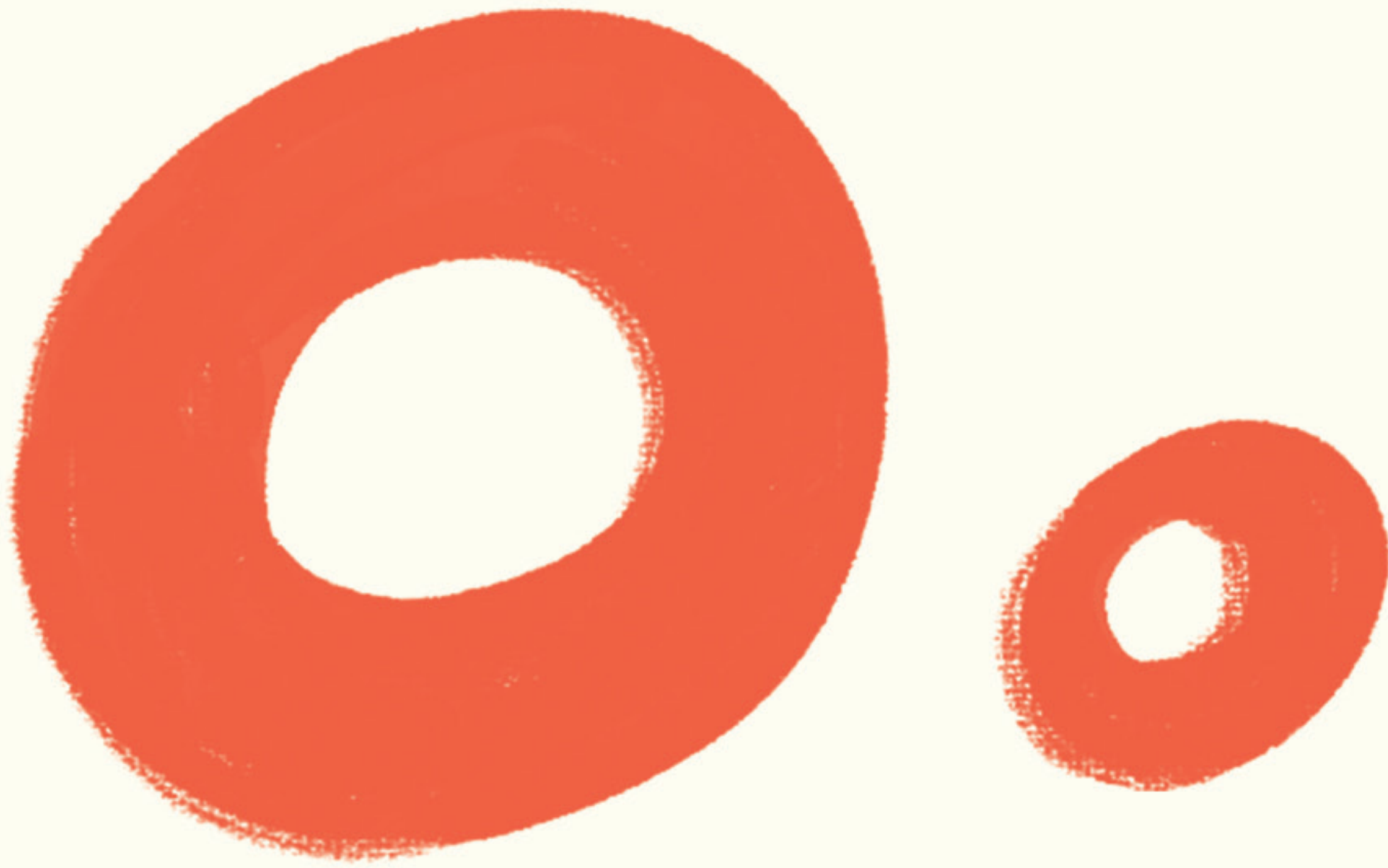
**N** *is for navigation*





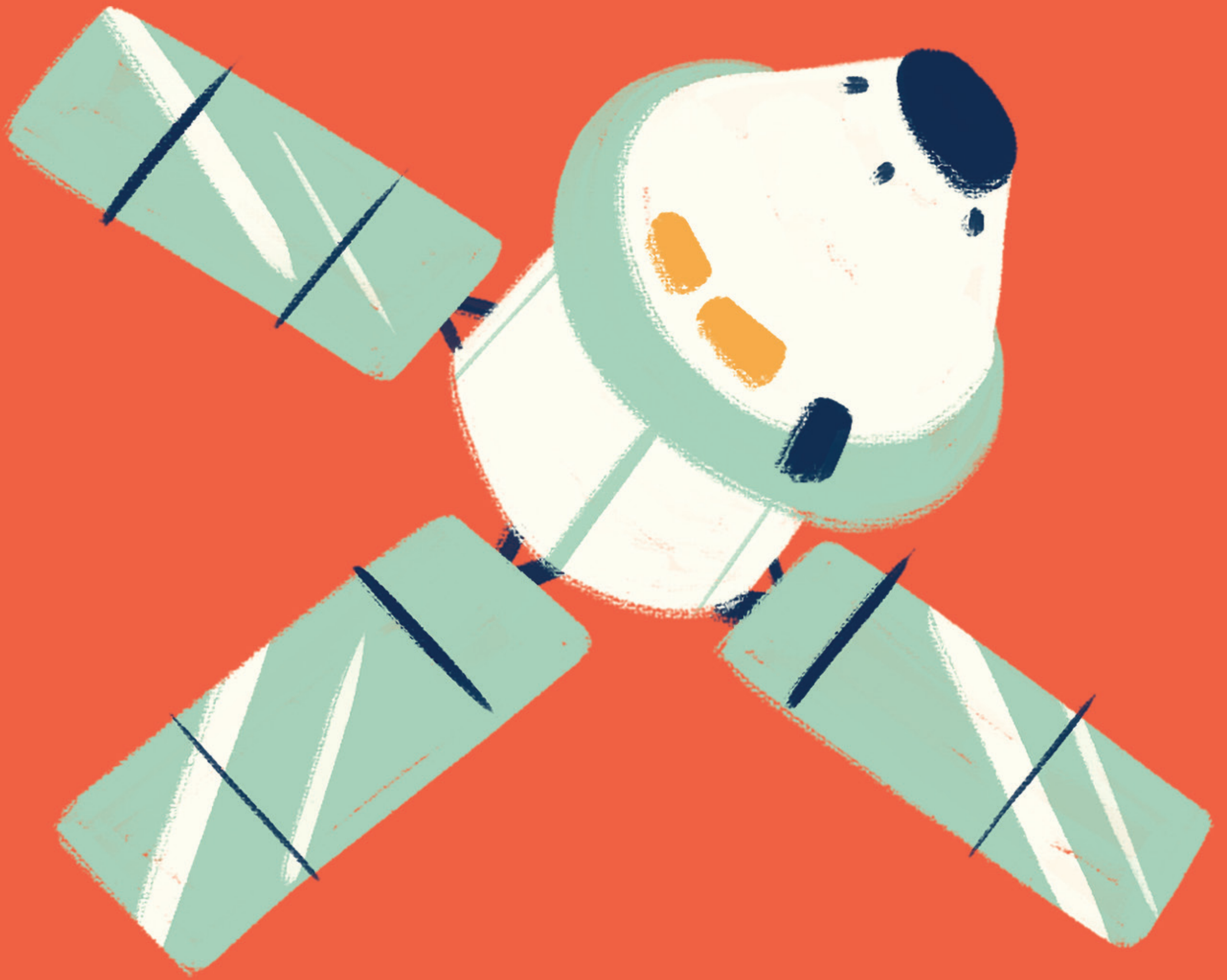
*Finding direction from one location to another.*





*0 is for Orion*





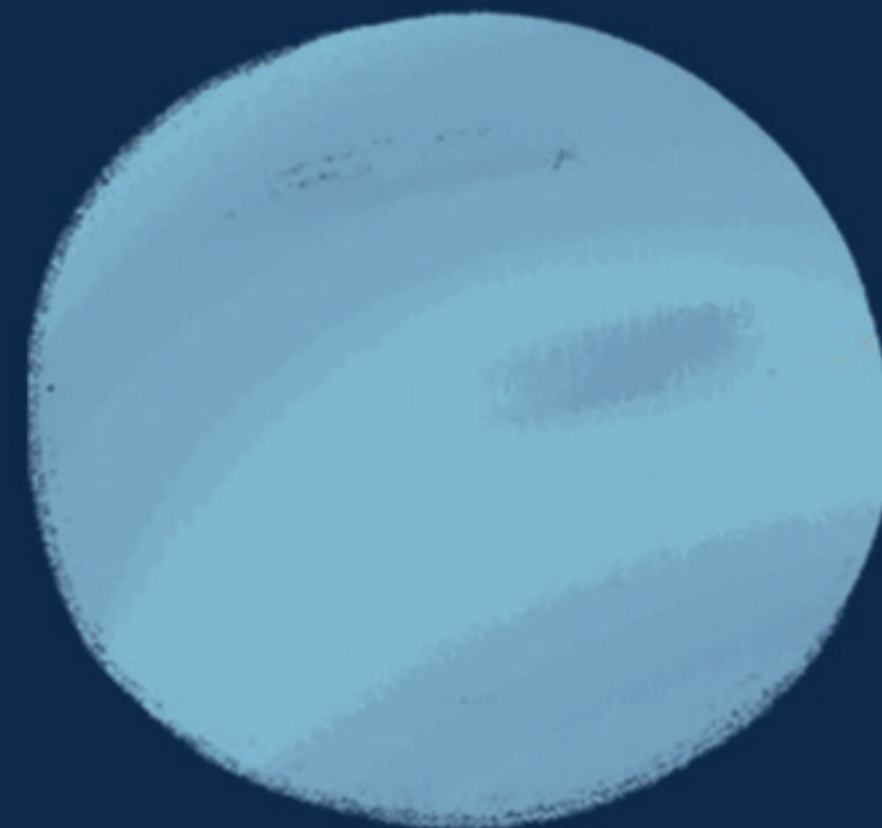
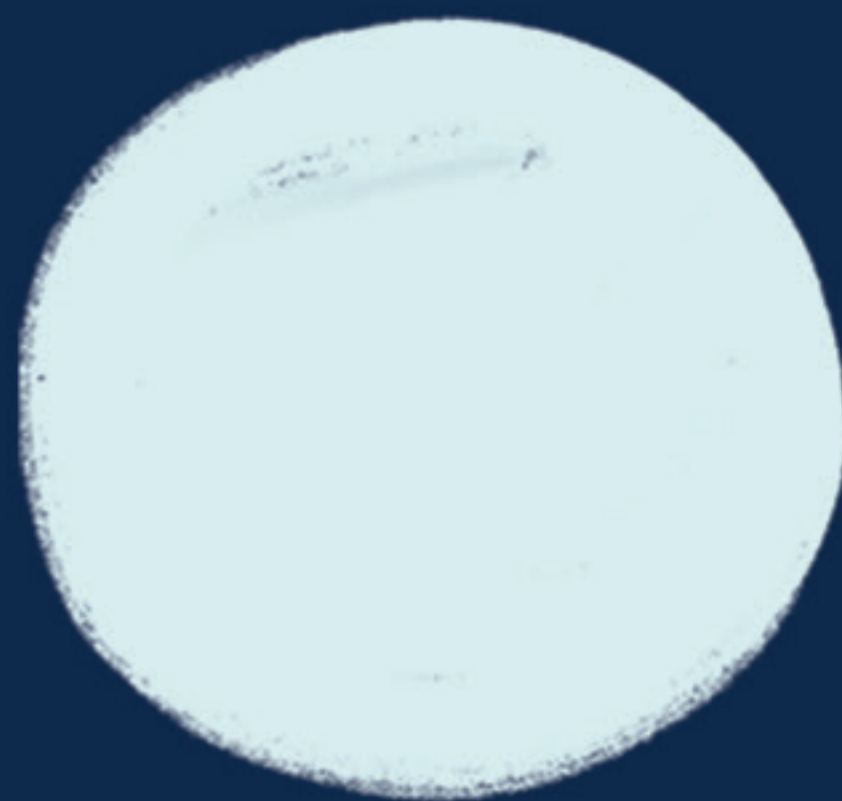
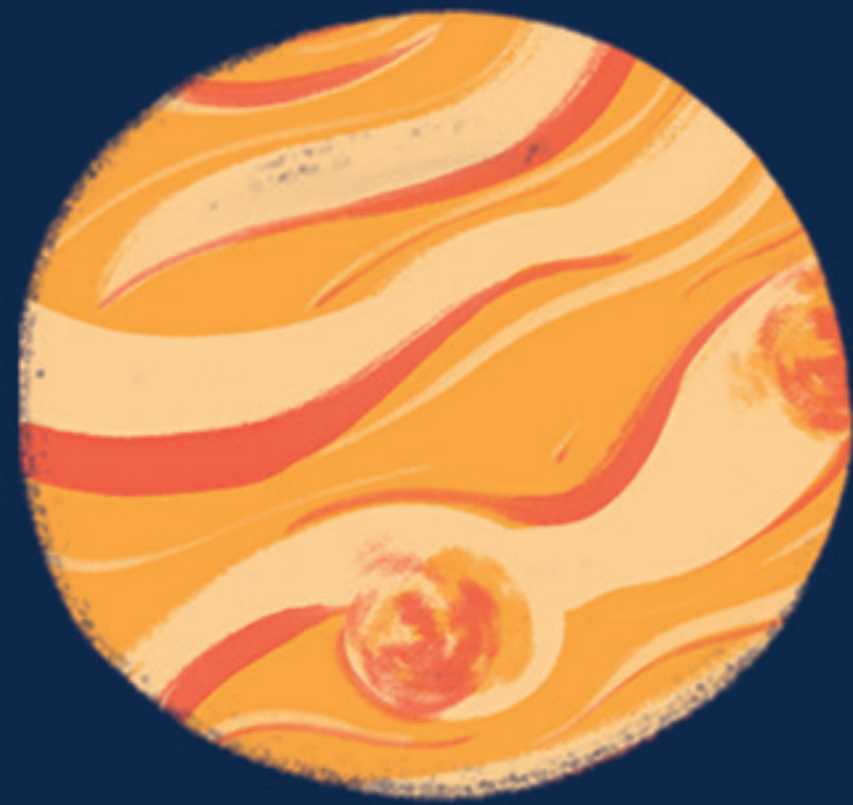
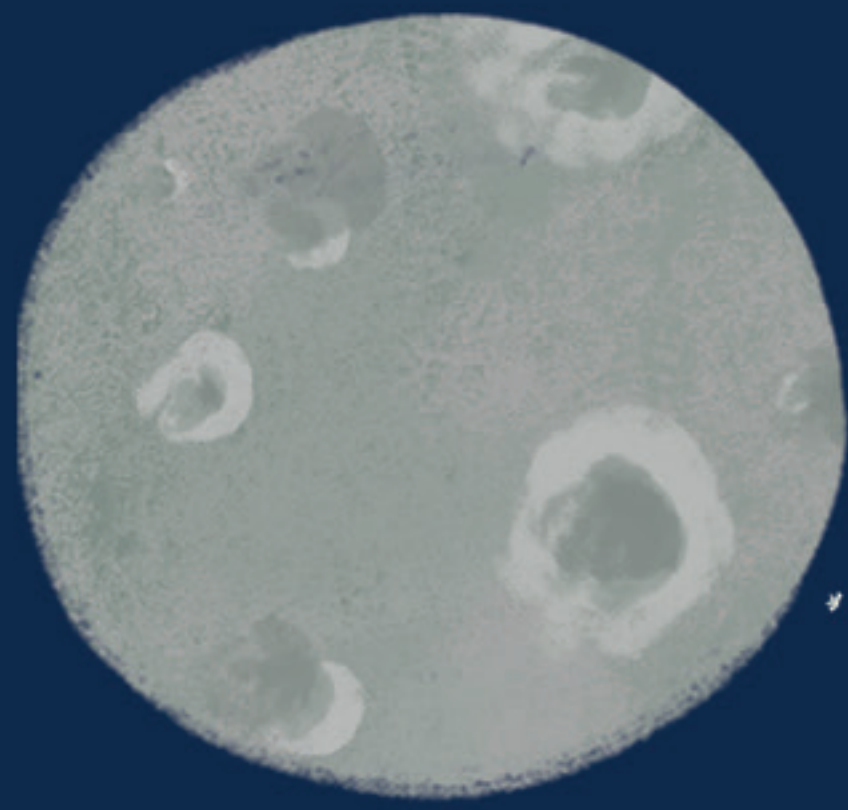
A spacecraft that will take  
astronauts to the Moon and beyond.



P p

P is for planets





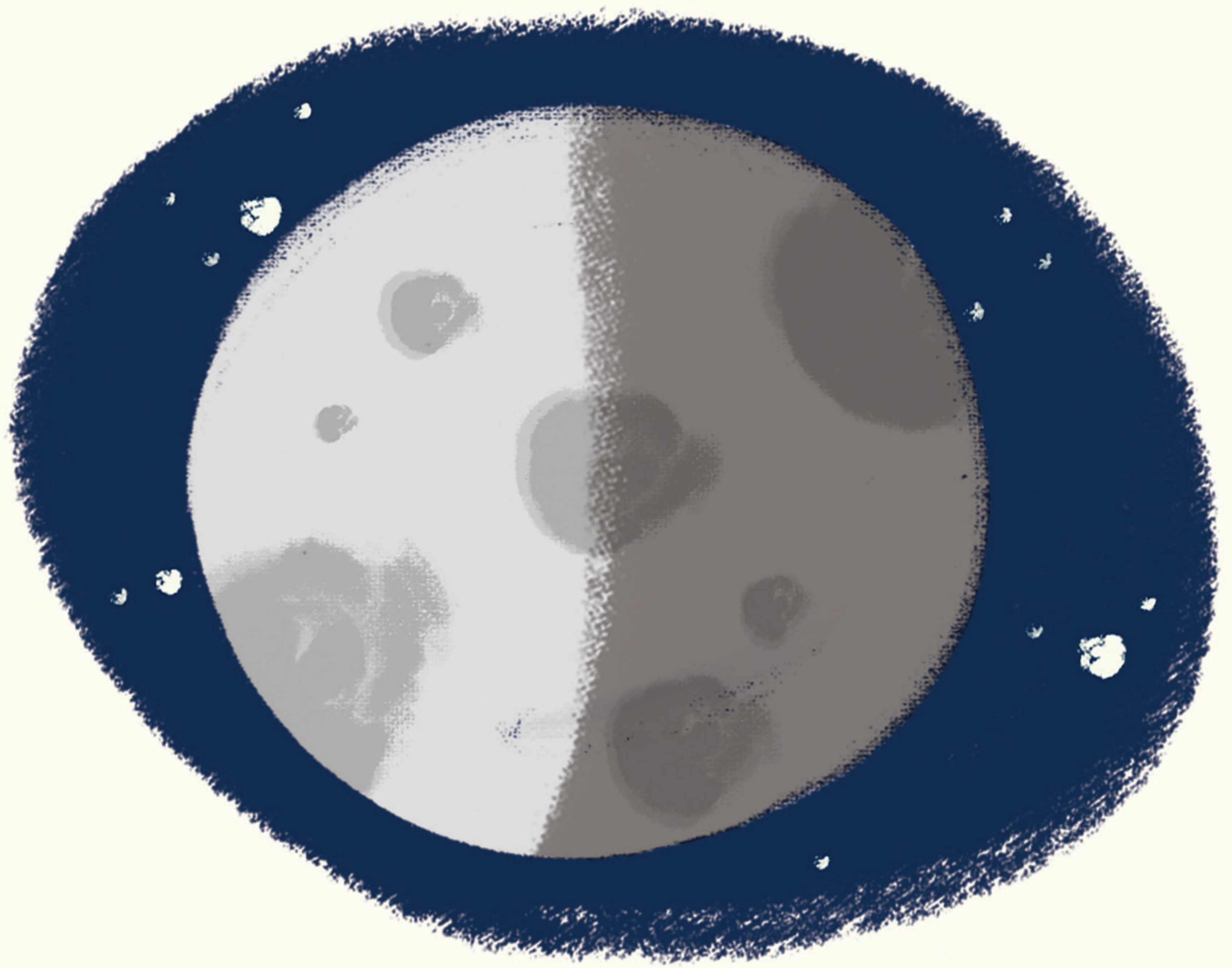
Very large objects that go around the Sun.



Q q

Q is for quarter moon





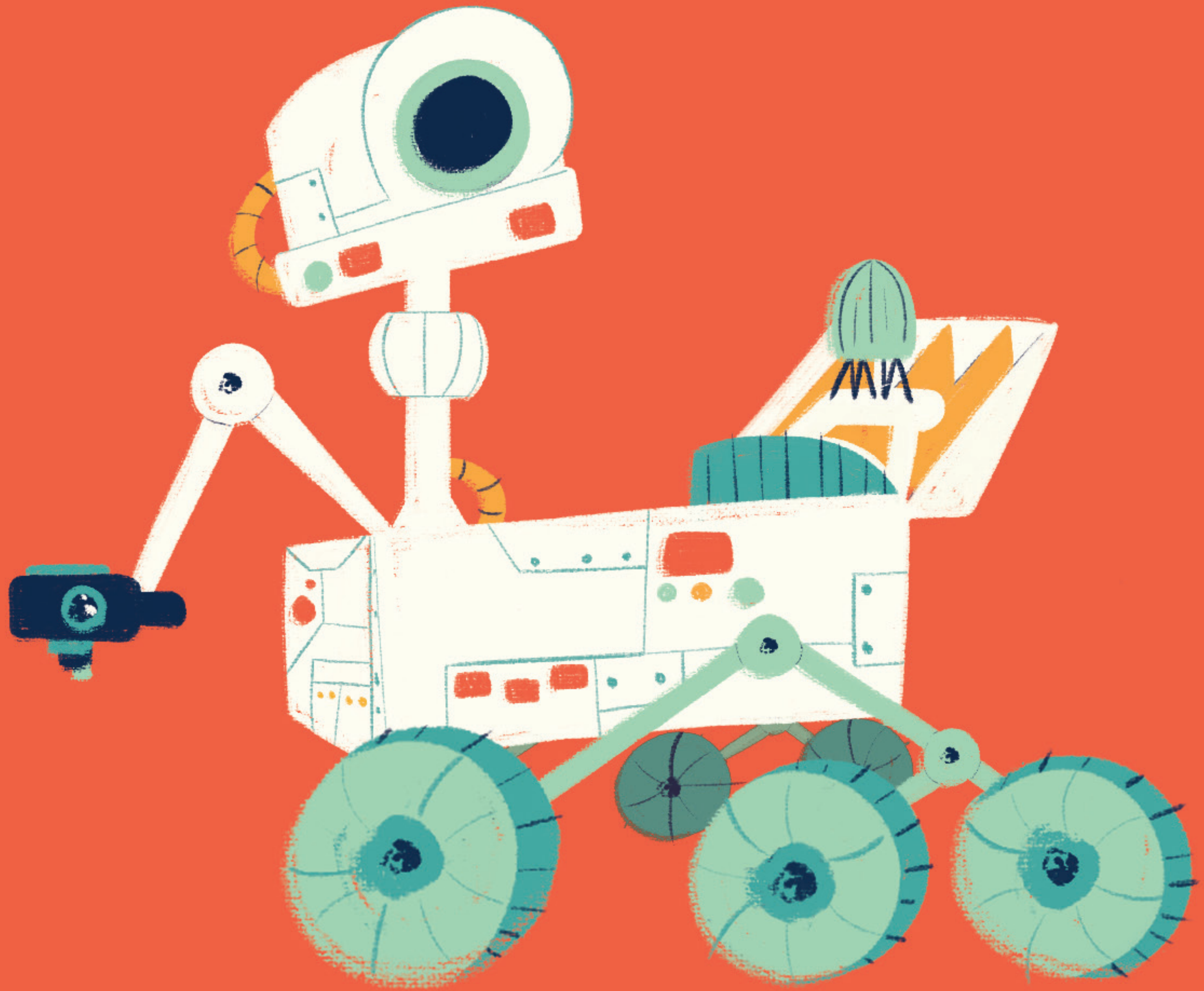
*When half of the Moon is visible in the sky,*



R r

R is for rover





A vehicle that travels on the surface of a planet or moon collecting data.



S s

S is for spacecraft





A vehicle or machine designed to fly in  
outer space.



T t

T is for telescope





A tool designed to make distant objects  
look closer.



U u

U is for universe





*The universe includes all living things,  
planets, stars, and even galaxies.*



V v

V is for visible light





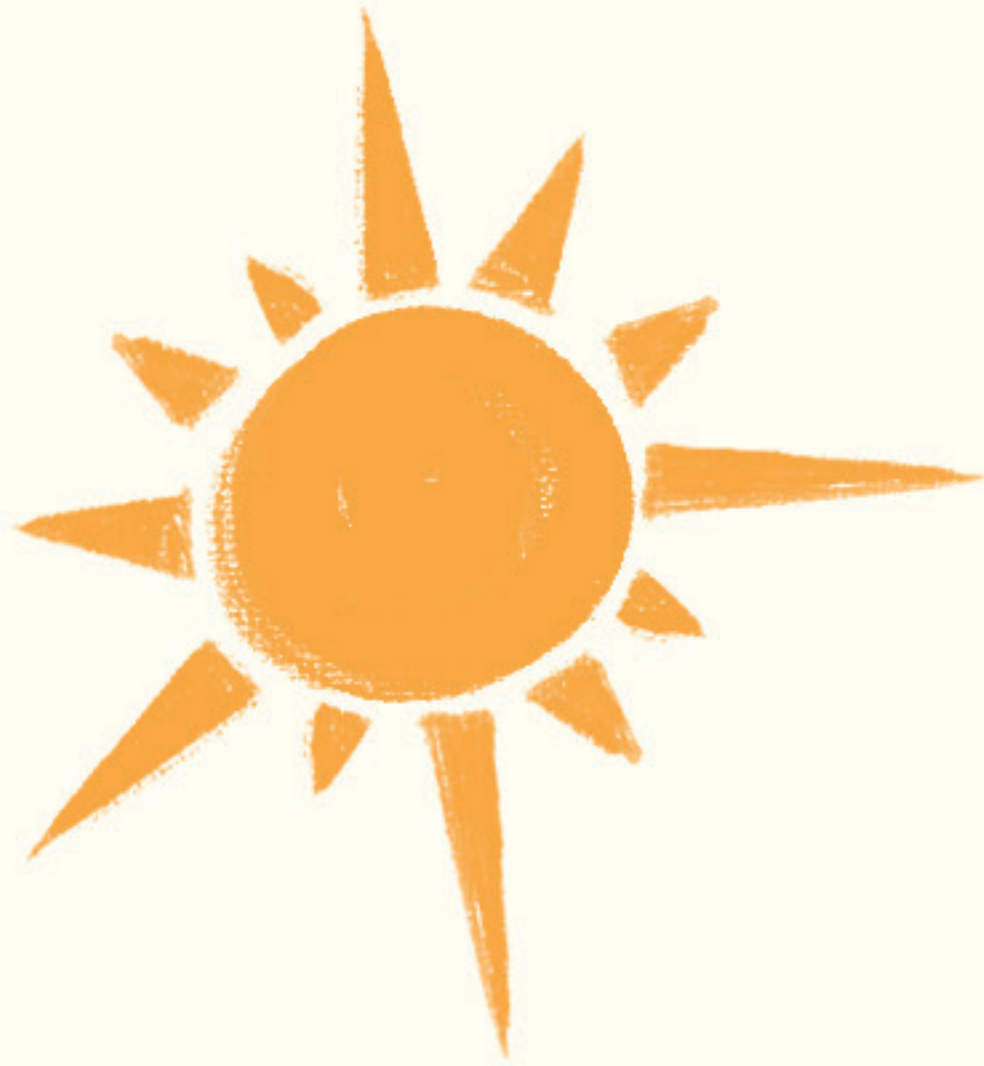
All light we can see using just our eyes.



W w

W is for weather





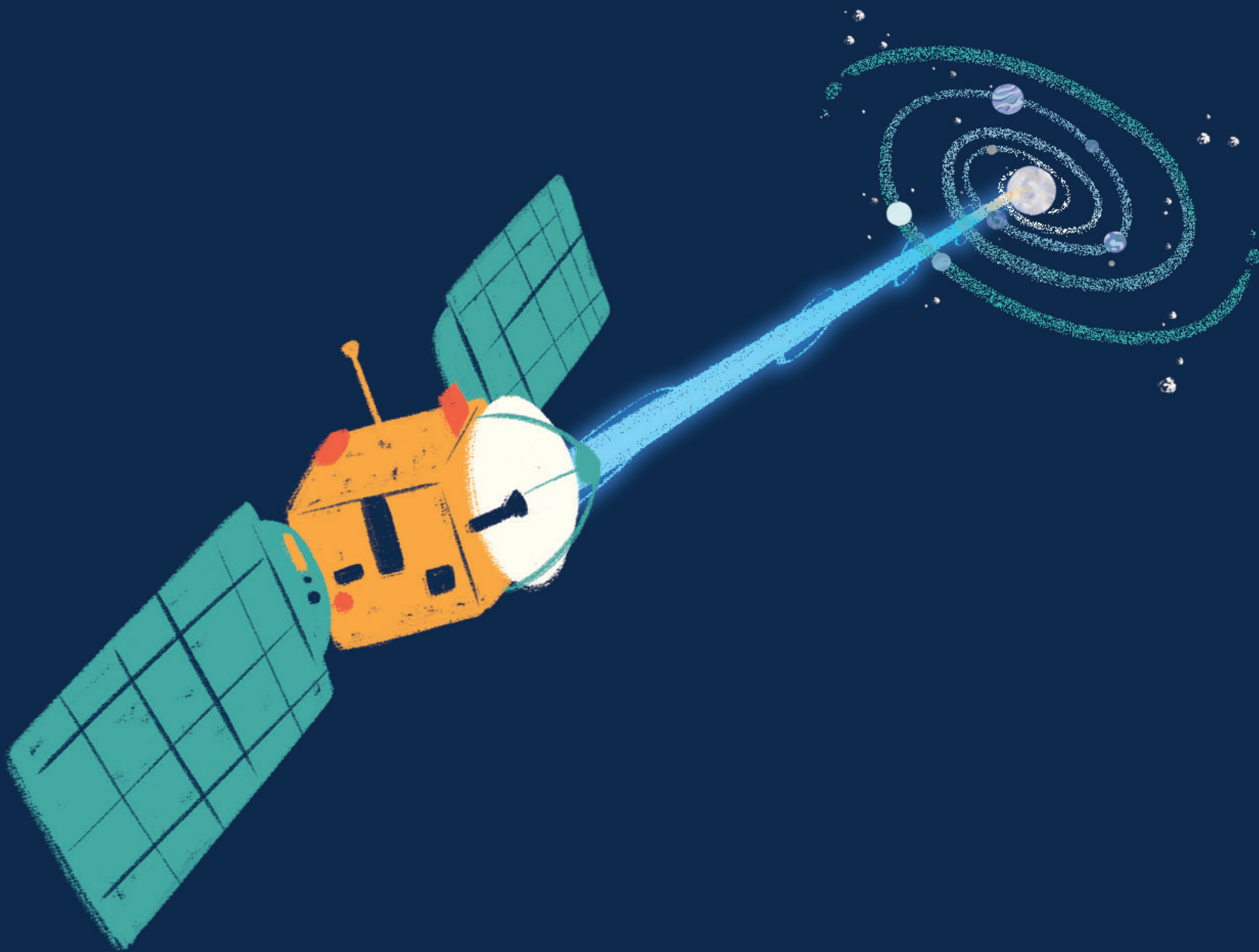
Satellites are used to predict the  
daily weather.



A large, bold, blue uppercase letter 'X' with a slightly textured, hand-drawn appearance.A smaller, bold, blue lowercase letter 'x' with a slightly textured, hand-drawn appearance.

**X is for X-ray**





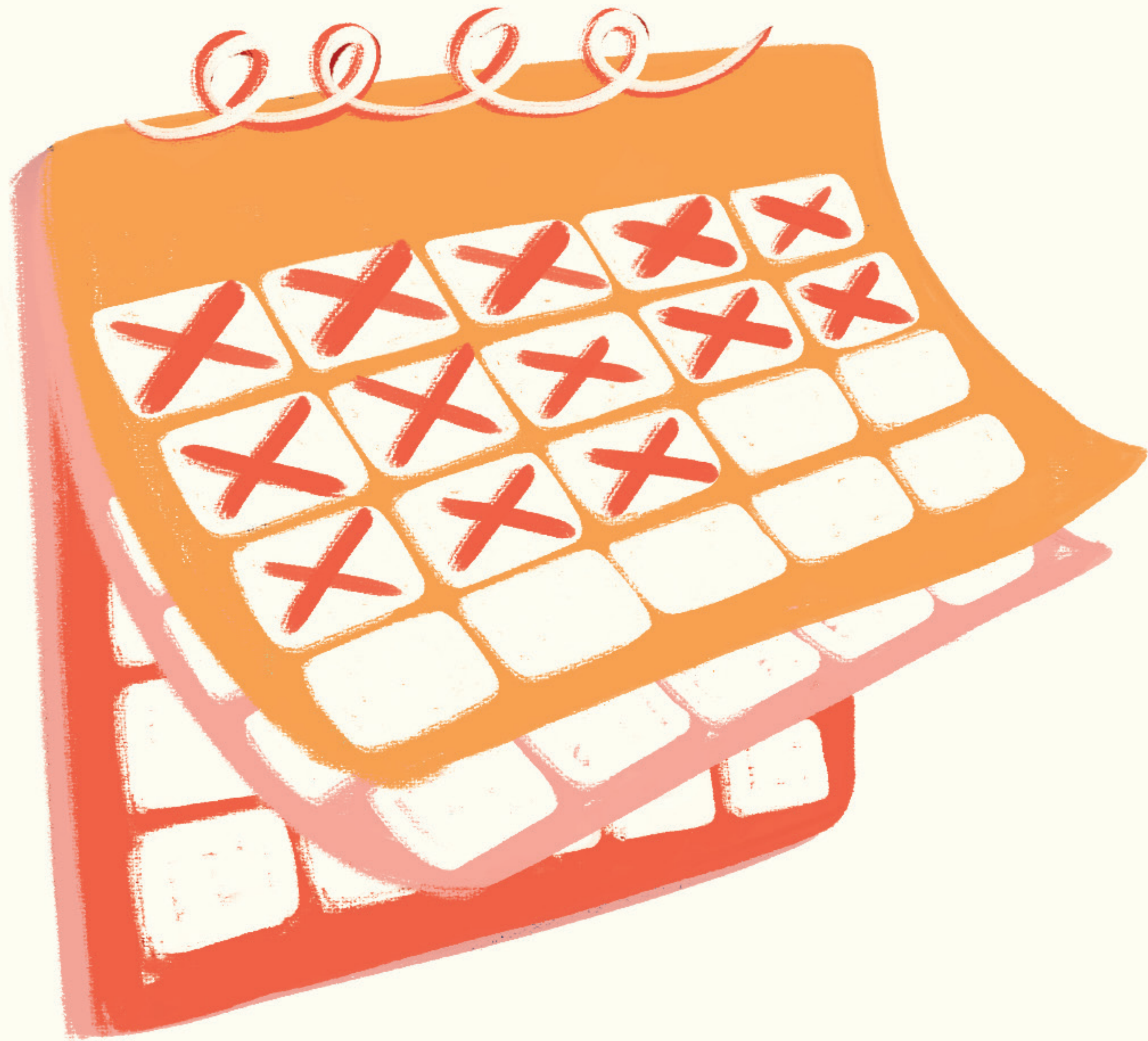
Spacecrafts use X-ray to view galaxies  
and other things in the universe.





Y is for year





The amount of time it takes a planet  
to circle the Sun,



Z z

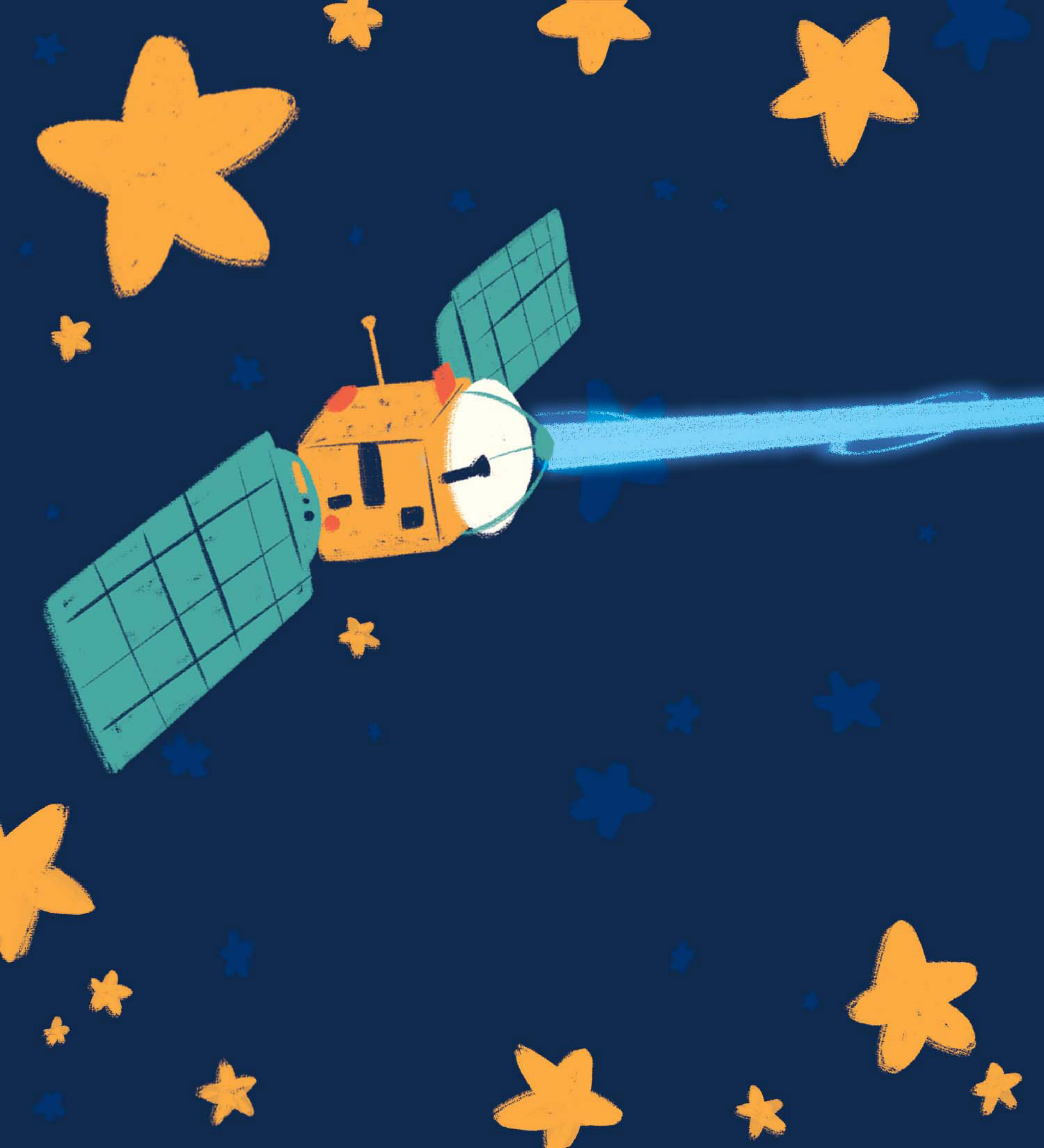
Z is for zero gravity





*It is also called microgravity because there is a small amount of gravity in space.*







# SCaN Student Zone



Explore more activities by scanning  
the QR code!









The Space Communications and Navigation (SCaN) Program has antennas around the world, and satellites in space to help guide and send information for all NASA missions. Astronauts, mission controllers, and scientists rely on SCaN to send messages from Earth to space and back to communicate.

National Aeronautics and Space Administration

**Glenn Research Center**  
21000 Brookpark Road  
Cleveland, OH 44135

[www.nasa.gov](http://www.nasa.gov)