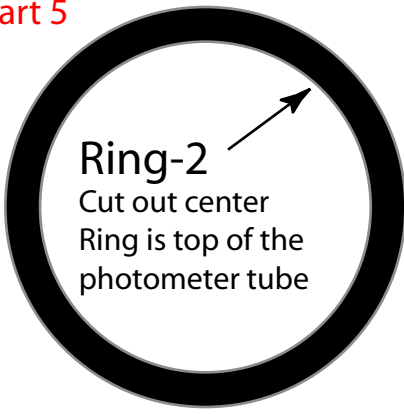
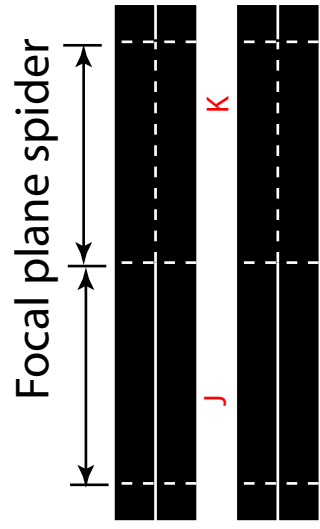


# Photometer Parts

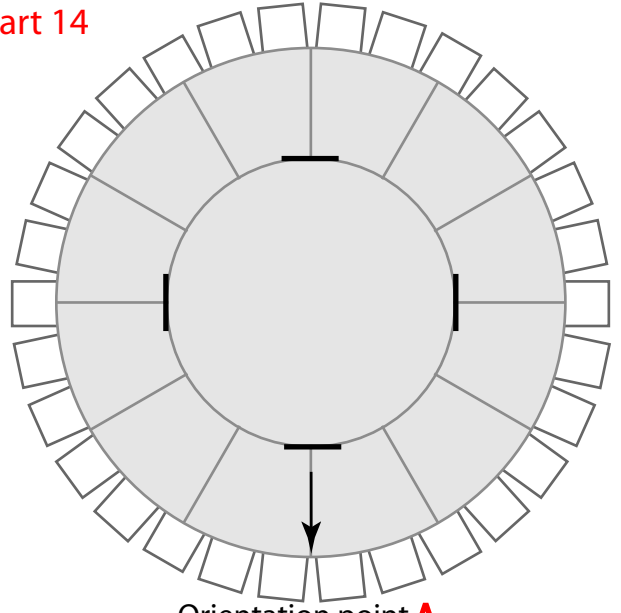
Part 5



Parts 6



Part 14



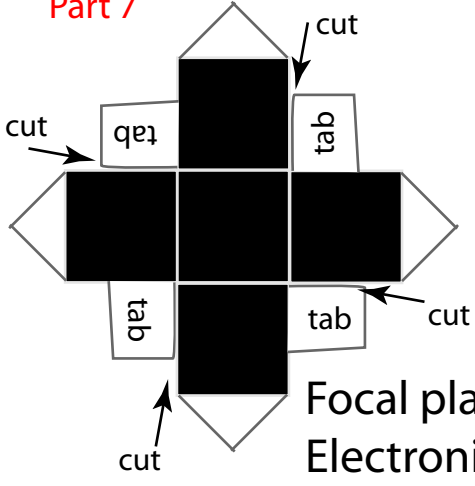
Orientation point **A**  
Photometer Base

Part 13



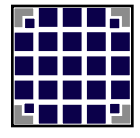
Collar for between photometer and spacecraft

Part 7



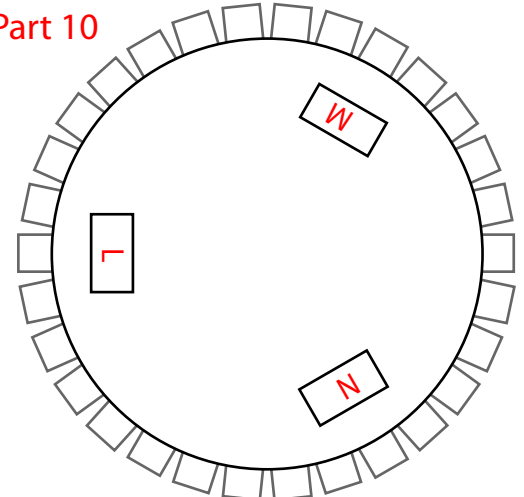
Focal plane  
Electronics box

Part 8



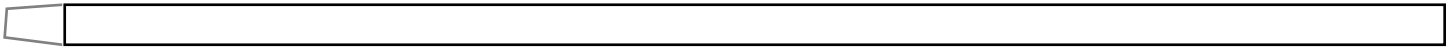
CCD Focal plane

Part 10



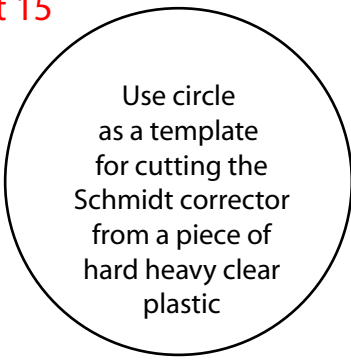
Mirror back plate

Part 12



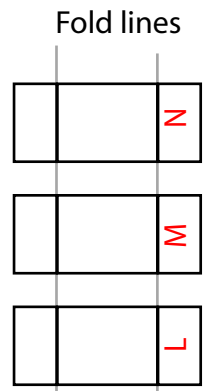
Mirror edge

Part 15



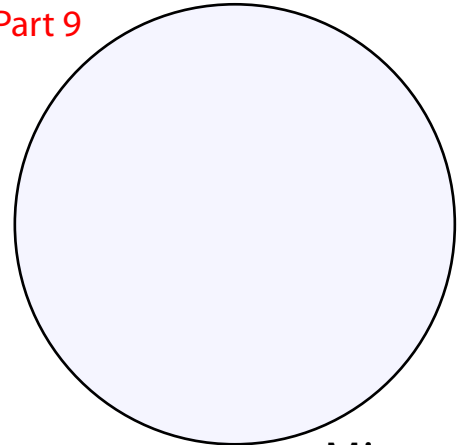
6 inch scale

Parts 11



Mirror mounts

Part 9



Mirror

6 inch scale  
The scale is used to verify that the printer software is not scaling to a different size