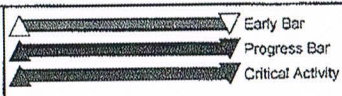


Predecessors	Activity ID	Activity Description	Cal ID	Orig Dur	Early Start	Early Finish	Total Float	Budgeted Cost	Successors	Calendar																
										2012	2013					2014		O	N	D	J	F	M	A	M	J
Stennis Waterline Project																										
Contract Administration																										
Contract Milestones																										
	0001	NTP	2	0	10OCT12		0		002*, 0003*, 0004*, 0005*	NTP																
0001*	0115	Contract Duration	2	545	10OCT12	07APR14	0			Early Completion																
0009*	1000	Early Completion	2	73	25JAN14	07APR14	0		116*	Project Completion																
1000*	0116	Project Completion	2	0		07APR14	0																			
Preconstruction																										
Submittals																										
0001*	0005	Submittal Approvals	1	30	10OCT12	20NOV12	38		0014, 0117*, 0118*	Submittal Approvals																
0001*	0002	Pre-Construction Submittals	2	90	10OCT12	07JAN13	34		0013	Pre-Construction Submittals																
0001*	0004	Drawing Submittals	2	90	10OCT12	07JAN13	34		0013	Drawing Submittals																
0005*	0117	Material Procurements (Pipe)	2	28	21NOV12	18DEC12	61		0014*	Material Procurements (Pipe)																
0005*	0118	Material Procurement (Valves & Fittings)	2	60	21NOV12	19JAN13	213		0018	Material Procurement (Valves & Fittings)																
0006*	0120	Welder Certifications	1	10	17DEC12	02JAN13	35		0015	Welder Certifications																
Site Preparation																										
0001*	0006	Mobilization	1	20	15NOV12	14DEC12	0		0011*, 0120*	Mobilization																
Permits																										
0001*	0003	SWPPP	2	60	10OCT12	08DEC12	8		0011, 0013, 0014	SWPPP																
Construction																										
Phase 1 (Phase 1)																										
0003, 0006*	0011	Survey Layout	1	5	17DEC12	21DEC12	0		0012*, 0013	Survey Layout																
0003, 0005, 0117*	0014	Material Delivery	1	1	19DEC12	19DEC12	40		0015, 0028	Material Delivery																
0011*	0012	Utility Locates / Exploration	1	15	19DEC12	11JAN13	0		0013*, 0015*, 0025*	Utility Locates / Exploration																
0002, 0003, 0004, 0011,	0013	Install SWPPP	1	10	14JAN13	25JAN13	20		0016*	Install SWPPP																
0012*, 0014, 0120	0015	Fusion of Pipe and Main Line Tees	1	18	14JAN13	06FEB13	28		0016	Fusion of Pipe and Main Line Tees																
0013*, 0015	0016	Strip Top Soil	1	3	28JAN13	30JAN13	20		0017*, 0019	Strip Top Soil																
0016*	0017	Install Open Cut Pipe	1	15	30JAN13	19FEB13	20		0018*, 0019*, 0021*, 0127*	Install Open Cut Pipe																
0016, 0017*	0019	Place Topsoil, Fine Grade and Seed	1	14	01FEB13	20FEB13	149		0023	Place Topsoil, Fine Grade and Seed																
0017*	0021	Issue Water Outage Connection Notification	2	30	07FEB13	08MAR13	191		0022*	Issue Water Outage Connection Notification																
0017*	0127	PH 1 - Install HDD	1	5	20FEB13	26FEB13	20		0032, 0137*	PH 1 - Install HDD																
0017*, 0118	0018	Install Connections, Fittings, Valves, Air	1	17	20FEB13	14MAR13	128		0020*	Install Connections, Fittings, Valves, Air																
0127*	0137	PH 1 - Fire Hydrant	1	1	27FEB13	27FEB13	142		0147*	PH 1 - Fire Hydrant																
0137*	0147	PH 1 - Abandon Existing Pipe	1	1	28FEB13	28FEB13	142		0157*	PH 1 - Abandon Existing Pipe																
0147*	0157	PH 1 - Abatement	1	1	01MAR13	01MAR13	142		0023	PH 1 - Abatement																
0021*	0022	Tie In Connections	1	1	12MAR13	12MAR13	134		0023	Tie In Connections																
0018*	0020	Flush New Lines - Hydrostatic Testing	1	5	15MAR13	21MAR13	128		0023*	Flush New Lines - Hydrostatic Testing																

(b)(4)

Start Date 10OCT12
 Finish Date 07APR14
 Data Date 10OCT12
 Run Date 04JAN13 15:43






B03C
 Sheet 1 of 5
 Sauer Incorporated Job #1603
 Stennis Waterline Project
 Baseline Schedule - Detailed

SAUER INCORPORATED

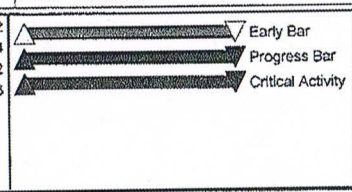
Calendar ID:
 1 = 5-Day Work Week
 2 = 7-Day Work Week

Predecessors	Activity ID	Activity Description	Cal ID	Orig Dur	Early Start	Early Finish	Total Float	Budgeted Cost	Successors	2012 2013 2014												
										O	N	D	J	F	M	A	M	J	J	A	S	O
0080*, 0081, 0083, 0547*	0084	Clean Up Ph 5	1	2	09AUG13	12AUG13	30	(b)(4)	521*	Clean Up Ph 5												
0084*	0521	Prefinal Inspection Ph 5	1	1	13AUG13	13AUG13	30		522*	Prefinal Inspection Ph 5												
0521*	0522	Final Inspection Ph 5	1	1	14AUG13	14AUG13	30		119	Final Inspection Ph 5												
Phase 6 (Phase 7)																						
0072*	0086	Survey Layout	1	5	30APR13	06MAY13	2		087*, 0088, 0089*	Survey Layout												
0074, 0086*	0089	Material Delivery	1	5	07MAY13	13MAY13	21		105	Material Delivery												
0086*	0087	Utility Locates / Exploration	1	10	07MAY13	20MAY13	2		088, 0090*, 0094, 0102*	Utility Locates / Exploration												
0087*	0090	Fusion of Pipe and Main Line Tees	1	19	21MAY13	17JUN13	12		088*, 0091, 0093	Fusion of Pipe and Main												
0086, 0087, 0090*	0088	Install SWPPP	1	1	06JUN13	06JUN13	12		091*	Install SWPPP												
0088*, 0090	0091	Strip Top Soil	1	25	07JUN13	12JUL13	12		092*, 0096*	Strip Top Soil												
0048, 0063*, 0087	0094	Install Jack and Bore	1	25	11JUN13	16JUL13	0		078*, 0093	Install Jack and Bore												
0091*	0092	Install Open Cut Pipe	1	36	11JUN13	31JUL13	12		095, 0096, 0098*	Install Open Cut Pipe												
0092*	0098	Issue Water Outage Connection Notification	1	30	19JUN13	31JUL13	30		099*, 0637*	Issue Water Outage												
0091*, 0092	0096	Place Topsoil, Fine Grade and Seed	1	25	15JUL13	16AUG13	24		100	Place Topsoil, Fine												
0098*	0637	PH 6 - Fire Hydrant	1	1	01AUG13	01AUG13	33		647*	PH 6 - Fire Hydrant												
0637*	0647	PH 6 - Abandon Existing Pipe (AEP)	1	1	02AUG13	02AUG13	33		657*	PH 6 - Abandon Exis												
0647*	0657	PH 6 - Salvage Existing Hydrants	1	1	05AUG13	05AUG13	33		100	PH 6 - Salvage Exis												
0098*	0099	Tie In Connections	1	3	06AUG13	08AUG13	30		100	Tie In Connections												
0078*, 0090, 0094	0093	Install HDD	1	6	09AUG13	16AUG13	0		095*	Install HDD												
0092, 0093*	0095	Install Connections, Fittings, Valves, Air	1	17	19AUG13	11SEP13	0		097*	Install Connection												
0095*	0097	Flush New Lines - Hydrostatic Testing	1	7	12SEP13	20SEP13	0		100*	Flush New Lines												
0096, 0097*, 0099, 0657	0100	Clean Up Ph 6	1	2	23SEP13	24SEP13	0		621*	Clean Up Ph 6												
0100*	0621	Prefinal Inspection Ph 6	1	1	25SEP13	25SEP13	0		622*	Prefinal Inspection Ph 6												
0621*	0622	Final Inspection Ph 6	1	1	26SEP13	26SEP13	0		119*	Final Inspection Ph 6												
Phase 7 (Phase 10)																						
0087*	0102	Survey Layout	1	5	21MAY13	28MAY13	2		0103*, 0104, 0105*	Survey Layout												
0089, 0102*	0105	Material Delivery	1	5	29MAY13	04JUN13	12		0106	Material Delivery												
0102*	0103	Utility Locates / Exploration	1	15	29MAY13	18JUN13	2		0104, 0106*	Utility Locates / Explorat												
0103*, 0105	0106	Fusion of Pipe and Main Line Tees	1	16	19JUN13	11JUL13	2		0104*, 0107	Fusion of Pipe and Ma												
0102, 0103, 0106*	0104	Install SWPPP	1	10	05JUL13	18JUL13	2		0107*	Install SWPPP												
0104*, 0106	0107	Strip Top Soil	1	15	19JUL13	08AUG13	2		0108*, 0110*	Strip Top Soil												
0107*	0108	Install Open Cut Pipe	1	16	23JUL13	13AUG13	2		0109*, 0110, 0112*	Install Open Cut Pipe												
0106*	0112	Issue Water Outage Connection Notification	1	30	31JUL13	11SEP13	2		0113*, 0737*	Issue Water Outa												
0107*, 0108	0110	Place Topsoil, Fine Grade and Seed	1	15	09AUG13	29AUG13	15		0114	Place Topsoil, Fine												
0108*	0109	Install Connections, Fittings, Valves, Air	1	7	14AUG13	22AUG13	15		0111*	Install Connections												
0109*	0111	Flush New Lines - Hydrostatic Testing	1	5	23AUG13	29AUG13	15		0114	Flush New Lines -												
0112*	0737	PH 7 - Fire Hydrant	1	1	12SEP13	12SEP13	4		0747*	PH 7 - Fire Hydrant												
0737*	0747	PH 7 - Unsuitable Materials	1	1	13SEP13	13SEP13	4		0757*	PH 7 - Unsuitable Materials												
0747*	0757	PH 7 - Abatement	1	1	16SEP13	16SEP13	4		0114	PH 7 - Abatement												

Start Date 10OCT12
 Finish Date 07APR14
 Data Date 10OCT12
 Run Date 04JAN13 15:43

 Early Bar
 Progress Bar
 Critical Activity

© Primavera Systems, Inc.



B03C

Sauer Incorporated Job #1603

Stennis Waterline Project

Baseline Schedule - Detailed

Sheet 4 of 5

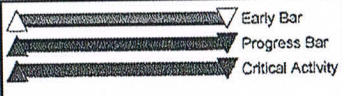
SAUER INCORPORATED

Calendar ID:
 1 = 5-Day Work Week
 2 = 7-Day Work Week

Predecessors	Activity ID	Activity Description	Cal ID	Orig Dur	Early Start	Early Finish	Total Float	Budgeted Cost	Successors	2012			2013			2014			
										O	N	D	O	N	D	J	J	M	J
0112*	0113	Tie In Connections	1	2	17SEP13	18SEP13	2	(b)(4)	0114*										
0110, 0111, 0113*, 0757	0114	Clean Up Ph 7	1	2	19SEP13	20SEP13	2		0721*										
0114*	0721	Prefinal Inspection Ph 7	1	1	23SEP13	23SEP13	2		0722*										
0721*	0722	Final Inspection Ph 7	1	1	24SEP13	24SEP13	2		0119										
Closeout																			
0122, 0222, 0322, 0422,	0119	Final As-Builts	1	1	27SEP13	27SEP13	0		0007*										
0119*	0007	Final Inspections	1	10	30SEP13	11OCT13	0		0008*										
0007*	0008	Punch List	1	60	14OCT13	10JAN14	0		0009*										
0008*	0009	Demobilization	1	10	13JAN14	24JAN14	0		1000*										
			1	376	10OCT12	07APR14	0												

2012	2013			2014				
O	N	D	J	J	M	J	J	M

Start Date 10OCT12
 Finish Date 07APR14
 Data Date 10OCT12
 Run Date 04JAN13 15:43



B03C Sheet 5 of 5

Sauer Incorporated Job #1603

Stennis Waterline Project

Baseline Schedule - Detailed

SAUER INCORPORATED

Calendar ID:
 1 = 5-Day Work Week
 2 = 7-Day Work Week

National Aeronautics and
Space Administration
John C. Stennis Space Center
Stennis Space Center, MS 39529-6000



January 29, 2013

Reply to Attn of: **RA10/13-0106DAW**

Sauer Incorporated
Attn: **(b)(6)**
11223 Phillips Pkwy, Drive East
Jacksonville, FL 32256-1574

Subject: EMI: 11B315-01 Upgrades to Potable Water System. NASA Contract: NNS12AA95T

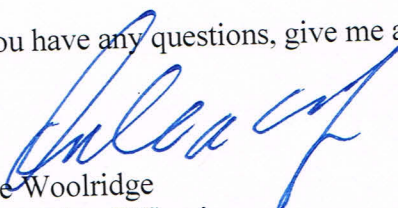
The following listed contractually required submittal is being returned to your office:

1. Transmittal 009A:

Item 1: Bar Chart Progress Chart Baseline Schedule – Receipt Acknowledged.

NOTE: ** "ANY COMMENT(S) THAT RESULT IN A CHANGE TO THE CONTRACT COST, SCOPE, OR SCHEDULE YOU MUST NOTIFY THE CONTRACTING OFFICER FOR APPROVAL PRIOR TO IMPLEMENTATION OR ANY COSTS ARE INCURRED."

If you have any questions, give me a call at 228-688-1655.


Dale Woolridge
Contracting Officer's
Technical Representative

Enclosure

cc:
Jacobs-FOSC **(b)(6)**
(b)(6) Official file

Activity ID	Activity Description	Cal ID	Orig Dur	Rem Dur	%	Early Start	Early Finish	Total Float	2013												2014			
									M	APR	MAY	JUN	JUL	AUG	SEP	OCT	NOV	DEC	JAN	FEB	MAR	A		
Stennis Waterline Project																								
Contract Administration																								
Contract Milestones																								
0115	Contract Duration	2	545	376	26	10OCT12A	07APR14	0																
1000	Early Completion	2	25	25	0	14MAR14	07APR14	0													Early Completion			
0116	Project Completion	2	0	0	0		07APR14	0													Project Completion			
Construction																								
Phase 1																								
0133	Third Submittal Fusion Plan	1	11	11	0	14MAR13A	11APR13	0													Third Submittal Fusion Plan			
0015	Fusion of Pipe and Main Line Tees	1	10	10	0	18APR13	01MAY13	0													Fusion of Pipe and Main Line Tees			
0016	Strip Top Soil	1	3	3	0	03MAY13	07MAY13	0													Strip Top Soil			
0017	Install Open Cut Pipe	1	20	20	0	08MAY13	05JUN13	0													Install Open Cut Pipe			
Phase 2																								
0031	Install Open Cut Pipe	1	20	20	0	31MAY13	27JUN13	0													Install Open Cut Pipe			
Phase 3																								
0046	Install Open Cut Pipe	1	20	20	0	28JUN13	26JUL13	0													Install Open Cut Pipe			
Phase 4																								
0061	Strip Top Soil	1	20	20	0	19JUL13	15AUG13	0													Strip Top Soil			
0062	Install Open Cut Pipe	1	25	25	0	19JUL13	22AUG13	0													Install Open Cut Pipe			
Phase 5																								
0076	Strip Top Soil	1	15	15	0	19AUG13	09SEP13	0													Strip Top Soil			
0077	Install Open Cut Pipe	1	20	20	0	19AUG13	16SEP13	0													Install Open Cut Pipe			
Phase 6																								
0092	Install Open Cut Pipe	1	30	30	0	11SEP13	22OCT13	0													Install Open Cut Pipe			
Phase 7																								
0107	Strip Top Soil	1	10	10	0	16OCT13	29OCT13	0													Strip Top Soil			
0108	Install Open Cut Pipe	1	15	15	0	16OCT13	05NOV13	0													Install Open Cut Pipe			
0111	Flush New Lines - Hydrostatic Testing	1	6	6	0	06NOV13	13NOV13	0													Flush New Lines - Hydrostatic Testing			
0109	Install Connections, Fittings, Valves, Air Relea	1	7	7	0	14NOV13	22NOV13	0													Install Connections, Fittings, Valves, Air Relea			
0113	Tie In Connections	1	10	10	0	25NOV13	10DEC13	0													Tie In Connections			
0737	PH 7 - Fire Hydrant	1	1	1	0	11DEC13	11DEC13	0													PH 7 - Fire Hydrant			
0747	PH 7 - Unsuitable Materials	1	1	1	0	11DEC13	11DEC13	0													PH 7 - Unsuitable Materials			
0757	PH 7 - Abatement	1	1	1	0	11DEC13	11DEC13	0													PH 7 - Abatement			
0114	Clean Up Ph 7	1	10	10	0	12DEC13	27DEC13	0													Clean Up Ph 7			
0721	Prefinal Inspection Ph 7	1	1	1	0	30DEC13	30DEC13	0													Prefinal Inspection Ph 7			

Start Date 10OCT12
 Finish Date 07APR14
 Data Date 28MAR13
 Run Date 16APR13 12:43

Early Bar
 Progress Bar
 Critical Activity

R03E Sheet 1 of 2

Sauer Incorporated Job #1603

Stennis Waterline Project

Critical Path

SAUER INCORPORATED

Calendar ID:
 1 = 5-Day Work Week
 2 = 7-Day Work Week

Activity ID	Activity Description	Cal ID	Orig Dur	Rem Dur	%	Early Start	Early Finish	Total Float	2013												2014				
									M	APR	MAY	JUN	JUL	AUG	SEP	OCT	NOV	DEC	JAN	FEB	MAR	A			
0722	Final Inspection Ph 7	1	1	1	0	31DEC13	31DEC13	0																	Final Inspection Ph 7
Closeout																									
0119	Final As-Builts	1	1	1	0	02JAN14	02JAN14	0																	Final As-Builts
0007	Final Inspections	1	10	10	0	03JAN14	16JAN14	0																	Final Inspections
0008	Punch List	1	30	30	0	17JAN14	27FEB14	0																	Punch List
0009	Demobilization	1	10	10	0	28FEB14	13MAR14	0																	Demobilization

Activity ID	Activity Description	Cal ID	Orig Dur	Rem Dur	%	Early Start	Early Finish	Total Float	2012												2013												2014																																																							
									S				O				N				D				J				F				M				A				M				J				J				A				S				O				N				D				J				F				M				A			
0054	Clean Up Ph 3	1	10	10	0	13SEP13	26SEP13	62																																					▲ Clean Up Ph 3																																											
0321	Prefinal Inspection Ph 3	1	1	1	0	27SEP13	27SEP13	62																																					▲ Prefinal Inspection Ph 3																																											
0322	Final Inspection Ph 3	1	1	1	0	30SEP13	30SEP13	62																																					▲ Final Inspection Ph 3																																											
Phase 4																																																																																								
0056	Survey Layout	1	6	2	75	06FEB13A	29MAR13	57																																					▲ Survey Layout																																											
0058	Install SWPPP	1	10	10	0	15APR13	26APR13	57																																					▲ Install SWPPP																																											
0059	Material Delivery	1	2	2	0	17APR13	18APR13	241																																					▲ Material Delivery																																											
0070	Fusion of HDD Pipe	1	7	7	0	07MAY13	15MAY13	115																																					▲ Fusion of HDD Pipe																																											
0057	Utility Locates / Exploration	1	15	15	0	07MAY13	28MAY13	217																																					▲ Utility Locates / Exploration																																											
0060	Fusion of Pipe and Main Line Tees	2	17	17	0	05JUN13	21JUN13	124																																					▲ Fusion of Pipe and Main Line Tees																																											
0063	Install HDD	1	15	15	0	13JUN13	03JUL13	36																																					▲ Install HDD																																											
0427	PH 4 - Clear/Grub/Gravel Rd	1	1	1	0	05JUL13	05JUL13	108																																					▲ PH 4 - Clear/Grub/Gravel Rd																																											
0437	PH 4 - Remove/Replace Asphalt & Concrete	1	1	1	0	08JUL13	08JUL13	108																																					▲ PH 4 - Remove/Replace Asphalt & Concrete																																											
0061	Strip Top Soil	1	20	20	0	19JUL13	15AUG13	0																																					▲ Strip Top Soil																																											
0062	Install Open Cut Pipe	1	25	25	0	19JUL13	22AUG13	0																																					▲ Install Open Cut Pipe																																											
0065	Place Topsoil, Fine Grade and Seed	1	30	30	0	19JUL13	29AUG13	71																																					▲ Place Topsoil, Fine Grade and Seed																																											
0067	Issue Water Outage Connection Notification	1	30	30	0	19AUG13	30SEP13	39																																					▲ Issue Water Outage Connection Notification																																											
0066	Flush New Lines - Hydrostatic Testing	1	10	10	0	23AUG13	06SEP13	37																																					▲ Flush New Lines - Hydrostatic Testing																																											
0064	Install Connections, Fittings, Valves, Air Relea	1	18	18	0	09SEP13	02OCT13	37																																					▲ Install Connections, Fittings, Valves, Air Relea																																											
0068	Tie In Connections	1	10	10	0	03OCT13	16OCT13	37																																					▲ Tie In Connections																																											
0447	PH 4 - Abandon Existing Pipe	1	1	1	0	17OCT13	17OCT13	37																																					▲ PH 4 - Abandon Existing Pipe																																											
0069	Clean Up Ph 4	1	10	10	0	18OCT13	31OCT13	37																																					▲ Clean Up Ph 4																																											
0421	Prefinal Inspection Ph 4	1	1	1	0	01NOV13	01NOV13	37																																					▲ Prefinal Inspection Ph 4																																											
0422	Final Inspection Ph 4	1	1	1	0	04NOV13	04NOV13	37																																					▲ Final Inspection Ph 4																																											
Phase 5																																																																																								
0071	Survey Layout	1	5	2	75	13FEB13A	29MAR13	78																																					▲ Survey Layout																																											
0074	Material Delivery	1	5	5	0	17APR13	23APR13	241																																					▲ Material Delivery																																											
0085	Fusion of HDD Pipe	1	5	5	0	17MAY13	23MAY13	115																																					▲ Fusion of HDD Pipe																																											
0078	Install HDD	1	12	12	0	24MAY13	11JUN13	128																																					▲ Install HDD																																											
0073	Install SWPPP	1	10	10	0	13JUN13	26JUN13	36																																					▲ Install SWPPP																																											
0075	Fusion of Pipe and Main Line Tees	1	10	10	0	24JUN13	08JUL13	86																																					▲ Fusion of Pipe and Main Line Tees																																											
0072	Utility Locates / Exploration	1	10	10	0	26JUN13	10JUL13	86																																					▲ Utility Locates / Exploration																																											
0076	Strip Top Soil	1	15	15	0	19AUG13	09SEP13	0																																					▲ Strip Top Soil																																											
0077	Install Open Cut Pipe	1	20	20	0	19AUG13	16SEP13	0																																					▲ Install Open Cut Pipe																																											
0080	Place Topsoil, Fine Grade and Seed	1	25	25	0	19AUG13	23SEP13	57																																					▲ Place Topsoil, Fine Grade and Seed																																											
0082	Issue Water Outage Connection Notification	1	30	30	0	27AUG13	08OCT13	35																																					▲ Issue Water Outage Connection Notification																																											
0081	Flush New Lines - Hydrostatic Testing	1	7	7	0	17SEP13	25SEP13	32																																					▲ Flush New Lines - Hydrostatic Testing																																											
0079	Install Connections, Fittings, Valves, Air Relea	1	12	12	0	26SEP13	11OCT13	32																																					▲ Install Connections, Fittings, Valves, Air Relea																																											
0083	Tie In Connections	1	10	10	0	14OCT13	25OCT13	32																																					▲ Tie In Connections																																											
0547	PH 5 - Abandon Existing Pipe	1	1	1	0	28OCT13	28OCT13	32																																					▲ PH 5 - Abandon Existing Pipe																																											
0084	Clean Up Ph 5	4	10	10	0	29OCT13	08NOV13	39																																					▲ Clean Up Ph 5																																											
0521	Prefinal Inspection Ph 5	1	1	1	0	11NOV13	11NOV13	31																																					▲ Prefinal Inspection Ph 5																																											
0522	Final Inspection Ph 5	1	1	1	0	12NOV13	12NOV13	31																																					▲ Final Inspection Ph 5																																											
Phase 6																																																																																								
0086	Survey Layout	1	5	2	75	13FEB13A	29MAR13	232																																					▲ Survey Layout																																											

National Aeronautics and
Space Administration
John C. Stennis Space Center
Stennis Space Center, MS 39529-6000



April 18, 2013

Reply to Attn of: **RA10/13-0512DAW**

Sauer Incorporated
Attn: (b)(6)
11223 Phillips Pkwy, Drive East
Jacksonville, FL 32256-1574

Subject: EMI: 11B315-01 Upgrades to Potable Water System. NASA Contract: NNS12AA95T

The following listed contractually required submittal is being returned to your office:

1. Transmittal 050A:

**Item 1: Bar Chart Schedule Revised April 16, 2013 – Approved Except as Noted;
Resubmission not Required. See Note**

Note:

- 1- Is the disinfection and the de-chlorination processes included in the flushing and hydrostatic testing time frame
- 2- If this is the case....I'm not sure the 11 days is enough to accomplish all these task if completed properly. We can't short cut any of the steps (flushing, hydro testing, disinfection, and de-chlorination) because they each have their own limits and time frames.

Examples:

Flushing – there is a specified volume and flow that has to be accomplished to get a good flush per AWWA

Hydro test – has to be brought to a specified pressure and held for a period of time with a log of pressure reading being kept as per AWWA

Disinfection – water has to be brought to a specified chlorine level and held for a period of time as per AWWA

De-chlorination- release of the highly chlorinated water has to be controlled through a de-chlorination process that insures minimum chlorine is released to the environment.

Sampling – samples have to be caught and sent to the MSDOH and only after passing can any connections to the existing potable water system be made.

NOTE: ** "ANY COMMENT(S) THAT RESULT IN A CHANGE TO THE CONTRACT COST, SCOPE, OR SCHEDULE YOU MUST NOTIFY THE CONTRACTING OFFICER FOR APPROVAL PRIOR TO IMPLEMENTATION OR ANY COSTS ARE INCURRED."

If you have any questions, give me a call at 228-688-1655.



Dale Woolridge
Contracting Officer's
Technical Representative

Enclosure

cc:

Jacobs-FOSC/ (b)(6)
(b)(6) Official file



National Aeronautics and Space Administration
John C. Stennis Space Center
Stennis Space Center, MS 39529-6000

CONTRACTOR TRANSMITTAL SHEET

DATE
17 April 2013

SHEET 1 OF 1

SECTION I - REQUEST FOR APPROVAL (To be Initiated by the Contractor)

TRANSMITTAL OF SHOP DRAWINGS, EQUIPMENT DATA, MATERIAL SAMPLES, OR MANUFACTURER'S CERTIFICATES OF COMPLIANCE
(See Instructions on Reverse)

CONTRACT NO.
NNS12AA95T

NEW SUBMITTAL
 RESUBMITTAL

TO
(b)(6)

FROM
Sauer Inc

PREVIOUS TRANSMITTAL NO. (If Any)
050

TRANSMITTAL NO.
050A

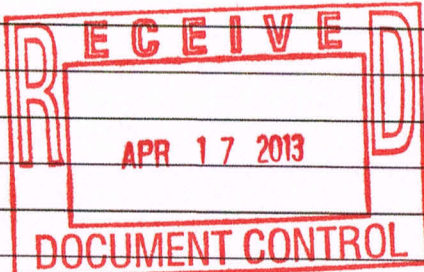
SPECIFICATION AND SECTION NO. (Cover Only One Section With Each Transmittal)

12G00-G020/01 33 00 Submittal Procedures

PROJECT TITLE AND LOCATION

11B315-01 - Upgrades to the Potable Water System

ITEM NO. (a)	DESCRIPTION OF ITEM SUBMITTED (Type, Size, Model Number, ect.) (See Instruction No. 3) (b)	MANUFACTURER OF ITEM (See Instruction No. 8) (c)	NO. OF COPIES (d)	CONTRACT REFERENCE DOCUMENT		VARIATION (See Instruction No. 6) (g)	ACTION CODE (See instruction No. 9) (h)
				SPECIFICATION PARAGRAPH NO. (e)	DRAWING SHEET NO. (f)		
	Bar Chart 09 April 2013 (Revised 16 April 2013)	Sauer, Inc.	6	1.6			B



REMARKS
Item 1 - Approved Except as Noted; Resubmission not Required. See Notes on Letter.

I certify that the above submitted items have been reviewed in detail and are correct and in strict conformance with the contract drawings and specifications, ~~except as noted~~.
(b)(6)

13-0512 DAW

SECTION II - APPROVAL ACTION

ENCLOSURES RETURNED (List by Item No.)

1

NAME, TITLE, AND SIGNATURE OF APPROVING AUTHORITY

DALE WOOLRIDGE

DATE

4/18/13



National Aeronautics and
Space Administration
John C. Stennis Space Center
Stennis Space Center, MS 39529-6000

CONTRACTOR TRANSMITTAL SHEET

DATE
7 June 2013

SHEET 1 OF 1

SECTION I - REQUEST FOR APPROVAL *(To be Initiated by the Contractor)*

TRANSMITTAL OF SHOP DRAWINGS, EQUIPMENT DATA, MATERIAL SAMPLES, OR
MANUFACTURER'S CERTIFICATES OF COMPLIANCE
(See Instructions on Reverse)

CONTRACT NO.
NNS12AA95T

NEW SUBMITTAL
 RESUBMITTAL

TO
(b)(6)

FROM
Sauer Inc

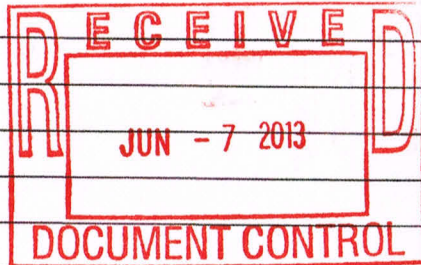
PREVIOUS TRANSMITTAL NO. *(If Any)*
N/A

TRANSMITTAL NO.
078

SPECIFICATION AND SECTION NO. *(Cover Only One Section With Each Transmittal)*
12G00-G020/ 01 33 00 Submittal Procedures

PROJECT TITLE AND LOCATION
11B315-01 - Upgrades to the Potable Water System

ITEM NO. (a)	DESCRIPTION OF ITEM SUBMITTED (Type, Size, Model Number, ect.) (See Instruction No. 3) (b)	MANUFACTURER OF ITEM (See Instruction No. 8) (c)	NO. OF COPIES (d)	CONTRACT REFERENCE DOCUMENT		VARIATION (See Instruction No. 6) (g)	ACTION CODE (See Instruction No. 9) (h)
				SPECIFICATION PARAGRAPH NO. (e)	DRAWING SHEET NO. (f)		
	Bar Chart Base Line Schedule 3 June 2013	Sauer, Inc.	6	1.6			



REMARKS

I certify that the above submitted items have been reviewed in detail and are correct and in strict conformance with the contract drawings and specifications, except as stated.

(b)(6)

CONTRACTOR

SECTION II - APPROVAL ACTION

ENCLOSURES RETURNED *(List by Item No.)*

NAME, TITLE, AND SIGNATURE OF APPROVING AUTHORITY

DATE

Activity ID	Activity Description	Cal ID	Orig Dur	Rem Dur	%	Early Start	Early Finish	Total Float	2012												2013					2014									
									S	O	N	D	J	F	M	A	M	J	J	A	S	O	N	D	J	F	M	A							
Stennis Waterline Project																																			
Contract Administration																																			
Contract Milestones																																			
0001	NTP	2	0	0	100	10OCT12A																													
0101	Bond	2	1	0	100	10OCT12A	10OCT12A																												
0115	Contract Duration	2	545	313	37	10OCT12A	07APR14	0																											
1000	Early Completion	2	33	33	0	06MAR14	07APR14	0																											
0116	Project Completion	2	0	0	0		07APR14	0																											
Preconstruction																																			
Submittals																																			
0002	Pre-Construction Submittals	2	90	72	20	21SEP12A	09AUG13	241																											
0005	Submittal Approvals	1	30	27	10	21SEP12A	08JUL13	42																											
0117	Material Procurements (Pipe)	2	141	48	50	28JAN13A	16JUL13	76																											
0004	Drawing Submittals	2	45	45	0	30MAY13	13JUL13	268																											
0120	Welder Certifications	1	10	10	0	30MAY13	12JUN13	206																											
0118	Material Procurement (Valves & Fittings)	2	66	66	0	09JUL13	12SEP13	59																											
Site Preparation																																			
0006	Mobilization	1	20	0	100	15DEC12A	20MAY13A																												
Permits																																			
0003	SWPPP	2	60	2	90	01NOV12A	31MAY13	311																											
Construction																																			
Phase 1 - Propellant Sta: 500+00 - 534+80																																			
0011	Survey Layout	1	5	1	75	02JAN13A	30MAY13	215																											
0014	Material Delivery	1	1	0	100	28JAN13A	22MAY13A																												
0012	Utility Locates / Exploration	1	5	0	100	12FEB13A	20MAY13A																												
0015	Fusion of Pipe and Main Line Tees	1	9	1	95	22APR13A	30MAY13	215																											
0013	Install SWPPP	1	10	10	0	08MAY13A	12JUN13	206																											
0016	Strip Top Soil	1	3	2	50	16MAY13A	31MAY13	121																											
0017	Install Open Cut Pipe	1	20	10	50	16MAY13A	12JUN13	0																											
0018	Install Connections, Fittings, Valves, Air Relea	1	10	5	50	22MAY13A	05JUN13	125																											
0019	Place Topsoil, Fine Grade and Seed	1	14	14	0	30MAY13	18JUN13	121																											
0137	PH 1 - Fire Hydrant	1	1	1	0	30MAY13	30MAY13	215																											
0127	PH 1 - Install 3" HDD	1	2	2	0	17JUN13	18JUN13	28																											
0021	Issue Water Outage Connection Notification	2	30	30	0	27JUN13	26JUL13	0																											
0020	Flush New Lines - Hydrostatic Testing	1	5	5	0	29JUL13	02AUG13	89																											
0022	Tie In Connections (Outage #3)	2	2	2	0	10AUG13	11AUG13	0																											
0147	PH 1 - Abandon Existing Pipe (Outage #3)	2	2	2	0	10AUG13	11AUG13	121																											

Start Date	10OCT12		Early Bar
Finish Date	07APR14		Progress Bar
Data Date	30MAY13		Critical Activity
Run Date	03JUN13 08:26		

S03F

Sheet 1 of 5

Sauer Incorporated Job #1603

Stennis Waterline Project

Schedule Update



Calendar ID:
 1 = 5-Day Work Week
 2 = 7-Day Work Week

Activity ID	Activity Description	Cal ID	Orig Dur	Rem Dur	%	Early Start	Early Finish	Total Float	2012												2013												2014																																																							
									S				O				N				D				J				F				M				A				M				J				J				A				S				O				N				D				J				F				M				A			
0157	PH 1 - Abatement (Outage #3)	2	2	2	0	10AUG13	11AUG13	121																																					PH 1 - Abatement (Outage #3)																																											
0023	Clean Up Ph 1	1	2	2	0	13AUG13	14AUG13	83																																					Clean Up Ph 1																																											
0121	Prefinal Inspection Ph 1	1	1	1	0	15AUG13	15AUG13	83																																					Prefinal Inspection Ph 1																																											
0122	Final Inspection Ph 1	1	1	1	0	16AUG13	16AUG13	83																																					Final Inspection Ph 1																																											
Phase 2 - Saturn Sta: 163+00 - 218+80																																																																																								
0028	Material Delivery	1	5	0	100	28JAN13A	02MAY13A																																						Material Delivery																																											
0025	Survey Layout	1	5	1	75	29JAN13A	30MAY13	9																																					Survey Layout																																											
0026	Utility Locates / Exploration	1	15	0	100	21FEB13A	20MAY13A																																						Utility Locates / Exploration																																											
0029	Fusion of Pipe and Main Line Tees	1	12	2	90	25APR13A	31MAY13	12																																					Fusion of Pipe and Main Line Tees																																											
0039	Fusion of HDD Pipe	1	5	5	0	25APR13A	05JUN13	12																																					Fusion of HDD Pipe																																											
0027	Install SWPPP	1	10	10	0	04JUN13	17JUN13	9																																					Install SWPPP																																											
0030	Strip Top Soil	1	15	15	0	04JUN13	24JUN13	9																																					Strip Top Soil																																											
0031	Install Open Cut Pipe	1	20	20	0	06JUN13	03JUL13	9																																					Install Open Cut Pipe																																											
0033	Install Connections, Fittings, Valves, Air Relea	1	10	10	0	06JUN13	19JUN13	114																																					Install Connections, Fittings, Valves, Air Relea																																											
0034	Place Topsoil, Fine Grade and Seed	1	20	20	0	10JUN13	08JUL13	108																																					Place Topsoil, Fine Grade and Seed																																											
0032	Install HDD	1	15	15	0	19JUN13	10JUL13	28																																					Install HDD																																											
0035	Flush New Lines - Hydrostatic Testing	1	6	6	0	20JUN13	27JUN13	114																																					Flush New Lines - Hydrostatic Testing																																											
0036	Issue Water Outage Connection Notification	2	30	30	0	27JUN13	26JUL13	0																																					Issue Water Outage Connection Notification																																											
0037	Tie In Connections (Outage #1)	2	2	2	0	27JUL13	28JUL13	0																																					Tie In Connections (Outage #1)																																											
0247	PH 2 - Abandon Existing Pipe (Outage #1)	2	2	2	0	27JUL13	28JUL13	135																																					PH 2 - Abandon Existing Pipe (Outage #1)																																											
0257	PH 2 - Abatement (Outage #1)	2	2	2	0	27JUL13	28JUL13	135																																					PH 2 - Abatement (Outage #1)																																											
0037B	Tie In Connections (Outage #2)	2	2	2	0	03AUG13	04AUG13	0																																					Tie In Connections (Outage #2)																																											
0247B	PH 2 - Abandon Existing Pipe (Outage #2)	2	2	2	0	03AUG13	04AUG13	246																																					PH 2 - Abandon Existing Pipe (Outage #2)																																											
0257B	PH 2 - Abatement (Outage #2)	2	2	2	0	03AUG13	04AUG13	246																																					PH 2 - Abatement (Outage #2)																																											
0037A	Tie In Connections (Outage #4)	2	2	2	0	29AUG13	30AUG13	0																																					Tie In Connections (Outage #4)																																											
0247A	PH 2 - Abandon Existing Pipe (Outage #4)	2	2	2	0	29AUG13	30AUG13	102																																					PH 2 - Abandon Existing Pipe (Outage #4)																																											
0257A	PH 2 - Abatement (Outage #4)	2	2	2	0	29AUG13	30AUG13	102																																					PH 2 - Abatement (Outage #4)																																											
0038	Clean Up Ph 2	1	2	2	0	03SEP13	04SEP13	69																																					Clean Up Ph 2																																											
0221	Prefinal Inspection Ph 2	1	1	1	0	05SEP13	05SEP13	69																																					Prefinal Inspection Ph 2																																											
0222	Final Inspection Ph 2	1	1	1	0	06SEP13	06SEP13	69																																					Final Inspection Ph 2																																											
Phase 3 - Saturn Sta: 100+00 - 163+00																																																																																								
0043	Material Delivery	1	5	0	100	19FEB13A	21MAY13A																																						Material Delivery																																											
0041	Utility Locates / Exploration	1	15	4	75	08APR13A	04JUN13	14																																					Utility Locates / Exploration																																											
0124	Fusion of HDD Pipe	1	5	5	0	07MAY13A	05JUN13	211																																					Fusion of HDD Pipe																																											
0044	Fusion of Pipe and Main Line Tees	1	10	3	70	14MAY13A	03JUN13	25																																					Fusion of Pipe and Main Line Tees																																											
0040	Survey Layout	1	4	4	0	30MAY13	04JUN13	21																																					Survey Layout																																											
0042	Install SWPPP	1	10	10	0	14JUN13	27JUN13	14																																					Install SWPPP																																											
0048	Install Jack and Bore	1	7	7	0	14JUN13	24JUN13	14																																					Install Jack and Bore																																											
0045	Strip Top Soil	1	15	15	0	28JUN13	19JUL13	14																																					Strip Top Soil																																											
0046	Install Open Cut Pipe	1	20	20	0	28JUN13	26JUL13	14																																					Install Open Cut Pipe																																											
0049	Install Connections, Fittings, Valves, Air Relea	1	20	20	0	28JUN13	26JUL13	87																																					Install Connections, Fittings, Valves, Air Relea																																											
0050	Place Topsoil, Fine Grade and Seed	1	25	25	0	02JUL13	06AUG13	87																																					Place Topsoil, Fine Grade and Seed																																											
0337	PH 3 - Sanitary Sewer Relocate	1	1	1	0	10JUL13	10JUL13	186																																					PH 3 - Sanitary Sewer Relocate																																											
0047	Install HDD	1	7	7	0	11JUL13	19JUL13	28																																					Install HDD																																											
0051	Flush New Lines - Hydrostatic Testing	1	7	7	0	29JUL13	06AUG13	87																																					Flush New Lines - Hydrostatic Testing																																											

Activity ID	Activity Description	Cal ID	Orig Dur	Rem Dur	%	Early Start	Early Finish	Total Float	2012												2013												2014																																																							
									S				O				N				D				J				F				M				A				M				J				J				A				S				O				N				D				J				F				M				A			
0052	Issue Water Outage Connection Notification	2	30	30	0	29JUL13	27AUG13	0	Issue Water Outage Connection Notification																																																																															
0053	Tie In Connections (Outage #5)	2	2	2	0	31AUG13	01SEP13	0	Tie In Connections (Outage #5)																																																																															
0347	PH 3 - Abandon Existing Pipe (Outage #5)	2	2	2	0	31AUG13	01SEP13	218	PH 3 - Abandon Existing Pipe (Outage #5)																																																																															
0357	PH 3 - Abatement (Outage #5)	2	2	2	0	31AUG13	01SEP13	218	PH 3 - Abatement (Outage #5)																																																																															
0053A	Tie In Connections (Outage #6)	2	2	2	0	07SEP13	08SEP13	0	Tie In Connections (Outage #6)																																																																															
0347A	PH 3 - Abandon Existing Pipe (Outage #6)	2	2	2	0	07SEP13	08SEP13	26	PH 3 - Abandon Existing Pipe (Outage #6)																																																																															
0357A	PH 3 - Abatement (Outage #6)	2	2	2	0	07SEP13	08SEP13	26	PH 3 - Abatement (Outage #6)																																																																															
0053B	Tie In Connections (Outage #8)	2	2	2	0	12OCT13	13OCT13	0	Tie In Connections (Outage #8)																																																																															
0347B	PH 3 - Abandon Existing Pipe (Outage #8)	2	2	2	0	12OCT13	13OCT13	58	PH 3 - Abandon Existing Pipe (Outage #8)																																																																															
0357B	PH 3 - Abatement (Outage #8)	2	2	2	0	12OCT13	13OCT13	58	PH 3 - Abatement (Outage #8)																																																																															
0054	Clean Up Ph 3	1	2	2	0	14OCT13	15OCT13	40	Clean Up Ph 3																																																																															
0321	Prefinal Inspection Ph 3	1	1	1	0	16OCT13	16OCT13	40	Prefinal Inspection Ph 3																																																																															
0322	Final Inspection Ph 3	1	1	1	0	17OCT13	17OCT13	40	Final Inspection Ph 3																																																																															
Phase 4 - Trent Lott, Road "H", Endeavor																																																																																								
0056	Survey Layout	1	6	2	75	06FEB13A	31MAY13	11	Survey Layout																																																																															
0057	Utility Locates / Exploration	1	15	15	0	19APR13A	19JUN13	7	Utility Locates / Exploration																																																																															
0059	Material Delivery	1	2	1	75	25APR13A	30MAY13	215	Material Delivery																																																																															
0070	Fusion of HDD Pipe	1	7	7	0	30MAY13	07JUN13	8	Fusion of HDD Pipe																																																																															
0060	Fusion of Pipe and Main Line Tees	1	15	15	0	05JUN13	25JUN13	8	Fusion of Pipe and Main Line Tees																																																																															
0058	Install SWPPP	1	10	10	0	21JUN13	05JUL13	7	Install SWPPP																																																																															
0061	Strip Top Soil	1	20	20	0	08JUL13	02AUG13	7	Strip Top Soil																																																																															
0062	Install Open Cut Pipe	1	25	25	0	10JUL13	13AUG13	7	Install Open Cut Pipe																																																																															
0064	Install Connections, Fittings, Valves, Air Relea	1	18	18	0	10JUL13	02AUG13	79	Install Connections, Fittings, Valves, Air Relea																																																																															
0065	Place Topsoil, Fine Grade and Seed	1	25	25	0	12JUL13	15AUG13	80	Place Topsoil, Fine Grade and Seed																																																																															
0427	PH 4 - Clear/Grub/Gravel Rd	1	1	1	0	15JUL13	15JUL13	97	PH 4 - Clear/Grub/Gravel Rd																																																																															
0437	PH 4 - Remove/Replace Asphalt & Concrete	1	1	1	0	19JUL13	19JUL13	97	PH 4 - Remove/Replace Asphalt & Concrete																																																																															
0063	Install HDD	1	15	15	0	23JUL13	12AUG13	28	Install HDD																																																																															
0067	Issue Water Outage Connection Notification	2	30	30	0	29JUL13	27AUG13	0	Issue Water Outage Connection Notification																																																																															
0066	Flush New Lines - Hydrostatic Testing	1	10	10	0	05AUG13	16AUG13	79	Flush New Lines - Hydrostatic Testing																																																																															
0068	Tie In Connections (Outage #7)	2	2	2	0	05OCT13	06OCT13	0	Tie In Connections (Outage #7)																																																																															
0447	PH 4 - Abandon Existing Pipe	2	2	2	0	05OCT13	06OCT13	65	PH 4 - Abandon Existing Pipe																																																																															
0069	Clean Up Ph 4	1	2	2	0	07OCT13	08OCT13	45	Clean Up Ph 4																																																																															
0421	Prefinal Inspection Ph 4	1	1	1	0	09OCT13	09OCT13	45	Prefinal Inspection Ph 4																																																																															
0422	Final Inspection Ph 4	1	1	1	0	10OCT13	10OCT13	45	Final Inspection Ph 4																																																																															
Phase 5 - Road "J" Sta: 916+00 - 981+00																																																																																								
0071	Survey Layout	1	5	2	75	13FEB13A	31MAY13	50	Survey Layout																																																																															
0074	Material Delivery	1	5	2	75	01APR13A	31MAY13	214	Material Delivery																																																																															
0072	Utility Locates / Exploration	1	10	10	0	06JUN13*	19JUN13	47	Utility Locates / Exploration																																																																															
0085	Fusion of HDD Pipe	1	7	7	0	10JUN13	18JUN13	202	Fusion of HDD Pipe																																																																															
0073	Install SWPPP	1	10	10	0	20JUN13	03JUL13	47	Install SWPPP																																																																															
0075	Fusion of Pipe and Main Line Tees	1	10	10	0	26JUN13	10JUL13	51	Fusion of Pipe and Main Line Tees																																																																															
0076	Strip Top Soil	1	15	15	0	14AUG13*	04SEP13	19	Strip Top Soil																																																																															
0078	Install HDD	1	15	15	0	15AUG13	05SEP13	28	Install HDD																																																																															
0077	Install Open Cut Pipe	1	20	20	0	16AUG13	13SEP13	19	Install Open Cut Pipe																																																																															
0079	Install Connections, Fittings, Valves, Air Relea	1	20	20	0	16AUG13	13SEP13	53	Install Connections, Fittings, Valves, Air Relea																																																																															

Activity ID	Activity Description	Cal ID	Orig Dur	Rem Dur	%	Early Start	Early Finish	Total Float	2012												2013												2014																																																							
									S				O				N				D				J				F				M				A				M				J				J				A				S				O				N				D				J				F				M				A			
0080	Place Topsoil, Fine Grade and Seed	1	20	20	0	20AUG13	17SEP13	58	Place Topsoil, Fine Grade and Seed																																																																															
0082	Issue Water Outage Connection Notification	2	30	30	0	13SEP13	12OCT13	0	Issue Water Outage Connection Notification																																																																															
0081	Flush New Lines - Hydrostatic Testing	1	7	7	0	16SEP13	24SEP13	53	Flush New Lines - Hydrostatic Testing																																																																															
0083	Tie In Connections	2	23	23	0	19OCT13	10NOV13	0	Tie In Connections																																																																															
0547	PH 5 - Abandon Existing Pipe	2	22	22	0	19OCT13	09NOV13	31	PH 5 - Abandon Existing Pipe																																																																															
0084	Clean Up Ph 5	1	2	2	0	12NOV13	13NOV13	19	Clean Up Ph 5																																																																															
0521	Prefinal Inspection Ph 5	1	1	1	0	14NOV13	14NOV13	19	Prefinal Inspection Ph 5																																																																															
0522	Final Inspection Ph 5	1	1	1	0	15NOV13	15NOV13	19	Final Inspection Ph 5																																																																															
Phase 6 - Balch Sta: 400+00 - 436+80																																																																																								
0086	Survey Layout	1	5	2	75	13FEB13A	31MAY13	47	Survey Layout																																																																															
0089	Material Delivery	1	5	3	50	02MAY13A	03JUN13	77	Material Delivery																																																																															
0087	Utility Locates / Exploration	1	10	10	0	03JUN13	14JUN13	47	Utility Locates / Exploration																																																																															
0090	Fusion of Pipe and Main Line Tees	1	19	19	0	17JUN13	12JUL13	47	Fusion of Pipe and Main Line Tees																																																																															
0088	Install SWPPP	1	5	5	0	02JUL13	09JUL13	47	Install SWPPP																																																																															
0094	Install Jack and Bore	1	20	20	0	02JUL13	30JUL13	38	Install Jack and Bore																																																																															
0091	Strip Top Soil	1	23	23	0	06SEP13*	08OCT13	6	Strip Top Soil																																																																															
0093	Install HDD	1	3	3	0	09SEP13	11SEP13	28	Install HDD																																																																															
0092	Install Open Cut Pipe	1	25	25	0	10SEP13	14OCT13	6	Install Open Cut Pipe																																																																															
0095	Install Connections, Fittings, Valves, Air Relea	1	25	25	0	12SEP13	16OCT13	28	Install Connections, Fittings, Valves, Air Relea																																																																															
0096	Place Topsoil, Fine Grade and Seed	1	25	25	0	12SEP13	16OCT13	37	Place Topsoil, Fine Grade and Seed																																																																															
0637	PH 6 - Fire Hydrant	1	1	1	0	27SEP13	27SEP13	40	PH 6 - Fire Hydrant																																																																															
0098	Issue Water Outage Connection Notification	2	30	30	0	09OCT13	07NOV13	0	Issue Water Outage Connection Notification																																																																															
0097	Flush New Lines - Hydrostatic Testing	1	7	7	0	21OCT13	29OCT13	28	Flush New Lines - Hydrostatic Testing																																																																															
0099	Tie In Connections	2	16	16	0	23NOV13	08DEC13	0	Tie In Connections																																																																															
0647	PH 6 - Abandon Existing Pipe (AEP)	2	16	16	0	23NOV13	08DEC13	0	PH 6 - Abandon Existing Pipe (AEP)																																																																															
0657	PH 6 - Salvage Existing Hydrants	1	1	1	0	10DEC13	10DEC13	0	PH 6 - Salvage Existing Hydrants																																																																															
0100	Clean Up Ph 6	1	2	2	0	11DEC13	12DEC13	0	Clean Up Ph 6																																																																															
0621	Prefinal Inspection Ph 6	1	1	1	0	13DEC13	13DEC13	0	Prefinal Inspection Ph 6																																																																															
0622	Final Inspection Ph 6	1	1	1	0	16DEC13	16DEC13	0	Final Inspection Ph 6																																																																															
Phase 7 - NDBC Sta: 600+00 - 630+50																																																																																								
0102	Survey Layout	1	5	5	0	17JUN13	21JUN13	59	Survey Layout																																																																															
0103	Utility Locates / Exploration	1	10	10	0	24JUN13	08JUL13	59	Utility Locates / Exploration																																																																															
0105	Material Delivery	1	5	5	0	24JUN13	28JUN13	64	Material Delivery																																																																															
0106	Fusion of Pipe and Main Line Tees	1	10	10	0	17JUL13	30JUL13	53	Fusion of Pipe and Main Line Tees																																																																															
0104	Install SWPPP	1	5	5	0	01AUG13	07AUG13	53	Install SWPPP																																																																															
0107	Strip Top Soil	1	15	15	0	15OCT13	04NOV13	6	Strip Top Soil																																																																															
0108	Install Open Cut Pipe	1	15	15	0	16OCT13	05NOV13	6	Install Open Cut Pipe																																																																															
0109	Install Connections, Fittings, Valves, Air Relea	1	15	15	0	16OCT13	05NOV13	18	Install Connections, Fittings, Valves, Air Relea																																																																															
0747	PH 7 - Unsuitable Materials	1	4	4	0	16OCT13	21OCT13	27	PH 7 - Unsuitable Materials																																																																															
0110	Place Topsoil, Fine Grade and Seed	1	15	15	0	18OCT13	07NOV13	21	Place Topsoil, Fine Grade and Seed																																																																															
0112	Issue Water Outage Connection Notification	2	30	30	0	24OCT13	22NOV13	0	Issue Water Outage Connection Notification																																																																															
0737	PH 7 - Fire Hydrant	1	1	1	0	30OCT13	30OCT13	108	PH 7 - Fire Hydrant																																																																															
0111	Flush New Lines - Hydrostatic Testing	1	5	5	0	06NOV13	12NOV13	18	Flush New Lines - Hydrostatic Testing																																																																															
0113	Tie In Connections	2	11	11	0	30NOV13	10DEC13	0	Tie In Connections																																																																															
0757	PH 7 - Abatement	2	11	11	0	30NOV13	10DEC13	0	PH 7 - Abatement																																																																															

Activity ID	Activity Description	Cal ID	Orig Dur	Rem Dur	%	Early Start	Early Finish	Total Float	2012												2013					2014			
									S	O	N	D	J	F	M	A	M	J	J	A	S	O	N	D	J	F	M	A	
0114	Clean Up Ph 7	1	2	2	0	11DEC13	12DEC13	0																		Clean Up Ph 7			
0721	Prefinal Inspection Ph 7	1	1	1	0	13DEC13	13DEC13	0																		Prefinal Inspection Ph 7			
0722	Final Inspection Ph 7	1	1	1	0	16DEC13	16DEC13	0																		Final Inspection Ph 7			
Closeout																													
0131	Safety Award Bid Item 007	1	1	1	25	20MAY13A	30MAY13	215																		Safety Award Bid Item 007			
0119	Final As-Builts	1	1	1	0	17DEC13	17DEC13	0																		Final As-Builts			
0007	Final Inspections	1	10	10	0	18DEC13	03JAN14	0																		Final Inspections			
0008	Punch List	1	33	33	0	06JAN14	19FEB14	0																		Punch List			
0009	Demobilization	1	10	10	0	20FEB14	05MAR14	0																		Demobilization			

National Aeronautics and
Space Administration
John C. Stennis Space Center
Stennis Space Center, MS 39529-6000



June 11, 2013

Reply to Attn of: **RA10/13-0948DAW**

Sauer Incorporated
Attn: (b)(6)
11223 Phillips Pkwy, Drive East
Jacksonville, FL 32256-1574

Subject: EMI: 11B315-01 Upgrades to Potable Water System. NASA Contract: NNS12AA95T

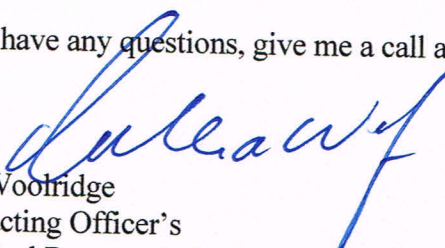
The following listed contractually required submittal is being returned to your office:

1. Transmittal 078:

Item 1: Bar Chart Base Line Schedule 3 June 2013 – Approved as Submitted.

NOTE: ** "ANY COMMENT(S) THAT RESULT IN A CHANGE TO THE CONTRACT COST, SCOPE, OR SCHEDULE YOU MUST NOTIFY THE CONTRACTING OFFICER FOR APPROVAL PRIOR TO IMPLEMENTATION OR ANY COSTS ARE INCURRED."

If you have any questions, give me a call at 228-688-1655.

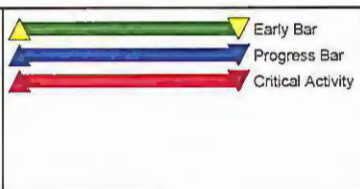

Dale Woodridge
Contracting Officer's
Technical Representative

Enclosure

cc:
Jacobs-FOSC/ (b)(6)
(b)(6) Official file

Activity ID	Activity Description	Cal ID	Orig Dur	Rem Dur	%	Early Start	Early Finish	Total Float	2014								
									J	FEB	MAR	APR	MAY	JUN	JUL	AUG	
Stennis Waterline Project																	
Construction																	
Phase 1 - Propellant Sta: 500+00 - 534+80																	
0022	Tie In Connections (Sta 501+75 & 516+40)	5	2	2	0	15FEB14	16FEB14	-2	Tie In Connections (Sta 501+75 & 516+40)								
Phase 2 - Saturn Sta: 163+00 - 218+80																	
0037	Tie In Connections (Sta 163+25 & 180+87)	5	2	2	0	08FEB14*	09FEB14	-2	Tie In Connections (Sta 163+25 & 180+87)								
0037B	Tie In Connections (Sta 189+60 & 191+41)	5	2	2	0	22FEB14	23FEB14	-2	Tie In Connections (Sta 189+60 & 191+41)								
0247B	PH 2 - Abandon Exist Pipe (Sta 189+60 & 191+41)	5	2	2	0	22FEB14	23FEB14	-2	PH 2 - Abandon Exist Pipe (Sta 189+60 & 191+41)								
0257B	PH 2 - Abatement (Sta 189+60 & 191+41)	5	2	2	0	22FEB14	23FEB14	-2	PH 2 - Abatement (Sta 189+60 & 191+41)								
0037C	Tie In Connections (Sta 198+46 & 218+80)	5	2	2	0	01MAR14	02MAR14	-2	Tie In Connections (Sta 198+46 & 218+80)								
0037A	Tie In Connections (Sta 177+67 & 180+35)	5	2	2	0	08MAR14	09MAR14	-2	Tie In Connections (Sta 177+67 & 180+35)								
Phase 3 - Saturn Sta: 100+00 - 163+00																	
FCR15-17	Install FCR 015 & 017	1	32	32	0	04FEB14*	19MAR14	-5	Install FCR 015 & 017								
0051	Flush New Lines - Hydrostatic Testing	1	10	10	0	20MAR14	02APR14	-5	Flush New Lines - Hydrostatic Testing								
0053	Tie In Connections (Sta 130+20)	5	2	2	0	05APR14	06APR14	-2	Tie In Connections (Sta 130+20)								
0347	PH 3 - Abandon Pipe (Sta 130+20)	5	2	2	0	05APR14	06APR14	-2	PH 3 - Abandon Pipe (Sta 130+20)								
0357	PH 3 - Abatement (Sta 130+20)	5	2	2	0	05APR14	06APR14	-2	PH 3 - Abatement (Sta 130+20)								
0153	Tie In Connections (Sta 134+56, 135+35 & 135+42)	5	2	2	0	12APR14	13APR14	-2	Tie In Connections (Sta 134+56, 135+35 & 135+42)								
0253	Tie In Connections (Sta 143+30)	5	2	2	0	26APR14	27APR14	-2	Tie In Connections (Sta 143+30)								
0053A	Tie In Connections (Sta 119+36 & 155+15)	5	2	2	0	03MAY14	04MAY14	-2	Tie In Connections (Sta 119+36 & 155+15)								
0347A	PH 3 - Abandon Exist Pipe (Sta 119+36 & 155+15)	5	2	2	0	03MAY14	04MAY14	-2	PH 3 - Abandon Exist Pipe (Sta 119+36 & 155+15)								
0357A	PH 3 - Abatement (Sta 119+36 & 155+15)	5	2	2	0	03MAY14	04MAY14	-2	PH 3 - Abatement (Sta 119+36 & 155+15)								
0053B	Tie In Connections (Sta 103+00 & 109+10)	5	2	2	0	31MAY14	01JUN14	-2	Tie In Connections (Sta 103+00 & 109+10)								
Phase 4 - Trent Lott, Road "H", Endeavor																	
0353	Tie In Connections (Sta 340+70)	5	2	2	0	10MAY14	11MAY14	-2	Tie In Connections (Sta 340+70)								
0068	Tie In Connections (Sta 800+00)	5	2	2	0	17MAY14	18MAY14	-2	Tie In Connections (Sta 800+00)								
0168	Tie In Connections (Sta 100+00)	5	2	2	0	24MAY14	25MAY14	-2	Tie In Connections (Sta 100+00)								
Phase 5 - Road "J" Sta: 916+00 - 981+00																	
0082P	Issue Partial Outage 957+20 to 981+17	2	18	18	0	31JAN14	17FEB14	-7	Issue Partial Outage 957+20 to 981+17								
0082	Issue Water Outage Connection Notification	2	30	30	0	31JAN14	01MAR14	-7	Issue Water Outage Connection Notification								
0081P	Flush Partial Outage 957+20 to 981+17	1	10	10	0	26FEB14	11MAR14	-5	Flush Partial Outage 957+20 to 981+17								
0083	Tie In Connections (Sta 977+45)	5	2	2	0	22MAR14	23MAR14	-2	Tie In Connections (Sta 977+45)								
0183	Tie In Connections (Sta 962+10 & 957+40)	5	2	2	0	29MAR14	30MAR14	-2	Tie In Connections (Sta 962+10 & 957+40)								
0083A	Tie In Connections (Sta 922+50)	5	2	2	0	07JUN14	08JUN14	-2	Tie In Connections (Sta 922+50)								
0083B	Tie In Connections (Sta 936+60 x2)	5	2	2	0	14JUN14	15JUN14	-2	Tie In Connections (Sta 936+60 x2)								
0083C	Tie In Connections (Sta 947+00)	5	2	2	0	21JUN14	22JUN14	-2	Tie In Connections (Sta 947+00)								

Start Date 10OCT12
 Finish Date 17AUG14
 Data Date 31JAN14
 Run Date 18FEB14 09:28

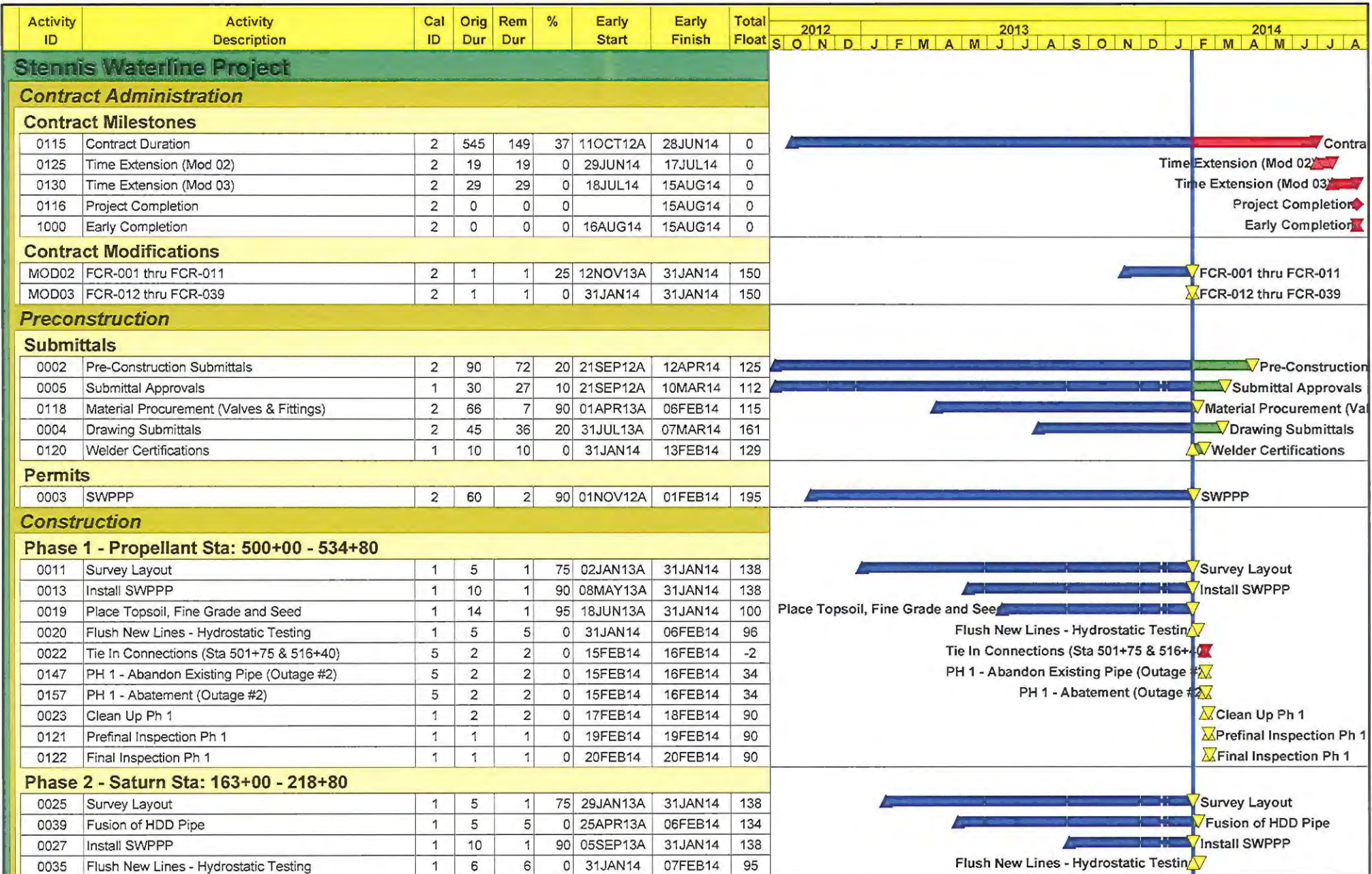


S03P
 Sauer Incorporated Job #1603
 Stennis Waterline Project
 Critical Path
 Sheet 1 of 2

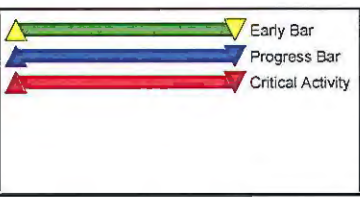
SAUER INCORPORATED

Calendar ID:
 1 = 5-Day Work Week
 2 = 7-Day Work Week
 5 = Weekends

Activity ID	Activity Description	Cal ID	Orig Dur	Rem Dur	%	Early Start	Early Finish	Total Float	2014						
									J	FEB	MAR	APR	MAY	JUN	JUL
0083D	Tie In Connections (Sta 916+46 & 955+00)	5	2	2	0	12JUL14	13JUL14	-2	Tie In Connections (Sta 916+46 & 955+00)						
Phase 6 - Balch Sta: 400+00 - 436+80									Tie In Connections (Sta 403+80 & 415+80)						
0099	Tie In Connections (Sta 403+80 & 415+80)	5	2	2	0	19JUL14	20JUL14	-2	Tie In Connections (Sta 411+35)						
0099A	Tie In Connections (Sta 411+35)	5	2	2	0	26JUL14	27JUL14	-2	Tie In Connections (Sta 420+50 & 423+70)						
0099B	Tie In Connections (Sta 420+50 & 423+70)	5	2	2	0	02AUG14	03AUG14	-2	Tie In Connections (Sta 427+35 & 426+35)						
0099C	Tie In Connections (Sta 427+35 & 426+35)	5	2	2	0	09AUG14	10AUG14	-2	Tie In Connections (Sta 407+95 & 417+85)						
0099D	Tie In Connections (Sta 407+95 & 417+85)	5	2	2	0	16AUG14	17AUG14	-2							
Phase 7 - NDBC Sta: 600+00 - 630+50									Tie In Connections (Sta 610+75 & 600+40)						
0113	Tie In Connections (Sta 610+75 & 600+40)	5	2	2	0	28JUN14	29JUN14	-2							



Start Date 10OCT12
 Finish Date 17AUG14
 Data Date 31JAN14
 Run Date 18FEB14 09:29



S03P Sheet 1 of 4

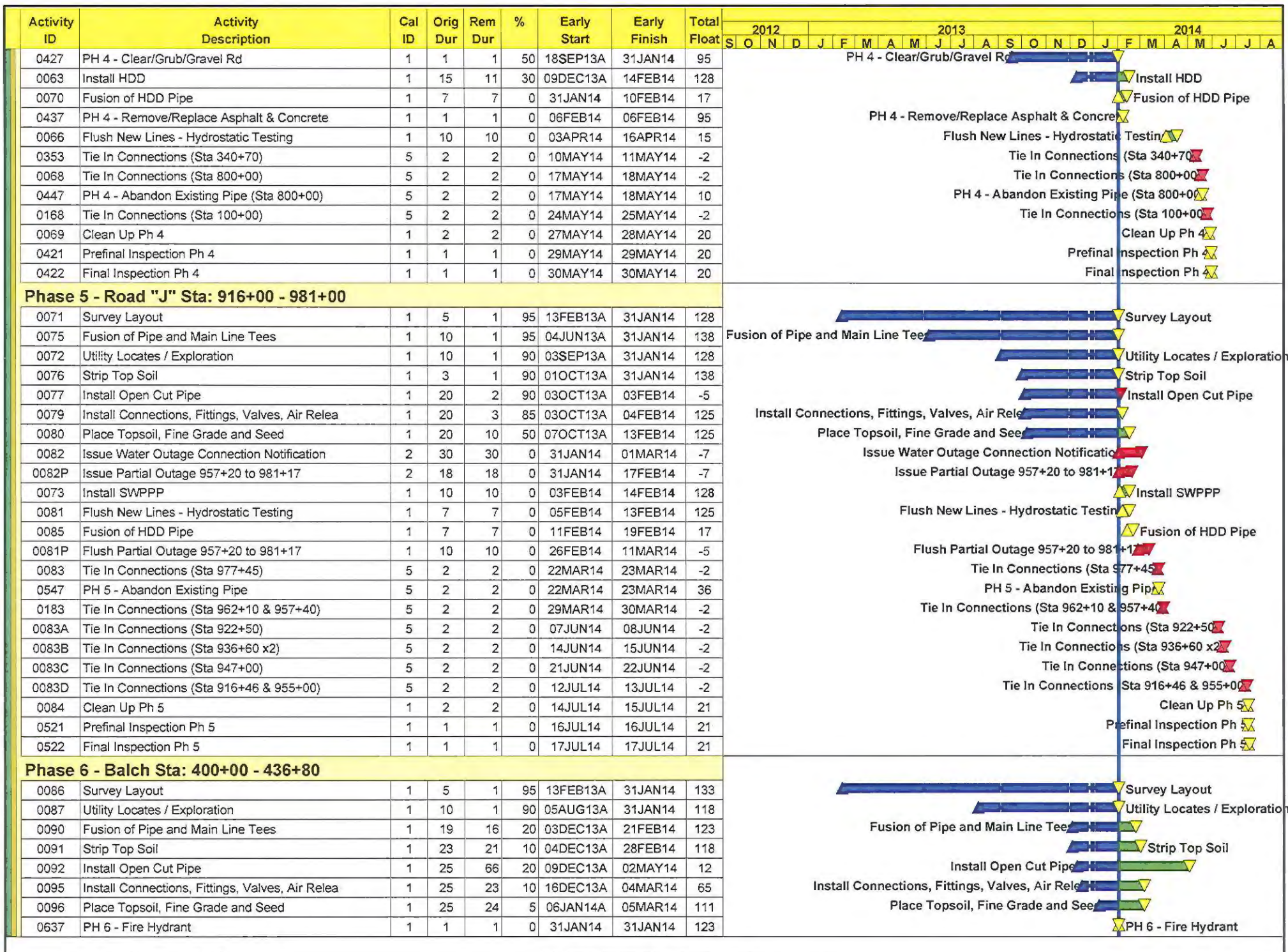
Sauer Incorporated Job #1603

Stennis Waterline Project

Schedule Update

SAUER INCORPORATED

Calendar ID:
 1 = 5-Day Work Week
 2 = 7-Day Work Week
 5 = Weekends



National Aeronautics and
Space Administration
John C. Stennis Space Center
Stennis Space Center, MS 39529-6000



February 22, 2014

Reply to Attn of: **RA10/14-0272CSW**

Sauer Incorporated
Attn: (b)(6)
11223 Phillips Pkwy, Drive East
Jacksonville, FL 32256-1574

Subject: EMI: 11B315-01 Upgrades to Potable Water System. NASA Contract: NNS12AA95T

The following listed contractually required submittal is being returned to your office:

1. Transmittal 134:

Item 1: Bar Chart Base Line Schedule 18 February 2014 – Approved as Submitted.

NOTE: ** "ANY COMMENT(S) THAT RESULT IN A CHANGE TO THE CONTRACT COST, SCOPE, OR SCHEDULE YOU MUST NOTIFY THE CONTRACTING OFFICER FOR APPROVAL PRIOR TO IMPLEMENTATION OR ANY COSTS ARE INCURRED."

If you have any questions, give me a call at 228-688-1179.

A handwritten signature in blue ink, appearing to read "Casey S. Wheeler".

Casey S. Wheeler
Contracting Officer's Representative

Enclosure

cc:
Jacobs-FOSC (b)(6)
(b)(6) Official file



National Aeronautics and Space Administration
 John C. Stennis Space Center
 Stennis Space Center, MS 39529-6000

CONTRACTOR TRANSMITTAL SHEET

DATE
19 February 2014

SHEET 1 OF 1

SECTION I - REQUEST FOR APPROVAL *(To be Initiated by the Contractor)*

TRANSMITTAL OF SHOP DRAWINGS, EQUIPMENT DATA, MATERIAL SAMPLES, OR MANUFACTURER'S CERTIFICATES OF COMPLIANCE
(See Instructions on Reverse)

CONTRACT NO.
NNS12AA95T

NEW SUBMITTAL
 RESUBMITTAL

TO
(b)(6)

FROM
Sauer Inc

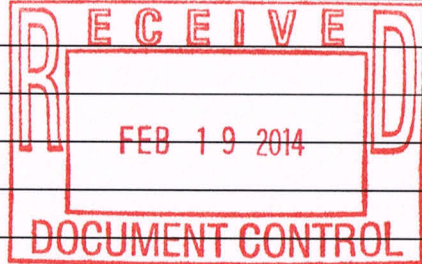
PREVIOUS TRANSMITTAL NO. *(If Any)*
N/A

TRANSMITTAL NO.
134

SPECIFICATION AND SECTION NO. *(Cover Only One Section With Each Transmittal)*
12G00-G020/01 33 00 Bar Chart Base Line Schedule Feb. 2014

PROJECT TITLE AND LOCATION
11B315-01 - Upgrades to the Potable Water System

ITEM NO. (a)	DESCRIPTION OF ITEM SUBMITTED (Type, Size, Model Number, ect.) (See Instruction No. 3) (b)	MANUFACTURER OF ITEM (See Instruction No. 8) (c)	NO. OF COPIES (d)	CONTRACT REFERENCE DOCUMENT		VARIATION (See Instruction No. 6) (g)	ACTION CODE (See Instruction No. 9) (h)
				SPECIFICATION PARAGRAPH NO. (e)	DRAWING SHEET NO. (f)		
	Bar Chart Base Line Schedule 18 February 2014	Sauer, Inc	6	1.6			A



REMARKS
Item 1 - Approved as Submitted.

I certify that the above submitted items have been reviewed in detail and are correct and in strict conformance with the contract drawings and specifications, except as stated.
(b)(6)

 CONTRACTOR

ENCLOSURES RETURNED *(List by Item No.)*
14-0272 CSW
1

SECTION II - APPROVAL ACTION
 NAME, TITLE, AND SIGNATURE OF APPROVING AUTHORITY
 Casey Wheeler *Casey Wheeler*

DATE
3/5/14

Activity ID	Activity Description	Cal ID	Orig Dur	Rem Dur	%	Early Start	Early Finish	Total Float	2014										
									M	APR	MAY	JUN	JUL	AUG	SEP				
Stennis Waterline Project																			
Contract Administration																			
Contract Milestones																			
0116	Project Completion	2	0	0	0		12SEP14	-21											Project Completion
1000	Early Completion	2	0	0	0	13SEP14	12SEP14	-21											Early Completion
Construction																			
Phase 2 - Saturn Sta: 163+00 - 218+80																			
OUT5-WI	Weather Impact Outage 5	5	2	2	0	05APR14*	06APR14	-6											Weather Impact Outage 5
OUT5-A	Outage 5 - Sta 177+67 - Bldg 3305	5	1	1	0	12APR14	12APR14	-6											Outage 5 - Sta 177+67 - Bldg 3305
OUT6-A	Outage 6 - Sta 189+10, 191+46, 218+00	5	1	1	0	26APR14	26APR14	-6											Outage 6 - Sta 189+10, 191+46, 218+00
Phase 3 - Saturn Sta: 100+00 - 163+00																			
OUT8-A	Outage 8 - Sta 155+15, 143+20, 135+35,	5	1	1	0	24MAY14	24MAY14	-6											Outage 8 - Sta 155+15, 143+20, 135+35, 135+42
OUT9-A	Outage 9 - Sta 134+35, 119+36	5	1	1	0	31MAY14	31MAY14	-6											Outage 9 - Sta 134+35, 119+36
OUT10-A	Outage 10 - Sta 340+00 - 12" at Trent Lott	5	1	1	0	07JUN14	07JUN14	-6											Outage 10 - Sta 340+00 - 12" at Trent Lott
OUT12-A	Outage 12 - Sta 100+00, 103+00, 109+10	5	1	1	0	21JUN14	21JUN14	-6											Outage 12 - Sta 100+00, 103+00, 109+10
Phase 4 - Trent Lott, Road "H", Endeavor																			
OUT11-A	Outage 11 - Sta 800+00 - Endeavor Tower	5	1	1	0	14JUN14	14JUN14	-6											Outage 11 - Sta 800+00 - Endeavor Tower
Phase 5 - Road "J" Sta: 916+00 - 981+00																			
OUT7-A	Outage 7 - Sta 997+45, 962+10, 957+40	5	1	1	0	03MAY14	03MAY14	-6											Outage 7 - Sta 997+45, 962+10, 957+40
OUT13-A	Outage 13 - Sta 922+50, 936+60 x 2	5	1	1	0	12JUL14	12JUL14	-6											Outage 13 - Sta 922+50, 936+60 x 2
0083A	Tie In Connections (Sta 922+50)	5	2	2	0	12JUL14	13JUL14	-6											Tie In Connections (Sta 922+50)
0083B	Tie In Connections (Sta 936+60 x2)	5	2	2	0	12JUL14	13JUL14	-6											Tie In Connections (Sta 936+60 x2)
OUT14-A	Outage 14 - Sta 947+00, Ph 7 Sta 610+75,	5	1	1	0	19JUL14	19JUL14	-6											Outage 14 - Sta 947+00, Ph 7 Sta 610+75, 600+4
0083C	Tie In Connections (Sta 947+00)	5	2	2	0	19JUL14	20JUL14	-6											Tie In Connections (Sta 947+00)
OUT15-A	Outage 15 - Sta 916+46, 955+00	5	1	1	0	26JUL14	26JUL14	-6											Outage 15 - Sta 916+46, 955+00
0083D	Tie In Connections (Sta 916+46 & 955+00)	5	2	2	0	26JUL14	27JUL14	-6											Tie In Connections (Sta 916+46 & 955+00)
Phase 6 - Balch Sta: 400+00 - 436+80																			
0097A	Chlorination/De-Chlorination & Samples	1	4	4	0	21JUL14	24JUL14	-14											Chlorination/De-Chlorination & Sample
OUT16-A	Outage 16 - Sta 403+80, 411+35, 415+80	5	1	1	0	02AUG14	02AUG14	-6											Outage 16 - Sta 403+80, 411+35, 415+80
0099	Tie In Connections (Sta 403+80 & 415+80)	5	2	2	0	02AUG14	03AUG14	-6											Tie In Connections (Sta 403+80 & 415+80)
0647	PH 6 - Abandon Existing Pipe (AEP)	2	16	16	0	02AUG14	17AUG14	-21											PH 6 - Abandon Existing Pipe (AEP)
OUT17-A	Outage 17 - Sta 420+50, 423+70, 427+35	5	1	1	0	09AUG14	09AUG14	-6											Outage 17 - Sta 420+50, 423+70, 427+35
OUT18-A	Outage 18 - Sta 407+95, 417+85, 426+35	5	1	1	0	16AUG14	16AUG14	-6											Outage 18 - Sta 407+95, 417+85, 426+35
0657	PH 6 - Salvage Existing Hydrants	1	1	1	0	18AUG14	18AUG14	-15											PH 6 - Salvage Existing Hydrants
0100	Clean Up Ph 6	1	2	2	0	19AUG14	20AUG14	-15											Clean Up Ph 6
0621	Prefinal Inspection Ph 6	1	1	1	0	21AUG14	21AUG14	-15											Prefinal Inspection Ph 6
0622	Final Inspection Ph 6	1	1	1	0	22AUG14	22AUG14	-15											Final Inspection Ph 6

Start Date 10OCT12
 Finish Date 12SEP14
 Data Date 31MAR14
 Run Date 09APR14 14:11

Early Bar
 Progress Bar
 Critical Activity

© Primavera Systems, Inc.

S3Q1 Sheet 1 of 2

Sauer Incorporated Job #1603

Stennis Waterline Project

Critical Path

SAUER INCORPORATED

Calendar ID:
 1 = 5-Day Work Week
 2 = 7-Day Work Week
 5 = Weekends

Activity ID	Activity Description	Cal ID	Orig Dur	Rem Dur	%	Early Start	Early Finish	Total Float	2014							
									M	APR	MAY	JUN	JUL	AUG	SEP	
Phase 7 - NDBC Sta: 600+00 - 630+50																
0113	Tie In Connections (Sta 610+75 & 600+40)	5	2	2	0	19JUL14	20JUL14	-6	Tie In Connections (Sta 610+75 & 600+40)							
Closeout																
0007	Final Inspections	1	5	5	0	25AUG14	29AUG14	-15	Final Inspections							
0008	Punch List	1	5	5	0	01SEP14	05SEP14	-15	Punch List							
0009	Demobilization	1	10	10	0	01SEP14	12SEP14	-15	Demobilization							

Activity ID	Activity Description	Cal ID	Orig Dur	Rem Dur	%	Early Start	Early Finish	Total Float	Budgeted Cost	Cost to Date	Cost this Period	2012 2013 2014												
												O	N	D	J	F	M	A	M	J	J	A	S	O
Stennis Waterline Project																								
Contract Administration																								
Contract Milestones																								
0115	Contract Duration	2	545	90	37	11OCT12A	28JUN14	0	0.00	0.00	0.00	Contract Duration												
0125	Time Extension (Mod 02)	2	19	19	0	29JUN14	17JUL14	0	0.00	0.00	0.00	Time Extension (Mod 02)												
0130	Time Extension (Mod 03)	2	29	29	0	18JUL14	15AUG14	0	0.00	0.00	0.00	Time Extension (Mod 03)												
0140	Time Extension (Mod 04)	2	7	7	0	16AUG14	22AUG14	0	0.00	0.00	0.00	Time Extension (Mod 04)												
0116	Project Completion	2	0	0	0		12SEP14	-21	0.00	0.00	0.00	Project Completion												
1000	Early Completion	2	0	0	0	13SEP14	12SEP14	-21	0.00	0.00	0.00	Early Completion												
Contract Modifications																								
MOD02	FCR-001 thru FCR-011	2	1	1	25	12NOV13A	31MAR14	125	43,649.00	10,912.25	0.00	FCR-001 thru FCR-011												
MOD03	FCR-012 thru FCR-039	2	1	1	88	31JAN14A	31MAR14	125	250,720.00	220,633.60	7,521.60	FCR-012 thru FCR-039												
Preconstruction																								
Submittals																								
0005	Submittal Approvals	1	30	27	10	21SEP12A	06MAY14	76	0.00	0.00	0.00	Submittal Approvals												
0002	Pre-Construction Submittals	2	90	72	20	21SEP12A	10JUN14	73	0.00	0.00	0.00	Pre-Construction Submittals												
0118	Material Procurement (Valves & Fittings)	2	66	7	90	01APR13A	06APR14	106	604,490.00	544,041.00	0.00	Material Procurement												
0004	Drawing Submittals	2	45	36	20	31JUL13A	05MAY14	109	0.00	0.00	0.00	Drawing Submittals												
0120	Welder Certifications	1	10	10	0	31MAR14	11APR14	93	0.00	0.00	0.00	Welder Certifications												
Permits																								
0003	SWPPP	2	60	2	90	01NOV12A	01APR14	143	0.00	0.00	0.00	SWPPP												
Construction																								
Phase 1 - Propellant Sta: 500+00 - 534+80																								
0011	Survey Layout	1	5	1	75	02JAN13A	31MAR14	102	5,630.00	0.00	0.00	Survey Layout												
0013	Install SWPPP	1	10	1	90	08MAY13A	31MAR14	102	0.00	0.00	0.00	Install SWPPP												
0019	Place Topsoil, Fine Grade and Seed	1	14	13	95	18JUN13A	16APR14	70	5,552.00	5,274.40	0.00	Place Topsoil												
0157	PH 1 - Abatement (Outage #2)	5	2	1	80	15FEB14A	05APR14	29	9,961.00	7,968.80	7,968.80	PH 1 - Abatement (Outage #2)												
0147	PH 1 - Abandon Existing Pipe (Outage #2)	5	2	2	0	05APR14	06APR14	34	29,394.00	0.00	0.00	PH 1 - Abandon Existing Pipe (Outage #2)												
0023	Clean Up Ph 1	1	2	2	0	17APR14	18APR14	70	4,000.00	0.00	0.00	Clean Up Ph 1												
0121	Prefinal Inspection Ph 1	1	1	1	0	21APR14	21APR14	70	0.00	0.00	0.00	Prefinal Inspection Ph 1												
0122	Final Inspection Ph 1	1	1	1	0	22APR14	22APR14	70	0.00	0.00	0.00	Final Inspection Ph 1												
Phase 2 - Saturn Sta: 163+00 - 218+80																								
0025	Survey Layout	1	5	1	75	29JAN13A	31MAR14	102	6,803.00	0.00	0.00	Survey Layout												
0039	Fusion of HDD Pipe	1	5	5	0	25APR13A	04APR14	98	0.00	0.00	0.00	Fusion of HDD Pipe												
0027	Install SWPPP	1	10	1	90	05SEP13A	31MAR14	102	0.00	0.00	0.00	Install SWPPP												
0257B	PH 2 - Abatement (Sta 189+60 & 191+41)	5	2	1	50	22FEB14A	05APR14	29	3,320.00	1,660.00	1,660.00	PH 2 - Abatement (Sta 189+60 & 191+41)												
0037A	Tie In Connections (Sta 177+67 & 180+35)	5	2	1	50	15MAR14A	05APR14	-3	1,993.00	996.50	996.50	Tie In Connections (Sta 177+67 & 180+35)												

Start Date: 10OCT12
 Finish Date: 12SEP14
 Data Date: 31MAR14
 Run Date: 09APR14 14:12

Early Bar
 Progress Bar
 Critical Activity

S3Q1

Sheet 1 of 5

Sauer Incorporated Job #1603

Stennis Waterline Project

Pay Request Schedule

SAUER INCORPORATED

Calendar ID:
 1 = 5-Day Work Week
 2 = 7-Day Work Week

Activity ID	Activity Description	Cal ID	Orig Dur	Rem Dur	%	Early Start	Early Finish	Total Float	Budgeted Cost	Cost to Date	Cost this Period	2012 2013 2014												
												2012				2013				2014				
												E	O	N	D	J	F	M	A	M	J	J	A	S
0037C	Tie In Connections (Sta 198+46 & 218+80)	5	2	1	50	15MAR14A	05APR14	35	0.00	0.00	0.00	Tie In Connections (Sta 198+46 & 218+80)												
0247	PH 2 - Abandon Exist Pipe (Sta 163+25 & 177+67)	5	2	2	0	05APR14	06APR14	34	9,798.00	0.00	0.00	PH 2 - Abandon Exist Pipe (Sta 163+25 & 177+67)												
0247A	PH 2 - Abandon Exist Pipe (Sta 177+67 & 189+60)	5	2	2	0	05APR14	06APR14	28	9,798.00	0.00	0.00	PH 2 - Abandon Exist Pipe (Sta 177+67 & 189+60)												
0247B	PH 2 - Abandon Exist Pipe (Sta 189+60 & 180+35)	5	2	2	0	05APR14	06APR14	34	9,798.00	0.00	0.00	PH 2 - Abandon Exist Pipe (Sta 189+60 & 180+35)												
0257A	PH 2 - Abatement (Sta 177+67 & 180+35)	5	2	2	0	05APR14	06APR14	28	3,320.00	0.00	0.00	PH 2 - Abatement (Sta 177+67 & 180+35)												
OUT5-VI	Weather Impact Outage 5	5	2	2	0	05APR14*	06APR14	-6	0.00	0.00	0.00	Weather Impact Outage 5												
OUT5-A	Outage 5 - Sta 177+67 - Bldg 3305	5	1	1	0	12APR14	12APR14	-6	0.00	0.00	0.00	Outage 5 - Sta 177+67 - Bldg 3305												
OUT6-A	Outage 6 - Sta 189+10, 191+46, 218+00	5	1	1	0	26APR14	26APR14	-6	0.00	0.00	0.00	Outage 6 - Sta 189+10, 191+46, 218+00												
0038	Clean Up Ph 2	1	2	2	0	28APR14	29APR14	63	4,000.00	0.00	0.00	Clean Up Ph 2												
0221	Prefinal Inspection Ph 2	1	1	1	0	30APR14	30APR14	63	0.00	0.00	0.00	Prefinal Inspection Ph 2												
0222	Final Inspection Ph 2	1	1	1	0	01MAY14	01MAY14	63	0.00	0.00	0.00	Final Inspection Ph 2												
Phase 3 - Saturn Sta: 100+00 - 163+00																								
0124	Fusion of HDD Pipe	1	5	5	0	07MAY13A	04APR14	3	0.00	0.00	0.00	Fusion of HDD Pipe												
0050	Place Topsoil, Fine Grade and Seed	1	25	3	90	22JUL13A	02APR14	80	8,185.00	7,366.50	0.00	Place Topsoil, Fine Grade and Seed												
0042	Install SWPPP	1	10	1	90	06SEP13A	31MAR14	102	0.00	0.00	0.00	Install SWPPP												
0048	Install Jack and Bore	1	7	5	40	14NOV13A	04APR14	73	95,255.00	38,102.00	0.00	Install Jack and Bore												
FCR15-17	Install FCR 015 & 017	1	32	14	0	04FEB14A	17APR14	-6	0.00	0.00	0.00	Install FCR 015 & 017												
0040	Survey Layout	1	4	4	0	31MAR14	03APR14	99	7,378.00	0.00	0.00	Survey Layout												
0051	Flush New Lines - Hydrostatic Testing	1	10	10	0	18APR14	01MAY14	-6	3,258.00	0.00	0.00	Flush New Lines - Hydrostatic Testing												
0053	Tie In Connections (Sta 130+20)	5	2	2	0	10MAY14	11MAY14	-4	4,359.00	0.00	0.00	Tie In Connections (Sta 130+20)												
0347	PH 3 - Abandon Pipe (Sta 130+20)	5	2	2	0	10MAY14	11MAY14	-4	9,798.00	0.00	0.00	PH 3 - Abandon Pipe (Sta 130+20)												
0357	PH 3 - Abatement (Sta 130+20)	5	2	2	0	10MAY14	11MAY14	-4	3,321.00	0.00	0.00	PH 3 - Abatement (Sta 130+20)												
0153	Tie In Connections (Sta 134+56, 135+35 & 143+30)	5	2	2	0	17MAY14	18MAY14	-4	0.00	0.00	0.00	Tie In Connections (Sta 134+56, 135+35 & 143+30)												
OUT8-A	Outage 8 - Sta 155+15, 143+20, 135+35, 135+46	5	1	1	0	24MAY14	24MAY14	-6	0.00	0.00	0.00	Outage 8 - Sta 155+15, 143+20, 135+35, 135+46												
0253	Tie In Connections (Sta 143+30)	5	2	2	0	24MAY14	25MAY14	-4	0.00	0.00	0.00	Tie In Connections (Sta 143+30)												
OUT9-A	Outage 9 - Sta 134+35, 119+36	5	1	1	0	31MAY14	31MAY14	-6	0.00	0.00	0.00	Outage 9 - Sta 134+35, 119+36												
0053A	Tie In Connections (Sta 119+36 & 155+15)	5	2	2	0	31MAY14	01JUN14	-4	4,359.00	0.00	0.00	Tie In Connections (Sta 119+36 & 155+15)												
0347A	PH 3 - Abandon Exist Pipe (Sta 119+36 & 155+15)	5	2	2	0	31MAY14	01JUN14	-4	9,798.00	0.00	0.00	PH 3 - Abandon Exist Pipe (Sta 119+36 & 155+15)												
0357A	PH 3 - Abatement (Sta 119+36 & 155+15)	5	2	2	0	31MAY14	01JUN14	-4	3,320.00	0.00	0.00	PH 3 - Abatement (Sta 119+36 & 155+15)												
OUT10-A	Outage 10 - Sta 340+00 - 12" at Trent Lott	5	1	1	0	07JUN14	07JUN14	-6	0.00	0.00	0.00	Outage 10 - Sta 340+00 - 12" at Trent Lott												
OUT12-A	Outage 12 - Sta 100+00, 103+00, 109+10	5	1	1	0	21JUN14	21JUN14	-6	0.00	0.00	0.00	Outage 12 - Sta 100+00, 103+00, 109+10												
0053B	Tie In Connections (Sta 103+00 & 109+10)	5	2	2	0	21JUN14	22JUN14	-4	4,358.00	0.00	0.00	Tie In Connections (Sta 103+00 & 109+10)												
0347B	PH 3 - Abandon Exist Pipe (Sta 103+00 & 109+10)	5	2	2	0	21JUN14	22JUN14	8	9,798.00	0.00	0.00	PH 3 - Abandon Exist Pipe (Sta 103+00 & 109+10)												
0357B	PH 3 - Abatement (Sta 103+00 & 109+10)	5	2	2	0	21JUN14	22JUN14	8	3,320.00	0.00	0.00	PH 3 - Abatement (Sta 103+00 & 109+10)												
0054	Clean Up Ph 3	1	2	2	0	23JUN14	24JUN14	24	4,000.00	0.00	0.00	Clean Up Ph 3												
0321	Prefinal Inspection Ph 3	1	1	1	0	25JUN14	25JUN14	24	0.00	0.00	0.00	Prefinal Inspection Ph 3												
0322	Final Inspection Ph 3	1	1	1	0	26JUN14	26JUN14	24	0.00	0.00	0.00	Final Inspection Ph 3												
Phase 4 - Trent Lott, Road "H", Endeavor																								
0060	Fusion of Pipe and Main Line Tees	1	15	1	95	03JUN13A	31MAR14	102	148,622.00	141,190.90	0.00	Fusion of Pipe and Main Line Tees												
0061	Strip Top Soil	1	20	1	95	12AUG13A	31MAR14	102	1,562.00	1,483.90	0.00	Strip Top Soil												
0062	Install Open Cut Pipe	1	25	2	95	12AUG13A	01APR14	101	103,367.00	98,198.65	0.00	Install Open Cut Pipe												
0064	Install Connections, Fittings, Valves, Air Relea	1	18	4	80	12AUG13A	03APR14	28	96,744.00	77,395.20	0.00	Install Connections, Fittings, Valves, Air Relea												
0065	Place Topsoil, Fine Grade and Seed	1	25	3	90	23AUG13A	02APR14	80	9,944.00	8,949.60	0.00	Place Topsoil, Fine Grade and Seed												
0058	Install SWPPP	1	10	3	75	09SEP13A	02APR14	100	0.00	0.00	0.00	Install SWPPP												
0427	PH 4 - Clear/Grub/Gravel Rd	1	1	1	50	18SEP13A	31MAR14	78	2,130.00	1,065.00	0.00	PH 4 - Clear/Grub/Gravel Rd												

Activity ID	Activity Description	Cal ID	Orig Dur	Rem Dur	%	Early Start	Early Finish	Total Float	Budgeted Cost	Cost to Date	Cost this Period	2012 2013 2014												
												E	O	N	D	J	F	M	A	M	J	J	A	S
0096	Place Topsoil, Fine Grade and Seed	1	25	24	5	06JAN14A	01MAY14	60	6,067.00	303.35	0.00	Place Topsoil, Fine Grade and Seed												
0637	PH 6 - Fire Hydrant	1	1	1	0	31MAR14	31MAR14	72	3,101.00	0.00	0.00	PH 6 - Fire Hydrant												
0092A	Resume Install Open Cut Pipe	1	0	0	0	31MAR14*		103	0.00	0.00	0.00	Resume Install Open Cut Pipe												
0098	Issue Water Outage Connection Notification	2	30	30	0	31MAR14	29APR14	37	0.00	0.00	0.00	Issue Water												
0088	Install SWPPP	1	5	5	0	07APR14	11APR14	93	0.00	0.00	0.00	Install SWPPP												
0094	Install Jack and Bore	1	20	20	0	14APR14	09MAY14	73	89,505.00	0.00	0.00	Install Jack and Bore												
0097	Flush New Lines - Hydrostatic Testing	1	8	8	0	04JUN14	13JUN14	3	2,333.00	0.00	0.00	Flush New Lines - Hydrostatic Testing												
0097A	Chlorination/De-Chlorination & Samples	1	4	4	0	21JUL14	24JUL14	-14	0.00	0.00	0.00	Chlorination/De-Chlorination & Sample												
OUT16-A	Outage 16 - Sta 403+80, 411+35, 415+80	5	1	1	0	02AUG14	02AUG14	-6	0.00	0.00	0.00	Outage 16 - Sta 403+80, 411+35, 415+80												
0099	Tie In Connections (Sta 403+80 & 415+80)	5	2	2	0	02AUG14	03AUG14	-6	5,865.00	0.00	0.00	Tie In Connections (Sta 403+80 & 415+80)												
0099A	Tie In Connections (Sta 411+35)	5	2	2	0	02AUG14	03AUG14	-6	0.00	0.00	0.00	Tie In Connections (Sta 411+35)												
0647	PH 6 - Abandon Existing Pipe (AEP)	2	16	16	0	02AUG14	17AUG14	-21	44,738.00	0.00	0.00	PH 6 - Abandon Existing Pipe (AEP)												
OUT17-A	Outage 17 - Sta 420+50, 423+70, 427+35	5	1	1	0	09AUG14	09AUG14	-6	0.00	0.00	0.00	Outage 17 - Sta 420+50, 423+70, 427+35												
0099B	Tie In Connections (Sta 420+50 & 423+70)	5	2	2	0	09AUG14	10AUG14	-6	0.00	0.00	0.00	Tie In Connections (Sta 420+50 & 423+70)												
OUT18-A	Outage 18 - Sta 407+95, 417+85, 426+35	5	1	1	0	16AUG14	16AUG14	-6	0.00	0.00	0.00	Outage 18 - Sta 407+95, 417+85, 426+35												
0099C	Tie In Connections (Sta 427+35 & 426+35)	5	2	2	0	16AUG14	17AUG14	-6	0.00	0.00	0.00	Tie In Connections (Sta 427+35 & 426+35)												
0099D	Tie In Connections (Sta 407+95 & 417+85)	5	2	2	0	16AUG14	17AUG14	-6	0.00	0.00	0.00	Tie In Connections (Sta 407+95 & 417+85)												
0657	PH 6 - Salvage Existing Hydrants	1	1	1	0	18AUG14	18AUG14	-15	3,680.00	0.00	0.00	PH 6 - Salvage Existing Hydrant												
0100	Clean Up Ph 6	1	2	2	0	19AUG14	20AUG14	-15	4,000.00	0.00	0.00	Clean Up Ph 6												
0621	Prefinal Inspection Ph 6	1	1	1	0	21AUG14	21AUG14	-15	0.00	0.00	0.00	Prefinal Inspection Ph 6												
0622	Final Inspection Ph 6	1	1	1	0	22AUG14	22AUG14	-15	0.00	0.00	0.00	Final Inspection Ph 6												
Phase 7 - NDBC Sta: 600+00 - 630+50																								
0106	Fusion of Pipe and Main Line Tees	1	10	1	90	04SEP13A	31MAR14	32	48,648.00	43,783.20	0.00	Fusion of Pipe												
0102	Survey Layout	1	5	3	50	09SEP13A	02APR14	29	6,803.00	3,401.50	0.00	Survey Layout												
0104	Install SWPPP	1	5	5	0	03APR14	09APR14	29	0.00	0.00	0.00	Install SWPPP												
0107	Strip Top Soil	1	2	2	0	04JUN14	05JUN14	-9	1,562.00	0.00	0.00	Strip Top Soil												
0747	PH 7 - Unsuitable Materials	1	4	4	0	05JUN14	10JUN14	47	57,087.00	0.00	0.00	PH 7 - Unsuitable Materials												
0108	Install Open Cut Pipe	1	15	15	0	05JUN14	25JUN14	-9	56,898.00	0.00	0.00	Install Open Cut Pipe												
0109	Install Connections, Fittings, Valves, Air Relea	1	15	15	0	05JUN14	25JUN14	32	45,972.00	0.00	0.00	Install Connections, Fittings, Valves, Air Relea												
0112	Issue Water Outage Connection Notification	2	30	30	0	05JUN14	04JUL14	-14	0.00	0.00	0.00	Issue Water Outage Connection Notification												
0110	Place Topsoil, Fine Grade and Seed	1	15	15	0	09JUN14	27JUN14	35	5,205.00	0.00	0.00	Place Topsoil, Fine Grade and Seed												
0737	PH 7 - Fire Hydrant	1	1	1	0	19JUN14	19JUN14	36	1,550.00	0.00	0.00	PH 7 - Fire Hydrant												
0111	Flush New Lines - Hydrostatic Testing	1	5	5	0	26JUN14	02JUL14	32	1,799.00	0.00	0.00	Flush New Lines - Hydrostatic Testing												
0113	Tie In Connections (Sta 610+75 & 600+40)	5	2	2	0	19JUL14	20JUL14	-6	4,600.00	0.00	0.00	Tie In Connections (Sta 610+75 & 600+40)												
0757	PH 7 - Abatement (Sta 610+75 & 600+40)	5	2	2	0	19JUL14	20JUL14	8	8,630.00	0.00	0.00	PH 7 - Abatement (Sta 610+75 & 600+40)												
0114	Clean Up Ph 7	1	2	2	0	21JUL14	22JUL14	21	4,000.00	0.00	0.00	Clean Up Ph 7												
0721	Prefinal Inspection Ph 7	1	1	1	0	23JUL14	23JUL14	21	0.00	0.00	0.00	Prefinal Inspection Ph 7												
0722	Final Inspection Ph 7	1	1	1	0	24JUL14	24JUL14	21	0.00	0.00	0.00	Final Inspection Ph 7												
Closeout																								
0131	Safety Award Bid Item 007	1	1	1	25	20MAY13A	31MAR14	102	25,000.00	6,250.00	0.00	Safety Award												
0132	Safety Award Deduction	1	1	1	0	31MAR14	31MAR14	102	-1,000.00	0.00	0.00	Safety Award Deduction												
0119	Final As-Builts	1	1	1	0	14JUL14	14JUL14	14	3,892.00	0.00	0.00	Final As-Builts												
0007	Final Inspections	1	5	5	0	25AUG14	29AUG14	-15	0.00	0.00	0.00	Final Inspections												
0008	Punch List	1	5	5	0	01SEP14	05SEP14	-15	1,900.00	0.00	0.00	Punch List												

Activity ID	Activity Description	Cal ID	Orig Dur	Rem Dur	%	Early Start	Early Finish	Total Float	Budgeted Cost	Cost to Date	Cost this Period	2012 2013 2014												
												E	O	N	D	J	F	M	A	M	J	J	A	S
0009	Demobilization	1	10	10	0	01SEP14	12SEP14	-15	10,000.00	0.00	0.00	Demobilization												
		1	501	118	50	21SEP12A	12SEP14	-15	2,658,127.00	1,583,729.25	82,406.90													

National Aeronautics and
Space Administration
John C. Stennis Space Center
Stennis Space Center, MS 39529-6000



April 24, 2014

Reply to Attn of: **RA10/14-0733CSW**

Sauer Incorporated
Attn: (b)(6)
11223 Phillips Pkwy, Drive East
Jacksonville, FL 32256-1574

Subject: EMI: 11B315-01 Upgrades to Potable Water System. NASA Contract: NNS12AA95T

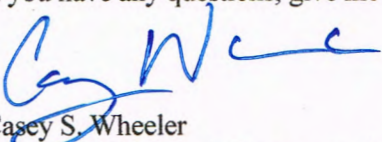
The following listed contractually required submittal is being returned to your office:

Transmittal 157:

Item 1: Base Line Bar Chart Critical Path April 2014 – Receipt Acknowledged.
Bar Chart Pay Request Schedule

NOTE: ** "ANY COMMENT(S) THAT RESULT IN A CHANGE TO THE CONTRACT COST, SCOPE, OR SCHEDULE YOU MUST NOTIFY THE CONTRACTING OFFICER FOR APPROVAL PRIOR TO IMPLEMENTATION OR ANY COSTS ARE INCURRED."

If you have any questions, give me a call at 228-688-1179.



Casey S. Wheeler
Contracting Officer's Representative

Enclosure

cc:
Jacobs-FOSC (b)(6)
(b)(6) Official file

CONTRACTOR TRANSFER

Contract
Number

SPOT CHECKS / OR APPROV

to be filled by the Contractor
Contract #

LAW OFFICE

TRAINING EQUIPMENT

OFFICIAL COMPLIANCE

2AA65T

SECURITY

RESERVED

Insurance Coverage

PREVIOUS TRANSFER

INITIAL

(b)(6)

CONTRACTOR INFORMATION

Contract

PROJECT # / PROJECT LOCATION

2605-002000

Upgrades

Portable

System

Description

Quantity

MANUFACTURER

TECHNICAL SPECIFICATIONS

WARRANTY

STATUS

100

50

50

50

50

50

50

50

Approved Schedule

N/A

N/A



NOTES

Item [redacted] of [redacted]

I certify that the above information is true and correct to the best of my knowledge.

(b)(6)

[redacted]

PROVIDER

FIRST SIGNATURE

SIGNATURE

APPROVAL AUTHORITY

[Signature]

[Signature]

[Signature]

National Aeronautics and
Space Administration
John C. Stennis Space Center
Stennis Space Center, MS 39529-6000



October 11, 2012

Reply to Attn of: **Office of Procurement**

Sauer Incorporated
11223 Phillips Pkwy, Drive East
Jacksonville, FL 32256-1574

Subject: Notice to Proceed, Task Order NNS12AA95T

This is your notification that the official date to proceed on the subject task order is **October 10, 2012**. In accordance with the task order, you shall complete all work, including clean up, within **545 calendar days** from receipt of this notice to proceed, for a completion date of **June 28, 2014**.

Questions regarding this "Notice to Proceed" may be directed to Jason F. Edge, Office of Procurement, Code DA00, Stennis Space Center, MS 39529-6000.

Please acknowledge receipt of this document on the copy of this letter containing the "Acknowledgement of Receipt" block and return to this office.

A handwritten signature in cursive script that reads "Beth L. Bradley".

Beth L. Bradley
Contracting Officer

cc: RA71/Dale Woolridge

ACKNOWLEDGEMENT OF RECEIPT
OF NOTICE TO PROCEED ON
TASK ORDER NNS12AA95T

(b)(6)

DATE: 10/12/12