



NASA Education Program Evaluation Requirements for Awardees

Patricia Moore Shaffer
Evaluation Manager
NASA Office of Education

September 22, 2015

On the Immediate Horizon

- **New FY2017 API** focused on ensuring that independent evaluations are conducted and reported by awardees
- New agency strategic plan in place by FY2018, with ECC-level planning in FY2016 for *new* performance goals and ***outcome-focused APIs*** beginning this fall

FY2017 Expectations for Awardees

- **Performance data** supporting NASA Annual Performance Indicators and program/project-specific metrics
- Use of **independent evaluation** to assess outcomes and demonstrate progress toward achieving program/project objectives

Awardee Evaluation: Approach

- Strengthen **evaluation requirements** across all program solicitations, including use of independent evaluators
- Offer **technical assistance** to awardees supporting evaluation planning during application and post-award phases
- Require **reporting** on evaluation activities, including submission and/or public posting of evaluation reports

Recent Actions

- **MUREP MIRO:** New awardee requirement to submit evaluation plan in advance for review
- **Internal SEAP Competition:** Awardees required to submit an activity-specific logic model and evaluation plan in advance for review



National Aeronautics and
Space Administration

Success Story

▼ Login

CP4SMPVC

Competitive Program for Science Museums, Planetariums, and NASA Visitor Centers

Home

Map of Awardees

Program Information

Browse Projects

Browse Products

Stories From the Field

Museum Alliance



Children's Museum of Indianapolis - Flight Adventures Educator's Guide

Through the Curious Scientific Investigators (CSI): Flight Adventures project, students will learn that aircraft models are tools we use to explore the science of flight and will become aviators by building, testing, and flying model aircraft. Award # NNX10AK16A



MAP OF AWARDEES ►



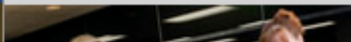
PROGRAM INFORMATION

NASA Research Announcement
2015 CP4SMPVC Number
NNH15ZHA001N proposals are
due December 7, 2015.



LEARN ABOUT PROJECTS

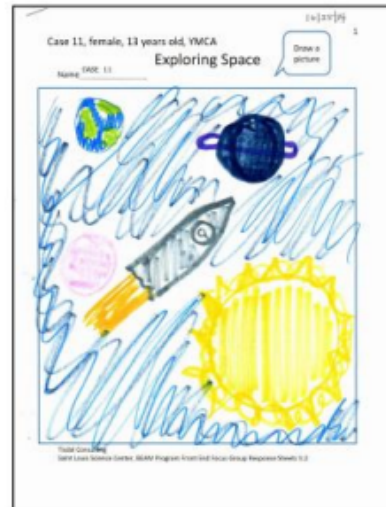
View descriptions of all awarded
projects from 2008-present.



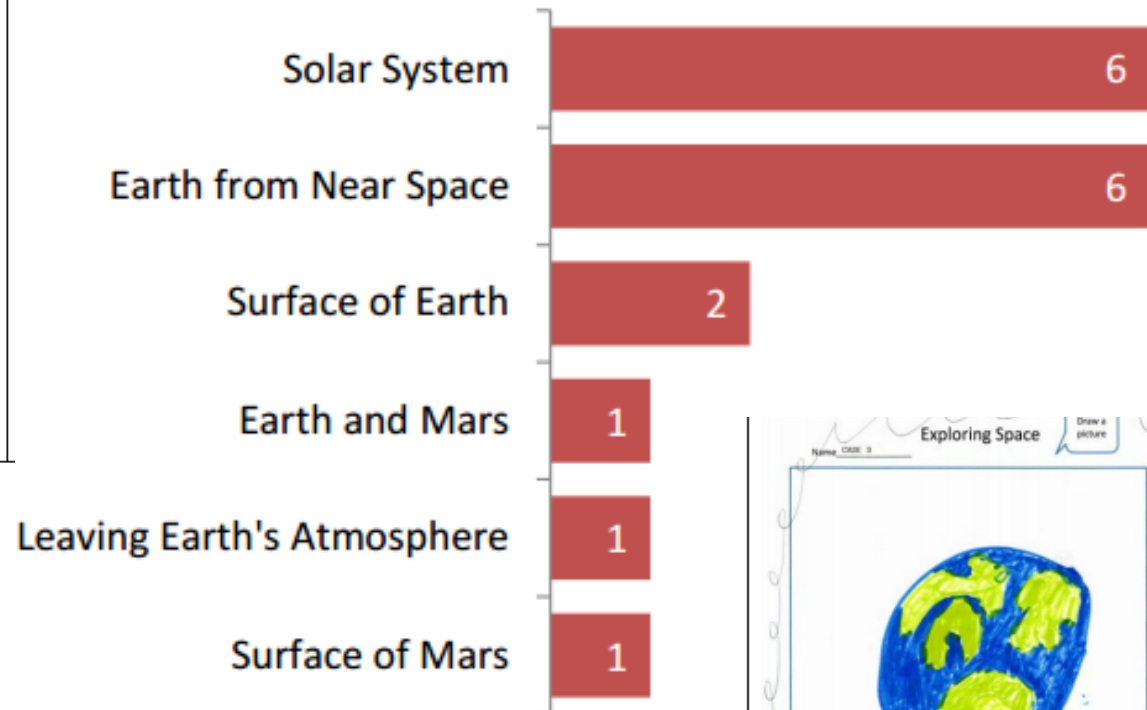
Success Story: CP4SMPVC+

Bridging Earth and Mars (BEAM) Program Front-end Evaluation

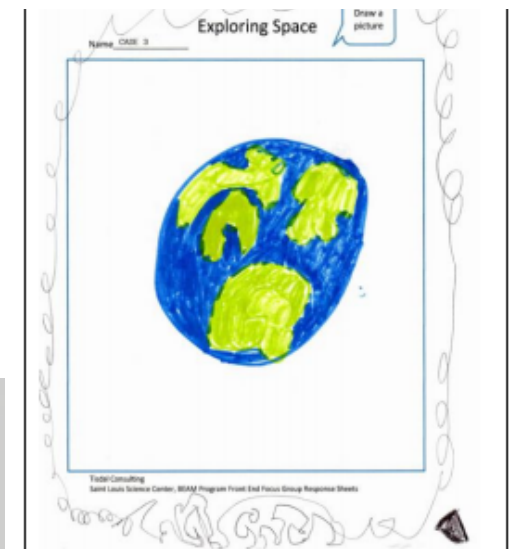
Conducted for
Saint Louis Science Center
St. Louis, Missouri
Carey E. Tisdal
Tisdal Consulting
February 12, 2015



How do students think about space exploration?



Finding: Older respondents appeared to view space exploration from the perspective of the Solar System, while younger children seemed to view it from Earth orbit.



FY2015 CP4SMPVC+ Competition

- Enhanced evaluation requirements include:
 - Use of independent evaluator
 - Minimum 8% of project budget dedicated to evaluation



Awardee Evaluation: Phased Rollout

•

FY2015 -Begin to adjust solicitation requirements
-Initiate awardee guidance/training

FY2016 -Continue adjustment of solicitation
requirements and awardee guidance/training
across portfolio
-Begin review of awardee evaluation plans
-Begin collection and review of awardee
evaluation reports

FY2017 -Full implementation expected

Other Updates

- Space Grant: Independent report pending on recommendations for improvement of performance measurement and proposed evaluation plan to assess national program

Visit NASA Education Performance Assessment

<http://www.nasa.gov/offices/education/performance/>