



S T E M **INSPIRE - ENGAGE - EDUCATE - EMPLOY**
    **The Next Generation of Explorers**

FY 19/20 Performance Measurement Strategy, Framework, and Measures

August 27, 2018

Performance Measure Development Key Takeaways



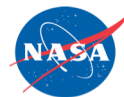
Four key takeaways from the development of candidate performance measures:

1. Comprehensive Performance Management Strategy
2. Supports Agency Level STEM Engagement (SE) Strategy
3. Rigorous Performance Monitoring
4. Collaborative and Evidence-Based Approach

AGENDA

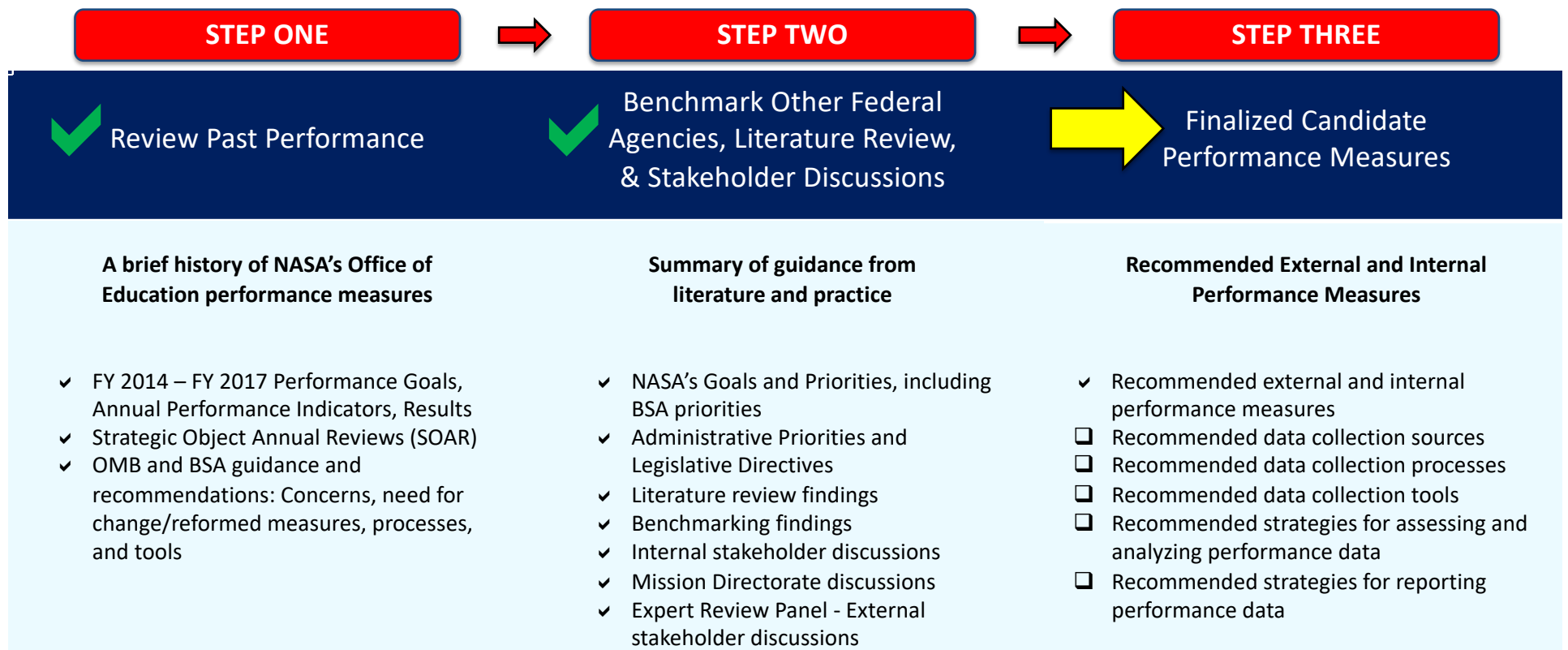


- Performance Assessment Strategy Development
- Office of STEM Engagement Performance Assessment Framework
- FY19 and FY20 Candidate Performance Goals and Annual Performance Indicators

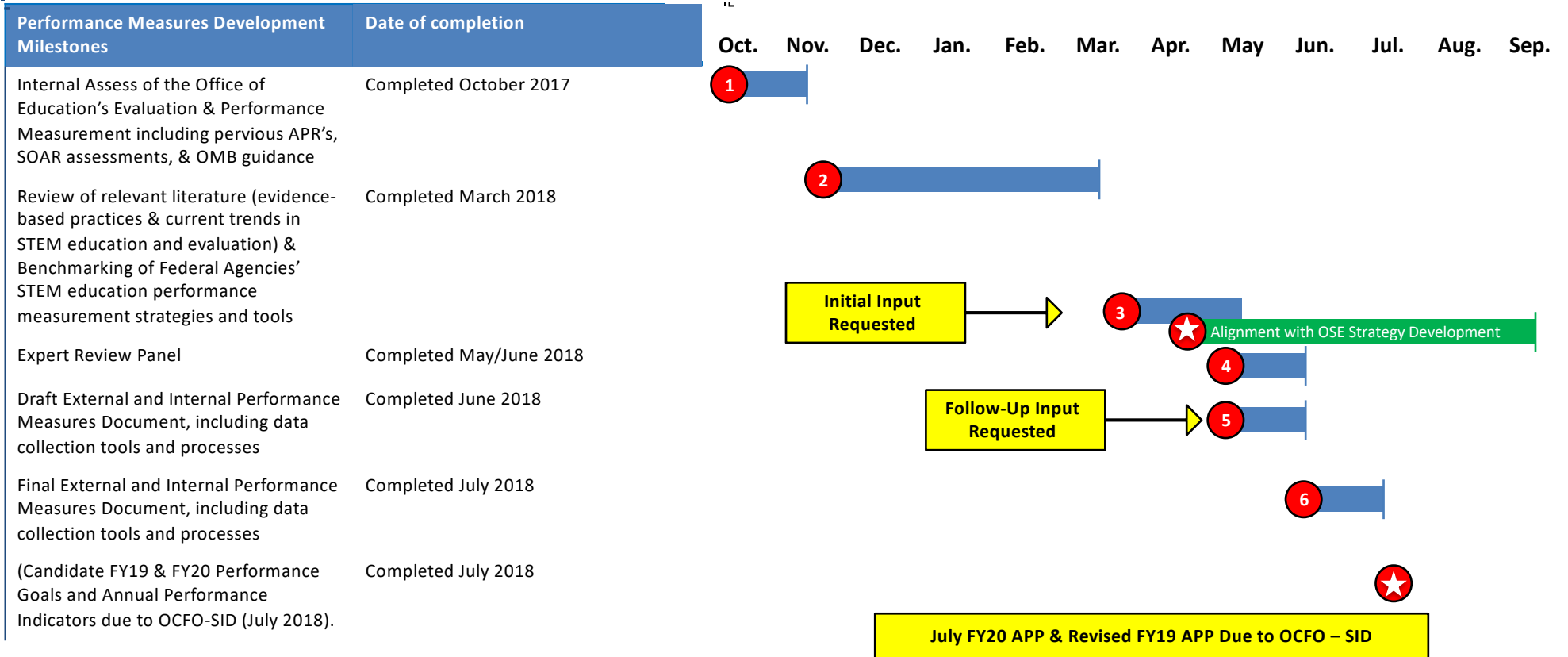


Performance Assessment Strategy Development

External and Internal Performance Measures Development Process



External and Internal Performance Measures Development Schedule





Office of STEM Engagement Performance Assessment Framework

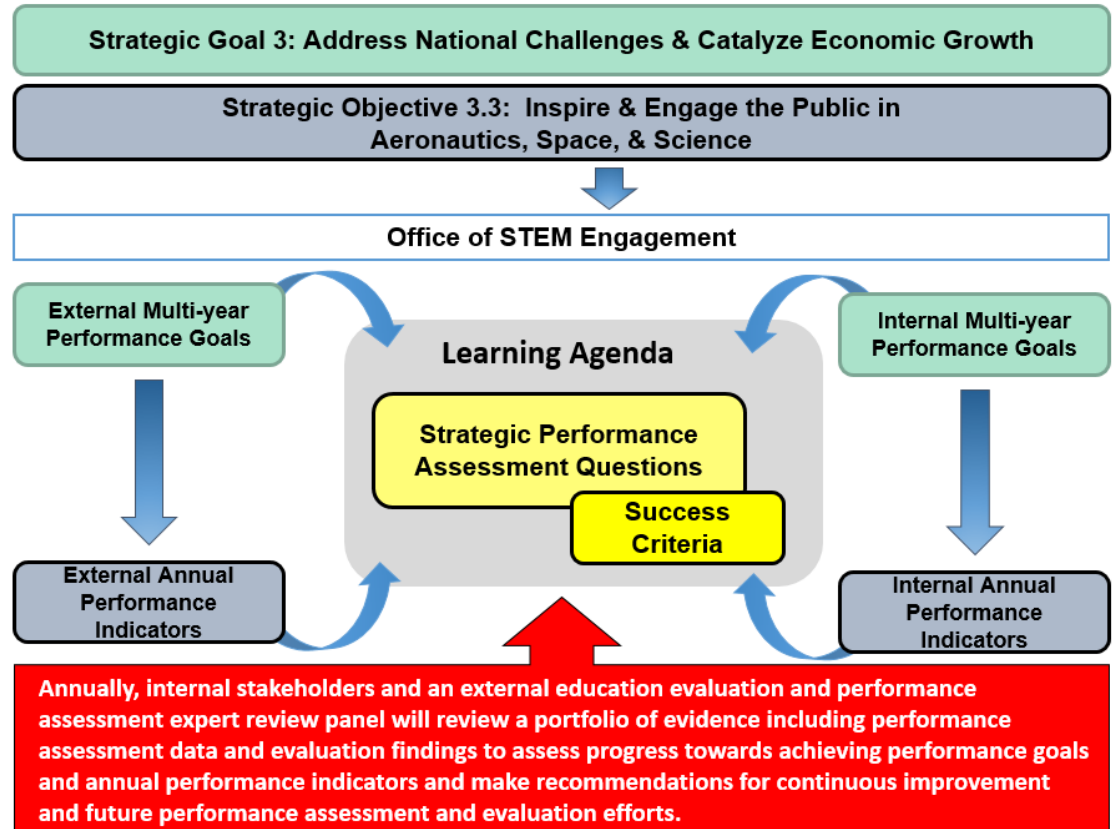
Traditional Performance Assessment Strategy

2018 NASA Strategic Plan

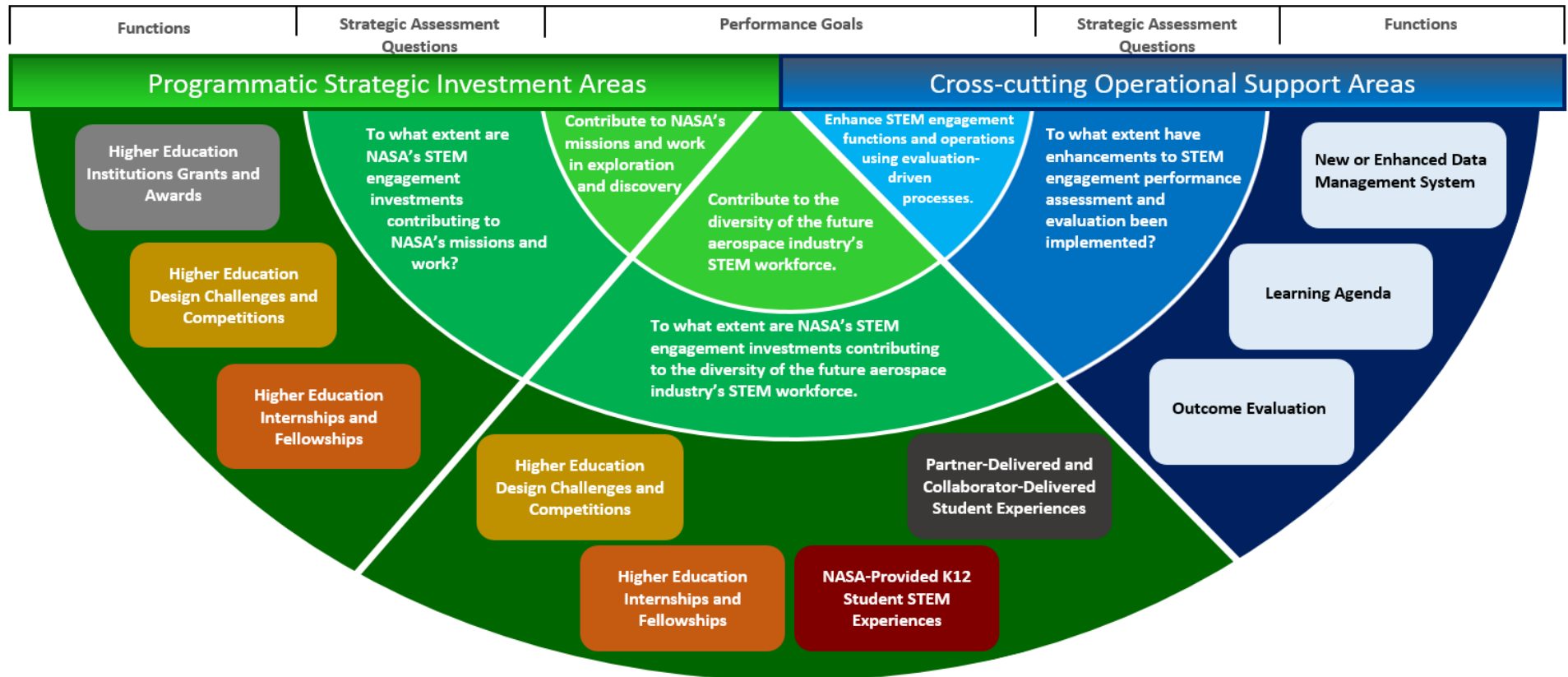


FY 2019 – 2022 OE/OSE Performance Assessment Strategy

2018 NASA Strategic Plan



FY19 & FY20 Office of Education/STEM Engagement Performance Assessment Model



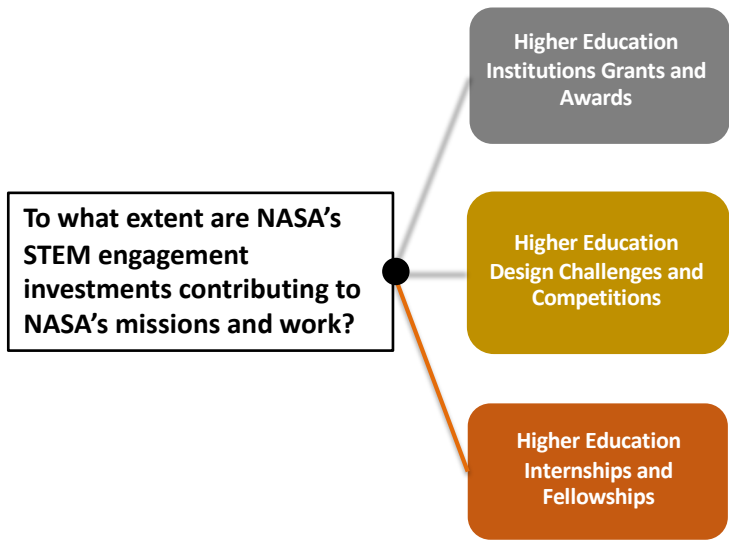
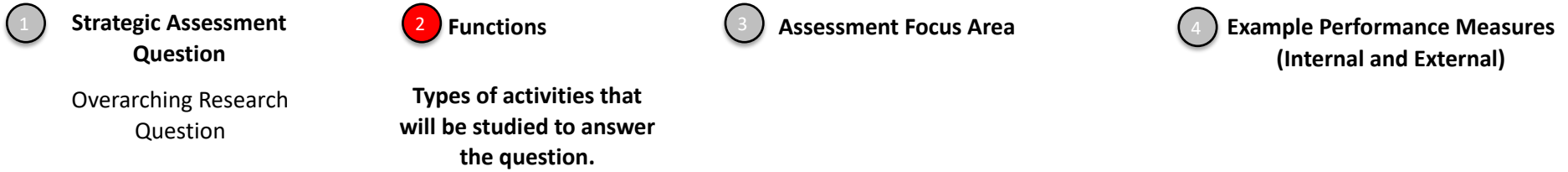
PG: 3.3.5: Provide opportunities for students to contribute to NASA's aeronautics, space, and science missions and work in exploration and discovery.



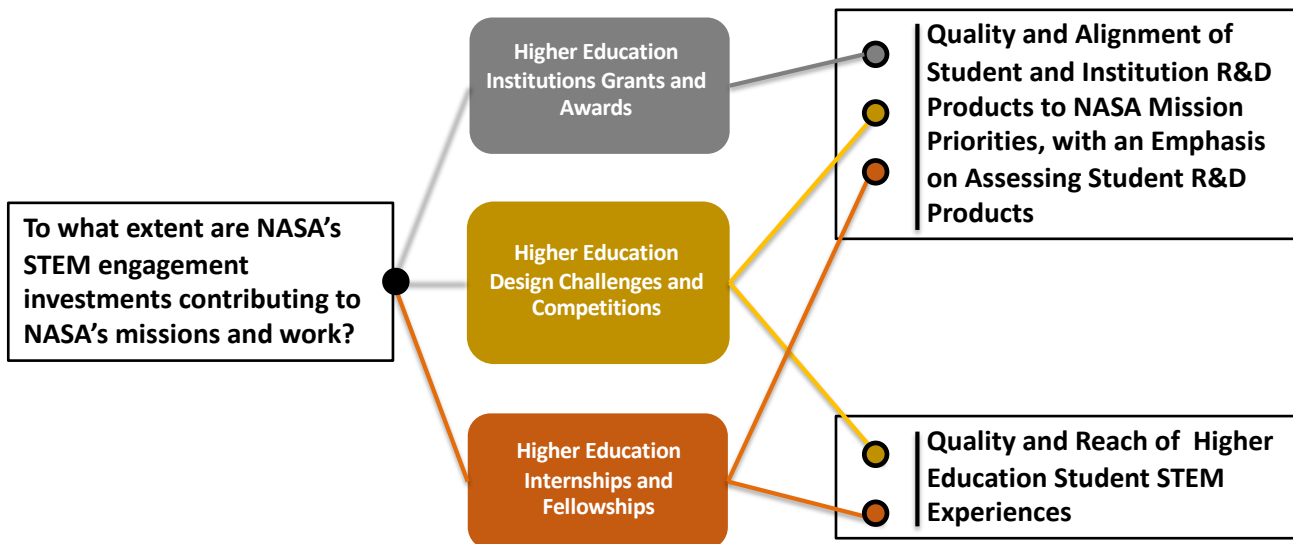
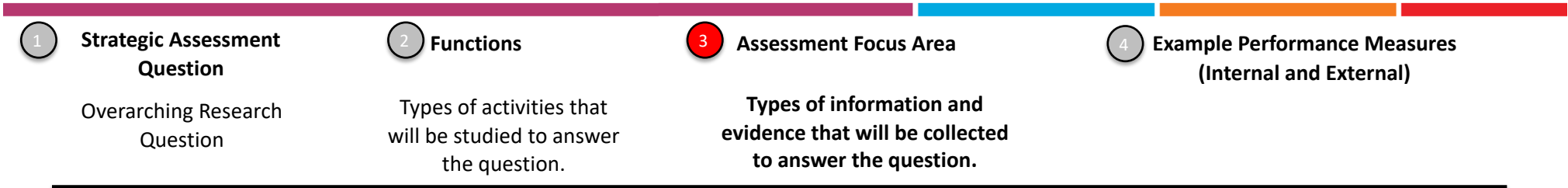
-
- 1 **Strategic Assessment Question**
Overarching Research Question
 - 2 Functions
 - 3 Assessment Focus Area
 - 4 Example Performance Measures (Internal and External)
-

To what extent are NASA's STEM engagement investments contributing to NASA's missions and work?

PG: 3.3.5: Provide opportunities for students to contribute to NASA's aeronautics, space, and science missions and work in exploration and discovery.



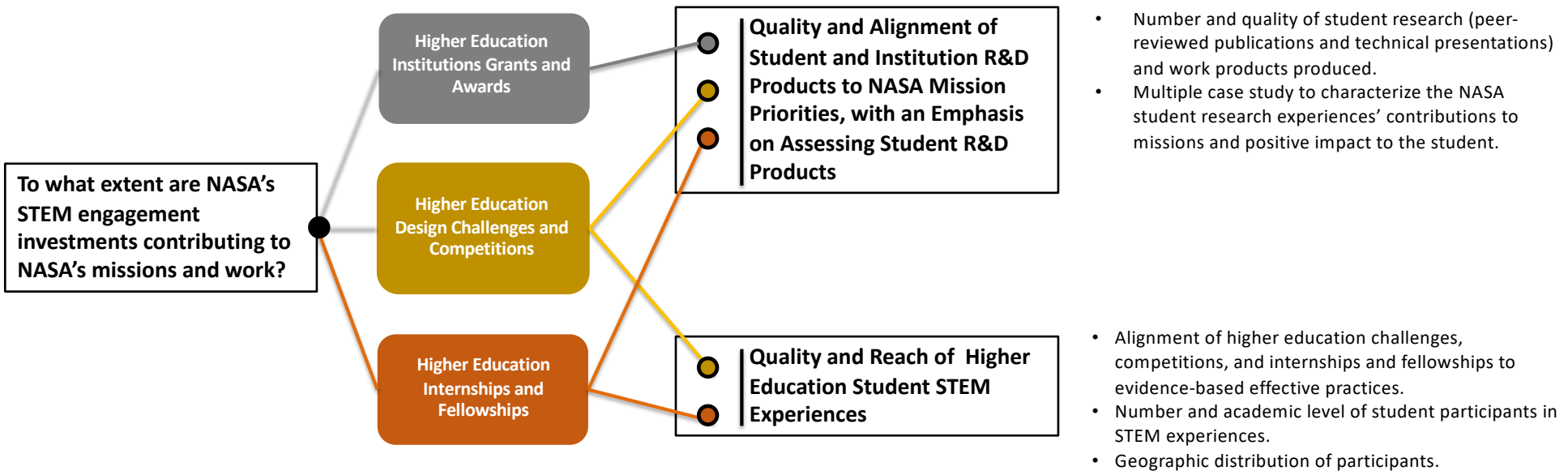
PG: 3.3.5: Provide opportunities for students to contribute to NASA's aeronautics, space, and science missions and work in exploration and discovery.



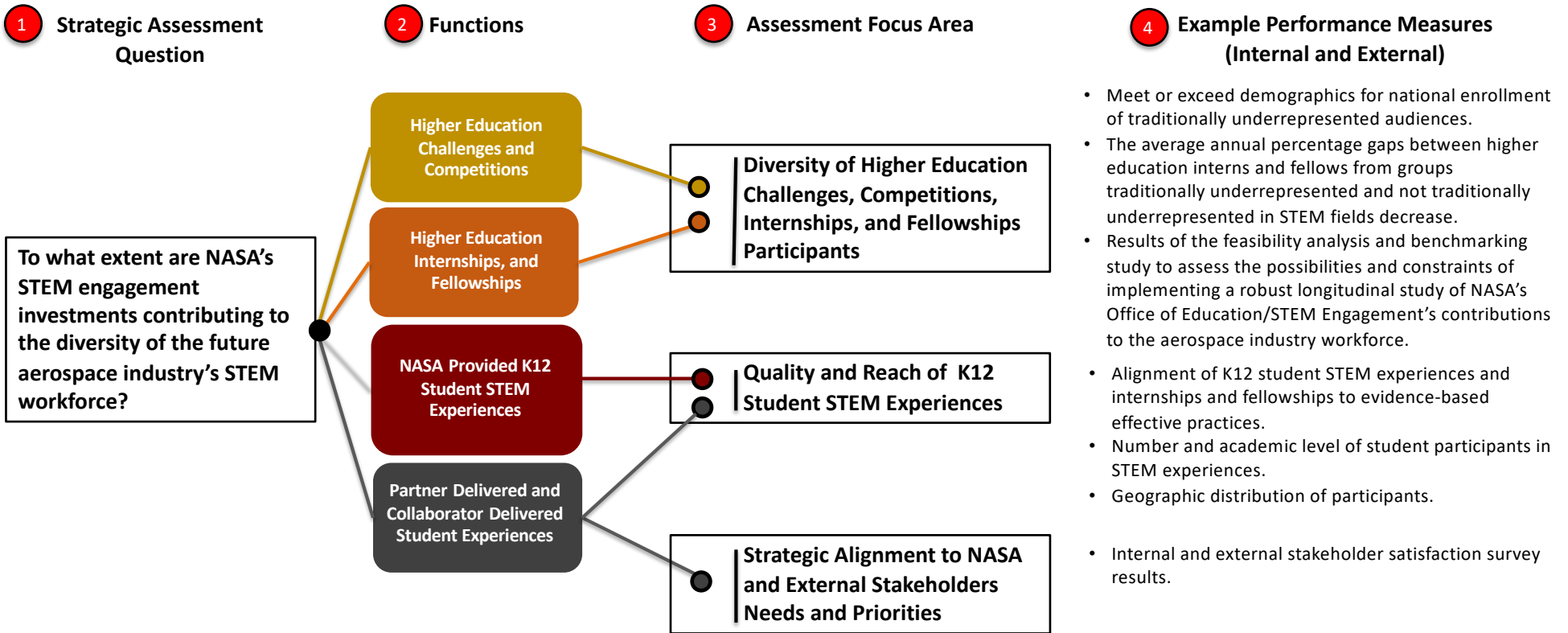
PG: 3.3.5: Provide opportunities for students to contribute to NASA’s aeronautics, space, and science missions and work in exploration and discovery.



| 1 Strategic Assessment Question Overarching Research Question | 2 Functions Types of activities that will be studied to answer the question. | 3 Assessment Focus Area Types of information and evidence that will be collected to answer the question. | 4 Example Performance Measures (Internal and External) Specific performance measures that will be used to answer the question (output, outcome, or milestone) |
|--|---|---|--|
|--|---|---|--|



PG: 3.3.3: Provide opportunities for students to engage with NASA’s aeronautics, space, and science people, content, and facilities in support of a diverse future NASA and aerospace industry workforce.



PG: 3.3.4: Enhance the effectiveness of education investments using performance assessment and evaluation-driven processes.

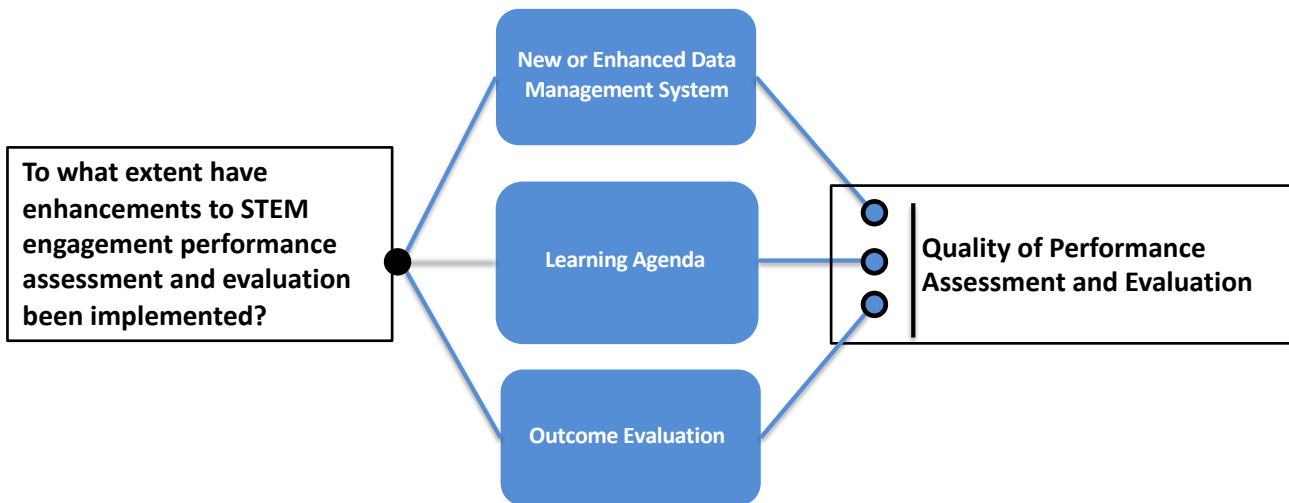


1 Strategic Assessment Question

2 Functions

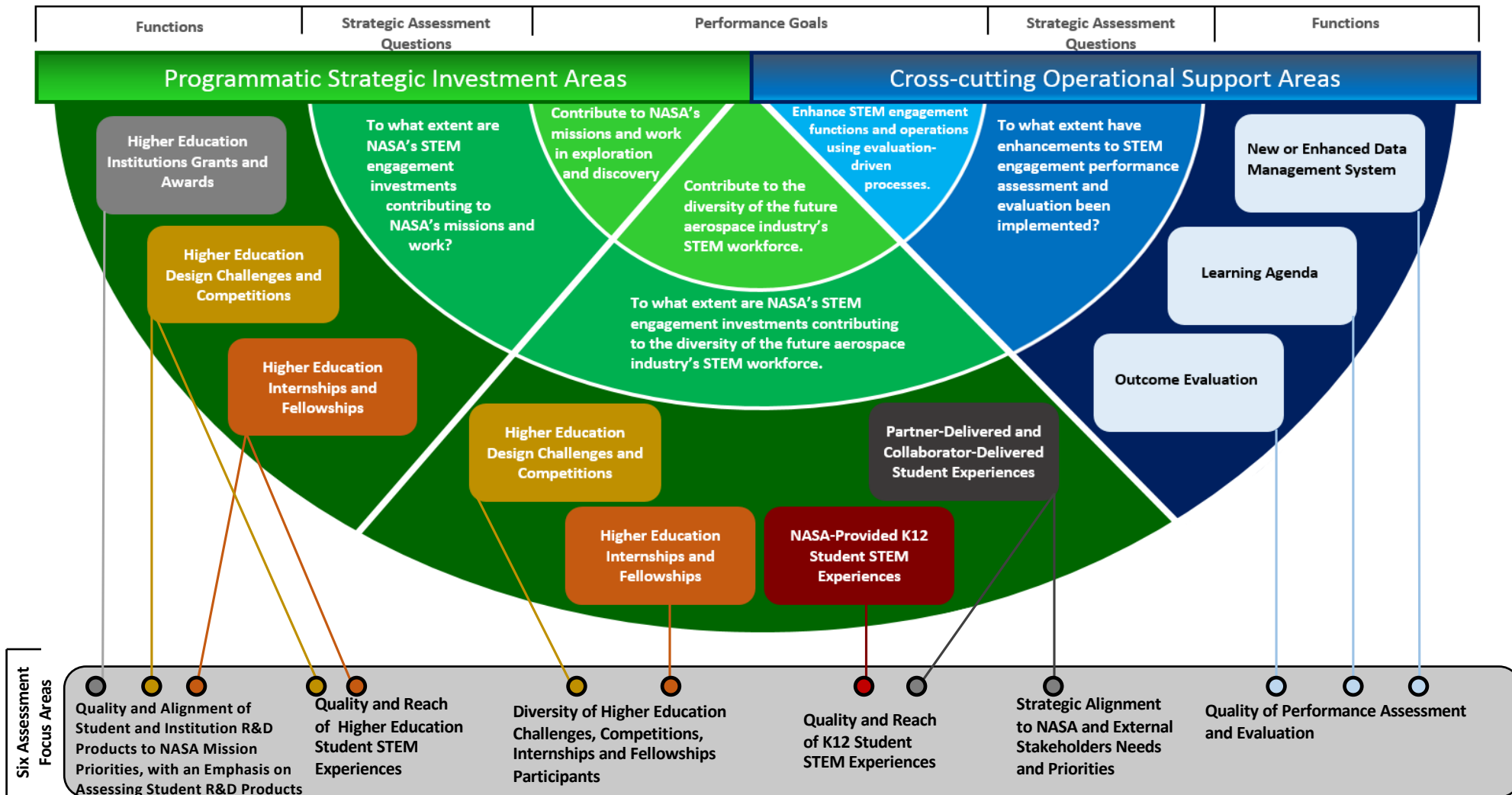
3 Assessment Focus Area

4 Example Performance Measures (Internal and External)

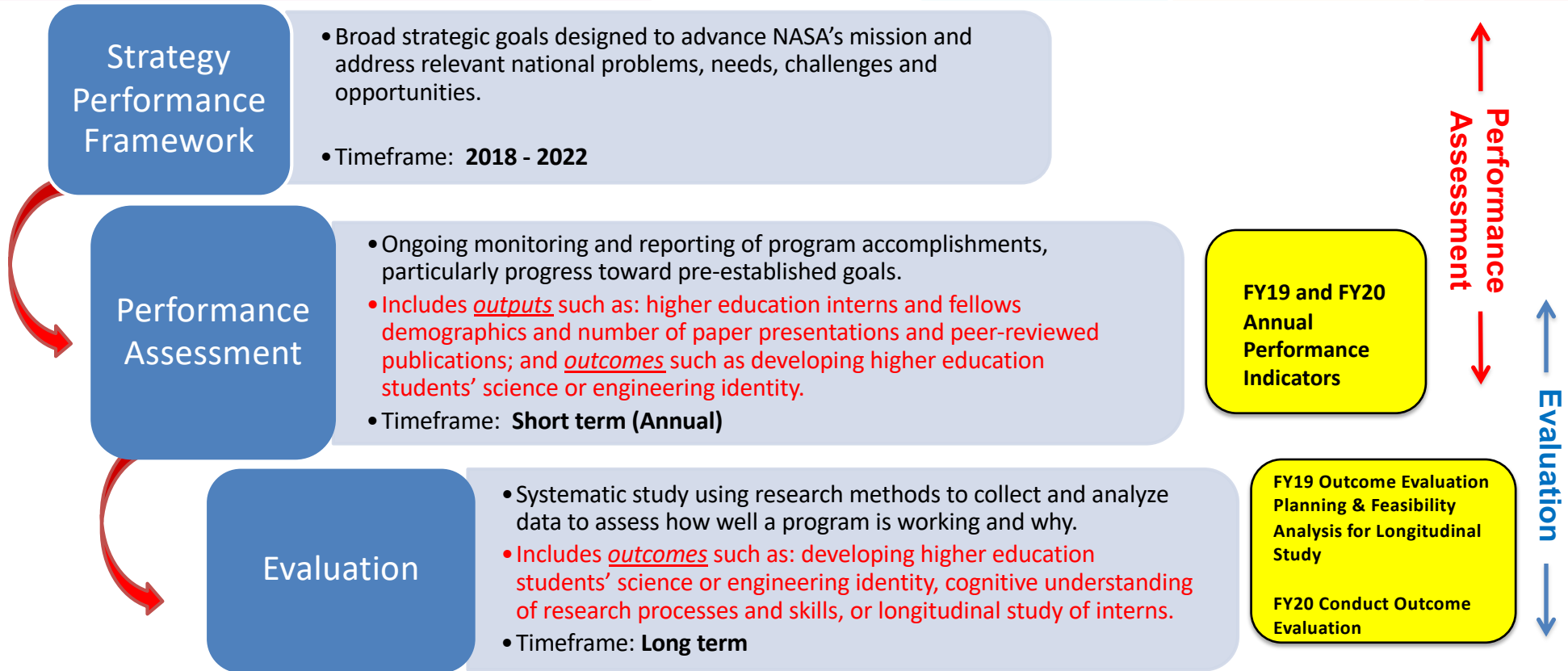


- Define requirements and pilot test a performance system to align with new measures.
- Develop a Learning Agenda that includes: a) enhanced performance assessment strategy, b) business process for third party evaluations, c) business process for evidence-based project-level decision making and d) business process for compliance with federal mandates on data collection.
- Establish a process to refine strategic assessment questions and performance measures as a result of findings from data collection cycle and maturation of Agency SEC Portfolio.
- Conduct a pilot outcome assessment of higher education challenges and competitions.

FY19 & FY20 Office of Education/STEM Engagement Performance Assessment Model



Assessing the Impact of NASA's STEM Engagement Investments: Performance Assessment & Evaluation Overview





Questions