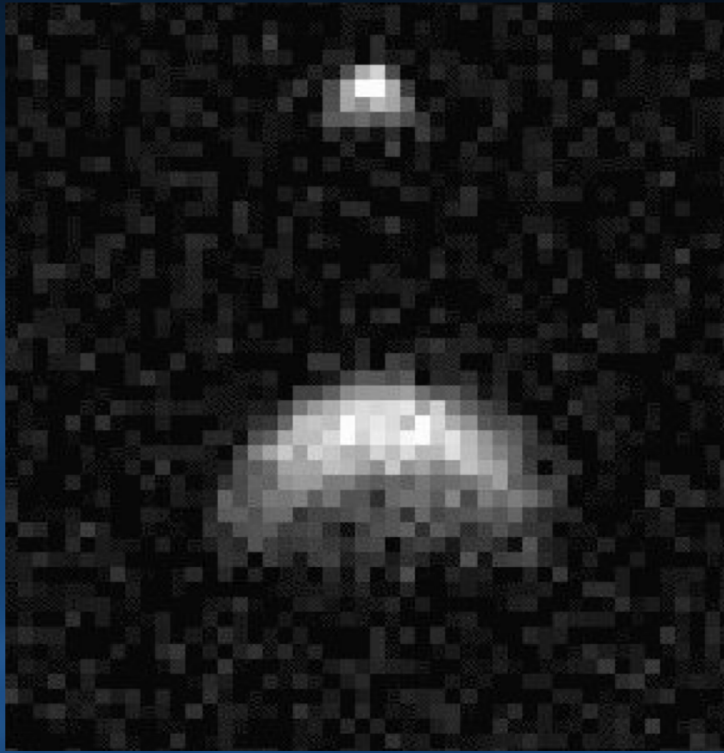


Radar Shows that Potentially Hazardous Asteroid 2018 EB is a Binary



Radar imagery from Arecibo (above) and Goldstone revealed that 2018 EB is a binary asteroid. It approached Earth at 15.4 times the Earth-Moon distance on October 7, 2018.

Asteroid 2018 EB was discovered by NEOWISE on April 4, 2018. Its potentially hazardous orbit (below) is just outside of and inclined to Earth's orbit, which afforded the opportunity to observe it again 6 months after discovery.

