

Commercial Generic Bioprocessing Apparatus Science Insert-03 (CSI-03)

By Andrea & Carlie

Investigation Dates: October 2008- March 2010

Expeditions Assigned: 18, 21/22



What are they investigating?

- # They are comparing a painted lady butterfly's life cycle in microgravity to a painted lady butterfly's life cycle on Earth. They are also investigating the ability of an orb weaving spider to live in space. They will compare how the orb weaving spider differs in feeding, behavior, and comparing web spinning in microgravity to web spinning of a spider of the same species on Earth.*

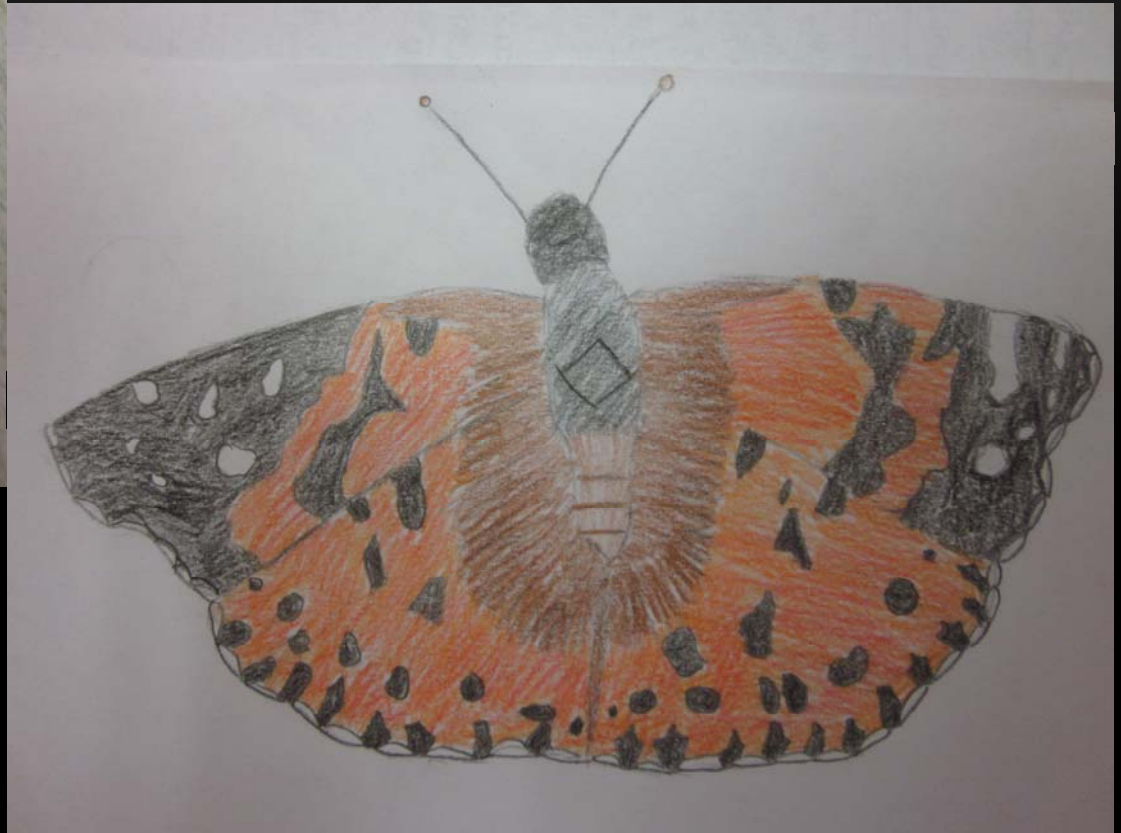
Requirements for investigation

NASA will have to control their temperature. It also will require images and data daily for these investigations.

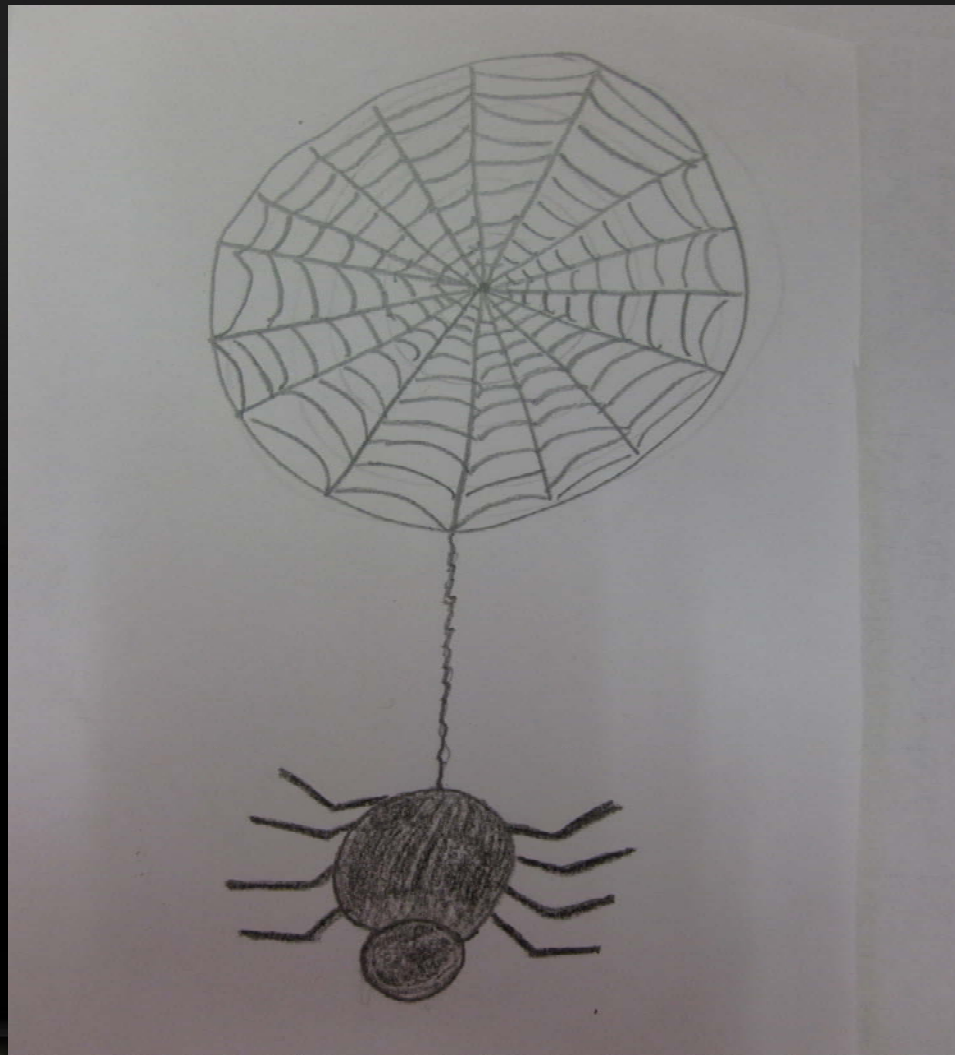
How does this investigation help scientists and children?

- # This investigation will help scientists understand the growth of organisms in microgravity and how microgravity can affect organisms. It also helps kids be scientists, engineers, and astronauts for the space program known as NASA.*

Painted Lady Butterflies



Orb Weaving Spider



What we learned

This investigation was good for us because we learned so many things we didn't know before. Here are the things we learned: We learned that a painted lady butterfly is basically a Monarch butterfly. We also learned what a pupa is and it is like a cocoon. The most interesting thing we learned is how to work as a team and how to use each other's ideas together.

