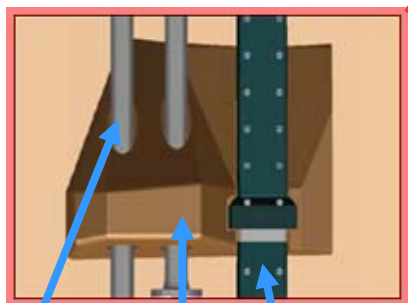




# LO<sub>2</sub>, Intertank, and LH<sub>2</sub> Ice/Frost Ramps Staging Locations

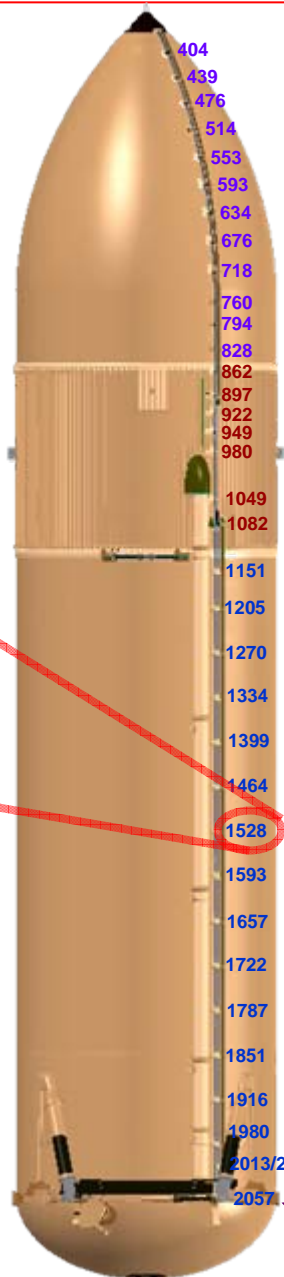
Typical IFR Configuration (STA 1528)



pressurization lines

ice/frost ramp

cable tray



LO<sub>2</sub> Ice/Frost Ramps (12)

Intertank Ice/Frost Ramps (7)

LH<sub>2</sub> Ice/Frost Ramps (16)

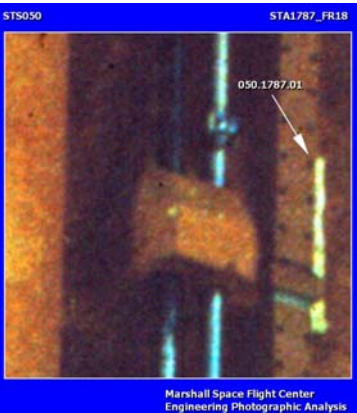
STA 2058 is hidden behind a strut and can not be imaged at External Tank separation.



# Top Ten LH<sub>2</sub> Ice/Frost Ramp Foam Loss Events

## STS-50

Location: STA 1787  
Visible Area: 35.9 in<sup>2</sup>  
Longest Dimension: 20.9 in  
Mass: 0.121 lbs



## STS-94

Location: STA 1528  
Visible Area: 84.9 in<sup>2</sup>  
Longest Dimension: 12.8 in  
Mass: 0.081 lbs



## STS-77

Location: STA 1464  
Visible Area: 24. in<sup>2</sup>  
Longest Dimension: 9.7 in  
Mass: 0.063 lbs



## STS-101

Location: STA 1851  
Visible Area: 34.3 in<sup>2</sup>  
Longest Dimension: 7.6 in  
Mass: 0.051 lbs



## STS-77

Location: STA 1528  
Visible Area: 72 in<sup>2</sup>  
Longest Dimension: 11 in  
Mass: 0.038 lbs



## STS-91

Location: STA 1464  
Visible Area: 25.9 in<sup>2</sup>  
Longest Dimension: 6.5 in  
Mass: 0.035 lbs



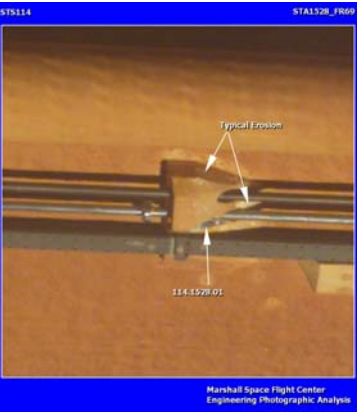
## STS-94

Location: STA 1593  
Visible Area: 32.4 in<sup>2</sup>  
Longest Dimension: 13 in  
Mass: 0.030 lbs



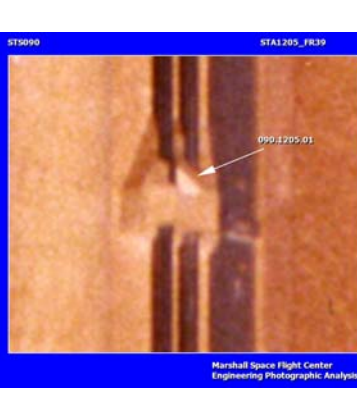
## STS-114

Location: STA 1528  
Visible Area: 8.4 in<sup>2</sup>  
Longest Dimension: 5.8 in  
Mass: 0.026 lbs



## STS-90

Location: STA 1205  
Visible Area: 13.7 in<sup>2</sup>  
Longest Dimension: 4.5 in  
Mass: 0.022 lbs



## STS-95

Location: STA 1851  
Visible Area: 46.1 in<sup>2</sup>  
Longest Dimension: 9.6 in  
Mass: 0.022 lbs

