

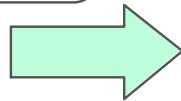
Mapping to Support Organizational Learning: Integrating Multiple KM Practices

Presented by Barbara Phillip, Ph.D.
Office of the Chief Knowledge Officer(OCKO)
NASA/Goddard Space Flight Center

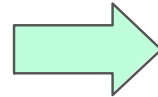
June 21, 2010

Mapping to Support Organizational Learning Integrating Multiple KM Practices at the local level

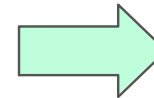
Organizational
Setting



Pilot Activity
(2009-present)



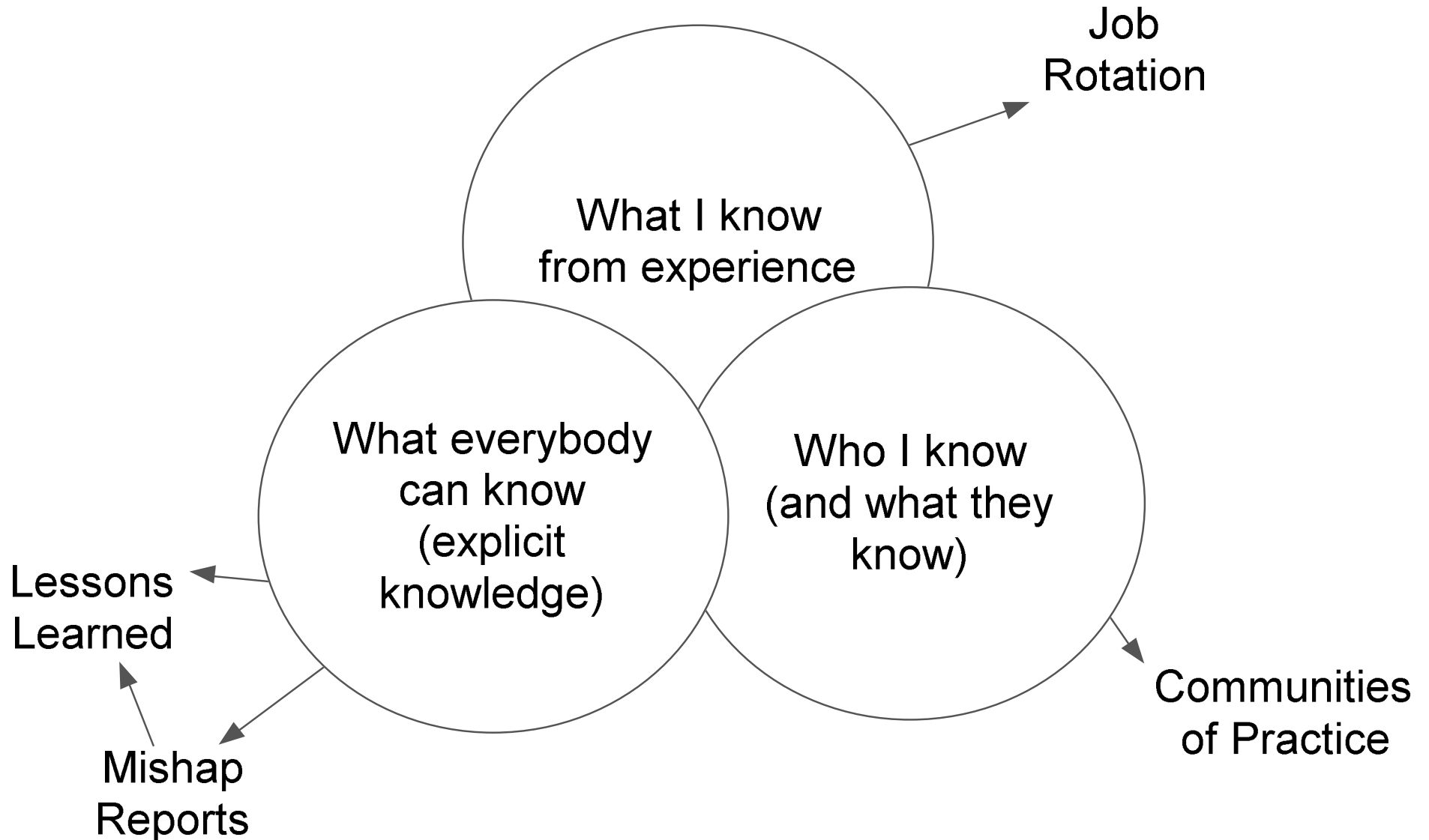
Lessons



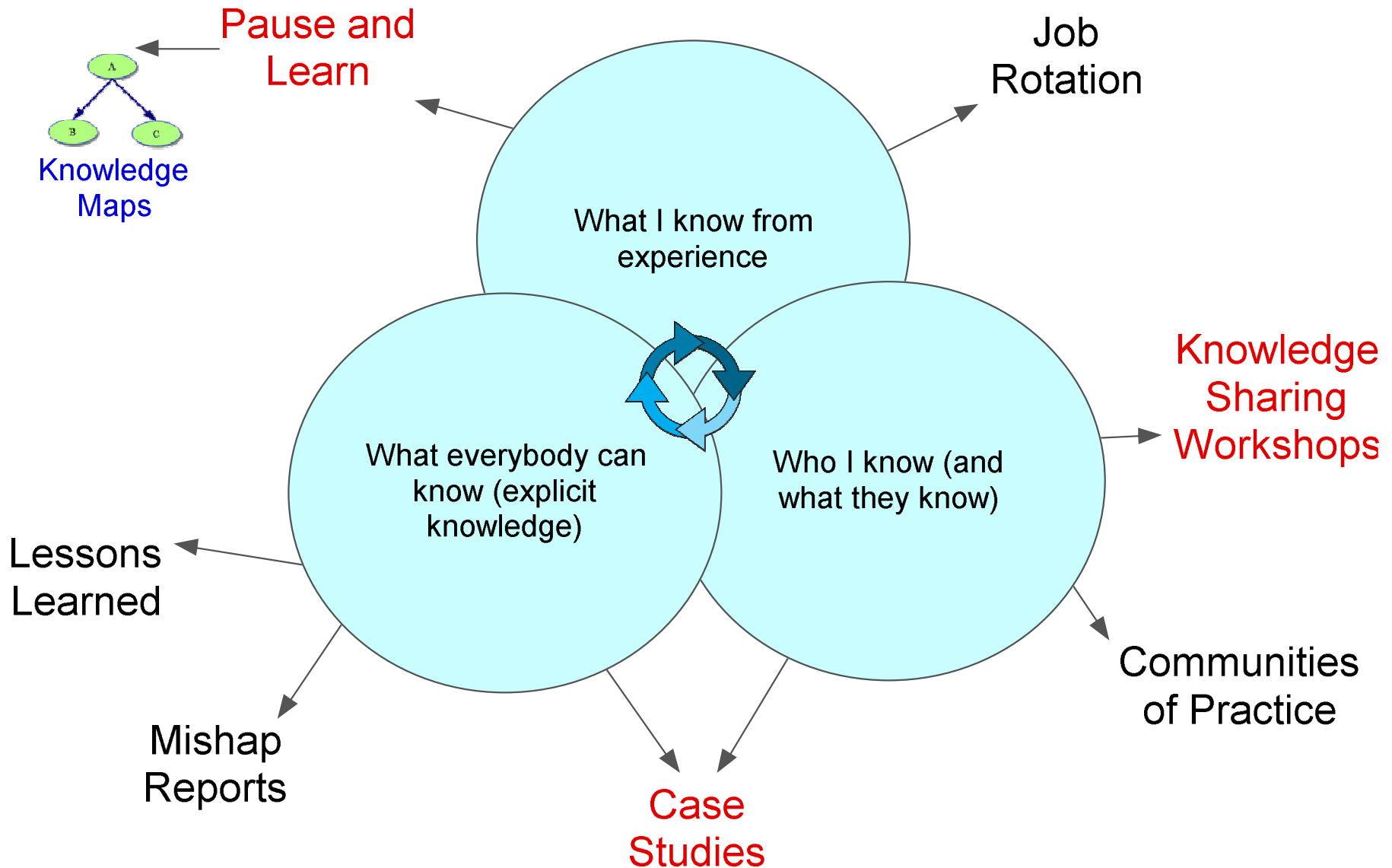
Questions
& Demo

... to ensure the circulation of knowledge
within and across project teams

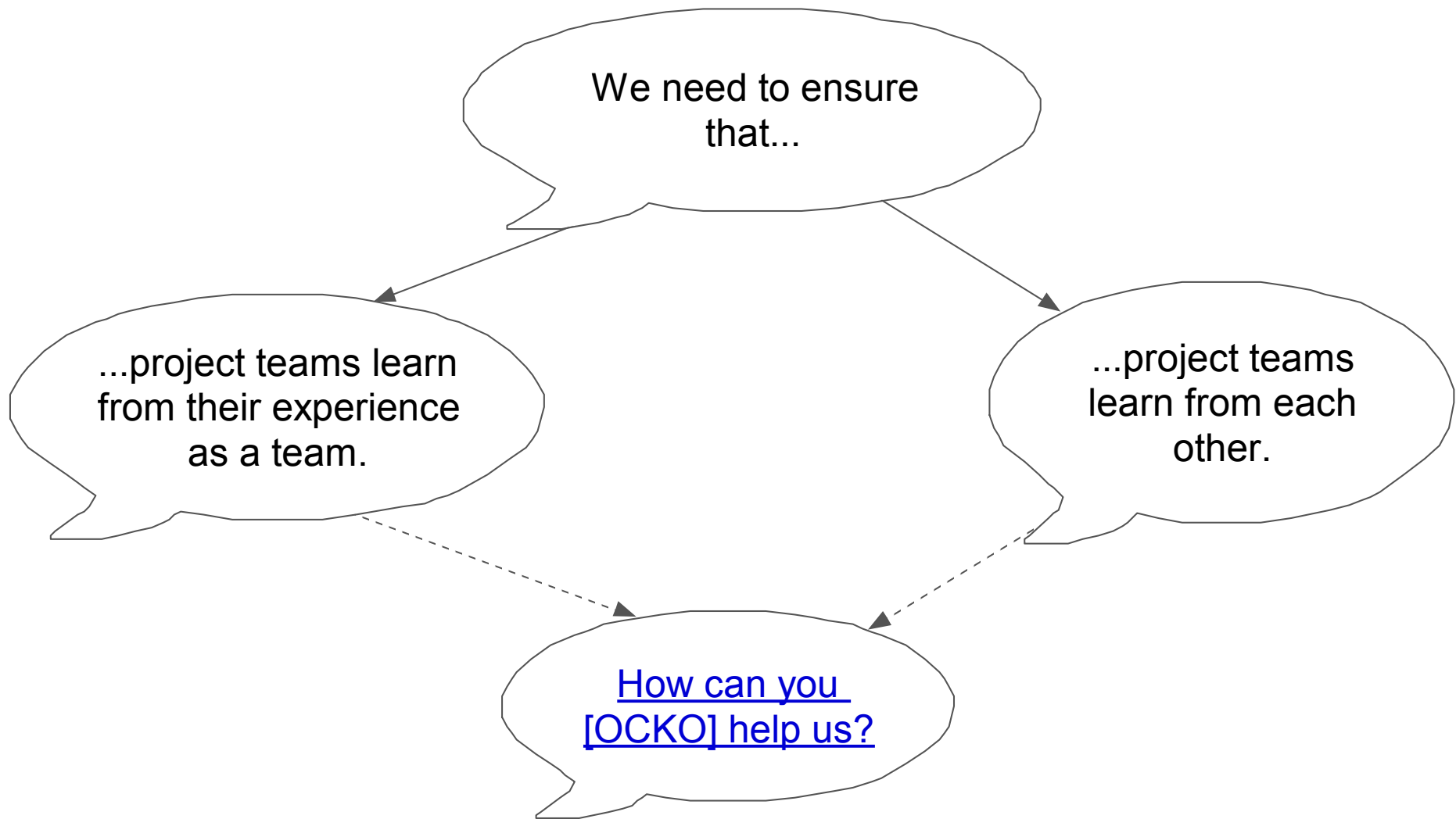
How do we learn at NASA?



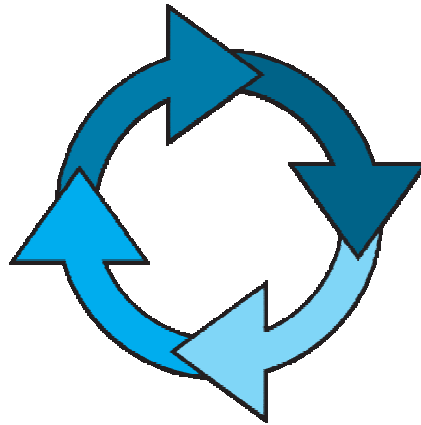
What can the Goddard KM Office do to support organizational learning?



A call for help... a small project office reaching out to the OCKO

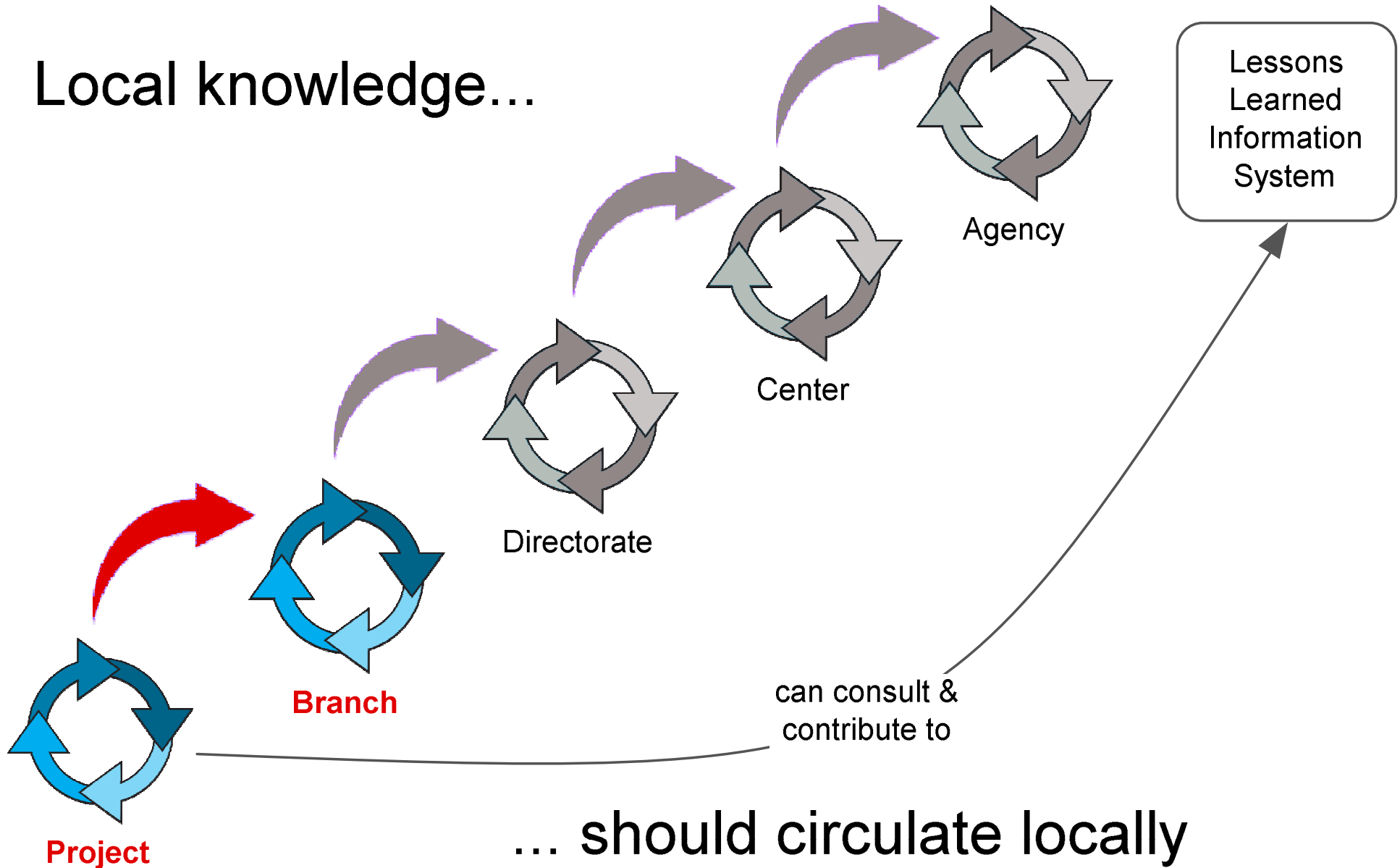


Design a local learning loop...

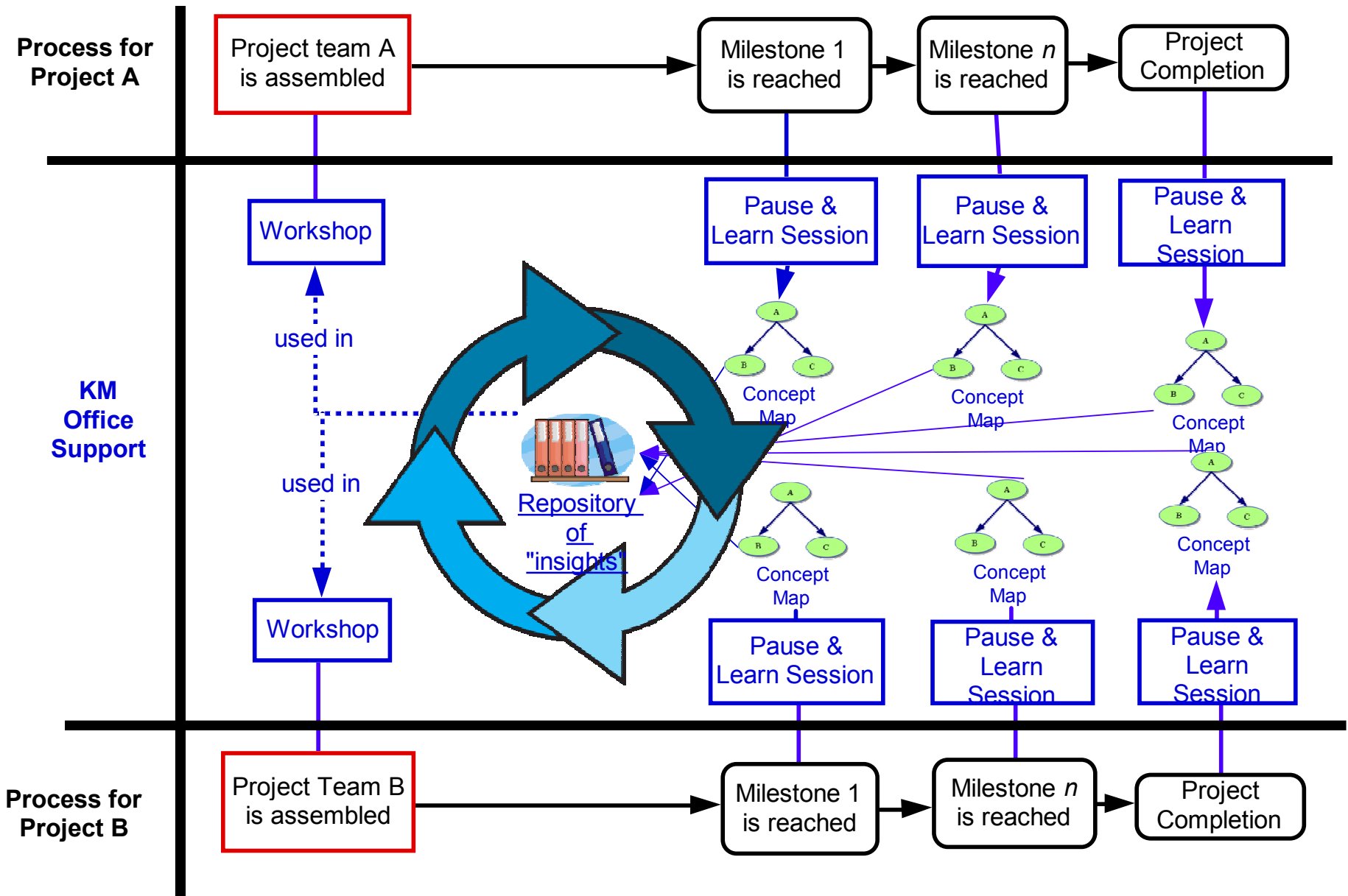


...to ensure the circulation of knowledge within and across projects.

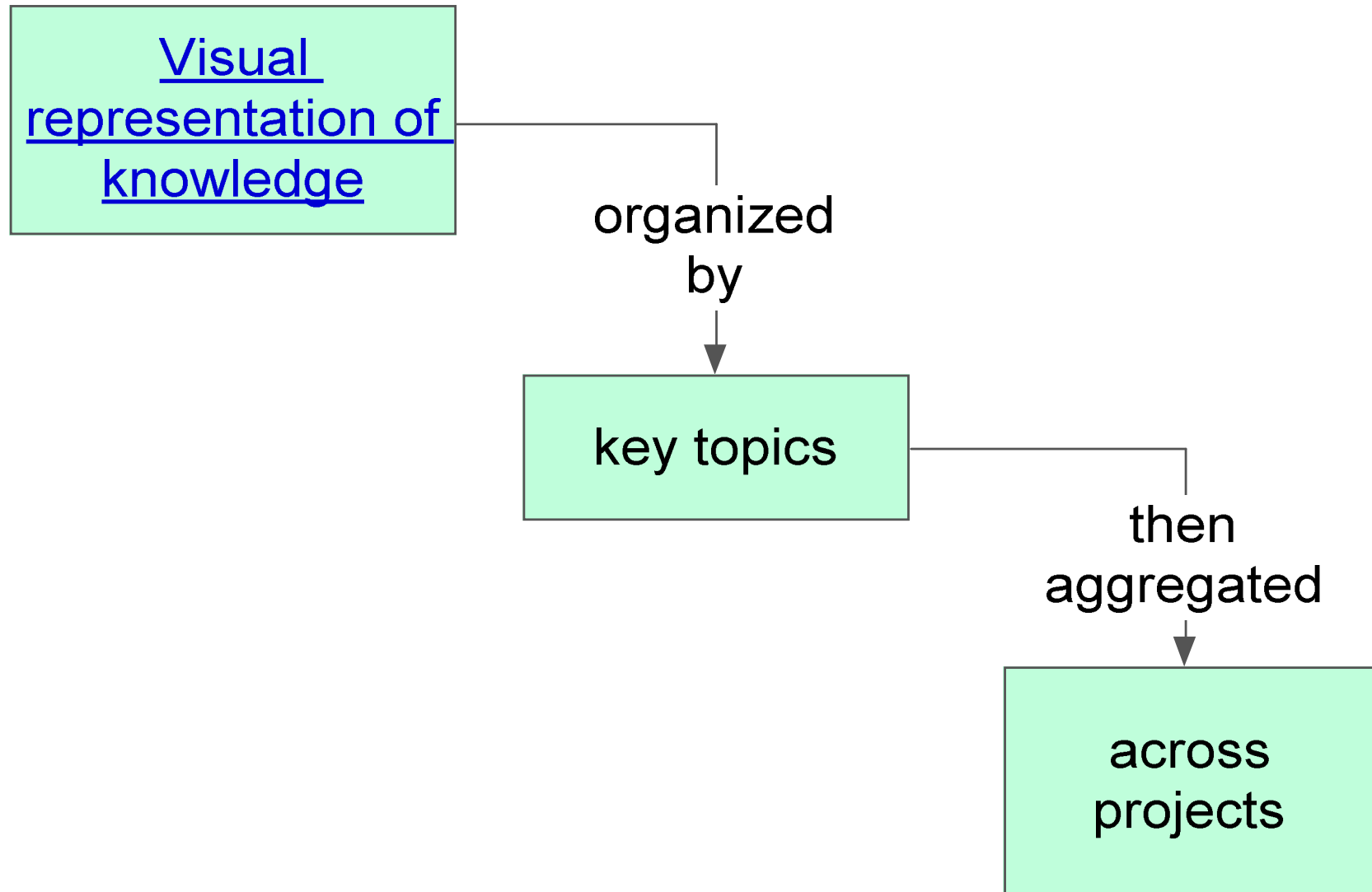
Local knowledge...

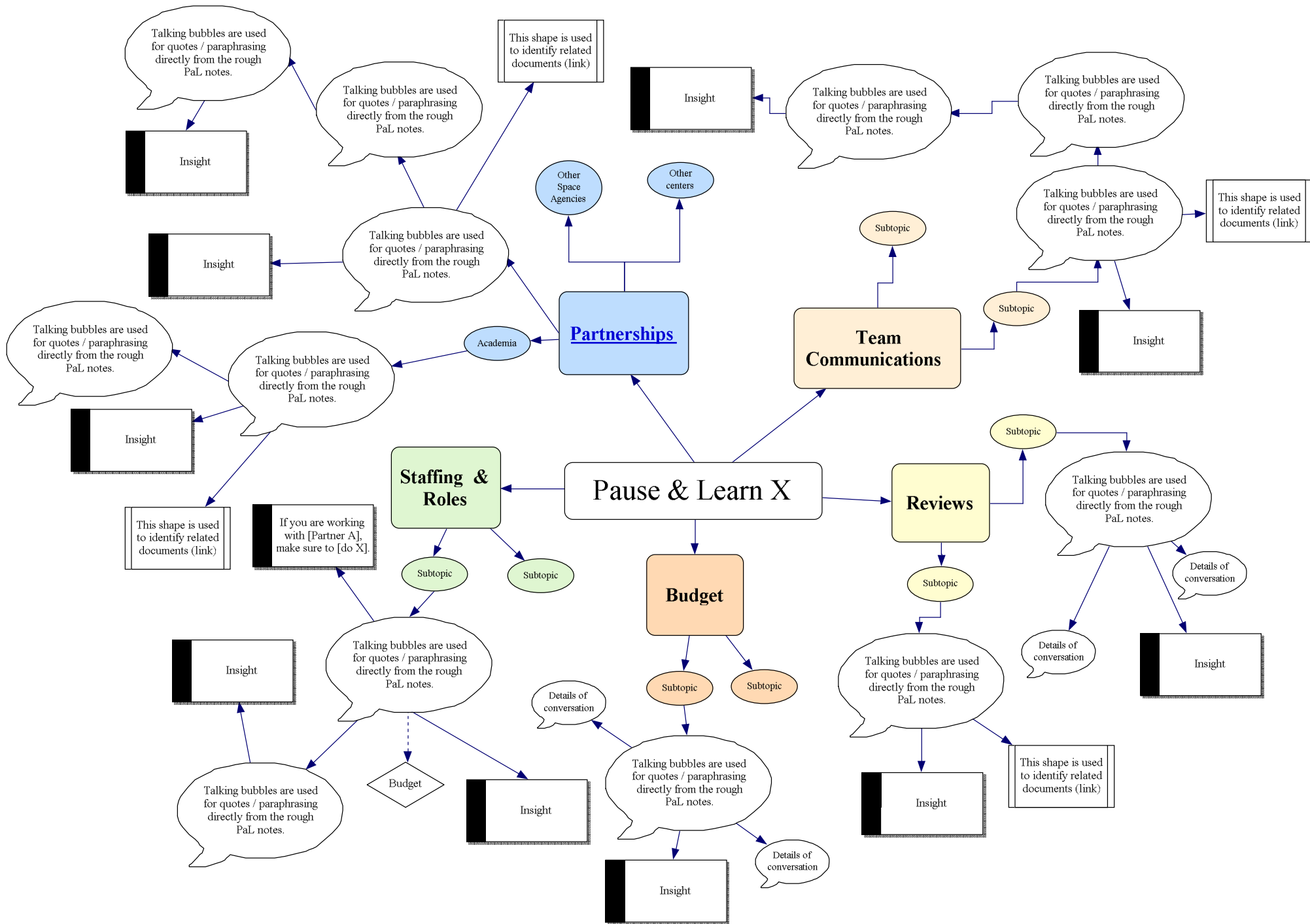


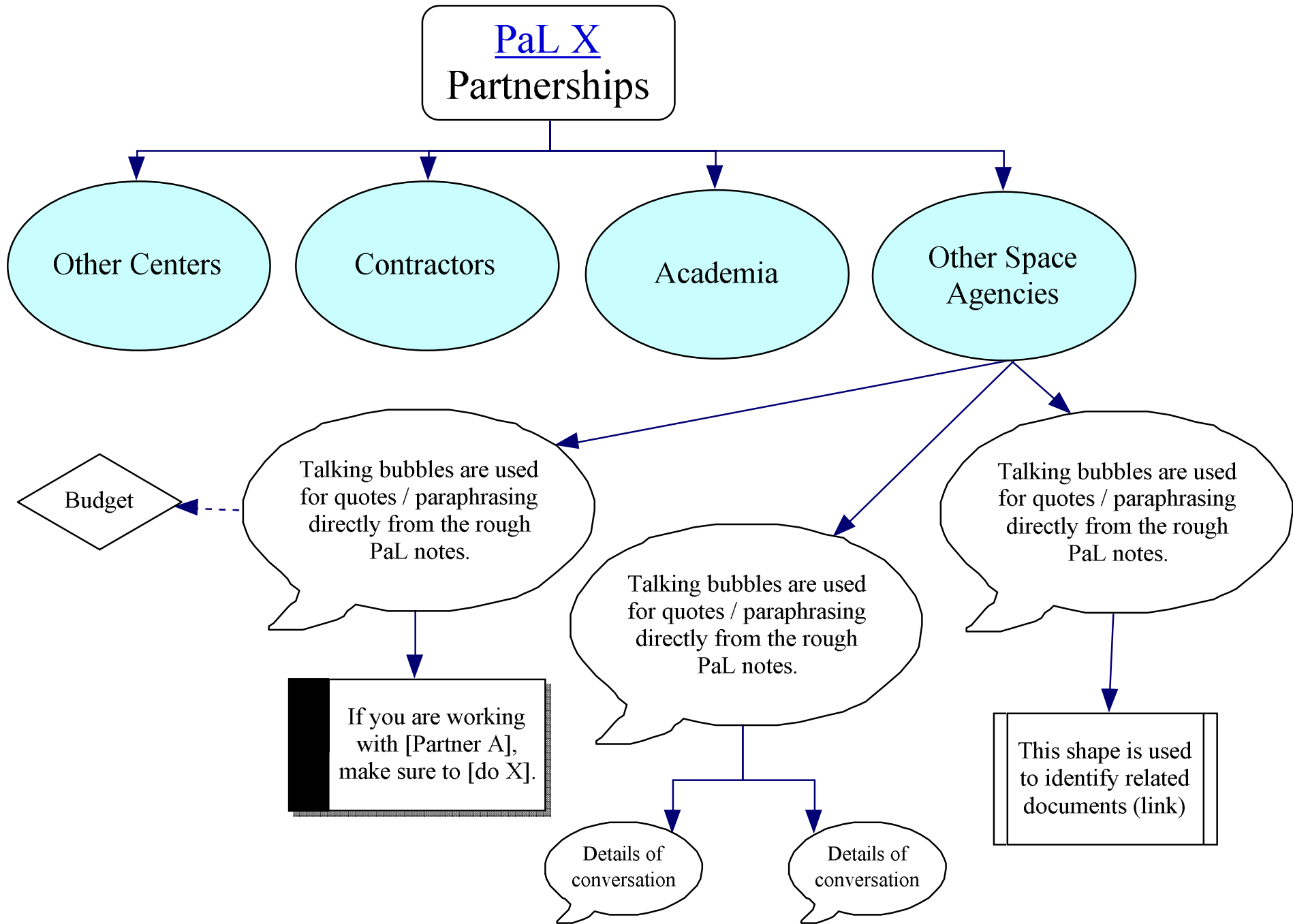
Learning Process & Integration across Projects

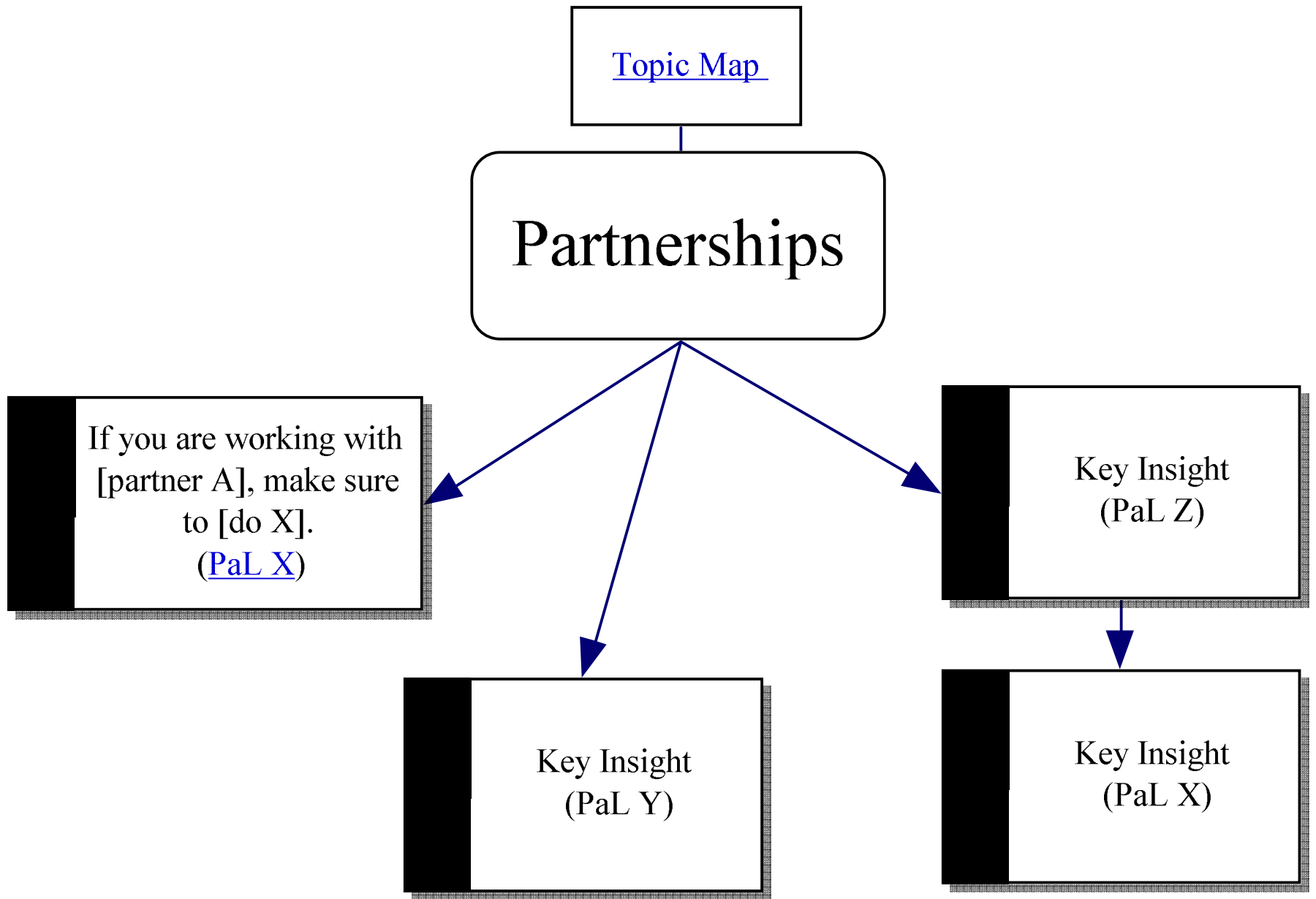


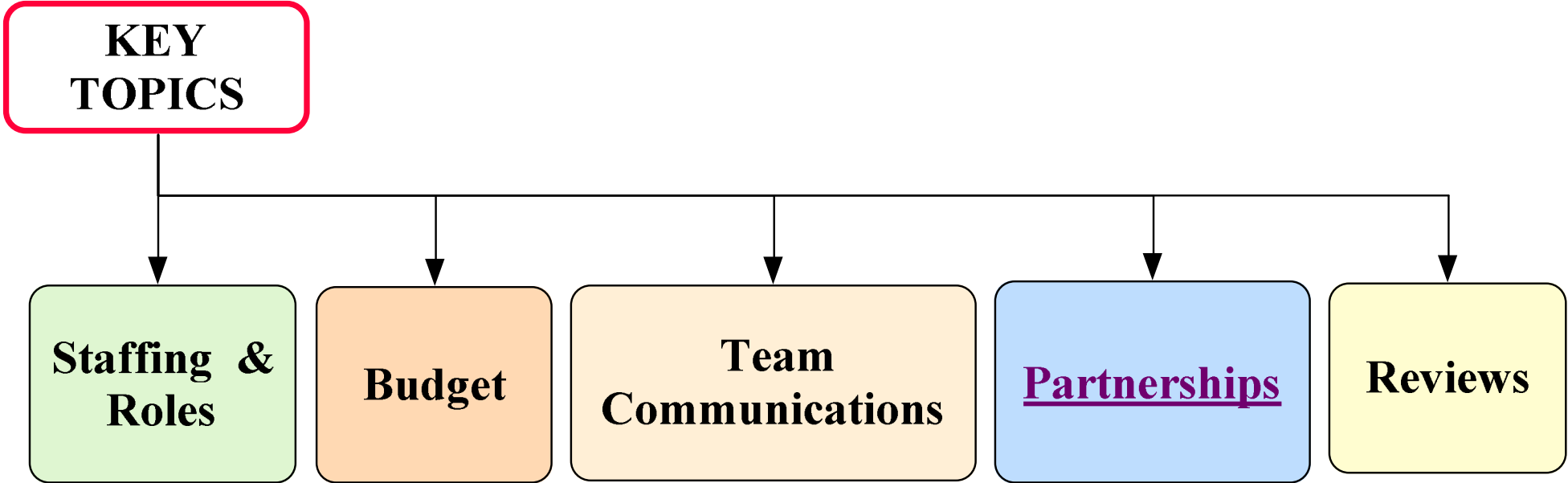
Knowledge Mapping



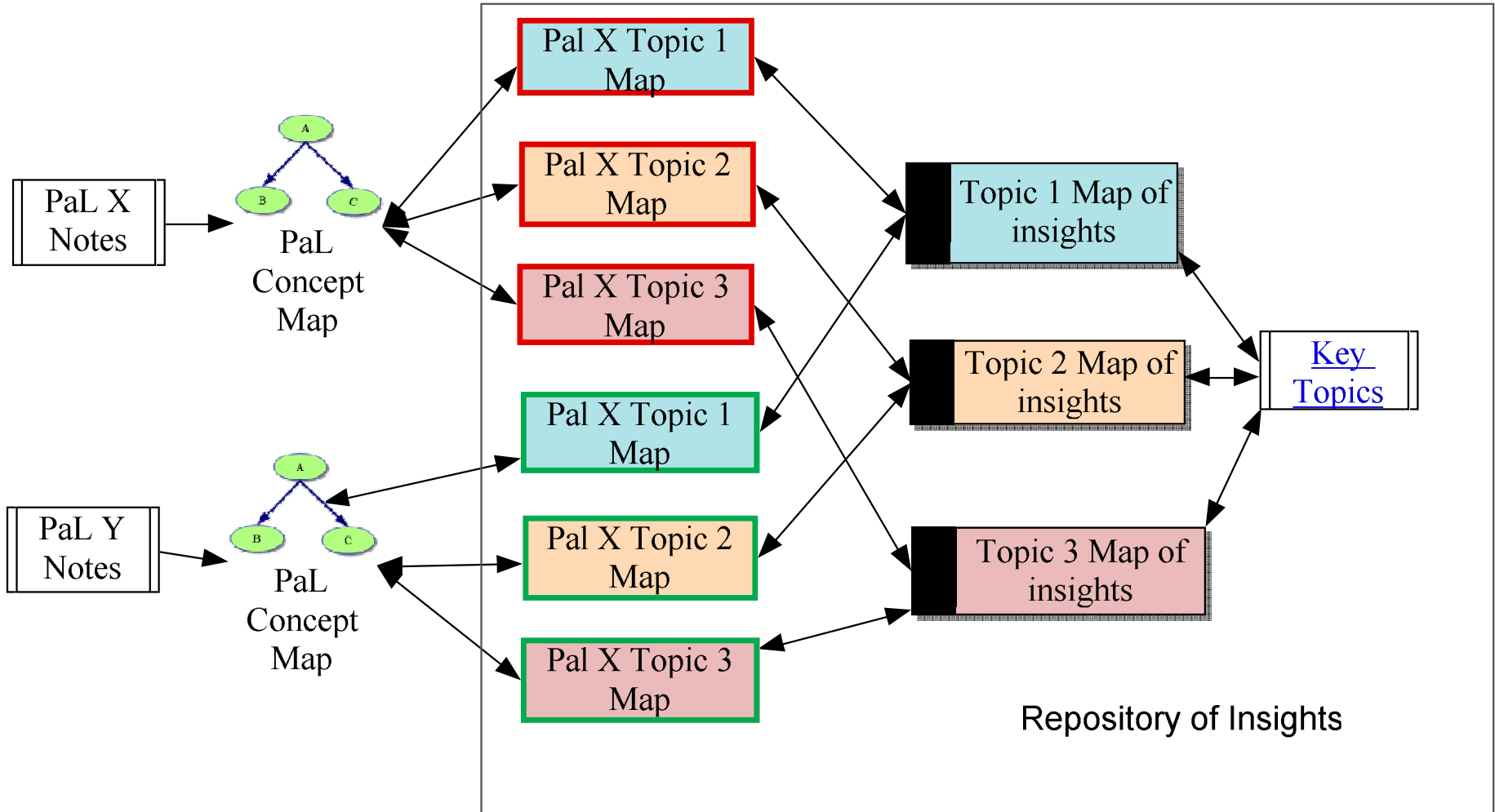








Knowledge Mapping (2)



Key elements to consider w/ local learning loops

- 1 Don't skim on **group reflection**
- 2 Embed KM activities within **existing work processes**
- 3 Determine **roles** and **responsibilities** up front and revisit the issue as the initiative matures
- 4 Maintain **trust** and **traceability**

Return to a previous slide / visual?

How is "local learning" linked to agency-wide lessons learned processes?

What are the next steps with the pilot? (i.e. remaining challenges)

Questions?

Can this pilot be scaled up? How?

Roles and responsibilities

Growth and maintenance

Access rights

What were the factors that made this pilot possible?

When does it become a policy issue?

Contact Information

- Dr. Edward W. Rogers, Chief Knowledge Officer
Office of the Chief Knowledge Officer
NASA/Goddard Space Flight Center
Edward.W.Rogers@nasa.gov
- Dr. Barbara Phillip, KM Project Manager
Office of the Chief Knowledge Officer
NASA/Goddard Space Flight Center
Barbara.fillip-1@nasa.gov

